

STATE OF ILLINOIS
DEPARTMENT OF TRANSPORTATION
DIVISION OF HIGHWAYS

**PROPOSED
HIGHWAY PLANS**

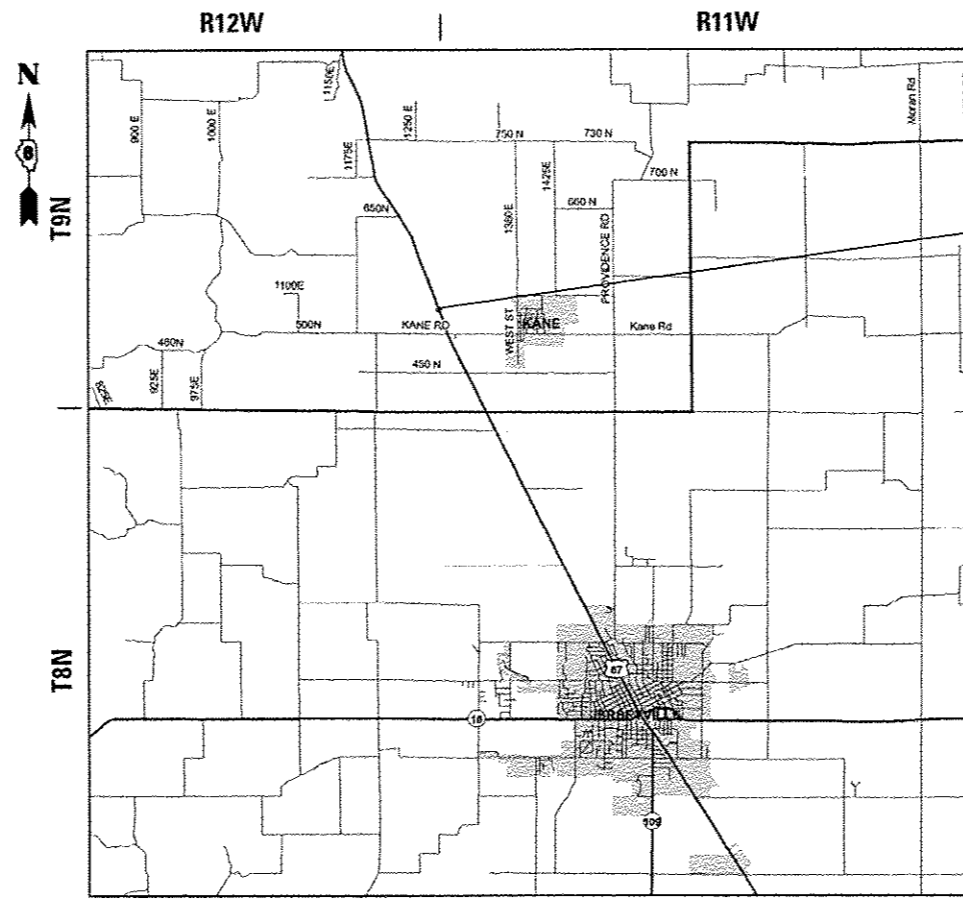
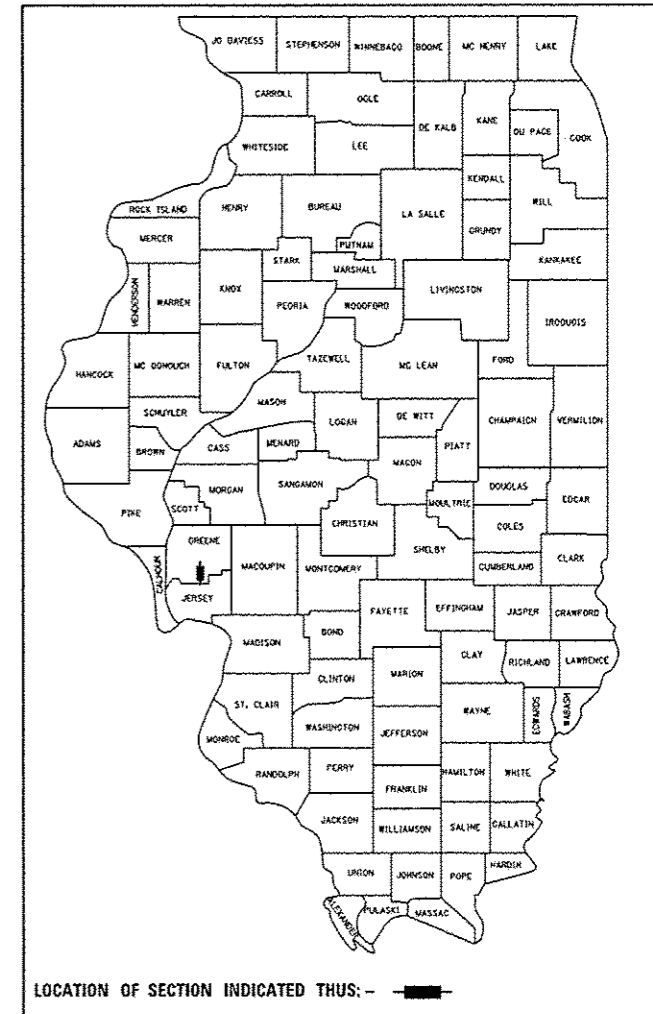
FAP ROUTE 310 (US 67)
SECTION (56,57)-DM
DEMOLITION
GREENE COUNTY

C-98-075-13

FOR INDEX OF SHEETS, SEE SHEET NO. 2

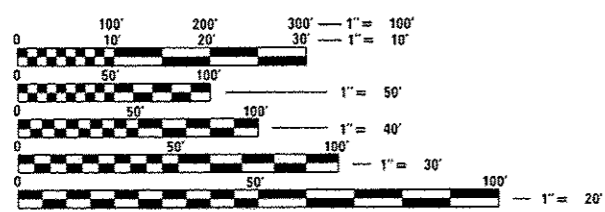
F.A.P. RTE.	SECTION	COUNTY	TOTAL SHEETS	SHEET NO.
310	(56,57)-DM	GREENE	6	1
		ILLINOIS	CONTRACT NO. 76G74	

D-98-076-13



PROJECT LOCATION
LAT: 39.19347
LONG: -90.37480

MAP NOT TO SCALE



FULL SIZE PLANS HAVE BEEN PREPARED USING STANDARD ENGINEERING SCALES. REDUCED SIZED PLANS WILL NOT CONFORM TO STANDARD SCALES. IN MAKING MEASUREMENTS ON REDUCED PLANS, THE ABOVE SCALES MAY BE USED.

J.U.L.I.E.
JOINT UTILITY LOCATION INFORMATION FOR EXCAVATION
1-800-892-0123
OR 811

PROJECT ENGINEER: HERVE GELIN (618) 346-3179
SQUAD LEADER: BILLIE OWEN (618) 346-3329

CONTRACT NO. 76G74

STATE OF ILLINOIS
DEPARTMENT OF TRANSPORTATION

SUBMITTED Aug. 5 20 16
Jeffrey Z. K... REGIONAL ENGINEER
Sept 30 20 16
M. Addison M. Addis PE acting ENGINEER OF DESIGN AND ENVIRONMENT
Sept 30 20 16
... DIRECTOR OF PROGRAM DEVELOPMENT 2

PRINTED BY THE AUTHORITY
OF THE STATE OF ILLINOIS

INDEX OF SHEETS

- 1. COVER SHEET
- 2. INDEX OF SHEETS, HIGHWAY STANDARDS, GENERAL NOTES, AND COMMITMENTS
- 3.-4. SUMMARY OF QUANTITIES
- 5. LOCATION MAP
- 6. PARCEL DETAILS

GENERAL NOTES

1. ILLINOIS STATE LAW REQUIRES A 48-HOUR NOTICE BE GIVEN TO ALL UTILITIES WITHIN THE PROJECT AREA BEFORE DIGGING. FIELD MARKING OF FACILITIES MAY BE OBTAINED BY CONTACTING J.U.L.I.E. OR FOR NON-MEMBERS, THE UTILITY COMPANY DIRECTLY. AGENCIES KNOWN TO HAVE FACILITIES WITHIN THE PROJECT AREA ARE AS FOLLOWS:

- AMEREN ILLINOIS
- FRONTIER NORTH, INC.
- VILLAGE OF KANE

MEMBERS OF J.U.L.I.E. CALL TOLL FREE (800) 892-0123 OR 811 AND ARE INDICATED BY *. NON-J.U.L.I.E. MEMBERS MUST BE NOTIFIED INDIVIDUALLY.

2. A QUANTITY FOR TWO APPLICATIONS OF MULCH, METHOD 2 HAS BEEN INCLUDED IN THIS CONTRACT. ONE APPLICATION OF MULCH IS TO BE PLACED OVER THE TEMPORARY SEEDING. THE SECOND APPLICATION WILL BE USED AFTER THE FINAL SEEDING OPERATIONS ARE COMPLETE.

STANDARDS

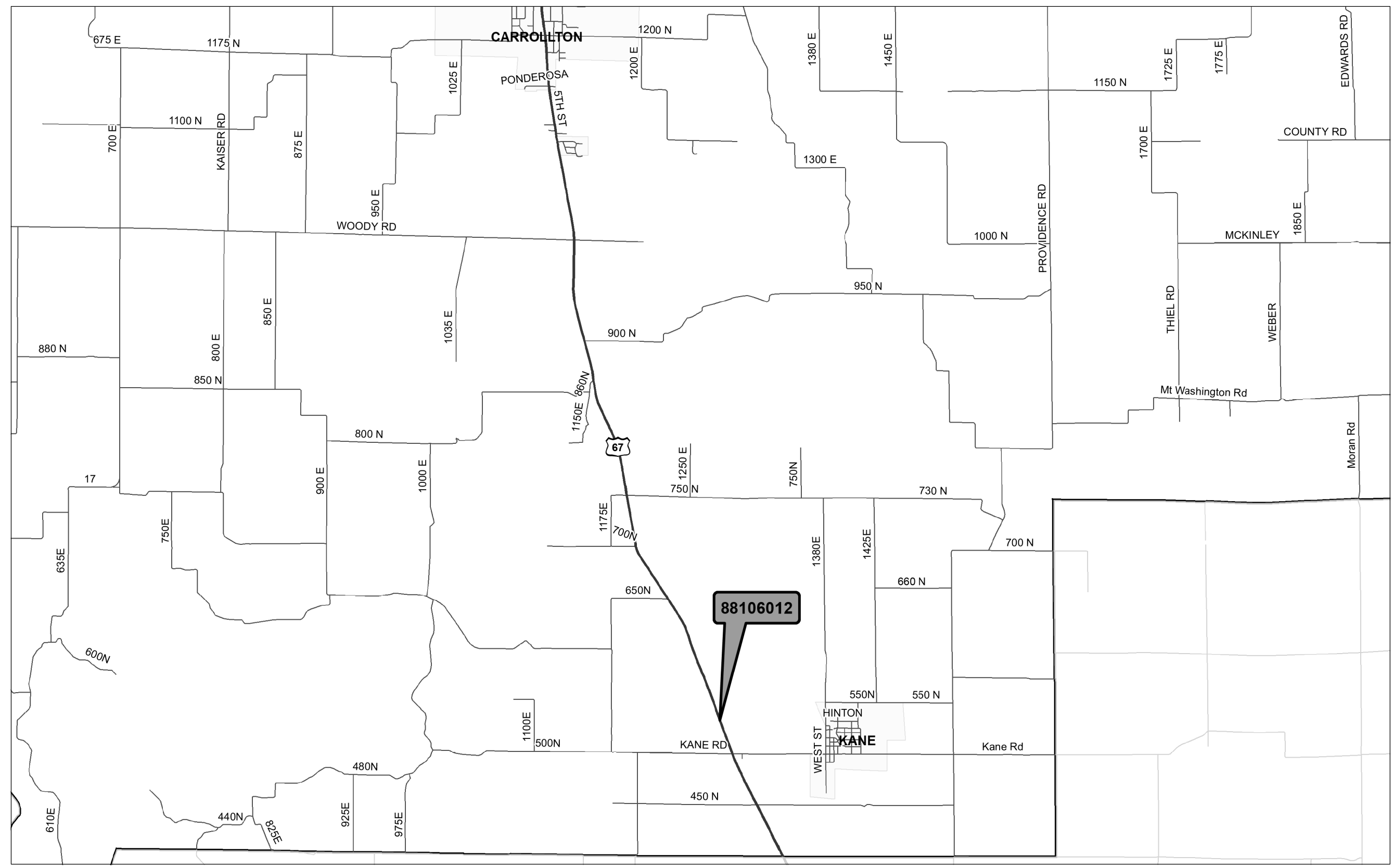
- 280001-07
- 701001-02
- 701006-05
- 701901-05

COMMITMENTS

TREE REMOVAL WILL NOT OCCUR FROM APRIL 1 THROUGH SEPTEMBER 30 DUE TO POTENTIAL INDIANA BAT HABITAT.

FILE NAME =	USER NAME = ch11andeko	DESIGNED -	REVISED -	STATE OF ILLINOIS DEPARTMENT OF TRANSPORTATION	INDEX OF SHEETS, HIGHWAY STANDARDS, GENERAL NOTES AND COMMITMENTS	F.A.P. RTE.	SECTION	COUNTY	TOTAL SHEETS	SHEET NO.
p:\IL884EB\INTEG\illinois.gov\PI001\Doc	Documents\1001 OFF\1001\District 8\Projects\007	CHECKED -	REVISED -			310	(56,57)-DM	GREENE	6	2
	PLOT SCALE = 100,0000' / 1" =	CHECKED -	REVISED -			CONTRACT NO. 76674				
	PLOT DATE = 8/4/2016	DATE -	REVISED -			SCALE:	SHEET NO. OF SHEETS STA. TO STA.	FED. ROAD DIST. NO.	ILLINOIS FED. AID PROJECT	

CODE NO.	ITEM	UNIT	TOTAL QUANTITY	CONSTR. CODE
				100% STATE ROADWAY 0044 RURAL
25000110	SEEDING, CLASS 1A	ACRE	0.75	0.75
25000400	NITROGEN FERTILIZER NUTRIENT	POUND	68	68
25000500	PHOSPHORUS FERTILIZER NUTRIENT	POUND	68	68
25000600	POTASSIUM FERTILIZER NUTRIENT	POUND	68	68
25000700	AGRICULTURAL GROUND LIMESTONE	TON	2	2
25100115	MULCH, METHOD 2	ACRE	1.5	1.5
28000250	TEMPORARY EROSION CONTROL SEEDING	POUND	75	75
28000400	PERIMETER EROSION BARRIER	FOOT	500	500
67100100	MOBILIZATION	LSUM	1	1
67201000	SEALING ABANDONED WATER WELLS	EACH	1	1
Z0007601	BUILDING REMOVAL NO. 1	LSUM	1	1
Z0007602	BUILDING REMOVAL NO. 2	LSUM	1	1
Z0007603	BUILDING REMOVAL NO. 3	LSUM	1	1
Z0007604	BUILDING REMOVAL NO. 4	LSUM	1	1



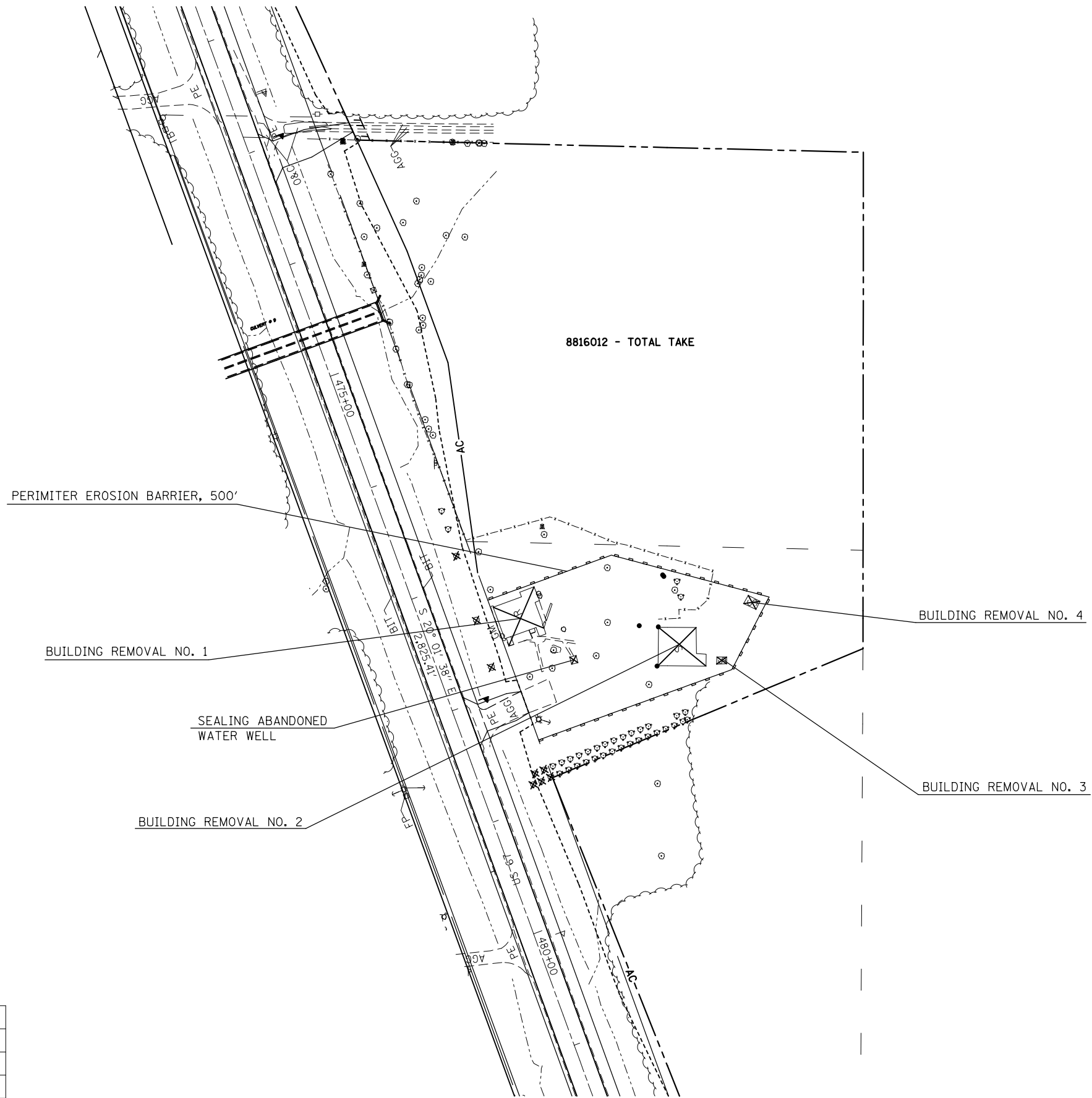
FILE NAME =	USER NAME = chollandeske	DESIGNED -	REVISED -
p:\11084EBIDINTEG\illinois.gov\PIDOT\Documents\DOT Offices\District 8\Projects\D87674\DRAWING\DATA\EA0\sheets\D87674-sht-10.mxd		DRAWN -	REVISED -
	PLOT SCALE = 100.0000' / 1" =	CHECKED -	REVISED -
	PLOT DATE = 8/3/2016	DATE -	REVISED -

**STATE OF ILLINOIS
DEPARTMENT OF TRANSPORTATION**

**LOCATION MAP
PARCEL 8816012**

SCALE: NONE SHEET NO. OF SHEETS STA. TO STA.

F.A.P. RTE.	SECTION	COUNTY	TOTAL SHEETS	SHEET NO.
310	(56,57)-DM	GREENE	6	5
CONTRACT NO. 76G74				
FED. ROAD DIST. NO. ILLINOIS FED. AID PROJECT				



8816012 - TOTAL TAKE

PERIMETER EROSION BARRIER, 500'

BUILDING REMOVAL NO. 1

SEALING ABANDONED WATER WELL

BUILDING REMOVAL NO. 2

BUILDING REMOVAL NO. 4

BUILDING REMOVAL NO. 3

BUILDING NO.	DESCRIPTION
1	ONE STORY HOUSE WITH PARTIAL BASEMENT
2	BARN
3	SHED
4	SHED

NOTE: EXISTING SEPTIC SYSTEM SHALL BE REMOVED AND FILLED.

FILE NAME =	USER NAME = chollandeske	DESIGNED -	REVISED -
pw:\11\084EBIDINTEG.illinois.gov\PIWIDOT\Documents\IDOT Offices\District 8\Projects\087674\DRAWING\087674-01\087674-01-01.dwg		CHECKED -	REVISED -
	PLOT SCALE = 100.0000' / 1" =	DATE -	REVISED -
	PLOT DATE = 8/3/2016		

STATE OF ILLINOIS
DEPARTMENT OF TRANSPORTATION

PLAN VIEW
PARCEL 8816012

SCALE: SHEET NO. OF SHEETS STA. TO STA.

F.A.P. RTE.	SECTION	COUNTY	TOTAL SHEETS	SHEET NO.
310	(56,57)-DM	GREENE	6	6
FED. ROAD DIST. NO. ILLINOIS FED. AID PROJECT			CONTRACT NO. 76G74	