

STATE OF ILLINOIS
DEPARTMENT OF TRANSPORTATION
DIVISION OF HIGHWAYS

**PROPOSED
HIGHWAY PLANS**

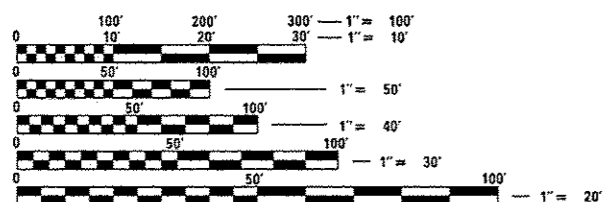
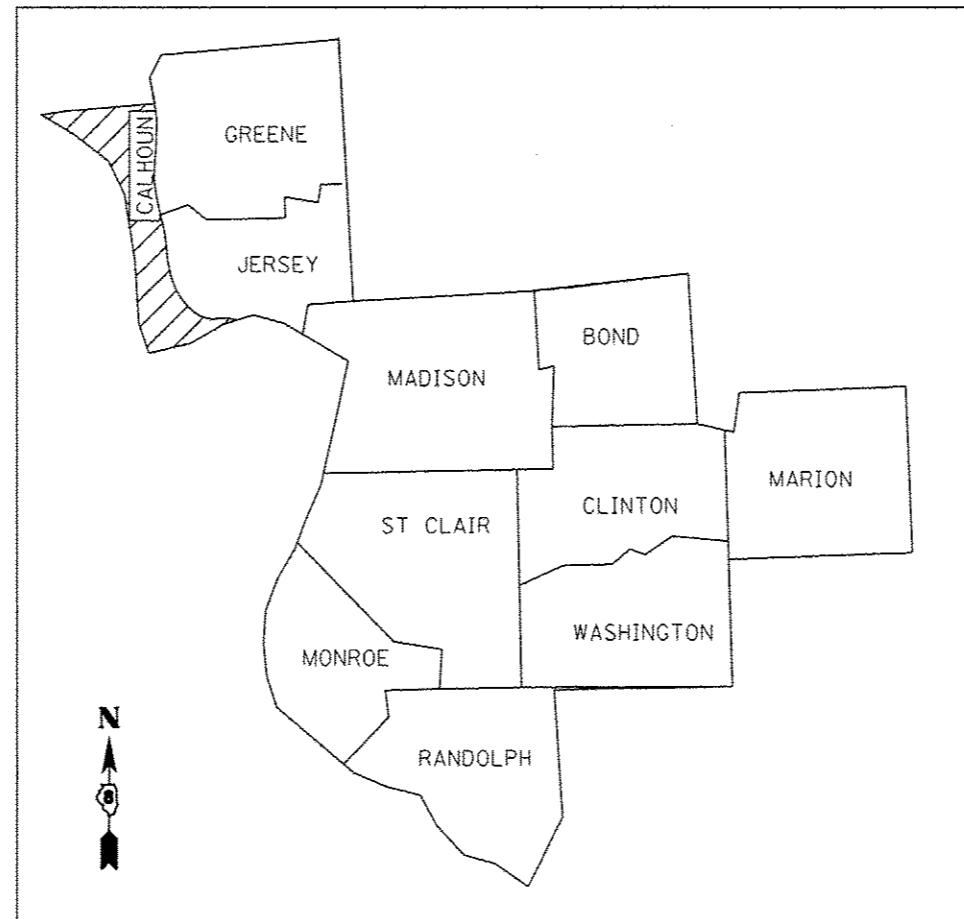
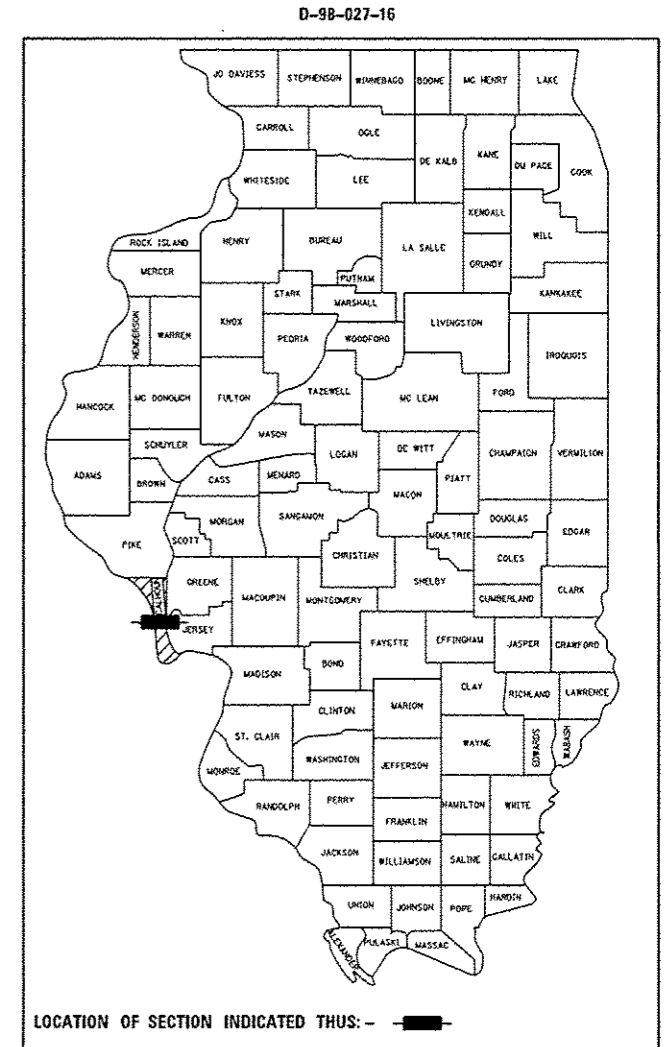
FAP 304 (IL 016/L 100)
SECTION 266BR-1-I-1
REPAIR & MAINTENANCE OF
ELECTRICAL EQUIPMENT ON
THE JOE PAGE BRIDGE
CALHOUN COUNTY

C-98-021-16

F.A.P. RTE.	SECTION	COUNTY	TOTAL SHEETS	SHEET NO.
304	266BR-1-I-1	CALHOUN	3	1
		ILLINOIS	CONTRACT NO. 76J47	

INDEX OF SHEETS

- 1 COVER SHEET
- 2 GENERAL NOTES AND TYPICAL WORK ORDER FORMS
- 3 SUMMARY OF QUANTITIES



FULL SIZE PLANS HAVE BEEN PREPARED USING STANDARD ENGINEERING SCALES. REDUCED SIZED PLANS WILL NOT CONFORM TO STANDARD SCALES. IN MAKING MEASUREMENTS ON REDUCED PLANS, THE ABOVE SCALES MAY BE USED.

J.U.L.I.E.
JOINT UTILITY LOCATION INFORMATION FOR EXCAVATION
1-800-892-0123
OR 811

PROJECT ENGINEER: HERVE GELIN (618) 346-3179
PROJECT MANAGER: TIM KRUMM (618) 346-3258
SQUAD LEADER: MICHAEL PRESTON (618) 346-3143
CONTRACT NO. 76J47

NOTE: WORK WILL BE LOCATED WITHIN HIGHLIGHTED AREA NOTED ABOVE WITHIN DISTRICT 8/REGION 5.

STATE OF ILLINOIS
DEPARTMENT OF TRANSPORTATION

SUBMITTED Aug 2 2016
Jaffrey Z. Kan...
REGIONAL ENGINEER

Sept 30 2016
Muhammad M. Addis
ENGINEER OF DESIGN AND ENVIRONMENT

Sept 30 2016
[Signature]
DIRECTOR OF PROGRAM DEVELOPMENT

**PRINTED BY THE AUTHORITY
OF THE STATE OF ILLINOIS**

