

SUMMARY OF QUANTITIES

CODE #	ITEM	UNIT	TOTAL QUANTITY
Δ 25000700	AGRICULTURAL GROUND LIMESTONE	TONS	29.4
Δ 25000750	MOWING	ACRE	73.5
Δ 25100115	MULCH, METHOD 2	ACRES	14.75
28000250	TEMPORARY EROSION CONTROL SEEDING	POUND	1,468
28000305	TEMPORARY DITCH CHECKS	FOOT	720
28000400	PERIMETER EROSION BARRIER	FOOT	6,911
28000500	INLET AND PIPE PROTECTION	EACH	13
28000510	INLET FILTERS	EACH	5
28100103	STONE RIPRAP CLASS A2	SQ YD	192
28100105	STONE RIPRAP CLASS A3	SQ YD	24
Δ 28100109	STONE RIPRAP CLASS A5	SQ YD	192
28100111	STONE RIPRAP CLASS A6	SQ YD	192
28200200	FILTER FABRIC	SQ YD	216
30200650	PROCESSING MODIFIED SOIL 12"	SQ YD	20,821
30201500	LIME	TON	520.5

*** "SEE SPECIAL PROVISIONS, HIGHWAY STANDARDS, GENERAL NOTES, AND/OR DETAILS IN PLANS"**

Δ SPECIALTY ITEMS



© Copyright Hanson Professional Services Inc. 2016

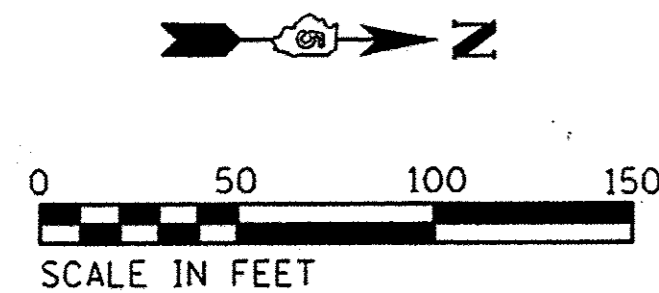
FINAL
 DESIGNED - MH 2/25/2015
 DRAWN - DJP 2/25/2015
 REVIEWED - MH 3/30/2015

FILE NAME = It:\14\jobs\14L0106\CAD\Road\Sheet\C-500.7.dgn	USER NAME = pop00275	DESIGNED - MH	REVISED - Δ 10/26/2016
PLOT SCALE = 0.0833 ' / in.	CHECKED - MH	DRAWN - DJP	REVISED -
PLOT DATE = 4/21/2016	DATE - 12/17/2015		

**STATE OF ILLINOIS
DEPARTMENT OF TRANSPORTATION**

SUMMARY OF QUANTITIES NORTH LINCOLN AVENUE	
SCALE:	SHEET 2 OF 7 SHEETS STA. TO STA.

F.A.U. RTE. 7177	SECTION 11-00334-01-PV	COUNTY CHAMPAIGN	TOTAL SHEETS 71	SHEET NO. 4
14L0106			CONTRACT NO. 91503	
ILLINOIS FED. AID PROJECT				



1275+00

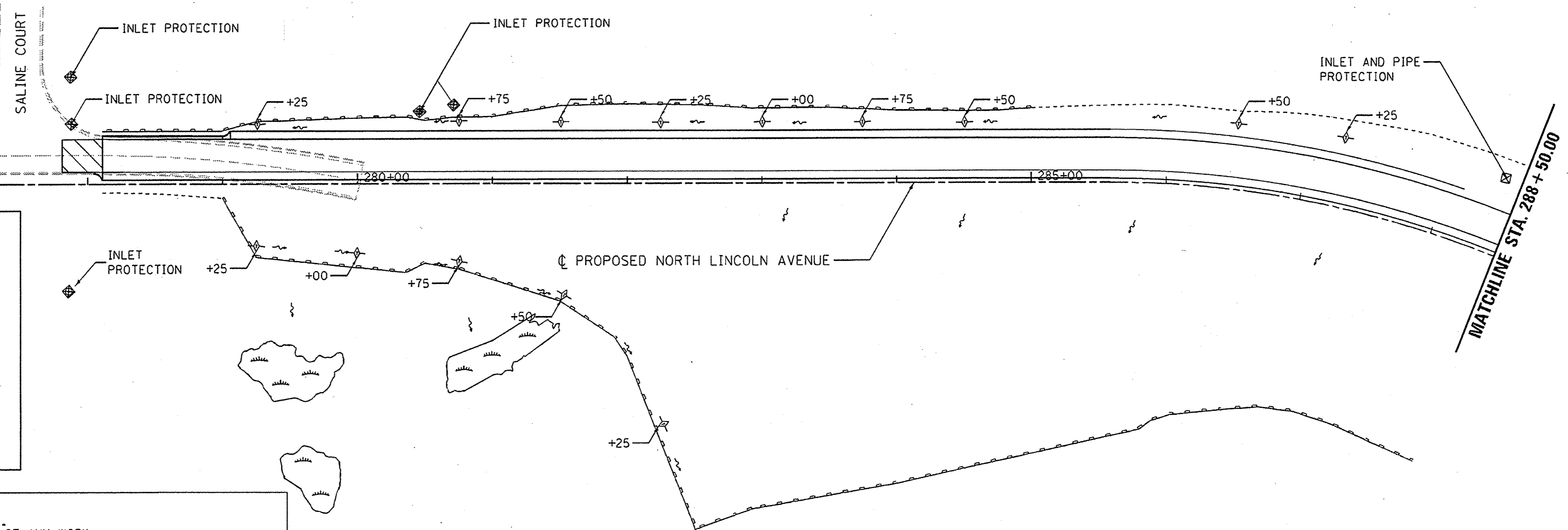
1280+00

1285+00

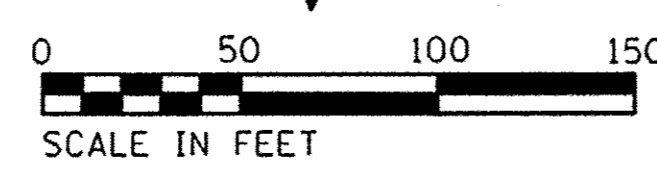
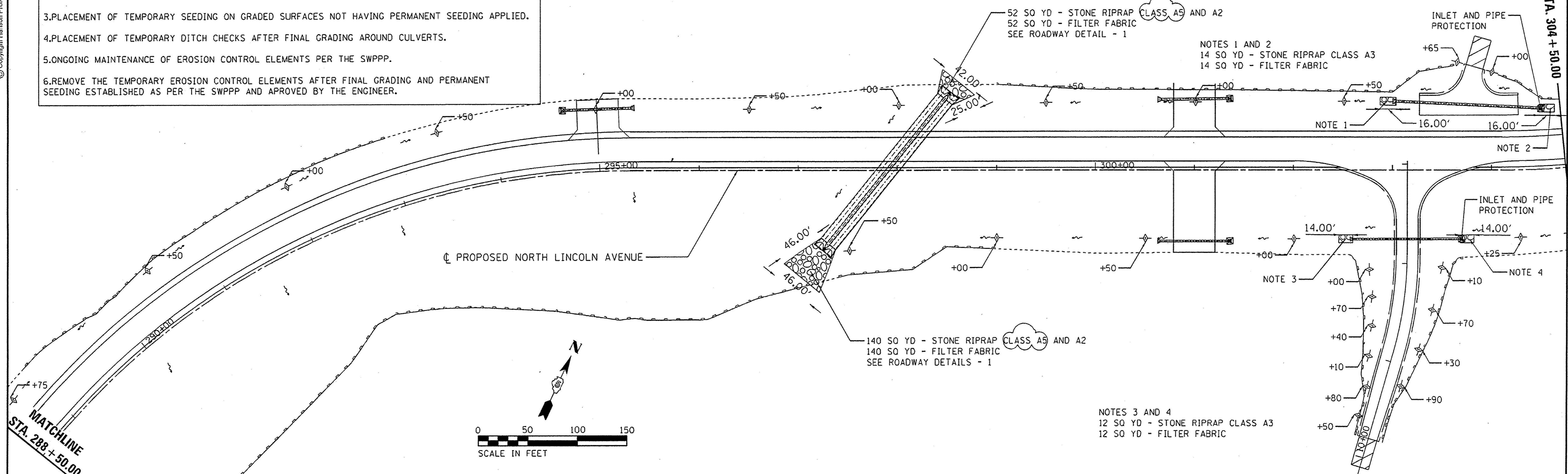
EROSION CONTROL LEGEND

- RIPRAP
- TEMPORARY DITCH CHECK
- PERIMETER EROSION BARRIER
- INLET AND PIPE PROTECTION
- DRAINAGE PATTERN DIRECTION

- INTENDED SEQUENCE**
1. PLACEMENT OF EROSION BARRIER PRIOR TO COMMENCEMENT OF ANY WORK.
 2. PLACEMENT OF INLET AND PIPE PROTECTION ON EXISTING CULVERTS PRIOR TO COMMENCEMENT OF WORK. PLACEMENT OF INLET AND PIPE PROTECTION AFTER CONSTRUCTION OF PROPOSED STRUCTURES.
 3. PLACEMENT OF TEMPORARY SEEDING ON GRADED SURFACES NOT HAVING PERMANENT SEEDING APPLIED.
 4. PLACEMENT OF TEMPORARY DITCH CHECKS AFTER FINAL GRADING AROUND CULVERTS.
 5. ONGOING MAINTENANCE OF EROSION CONTROL ELEMENTS PER THE SWPPP.
 6. REMOVE THE TEMPORARY EROSION CONTROL ELEMENTS AFTER FINAL GRADING AND PERMANENT SEEDING ESTABLISHED AS PER THE SWPPP AND APPROVED BY THE ENGINEER.



HANSON
© Copyright Hanson Professional Services Inc. 2016



DESIGNED	MH	2/25/2015
DRAWN	DJP	2/25/2015
REVIEWED	MH	3/30/2015

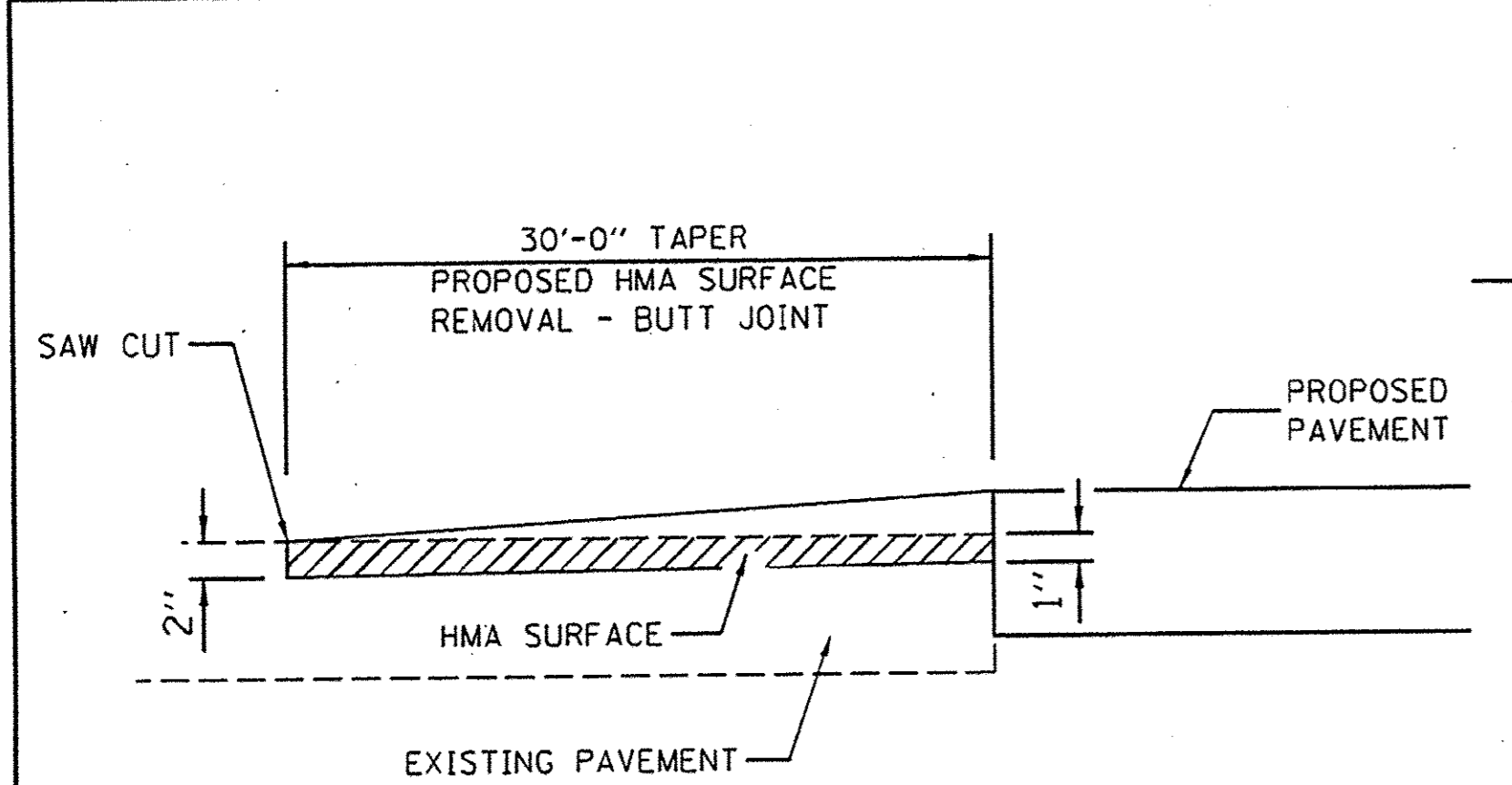
FILE NAME =	USER NAME = heyen00951	DESIGNED - MH	REVISED - 10/26/2016
1:\14\jobs\14L0106\CAD\Road\Sheet\C-ERO.201.dgn		DRAWN - DJP	REVISED -
PLOT SCALE = 99.9968' / 1" =		CHECKED - MH	REVISED -
PLOT DATE = 10/24/2016		DATE - 12/17/2015	REVISED -

**STATE OF ILLINOIS
DEPARTMENT OF TRANSPORTATION**

**EROSION CONTROL PLAN - 1
NORTH LINCOLN AVENUE**

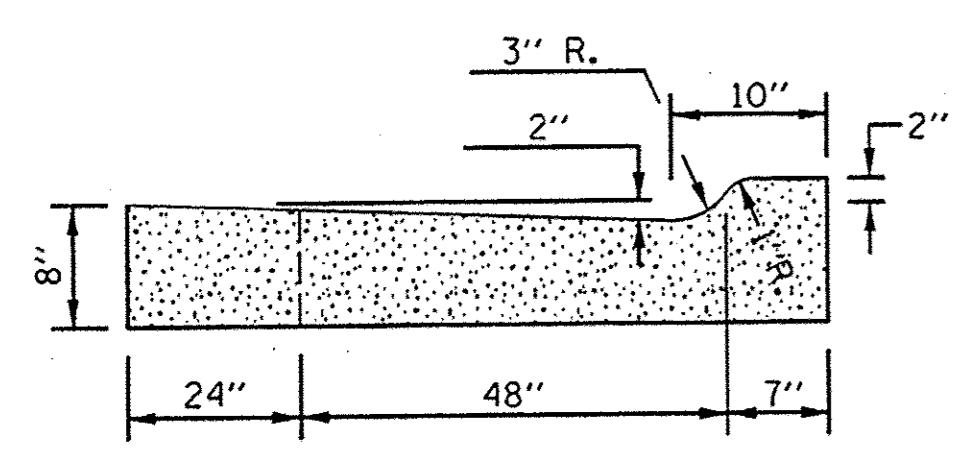
SCALE: SHEET 1 OF 3 SHEETS STA. TO STA.

F.A.U. RTE.	SECTION	COUNTY	TOTAL SHEETS	SHEET NO.
7177	11-00334-01-PV	CHAMPAIGN	71	27
14L0106			CONTRACT NO. 91503	
ILLINOIS FED. AID PROJECT				

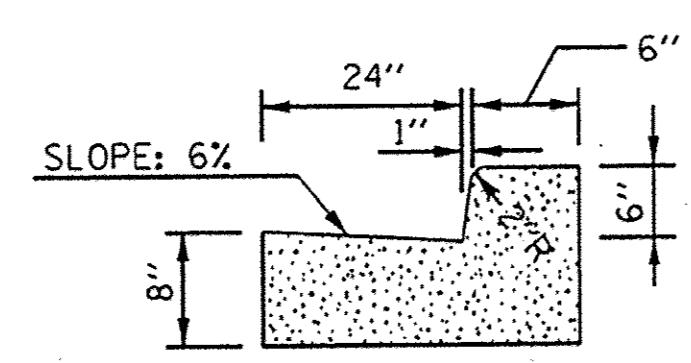


BUTT JOINT AND HMA TAPER
NOT TO SCALE

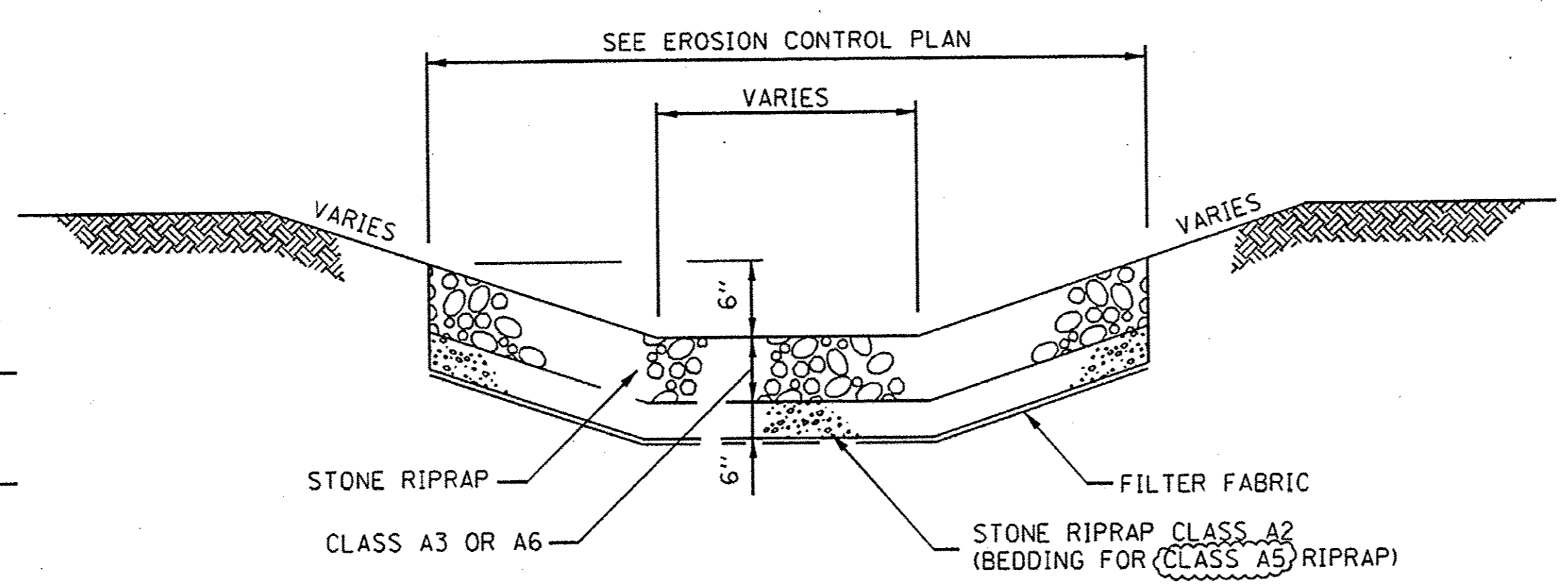
NORTH LINCOLN AVENUE STA. 277+80.00 TO STA. 278+11.00
 NORTH LINCOLN AVENUE STA. 303+82.68 103.79 LT TO 132.45 LT
 CONNECTION A STA. 9+90.00 TO STA. 10+20.00
 CONNECTION B STA. 21+06.28 TO STA. 21+36.28



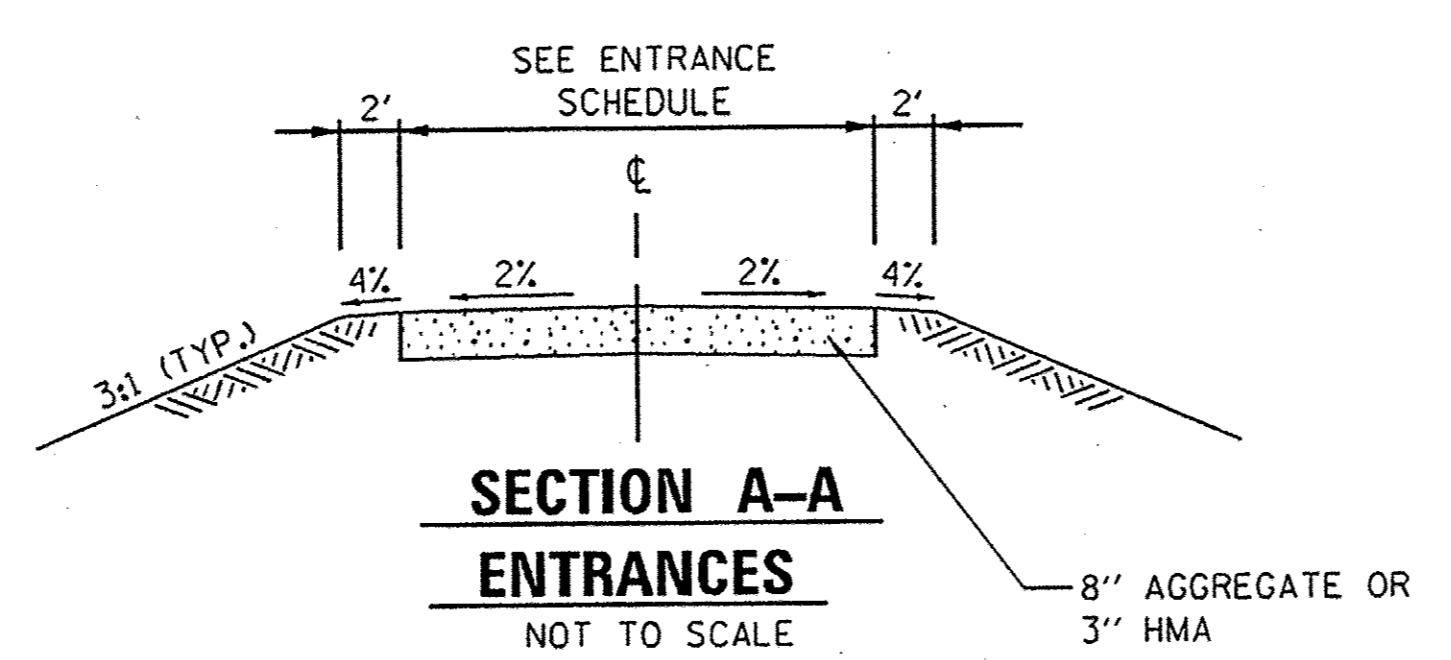
SECTION C-C
NOT TO SCALE



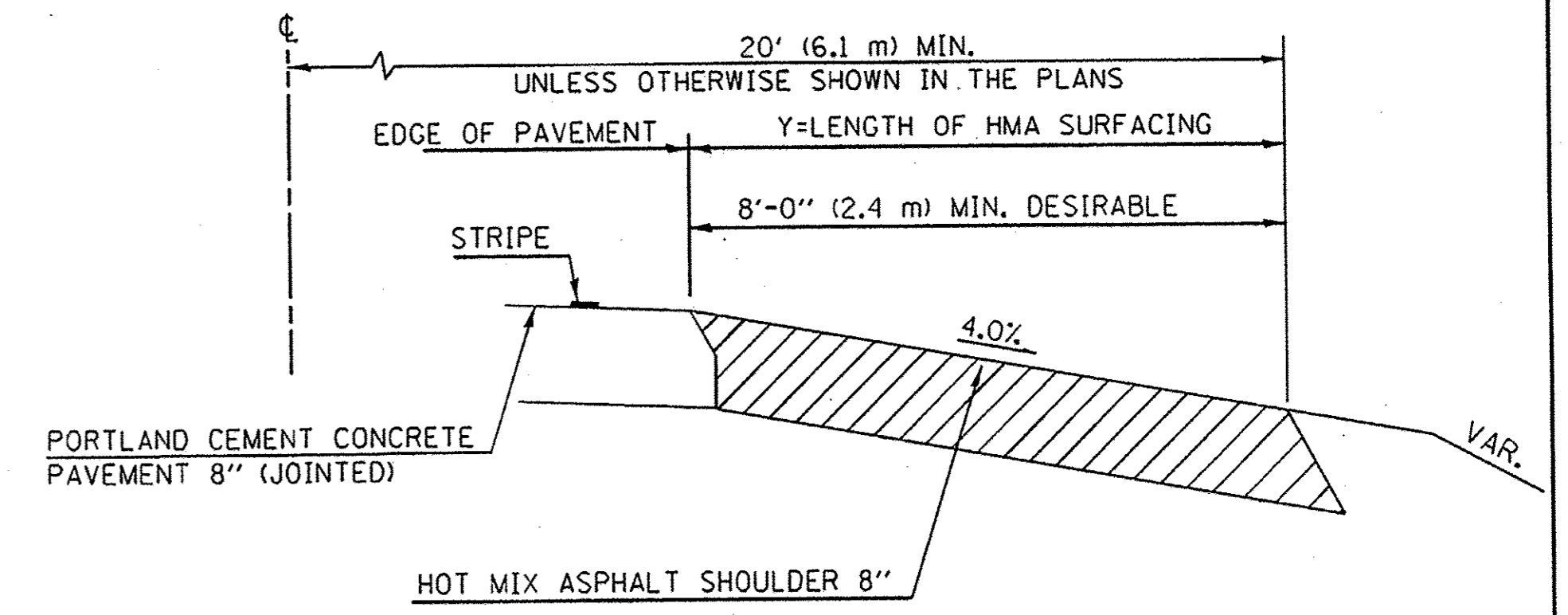
SECTION B-B
NOT TO SCALE



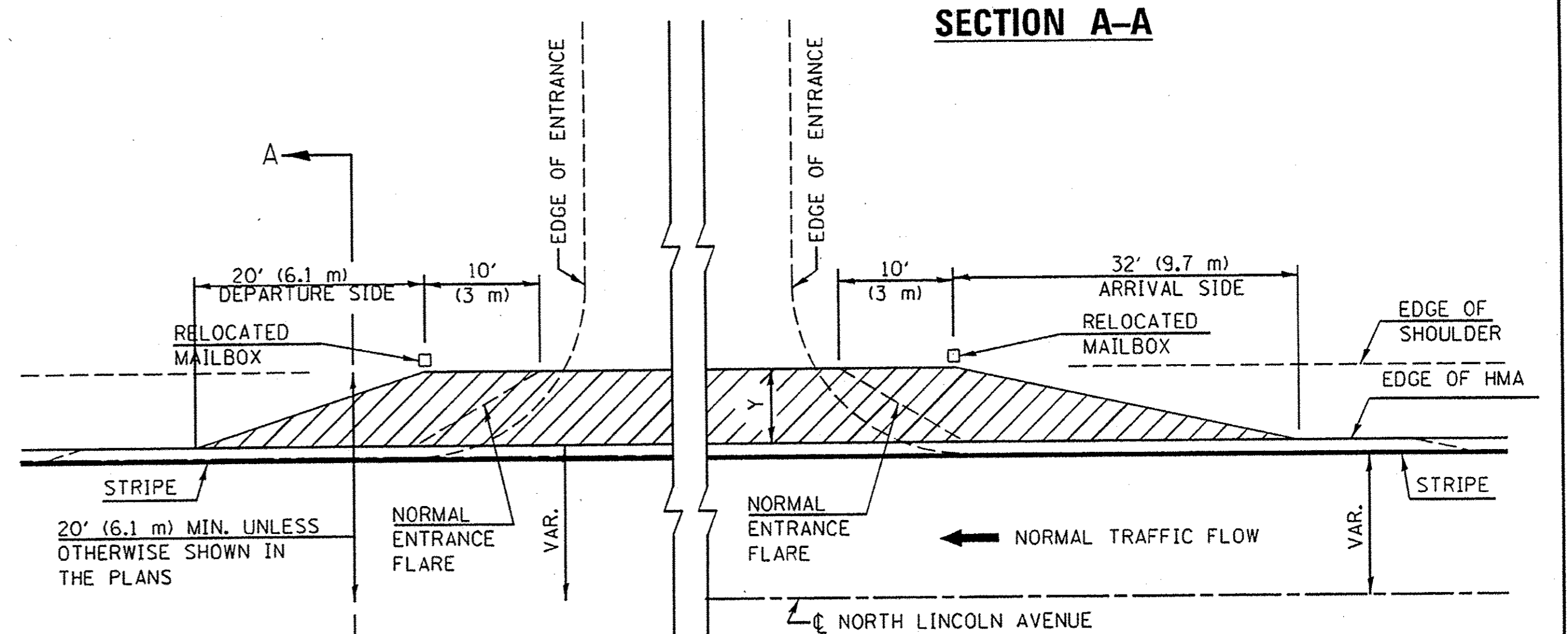
RIPRAP DETAIL -1
NOT TO SCALE



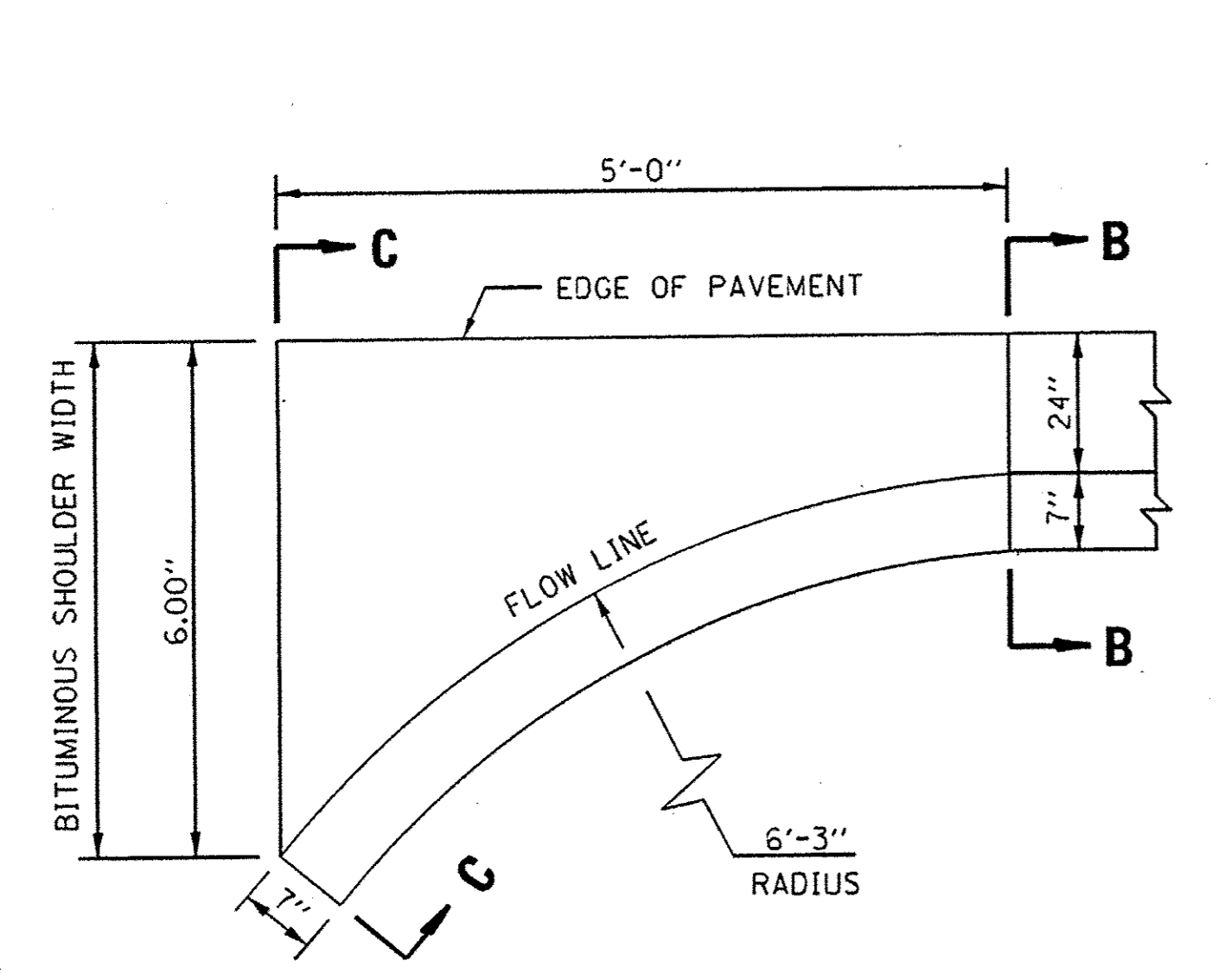
SECTION A-A ENTRANCES
NOT TO SCALE



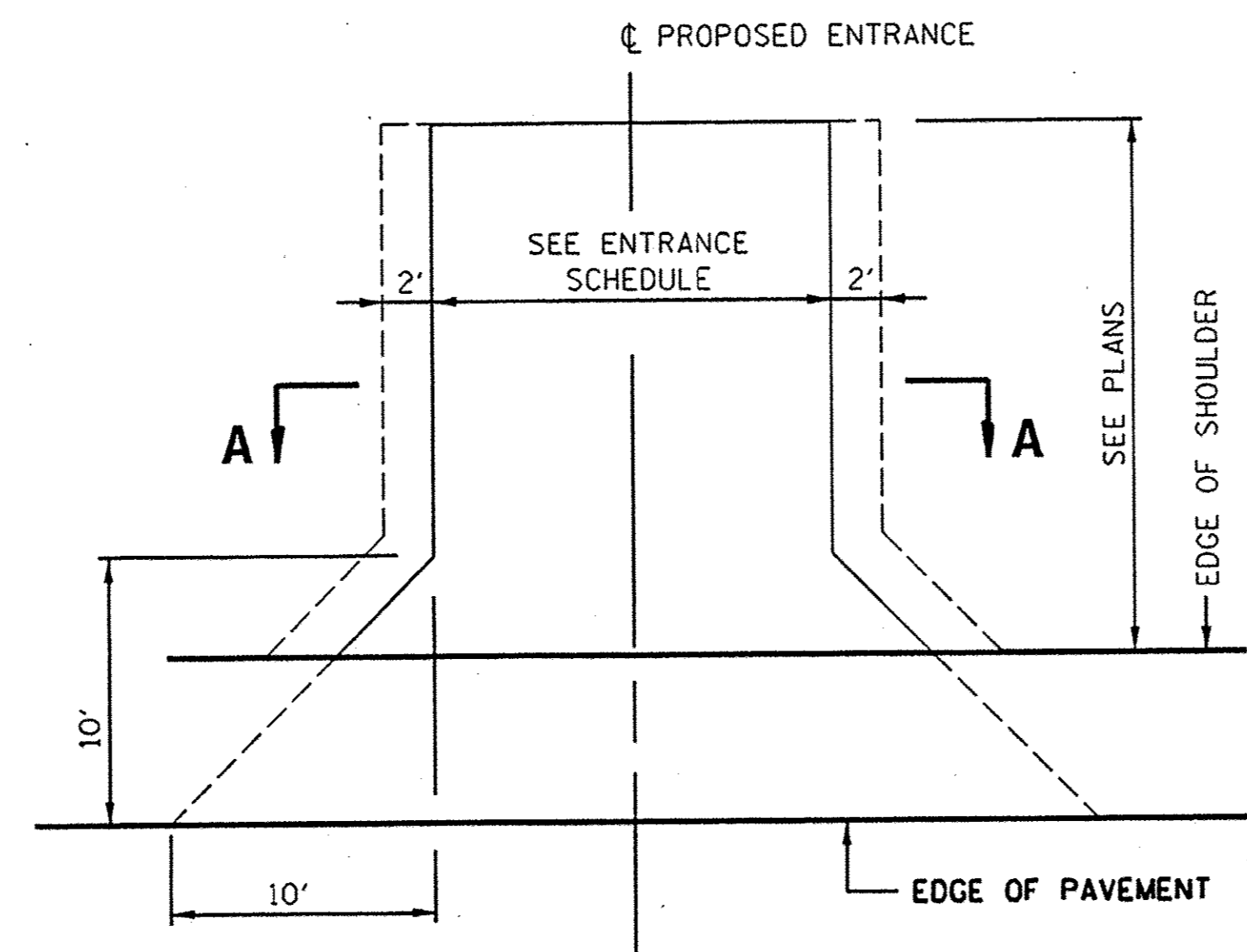
SECTION A-A



TYPICAL MAILBOX TURNOUT PLACEMENT ADJACENT TO ENTRANCE



CLASS SI CONCRETE (OUTLET), SPECIAL
NOT TO SCALE



PLAN
NOT TO SCALE

ENTRANCE SCHEDULE

LOCATION	ANGLE	WIDTH	P.E./F.E	MATERIAL	QUANTITY (TONS)
296+00.00, LT	90°	42'	F.E.	AGGREGATE SURFACE COURSE TYPE B	72.5
301+00.00, LT	90°	42'	F.E.	AGGREGATE SURFACE COURSE TYPE B	103.3
301+00.00, RT	90°	42'	F.E.	AGGREGATE SURFACE COURSE TYPE B	183.7
308+00.00, LT	90°	42'	F.E.	AGGREGATE SURFACE COURSE TYPE B	76.7
308+00.00, RT	90°	42'	F.E.	AGGREGATE SURFACE COURSE TYPE B	170.5
313+95.00, RT	90°	12'	P.E.	AGGREGATE SURFACE COURSE TYPE B	48.6
315+75.00, RT	90°	10'	P.E.	AGGREGATE SURFACE COURSE TYPE B	36.9
323+00.00, RT	90°	42'	F.E.	AGGREGATE SURFACE COURSE TYPE B	124.9
323+97.98, RT	90°	10'	P.E.	HOT MIX ASPHALT	6.5
325+20.00, RT	90°	10'	P.E.	AGGREGATE SURFACE COURSE TYPE B	31.4
329+00.00, LT	90°	42'	F.E.	AGGREGATE SURFACE COURSE TYPE B	105.6
329+00.00, RT	90°	42'	F.E.	AGGREGATE SURFACE COURSE TYPE B	13.2

DESIGNED	///
DRAWN	///
REVIEWED	///
DATE	///

FILE NAME =	USER NAME = hyan00951	DESIGNED -	REVISED - 10/26/2016
I:\14\jobs\14L0106\CAD\Road\Sheet\C-501.MacDetails_4.dgn		DRAWN -	REVISED -
		CHECKED -	REVISED -
Default		DATE - 12/17/2015	REVISED -

STATE OF ILLINOIS
DEPARTMENT OF TRANSPORTATION

MISCELLANEOUS DETAILS
NORTH LINCOLN AVENUE
SCALE: SHEET 4 OF 4 SHEETS STA. TO STA.

F.A.U. RTE.	SECTION	COUNTY	TOTAL SHEETS	SHEET NO.
1177	11-00334-01-PV	CHAMPAIGN	71	34
	14L0106		CONTRACT NO. 91503	
ILLINOIS FED. AID PROJECT				