



# Illinois Department of Transportation

2300 South Dirksen Parkway / Springfield, Illinois / 62764

October 26, 2016

SUBJECT: FAU 5773 (Avenue Of The Cities)  
Section 13-00258-00-LS (Moline)  
Rock Island County  
Contract No. 85631  
Item 104  
November 4, 2016 Letting  
Addendum (A)

## NOTICE TO PROSPECTIVE BIDDERS:

Attached is an addendum to the plans or proposal. This addendum involves revised and/or added material.

- 1. Revised sheet 67 of the Plans.**
- 2. Revised the Index of Special Provisions.**
- 3. Revised pages 15, 16 & 17 of the Special Provisions.**
- 4. Added pages 17A, 17B & 17C to the Special Provisions.**

Prime contractors must utilize the enclosed material when preparing their bid and must include any Schedule of Prices changes in their bidding proposal.

Bidders using computer-generated bids are cautioned to reflect any and all Schedule of Prices changes, if involved, into their computer programs.

Very truly yours,

Maureen M. Addis, P.E.  
Acting Bureau Chief of Design and Environment

A handwritten signature in cursive script, reading "Ted B. Walschleger, P.E.", with the letters "P.E." written in a smaller font to the right of the signature.

By: Ted B. Walschleger, P.E.  
Engineer of Project Management

**INDEX OF SPECIAL PROVISIONS**

LOCATION AND DESCRIPTION OF WORK..... 1  
 START DATE..... 1  
 COOPERATION WITH UTILITIES..... 1  
 PROTECTION OF EXISTING FIBER OPTIC CABLE..... 2  
 AGGREGATE BASE COURSE, TYPE B, 6"..... 2  
 PORTLAND CEMENT CONCRETE DRIVEWAY PAVEMENT, 8 INCH..... 3  
 PORTLAND CEMENT CONCRETE SIDEWALK 4 INCH..... 3  
 PORTLAND CEMENT CONCRETE SIDEWALK 6 INCH..... 3  
 DETECTABLE WARNINGS..... 4  
 SIDEWALK REMOVAL..... 4  
 FIRE HYDRANT TO BE MOVED..... 4  
 SPECIAL WASTE REMOVAL..... 5  
 NON-SPECIAL WASTE DISPOSAL..... 5  
 HAZARDOUS WASTE DISPOSAL..... 5  
 SPECIAL WASTE PLANS AND REPORTS..... 6  
 SOIL DISPOSAL ANALYSIS..... 6  
 CATCH BASINS TO BE ADJUSTED..... 6  
 MANHOLES TO BE ADJUSTED..... 6  
 CATCH BASINS TO BE ADJUSTED (SPECIAL)..... 6  
 INLETS TO BE ADJUSTED (SPECIAL)..... 6  
 STORM SEWERS (SPECIAL), 12"..... 7  
 UNDERGROUND CONDUIT, PVC, 2" DIA..... 8  
 CONDUIT SPECIAL..... 8  
 ELECTRICAL CABLE IN CONDUIT, 600V (XLP-TYPE USE) 3-1/C NO. 6, 1/C NO. 6 GROUND..... 9  
 DETECTOR LOOP REPLACEMENT..... 9  
 REMOVE EXISTING HANDHOLE..... 9  
 SHRUB REMOVAL..... 9  
 PORTLAND CEMENT CONCRETE SIDEWALK 4 INCH, SPECIAL..... 10  
 CURB REMOVAL AND REPLACEMENT..... 10  
 CURB REMOVAL (SPECIAL)..... 11  
 TRAFFIC CONTROL AND PROTECTION, (SPECIAL)..... 11  
 ELECTRICAL SERVICE CONNECTION..... 14  
 JUNCTION BOX (SPECIAL)..... 14  
 JUNCTION BOX TO BE ADJUSTED..... 14  
 HANDHOLE TO BE ADJUSTED..... 15  
 LIGHTING UNIT COMPLETE, SPECIAL..... 15  
 LIGHTING CONTROLLER, SPECIAL..... 15  
 STUMP REMOVAL..... 16  
 LANDSCAPE RESTORATION..... 16  
 CURB SAW CUT..... 17  
 CATCH BASINS, SPECIAL..... 17  
 CONSTRUCTION LAYOUT..... 17  
 STORM WATER POLLUTION PREVENTION PLAN (SWPPP)..... 18  
 LIGHTING UNIT SHOP DRAWINGS..... 17A

*Revised 10/26/2016*

This work shall consist of adjusting existing quazite boxes that currently serve the spare conduit to be utilized for the street lighting and the active 911 fiber optic cable and traffic signal cable. If the existing quazite box is damaged and cannot be adjusted a new junction box shall be installed and paid for as JUNCTION BOX (SPECIAL).

This work shall be paid for at the contract unit price per EACH for JUNCTION BOX TO BE ADJUSTED.

### **HANDHOLE TO BE ADJUSTED**

This pay item shall include the furnishing of all equipment, labor, and materials required to construct HANDHOLES TO BE ADJUSTED in accordance with the applicable parts of Section 814 of the Standard Specifications and these Special Provisions.

This work shall consist of adjusting the existing handholes to the proposed grade of the improvement. Any grinding, saw cuts, or expansion joints needed to complete HANDHOLES TO BE ADJUSTED shall be included at no additional cost to the contract.

This work shall be paid for at the contract unit price per EACH for HANDHOLES TO BE ADJUSTED.

### **LIGHTING UNIT COMPLETE, SPECIAL**

This pay item shall include the furnishing of all equipment, labor, and materials required to construct LIGHTING UNIT COMPLETE, SPECIAL in accordance with the applicable portions of Section 821 of the Standard Specifications, the attached shop drawings and spec sheet, and these Special Provisions.

The fixtures provided shall be LED. This item shall include all work, labor, materials, concrete foundation, steel reinforcement, conduit, electrical wire, excavation, and all other work necessary to furnish the decorative light as shown in the plans and shop drawings at no additional cost to the contract.

See approved shop drawings and the LIGHTING UNIT COMPLETE, SPECIAL detail on the plans. Follow all manufacturer recommended installation.

This work shall be paid for at the contract unit price per EACH for LIGHTING UNIT COMPLETE, SPECIAL.

### **LIGHTING CONTROLLER, SPECIAL**

This pay item shall include the furnishing of all equipment, labor, and materials required to construct LIGHTING CONTROLLER, SPECIAL in accordance with Section 825 of the Standard Specifications, these Special Provisions, and the details given in the plans. All power sources are 120/240V single phase.

This work shall consist of furnishing and installing a new Square D Night-master Class 8903 or approved equivalent lighting controller to the specifications given in the details in the plans and these Special Provisions. This work shall be coordinated with Mid-American Energy and the City of Moline. Mid-American Energy will supply the new meters. The Contractor will be responsible for providing meter sockets, installing these meters, and any additional wiring necessary for system function. Any additional materials, including but not limited to, wire, connectors, bolts, etc. necessary for this work shall also be included in this pay item with no additional compensation allowed.

Mid-American Energy may charge fees for their services in regards to this project. This may include service disconnections, reconnections, meters, or other coordination fees. The Contractor shall be responsible for coordinating this work with Mid-American and these fees shall be included in the Contractor's total bid price for this contract with no additional compensation allowed.

This work shall be paid for at the contract unit price for each "LIGHTING CONTROLLER, SPECIAL.

## **STUMP REMOVAL**

This pay item shall include the furnishing of all equipment, labor, and materials required to complete STUMP REMOVAL in accordance with the applicable parts of Section 201 of the Standard Specifications and these Special Provisions.

This work shall consist of removal of the existing tree stump either complete removal or to a depth of 2' from the proposed grade.

This work shall be paid for at the contract unit price per EACH for STUMP REMOVAL.

## **LANDSCAPE RESTORATION**

This pay item shall include the furnishing of all equipment, labor, and materials required to complete LANDSCAPE RESTORATION in accordance with Section 201, 250, 251, 280 of the Standard Specifications and these Special Provisions.

This work shall include replacing bushes, plantings, mulch, and/or landscape rock in landscaped areas disturbed by construction, all seeding, nutrients, fertilizer, topsoil, and any earth excavation, transportation, placing, disposal, or stabilization necessary to complete landscape restoration. The contractor shall match and restore all areas back to their original condition, with plantings, rocks, and mulch selected that most closely matches the existing site conditions. The above mentioned work shall be included in the contract unit price per LUMP SUM for LANDSCAPE RESTORATION.

This pay item shall not include areas damaged due to Contractor negligence. Those areas shall be repaired to existing condition at the Contractor's expense.

Modify Section 250.07 of the Standard Specifications for Road and Bridge Construction to include the Contractor guarantee a 75 percent uniform growth over the entire seeded area(s) after one growing season, with no exception to the timing of the seeding. After one growing season, areas not sustaining 75 percent uniform growth shall be interseeded or reseeded, as determined by the Engineer, at no additional cost to the contract.

Topsoil (Furnished from outside of the R.O.W.) shall be loamy soil from the A horizon of soil profiles of local soils. It must have an organic content of at least 5%. It shall be free from large roots, sticks, weeds, brush, or stones larger than 1/4 inch in diameter, or other litter and waste products. At least 90 percent must pass the No. 10 sieve and the PH must be between 5.0 and 7.0. Topsoil shall be placed to a minimum four inch (4") thickness. At the Engineer's request, the Contractor shall provide material verification.

Materials shall be CLASS 1, LAWN MIXTURE.

A commercial grade starter fertilizer having a 3:1:2 ratio shall be applied according to the manufacturer's specified rate per square yard, and lightly tilled into the seedbed prior to the sowing of the seed.

Before placing topsoil, the area to be seeded shall be free from weeds, clods, rocks, stones, sticks, rivulets, gullies, crusting, caking, and or other undesirable material to the satisfaction of the Engineer. Before seeding, the seed bed shall be free of all material over 1/4 inch in diameter. No seeding shall be done until the seed bed is approved by the Engineer.

Mulch as per Article 251.03, shall be used to protect the seed at no additional cost to the contract.

This work shall be paid for at the contract unit price per LUMP SUM for LANDSCAPE RESTORATION.

### **CURB SAW CUT**

This pay item shall include the furnishing of all equipment, labor, and materials required to complete CURB SAW CUT in accordance with applicable portions of Section 442 of the Standard Specifications and these Special Provisions.

This work shall consist of removing the existing curb by the method of a saw cut, to match the location of the proposed driveway pavement. Curb saw cut shall be cut to match the existing dropped curb elevation to the existing top of curb. The cut surface shall be free of spalls and cracks, and shall conform to the appropriate IDOT Highway Standard. If the final product does not meet this specification, complete removal and replacement of the curb and gutter shall be required at the Contractor's expense.

This work shall be paid for at the contract unit price per FOOT for CURB SAW CUT.

### **CATCH BASINS, SPECIAL**

This pay item shall include the furnishing of all equipment, labor, and materials required to construct CATCH BASINS SPECIAL in accordance with applicable portions Section 602 of the Standard Specifications and these Special Provisions.

This work shall include all materials as detail in the plans (Moline Standard #21). Shop drawings for the double catch basin shall be submitted to the City of Moline for acceptance. The frame and grate as detailed out for the double catch basin shall also be included in the unit price for this pay item and submitted to the City of Moline for acceptance.

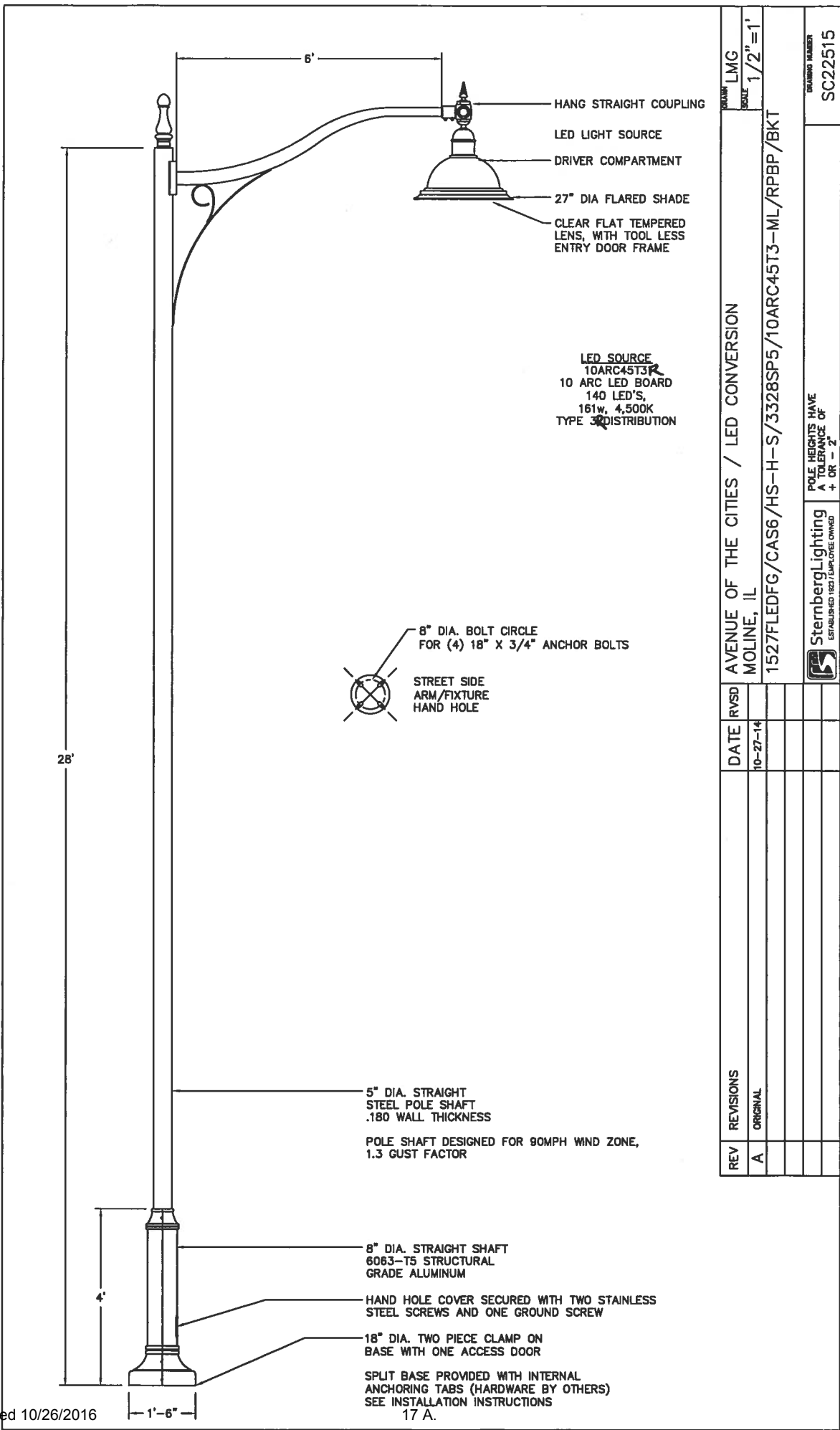
This work shall be paid for at the contract unit price per EACH for CATCH BASINS SPECIAL.

### **CONSTRUCTION LAYOUT**

This pay item shall include the furnishing of all equipment, labor, and materials required to complete CONSTRUCTION LAYOUT in accordance with Section 105.09 of the Standard Specifications and these Special Provisions.

The City of Moline will provide a list of all known control points. However, the Contractor will be responsible for locating and reestablishing all control needed for the project. The Contractor will be responsible for all construction staking.

This work shall be paid for at the contract unit price per LUMP SUM for CONSTRUCTION LAYOUT.

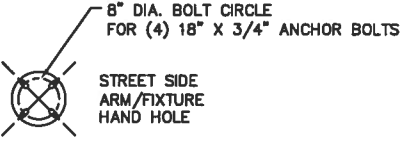


28'

6'

- HANG STRAIGHT COUPLING
- LED LIGHT SOURCE
- DRIVER COMPARTMENT
- 27" DIA FLARED SHADE
- CLEAR FLAT TEMPERED LENS, WITH TOOL LESS ENTRY DOOR FRAME

LED SOURCE  
 10ARC45T3  
 10 ARC LED BOARD  
 140 LED'S,  
 161w, 4,500K  
 TYPE  $\phi$  DISTRIBUTION



5" DIA. STRAIGHT  
 STEEL POLE SHAFT  
 .180 WALL THICKNESS

POLE SHAFT DESIGNED FOR 90MPH WIND ZONE,  
 1.3 GUST FACTOR

8" DIA. STRAIGHT SHAFT  
 6063-T5 STRUCTURAL  
 GRADE ALUMINUM

HAND HOLE COVER SECURED WITH TWO STAINLESS  
 STEEL SCREWS AND ONE GROUND SCREW

18" DIA. TWO PIECE CLAMP ON  
 BASE WITH ONE ACCESS DOOR

SPLIT BASE PROVIDED WITH INTERNAL  
 ANCHORING TABS (HARDWARE BY OTHERS)  
 SEE INSTALLATION INSTRUCTIONS  
 17 A.

4'

1'-6"

REV	REVISIONS	DATE	RVSD	AVENUE OF THE CITIES / LED CONVERSION MOLINE, IL	DRAWING NUMBER SC22515
A	ORIGINAL	10-27-14		1527FLEDFG/CAS6/HS-H-S/3328SP5/10ARC45T3-ML/RPBP/BKT	POLE HEIGHTS HAVE A TOLERANCE OF + OR - 2

Added 10/26/2016

# 1527LED OMEGA SERIES

LED



CLICK FOR FAQ'S



EPA .93 (ft<sup>2</sup>)  
WEIGHT 38 LBS

RATED IP65  
IP 65

LUMEN RANGE 5,240 to 16,300

LIFE SPAN L70 UP TO 100,000 HOURS

7 YEAR WARRANTY



JOB NAME AOTC, 34th - 41st Street

FIXTURE TYPE

MEMO TE-00D2(161)

## BUILD A PART NUMBER

ORDERING EXAMPLE: 2A-1527LED-F-4ARC45T5-MDH03-SVI-HSHS/CA4/5214P5/UBKT

Mounting Config.	Fixture	Shade Edge	LED	CCT	Type	Driver	Lens	Optional Control Receptacle	Optional Control	Option Fuse	Option Hang-straight	Option Term. Block	Option House Side Shield	Arm See Arm Spec Sheets	Pole See Pole Spec Sheets	Finish
1A	1527LED	F	10ARC	45	T3R	MDL03	FG	---	---	---	---	---	---	CAS6	3328S	UBKT

### Mounting Configuration

(Click here to link to mounting configuration specification page)

- IW • 2A90 • 4A • SH44
- 1A • 3A • 1AM • CH44
- 2A • 3A90 • 2AM • CAT

W = Wall Mount A = Arm Mount AM = Arm Mid-Mount  
SH = Stem Hung CH = Chain Hung CAT = Catenary

### Fixture

- 1527LED • 1527LEDSM

### Shade Edge

- R (Round Edge) • F (Flared Edge)

### LED

- 10ARC • 8ARC • 6ARC • 4ARC

### CCT - Color Temperature (K)

- 45(OO) • 35(OO) • 27(OO)

### Type

- T2 • T3 • T3R • T4 • T5

### Driver

- MDL03 (120v-277v, 350Ma)
- MDH03 (347v-480v, 350Ma)

### Lens

- FG (Flat Glass)
- SG (Sag Glass)
- FSG (Frosted Sag Glass)
- SVI (Flat Soft Vue Medium Acrylic Lens)
- SV2 (Flat Soft Vue Heavy Acrylic Lens)

### Options

- R<sup>1</sup> Pin control receptacle only
- R5<sup>1</sup> 5-Pin control receptacle only
- R7<sup>1</sup> 7-Pin control receptacle only
- PE<sup>2</sup> Twist-Lock Photocontrol (120v-277v)
- PE3<sup>2</sup> Twist-Lock Photocontrol (347v)
- PE4<sup>2</sup> Twist-Lock Photocontrol (480v)
- SC<sup>2</sup> Shorting Cap
- PEC Electronic Button Photocontrol (120v-277v)
- PEC4 Electronic Button Photocontrol (480v)
- FHD<sup>3</sup> Double Fuse and Holder
- HSHS<sup>4</sup> Standard Horizontal Hangstraight, Spike Finial

- HSHN<sup>4</sup> Standard Horizontal Hangstraight, No Finial
- HSHB<sup>4</sup> Standard Horizontal Hangstraight, Ball Finial
- HSCB<sup>4</sup> Clamp Style Horizontal Hangstraight, Ball Finial
- HSCS<sup>4</sup> Clamp Style Horizontal Hangstraight, Spike Finial
- HSCN<sup>4</sup> Clamp Style Horizontal Hangstraight, No Finial
- EZ<sup>4</sup> Vertical Hangstraight, Large, "EZ" Mount
- HSV<sup>4</sup> Vertical Hangstraight, Standard
- TB Terminal Block
- HSS 120° House Side Shield

<sup>1</sup> Only available with HSH, HSC, & SM.

<sup>2</sup> Requires control receptacle.

<sup>3</sup> Ships loose for installation in base.

<sup>4</sup> Not for use with 1531LEDSM.

### Arm (Click here to link to arm specification page)

See Arms & Wall Brackets specification sheets.

- CA • CSA • FFA • CAS • DAG • RA

### Pole (Click here to link to pole specification page)

See Pole specification sheets.

### Finish (Click here to view paint finish sheet)

#### Standard Urban Finishes<sup>5</sup>

- UBKT Urban Black Textured
- UBK Urban Black Matte
- UBT Urban Bronze Textured
- UB Urban Bronze Matte
- ULBT Urban Light Bronze Textured
- ULB Urban Light Bronze Matte
- USLT Urban Silver Textured
- USL Urban Silver Matte
- UWHT Urban White Textured
- UWH Urban White Matte
- UCHS Urban Champagne Satin Smooth

<sup>5</sup> Smooth finishes are available upon request.

#### Custom Urban Finishes<sup>6</sup>

- CM Custom Match
- <sup>6</sup> Custom colors require upcharge.

## Specifications 3328SP5

### Fixture

The 1527LED Omega series is medium scale, decorative downlight fixture with a spun aluminum bell styled dome. The dome is available with two types of shades: round edge (R) and flared edge (F) styles. The luminaire measures 27" outside diameter and 19" overall height. The luminaire has a hinged door for tool-less driver and LED access. The luminaire is U.L. listed in U.S. and Canada.

### LEDs

The luminaire shall use high output, high brightness LED's. They shall be mounted in arrays, on printed circuit boards designed to maximize heat transfer to the heat sink surface. The arrays shall be roof mounted to minimize up-light. The LED's and printed circuit boards shall be environmentally friendly and 100% recyclable, they shall also be protected from moisture and corrosion by a conformal coating of 1 to 3 mils. They shall not contain lead, mercury or any other hazardous substances and shall be RoHS compliant. The LED life rating data shall be determined in accordance with IESNA LM-80. They shall operate in a -40°C (-40°F) to +50°C (122°F) ambient air temperature range. The High Performance white LED's will have a life expectancy of approximately 100,000 hours with not less than 70% of original brightness (lumen maintenance), rated at 25°C. The High Brightness, High Output LED's shall be 4500K (3500K or 2700K option) color temperature with a minimum CRI of 70. The luminaire shall have a minimum \_\_\_\_\_ (see table) delivered initial lumen rating when operated at steady state with an average ambient temperature of 25°C (77°F).

### Optics

The luminaire shall be provided with individual, refractor type optics applied to each LED. The luminaire shall provide Type \_\_\_\_ (2, 3, 3R, 4 or 5) light distribution per the IESNA classifications. Testing shall be done in accordance with IESNA LM-79.

See next page



ESTABLISHED 1923 / EMPLOYEE OWNED

**3300 GATEWAY SERIES**

**SPECIFICATIONS**

**GENERAL**

The ~~28~~ **28** ft tall\* decorative post shall be aluminum, one-piece construction with base and transition cover. The 18" diameter cast aluminum smooth base shall be welded to an 8" diameter base shaft that transitions to a 5" or 6" diameter aluminum shaft. The model shall be Sternberg Lighting #3300 or #3300R for candy cane poles. The pole shall be U.L. or E.T.L. listed in U.S. and Canada.

**CONSTRUCTION**

The base shall be designed with a smoothly curved pedestal bottom base cover over its square base and transition to a straight smooth base section and shall be made of heavy wall, 356 alloy cast aluminum and ASTM 6061 extruded aluminum. It shall have a 3/4" thick floor cast as an integral part of the base. The base top will have a smoothly curved transition to the shaft. The shaft shall be externally welded circumferentially to the base.

\_\_\_ The **smooth tapered shaft** shall be made of ASTM 6063 extruded aluminum and tempered to a T6 condition.

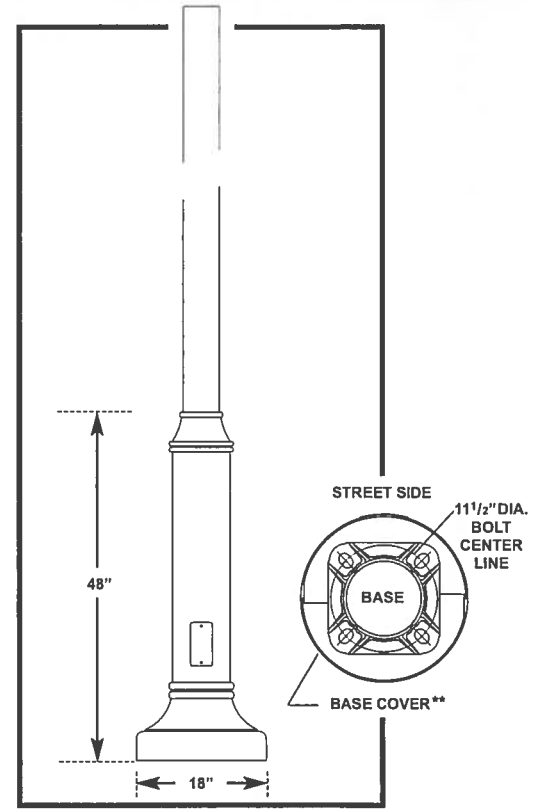
✓ The **smooth straight shaft** shall be made of ASTM 6063 extruded aluminum and tempered to a T6 condition.

\_\_\_ The **straight fluted shaft** shall be made of ASTM 6061 extruded aluminum and tempered to a T6 condition. It shall have a decorative fluted 3" O.D. tenon.

**INSTALLATION**

Four, hot-dipped galvanized "L" type anchor bolts shall be provided with the post for anchorage. A door shall be provided for wiring and anchor bolt access. It shall be secured with tamper proof, stainless steel hardware. Post will be provided with a grounding stud mounted on the base floor opposite the access door.

Indicate the type of shaft needed (above)



\*\*See installation template for exact door position. Bolt circle dimensions may change on taller poles.

Extruded Poles		18" Diameter Base x 48" High	
<p>5"- 4" OD 33-_-T5-4 08' 10' 12' 14' 16' 18' 20'</p> <p>SMOOTH TAPERED SHAFT</p>	<p>5" OD 3328P5 08' 10' 12' 14' 16' 18' 20'</p> <p>SMOOTH STRAIGHT SHAFT</p>	<p>6" OD 33-_-P6 08' 10' 12' 14' 16' 18' 20'</p> <p>SMOOTH STRAIGHT SHAFT</p>	<p>5" OD 33-_-FP5 08' 10' 12' 14' 16' 18' 20'</p> <p>STRAIGHT FLUTED SHAFT</p>

\*For candy cane poles insert \_\_\_AG ft (feet - above grade height). See diagram on reverse side.  
Added 10/26/2016 17 C.