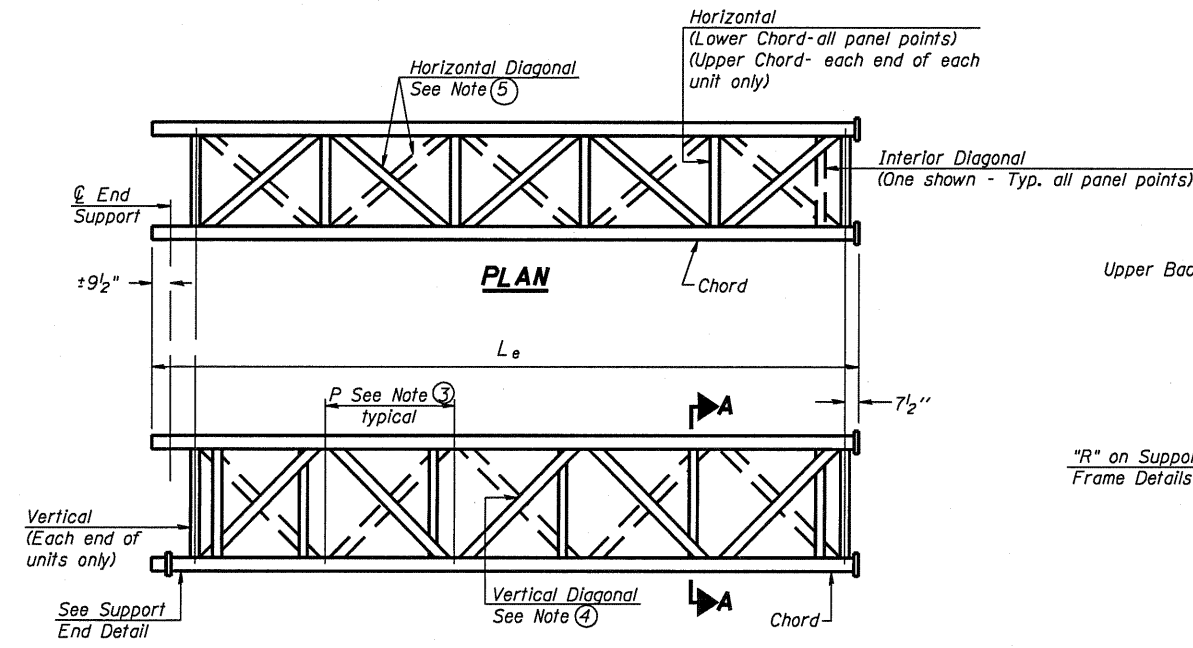
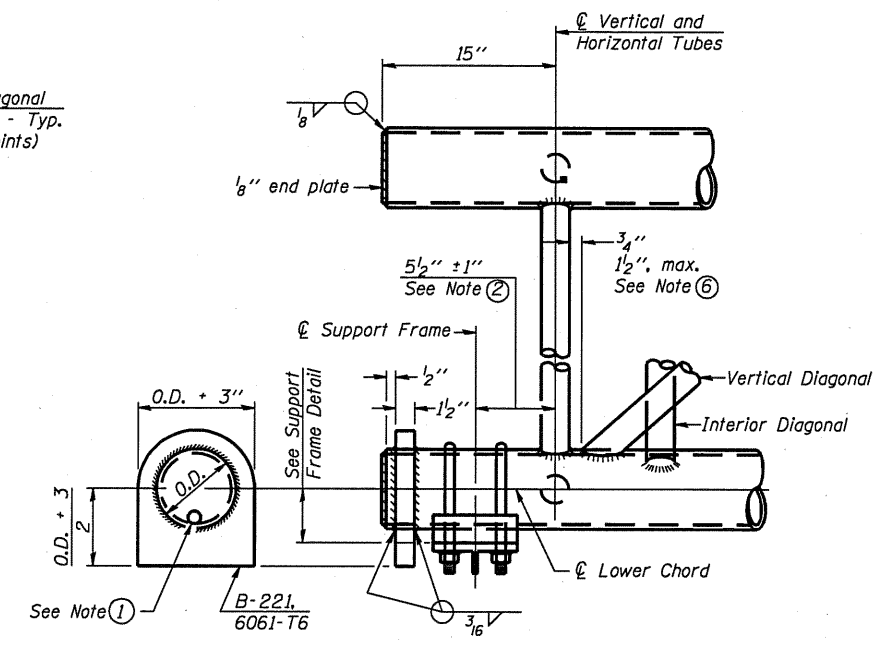


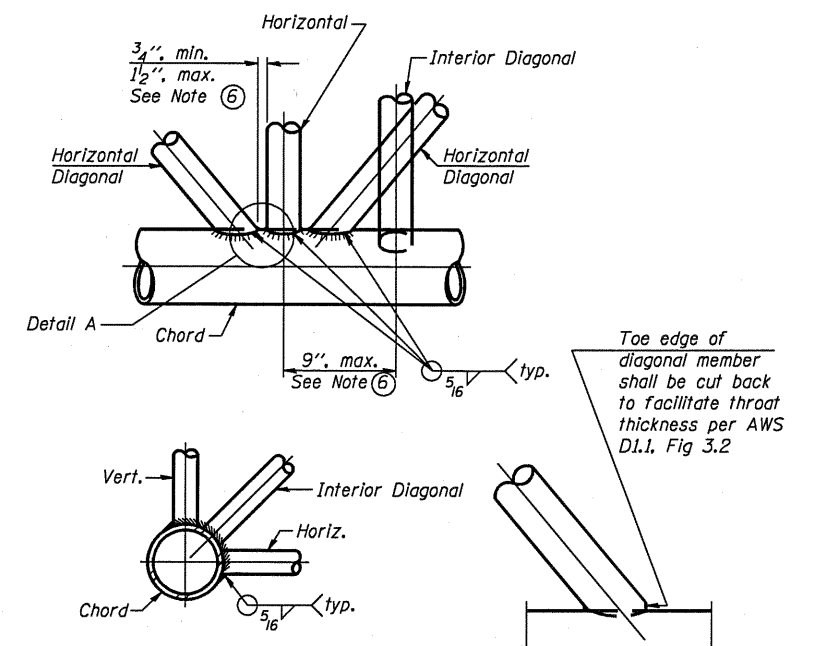
**ELEVATION
TYPICAL INTERIOR UNIT**
Even number of panels/interior unit required.



**ELEVATION
TYPICAL EXTERIOR UNIT**
Even or odd number of panels/exterior units allowed.

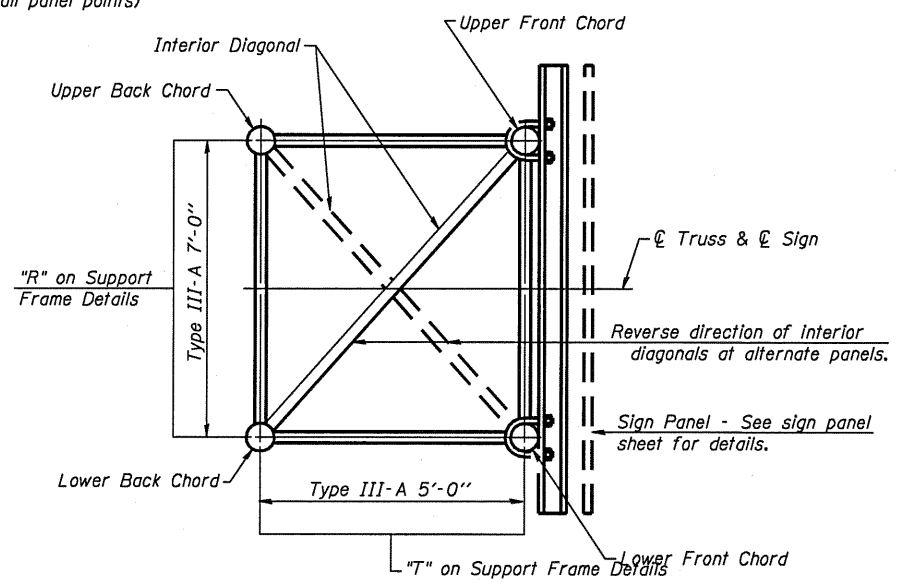


SUPPORT END DETAIL FOR EXTERIOR UNIT



TYPICAL JOINT DETAILS

DETAIL A



SECTION A-A

- ① Contractor may alternatively use standard aluminum drive-fit cap to close end. 1/2" φ drain hole in end plate/drive-fit cap. (Typ. at ends of all chords)
- ② 5 1/2" end dimension may vary by ±1" to provide uniform panel spacing (P).
- ③ Panel spacing (P) shall be uniform for entire truss and between 4'-0" and 5'-0" for Type I-A or 4'-0" and 5'-6" for Types II-A and III-A.
- ④ Vertical Diagonals in front and back face shall alternate.
- ⑤ Hidden lines show wind bracing alternates direction between planes of top and bottom chords.
- ⑥ All diagonals shall be detailed for minimum offset from the panel point based on the following: Offset shall be such as to provide a 3/4" minimum to 1 1/2" maximum clearance between any diagonal and any horizontal or vertical member, and to provide clearance for U-bolt connections of signs or walkway brackets.

OS-A-2 7-1-10

FILE NAME *	USER NAME * woodshankr1	DESIGNED - RON WOODSHANK	REVISED -	STATE OF ILLINOIS DEPARTMENT OF TRANSPORTATION	OVERHEAD SIGN STRUCTURES - ALUMINUM TRUSS DETAILS FOR TRUSS TYPE III-A	F.A.I. RTE.	SECTION	COUNTY	TOTAL SHEETS	SHEET NO.	
os\pw_work\p1\dot\woodshankr1\d0235124\	6131-Details.dgn	DRAWN - RON WOODSHANK	REVISED -			VAR	0-3 OVD SIN STR REPL 2011-08	VAR	25	8	
	PLOT SCALE = 100,0000 ' / IN.	CHECKED -	REVISED -			SCALE: _____ SHEET NO. 2 OF 7 SHEETS STA. _____ TO STA. _____					
	PLOT DATE = Sep 23, 2010 - 09:34:27 AM	DATE -	REVISED -			ILLINOIS CONTRACT NO. 46131					