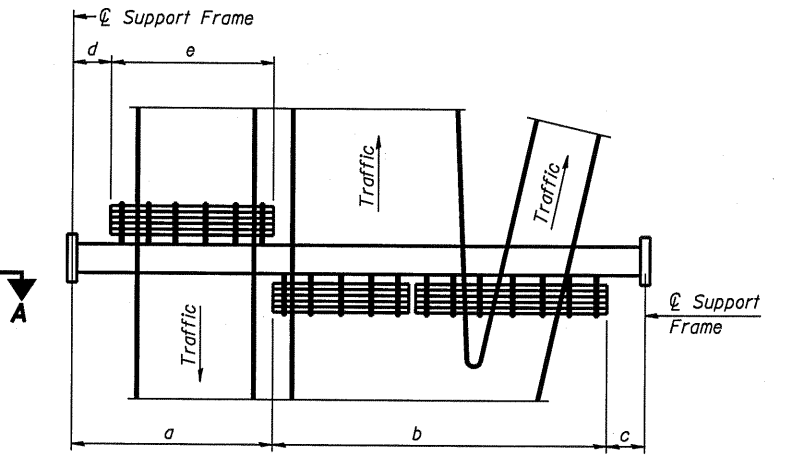
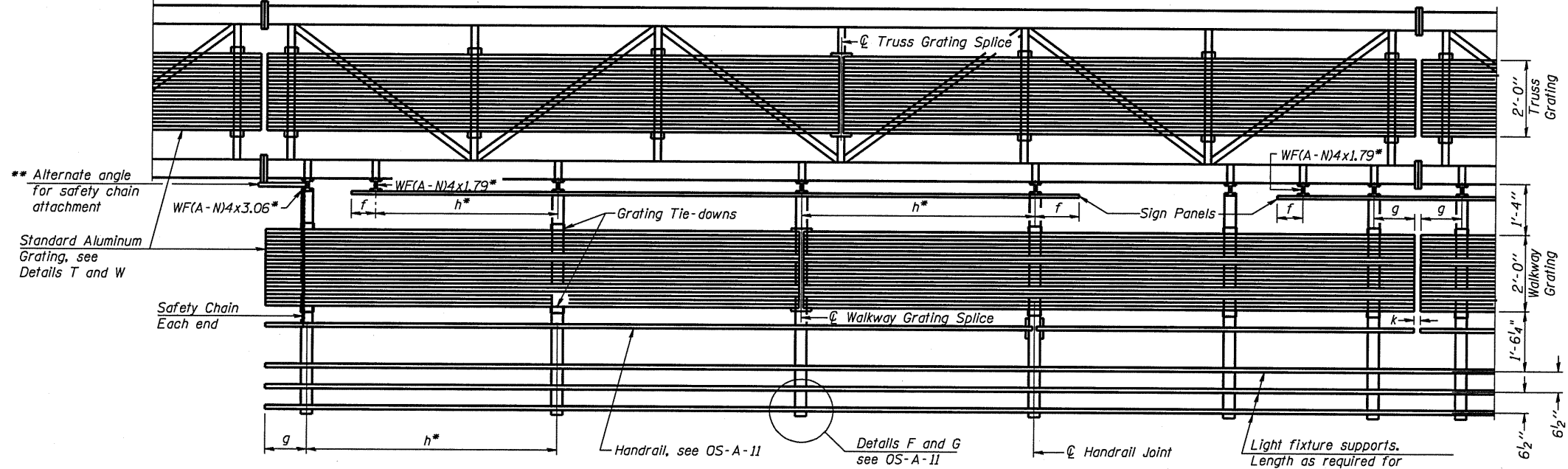


**TYPICAL FRONT ELEVATION**

With lights and handrail omitted for clarity.  
For Section B-B, see Base Sheet OS-A-10.



**PLAN WALKWAY AND HANDRAIL SKETCH**  
(Road plan beneath truss varies)



**SECTION A-A**

Handrail and walkway shall span a minimum of three brackets between splices and/or gap joints. Place all sign and walkway brackets as close to panel points as practical. Handrail joints, grating, and light support splices placed as needed.

**BRACKET TABLE**

Sign Width		Number Brackets Required
Greater Than	Less Than or Equal To	
	8'-0"	2
8'-0"	14'-0"	3
14'-0"	20'-0"	4
20'-0"	26'-0"	5
26'-0"	32'-0"	6

**Notes:**  
 \* Space walkway brackets WF(A-N)4x3.06 and sign brackets WF(A-N)4x1.79 for efficiency and within limits shown:  
 $f = 12''$  maximum,  $4''$  minimum (End of sign to  $\phi$  of nearest bracket)  
 $g = 12''$  maximum,  $4''$  minimum (End of walkway grating to  $\phi$  of nearest support bracket)  
 $h = 6'-0''$  maximum ( $\phi$  to  $\phi$  sign and/or walkway support brackets, WF(A-N)4x1.79 or WF(A-N)4x3.06)  
 $k = 2''$  maximum gap between adjacent walkway grating sections and handrail ends  
 \*\* If walkway bracket at safety chain location is behind sign, add angle to bracket, see Alternate Safety Chain Attachment on Base Sheet OS-A-11.

For Details T and W, Section B-B and Grating Splice Details see Base Sheet OS-A-10.  
For Handrail Details see Base Sheet OS-A-11.

Structure Number	Station	a	b	c	d	e	Walkway Grating and Handrail Lengths

Truss grating to facilitate inspection shall run full length (center to center of support frames)  $\pm 12''$  on overhead trusses. Cost of truss grating is included in "Overhead Sign Structure".

Walkway and Truss Grating width dimensions are nominal and may vary  $\pm 1/2''$  based on available standard widths.

OS-A-9 7-1-10

**LOCATION 1 AND 2  
THIS SHEET FOR INFORMATION ONLY**

FILE NAME * c:\pwwork\p\idot\woodshankr\08235124	USER NAME * woodshankr 6131-Details.dgn	DESIGNED - RON WOODSHANK	REVISED -	<b>STATE OF ILLINOIS DEPARTMENT OF TRANSPORTATION</b>	<b>CANTILEVER SIGN STRUCTURES ALUMINUM WALKWAY DETAILS</b>	F.A.I. RTE. VAR	SECTION D-3 OVD SIN STR REPL 2011-08	COUNTY VAR	TOTAL SHEETS 25	SHEET NO. 12	
PLOT SCALE = 1/8" = 1'-0"	CHECKED -	REVISOR -	SCALE: _____			SHEET NO. 5 OF 7 SHEETS	STA. _____ TO STA. _____	ILLINOIS		CONTRACT NO. 46131	
PLOT DATE = Sep 23, 2010 - 8:35:35 AM	DATE -	REVISOR -									