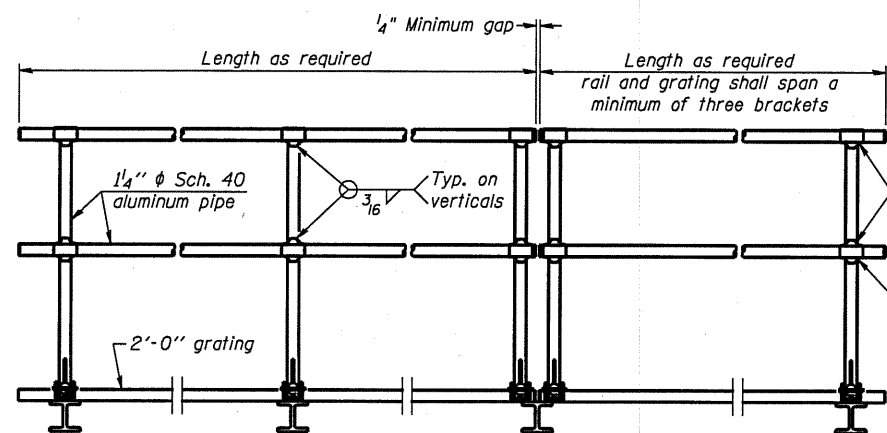


SIDE ELEVATION
(Showing safety chain w/o sign)

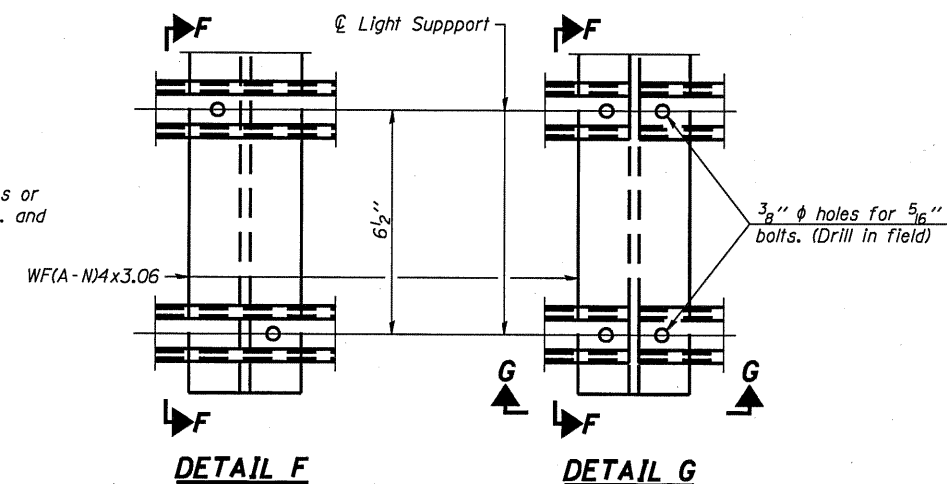


FRONT ELEVATION

HANDRAIL DETAILS

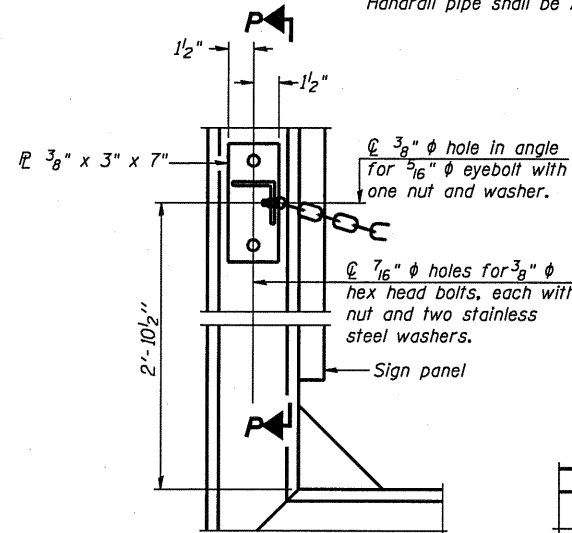
Handrail pipe shall be ASTM B241 or B429, Alloy 6063-T6 or Alloy 6061-T6.

- ① Install standard force-fit end caps or weld 1/8 inch end plates with 1/8 inch c.f.w. and grind smooth. (All rail ends)
- ② Horizontal handrail member shall be continuous thru fitting. Provide 1/16 inch hole in fitting for 3/8 inch bolt. Field drill 1/16 inch hole in horizontal rail member. Provide locknut and two stainless steel washers for bolt. (Use 5/16 inch eyebolts in 1/16 inch holes on top rail at ends only.)



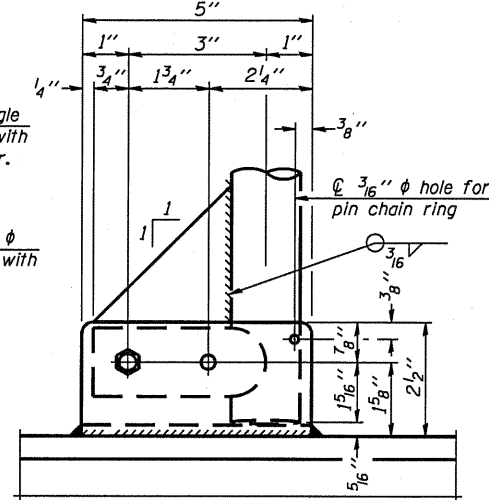
DETAIL F

DETAIL G

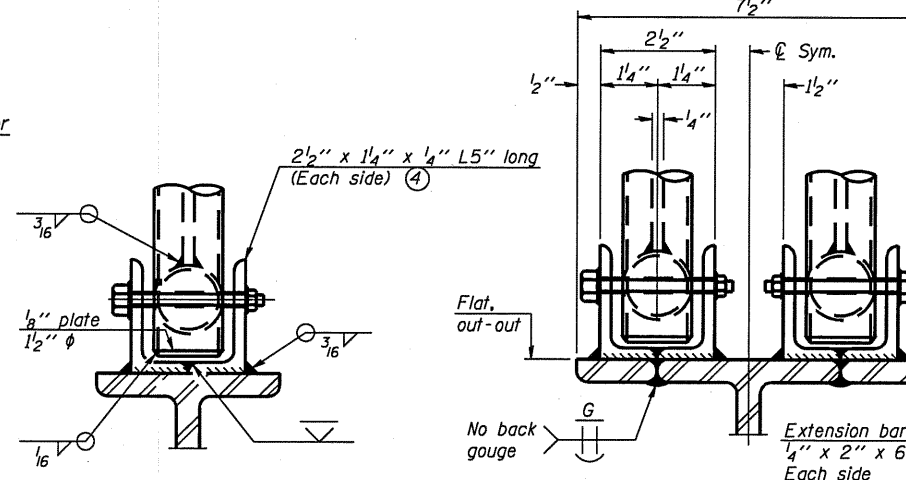


ALTERNATE SAFETY CHAIN ATTACHMENT

(With Sign Present)
Items not shown same as "Side Elevation" of "Handrail Details"



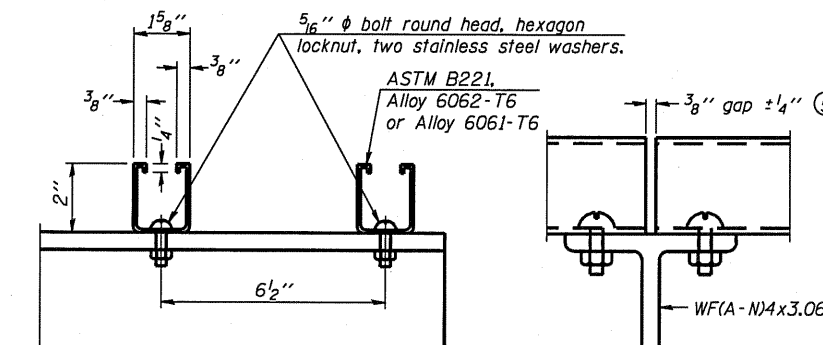
SIDE ELEVATION



FRONT ELEVATION

See "Elevation" at right for dimensions.

ELEVATION AT HANDRAIL JOINT

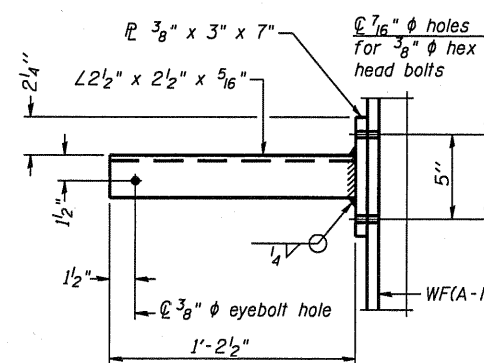


SECTION F-F

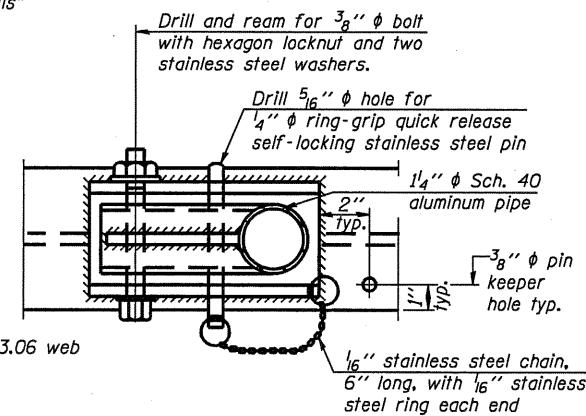
SECTION G-G

LIGHTING FIXTURE MOUNTS (IF REQUIRED)

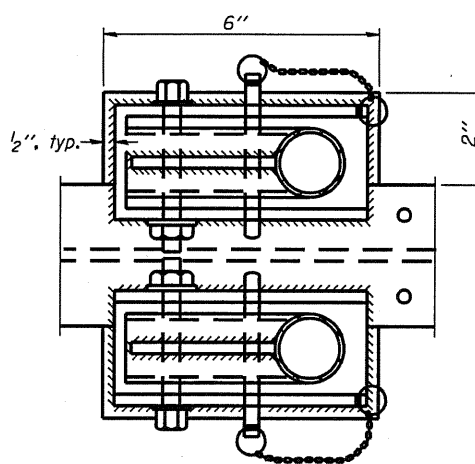
- ⑤ Field cut ends of light support channels shall be free of burrs or hazardous projections and coated with zinc-rich primer or equivalent.



SECTION P-P

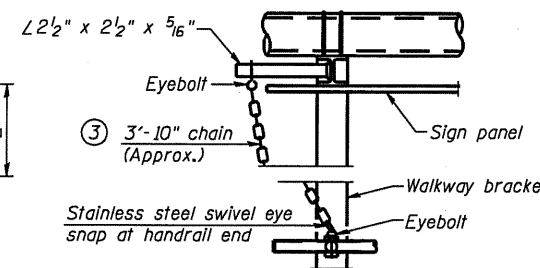


**PLAN
DETAIL E HANDRAIL HINGE**



PLAN AT HANDRAIL JOINT

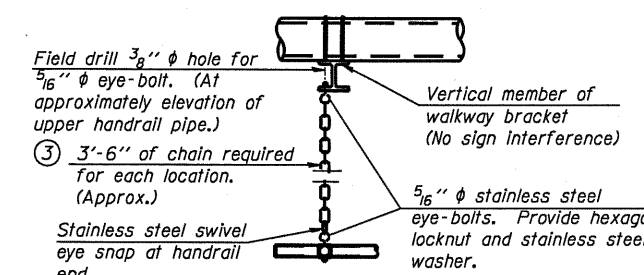
Details not shown same as "PLAN"



ALTERNATE SAFETY CHAIN ATTACHMENT

Details not shown similar to "Safety Chain" Details (Walkway omitted for clarity)

- ③ 3/16 inch Type 304L stainless steel chain, approximately 12 links per foot.
- ④ Extrusions may be used in lieu of the details shown, with approval of the Engineer.



SAFETY CHAIN

One required for each end of each walkway.

OS-A-11 7-1-10

**LOCATION 1 AND 2
THIS SHEET FOR INFORMATION ONLY**

FILE NAME = c:\pw\work\p1dot\woodshankr\1\d0235124\	USER NAME = woodshankr1 6131-Detail.dgn	DESIGNED - RON WOODSHANK	REVISED -	STATE OF ILLINOIS DEPARTMENT OF TRANSPORTATION	OVERHEAD SIGN STRUCTURES ALUMINUM HANDRAIL DETAIL	F.A.I. RTE. VAR	SECTION D-3 OVD SIN STR REPL 2011-08	COUNTY VAR	TOTAL SHEETS 25	SHEET NO. 14
PLOT SCALE = 100.0000 / IN.	CHECKED -	REVISOR -	SCALE: _____			SHEET NO. 7 OF 7 SHEETS	STA. _____ TO STA. _____	ILLINOIS	CONTRACT NO. 46131	
PLOT DATE = Sep 23, 2010 - 09:36:22 AM	DATE -	REVISOR -								