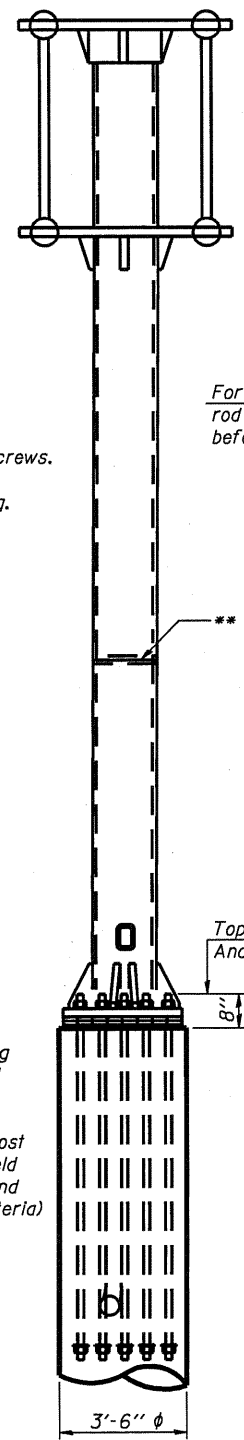
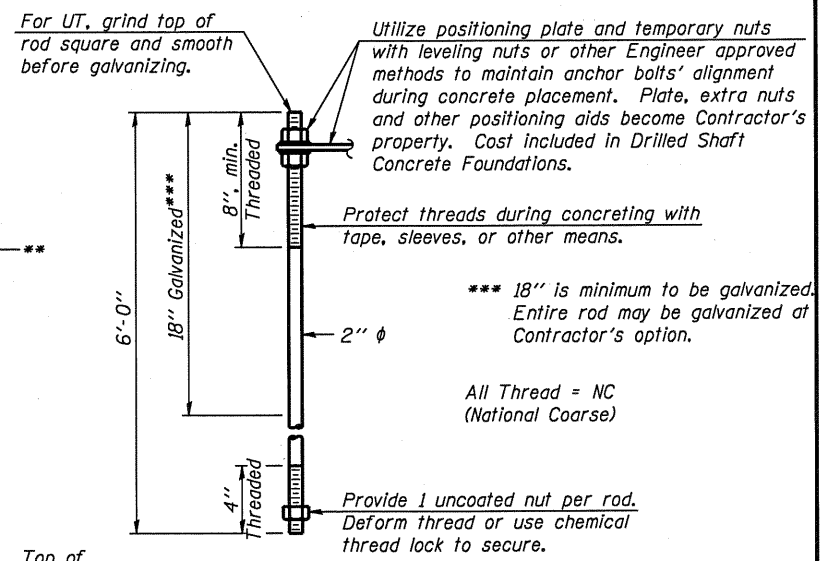
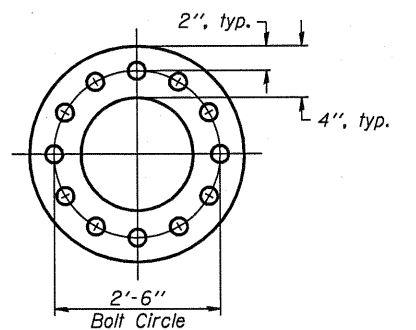


Provide 8" x 4 1/2" cover. Outside corners = 2 1/4" radius. Provide 4-5/16" φ holes in cover for 1/4" - 20 round head hot dip galvanized or stainless steel machine screws. (See cover details.)

- DETAIL A**
- * Bent bars may be butt welded top and bottom or bottom only. In lieu of fabricated handhole frame as shown, may cut from 2" plate (rolling direction vertical). All cut faces to be ground to ANSI Roughness of 500 min or less.
 - ** Butt welded joint in post is only allowed for post heights (H) over 20 ft. in length. If used, weld procedure must be preapproved by Engineer and joint shall receive 100% RT or UT (tension criteria) at Contractor's expense.



Structure Number	Station	H
3C0321080L118.7	1548+40	23'-9"
3C0381057R268.0	1442+55	23'-0"
3C0381057L269.3	1374+50	23'-0"

Note: "H" based on 15'-0" or actual sign height, whichever is greater.

OSC-A-5

7-1-10

FILE NAME *	USER NAME * woodshankr1	DESIGNED - RON WOODSHANK	REVISED -
ai:\pwork\pwork\woodshankr1\d02351241-6131-Details.dgn		DRAWN - RON WOODSHANK	REVISED -
PLOT SCALE = 100.0000' / IN.		CHECKED -	REVISED -
PLOT DATE = Sep 23, 2010 - 09:38:03 AM		DATE -	REVISED -

STATE OF ILLINOIS
DEPARTMENT OF TRANSPORTATION

CANTILEVER SIGN STRUCTURES - TYPE II-C-A & III-C-A
TRUSS SUPPORT POST - ALUMINUM TRUSS & STEEL POST
SCALE: SHEET NO. 4 OF 9 SHEETS STA. TO STA.

F.A.I. R.T.E. VAR	SECTION D-3 OVD SIN STR REPL 2011-08	COUNTY VAR	TOTAL SHEETS 25	SHEET NO. 19
			CONTRACT NO. 46131	
ILLINOIS				