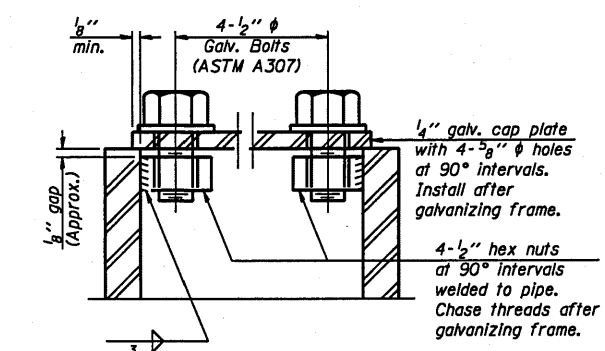
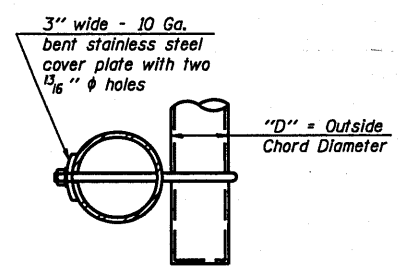


DETAIL A

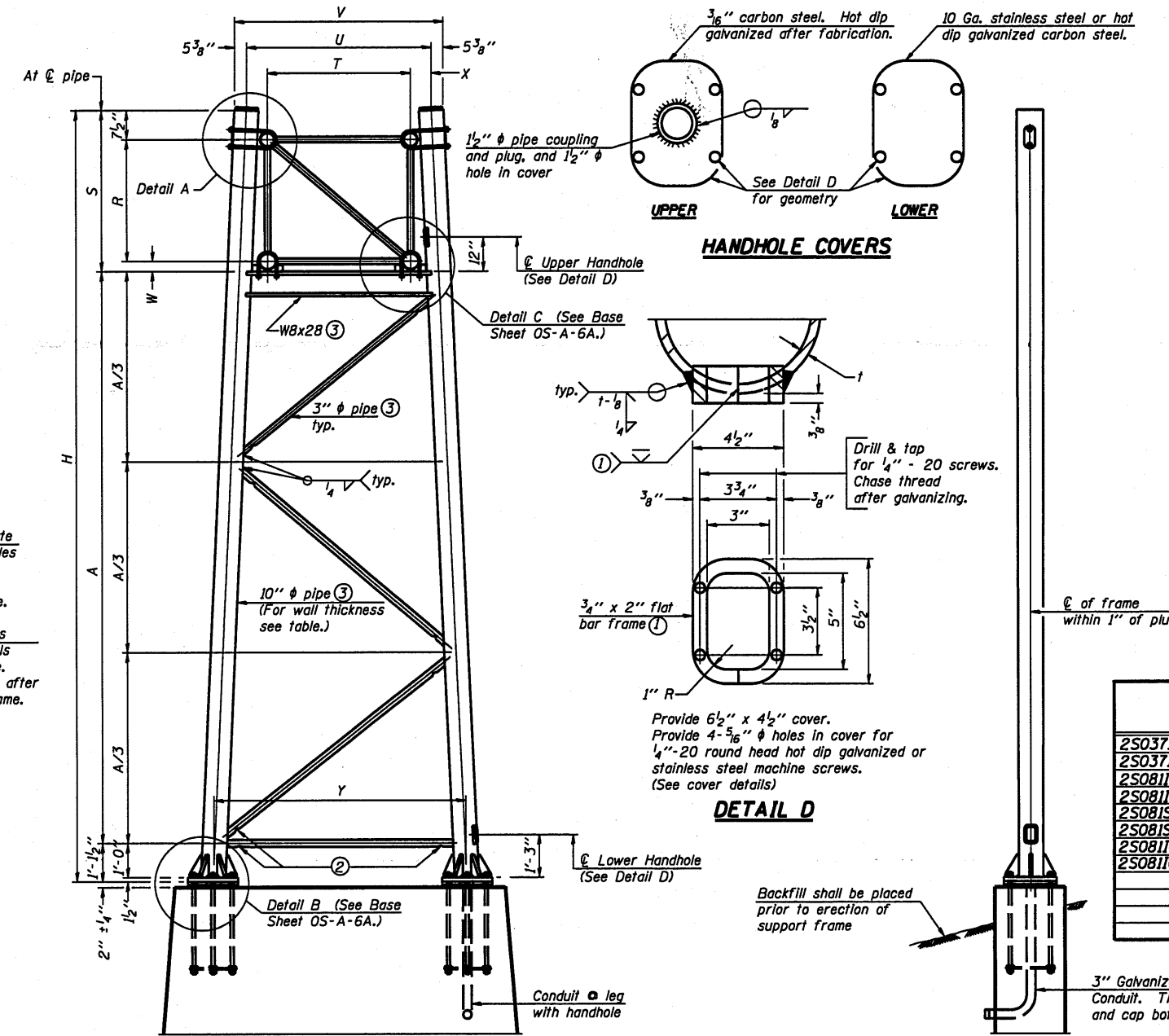


SECTION A-A

As an alternate to bolts, may use galvanized drive-fit caps installed after galvanizing frame.



SECTION B-B



SIDE ELEVATION

10" PIPE TRUSS SUPPORT FRAME

Truss Type	Dimensions							
	R	S	T	U	V	W	X	Y
I-A	4'-6"	5'-5 1/2"	4'-0"	5'-6"	6'-4 3/4"	4"	9"	8'-3"
II-A ⑤	5'-3"	6'-3 1/4"	4'-6"	6'-1"	6'-11 3/4"	4 3/4"	9 1/2"	8'-3"

Structure Number	Station	Support		Truss Type	Pipe Wall Thickness	H ⑥	A
		Left	Right				
2S0371080R007.9	453+16	X		I-A	0.279	29.00	22' 5"
2S0371080R007.9	453+16		X	I-A	0.279	29.00	22' 5"
2S0811088L017.3	323+16	X		I-A	0.279	29.00	22' 5"
2S0811088L017.3	323+16		X	I-A	0.279	29.00	22' 5"
2S081S092R026.0	517+21	X		II-A	0.365	29.00	21' 7 1/4"
2S081S092R026.0	517+21		X	II-A	0.365	29.00	21' 7 1/4"
2S0811074L001.3	296+21	X		I-A	0.279	24' 7"	18.00
2S0811074L001.3	296+21		X	I-A	0.279	29' 7"	23.00

Support Design Loads: See Base Sheet OS-A-1 for design and loading criteria.
Load combinations checked include deadload plus:
a) 100% wind normal to sign, 20% parallel to sign
b) 60% wind normal to sign, 30% parallel to sign

- In lieu of fabricated handhole frame as shown, may cut from 2" plate (rolling direction vertical). All cut faces to be ground to ANSI Roughness of 500 min or less.
- Galvanizing vent holes of adequate size shall be provided on underside at each end of bracing pipes. Alternately, holes may be provided in wall of pipe column. All vent holes shall be drilled and de-burred, typ.
- Steel pipe, plate, carbon steel handhole covers and rolled sections shall be hot dip galvanized after fabrication. Painting is not permitted. See Base Sheet OS-A-1.
- See General Notes for fasteners.
- Dimensions shown are based on selection criteria in the Sign Structures Manual. Nonstandard applications must have dimensions verified or amended as appropriate.
- "H" based on 15'-0" or actual sign height, whichever is greater.

For Foundation Details, see base sheet OS-F3 (Spread Footing) or OS4-F3 (Drilled Shaft).

Backfill shall be placed prior to erection of support frame

3" Galvanized Steel Conduit. Thread and cap both ends.

OS-A-6 12-1-08

FILE NAME =	USER NAME = jnkjd	DESIGNED -	REVISD -
DRABVISION TRUSS\CADD Plans\2011 contr...	12811 plans.dgn	DRAWN -	REVISD -
PLOT SCALE = 1/8" = 1'-0"		CHECKED -	REVISD -
PLOT DATE = Tue Aug 03 06:39:05 2010		DATE -	REVISD -

STATE OF ILLINOIS
DEPARTMENT OF TRANSPORTATION

DISTRICT 2 SIGN
STRUCTURE REPLACEMENT

F.A. RTE.	SECTION	COUNTY	TOTAL SHEET NO.
		VARIOUS	27 8
CONTRACT NO. 46132			
ILLINOIS FED. AID PROJECT			

SCALE: SHEET NO. OF SHEETS STA. TO STA.