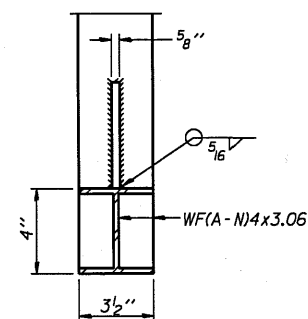
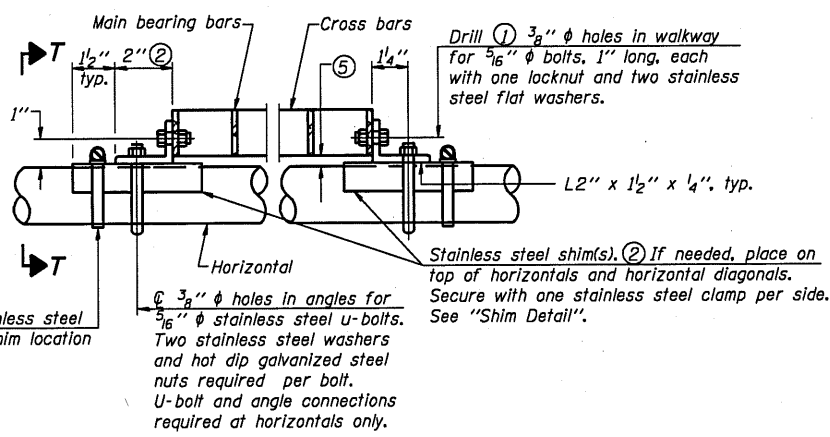


**SECTION B-B**  
Sign shall be even with the top of the bracket, but it may extend no more than 6" above the top of the bracket for field adjustments.

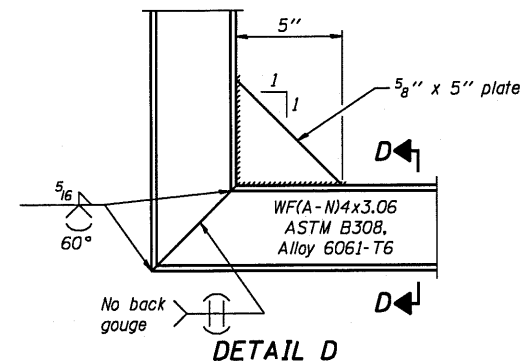


**SECTION D-D**  
Screw type stainless steel tube clamp at shim location

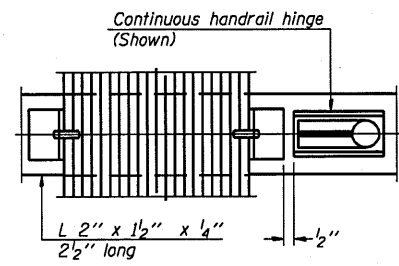


**DETAIL T**  
(Continuous Truss grating)

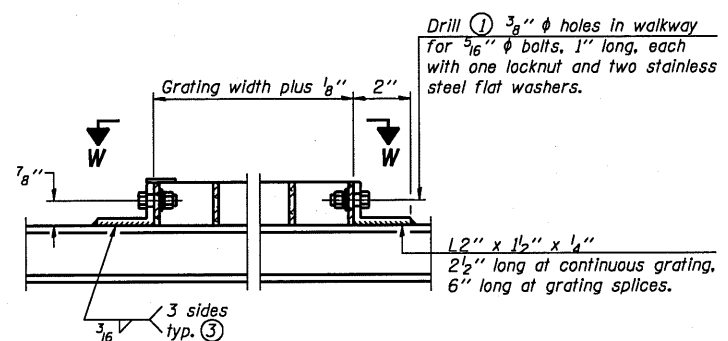
NUMBER	REVISION	DATE



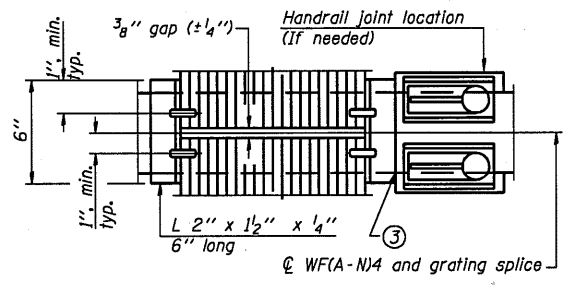
**DETAIL D**



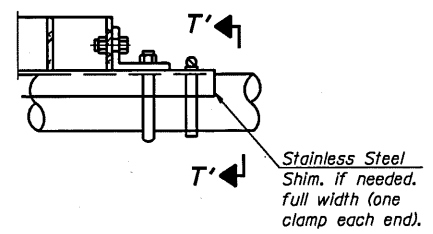
**(CONTINUOUS WALKWAY GRATING)**



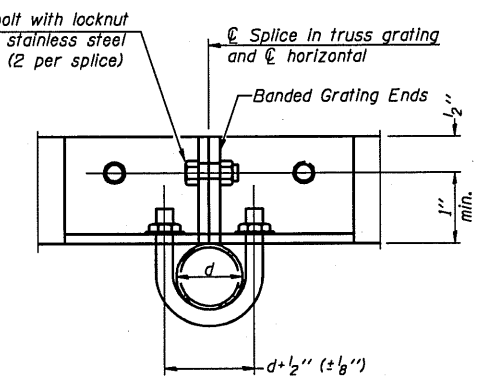
**DETAIL W**  
(Walkway grating)



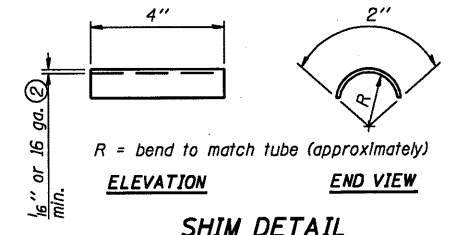
**SECTION W-W (AT WALKWAY GRATING SPLICE)**



**DETAIL T'**  
(Truss grating splice)  
Details not shown same as Detail T. Alternate materials may be used subject to the Engineer's review and approval.



**SECTION T'-T'**



**SPECIFICATIONS FOR STANDARD ALUMINUM GRATING**

Main Bearing Bars (MBB) shall be 3/16" x 1 1/2" on 1 3/16" centers and conform to ASTM B211 Alloy 6061-T6.  
Cross bars (CB) shall be 3/16" x 1 1/2" on 4" centers and conform to ASTM B221 Alloy 6063-T5 or 6061-T6.

OR

Aluminum Grating with modified "T" sections for main bearing bars shall meet the following requirements:  
Main bars shall conform to ASTM B221 Alloy 6061-T6 and have a minimum section modulus equal to 0.0705 in.<sup>3</sup> per bar, a depth of 1 1/2", spaced on 1 3/16" centers.  
Cross bars shall conform to ASTM B221 Alloy 6063-T5 or T-42 and spaced on 4" centers.

Structure Number	Station	A	⑥ B	C	⑥ D
2C081S092R028.8	376+96	7"	1' 6"	5' 6"	7' 6"
2C101S251R010.7	161+48	7"	1' 9"	5' 6"	7' 9"

**CANTILEVER SIGN STRUCTURES  
WALKWAY DETAILS  
ALUMINUM TRUSS & STEEL POST**