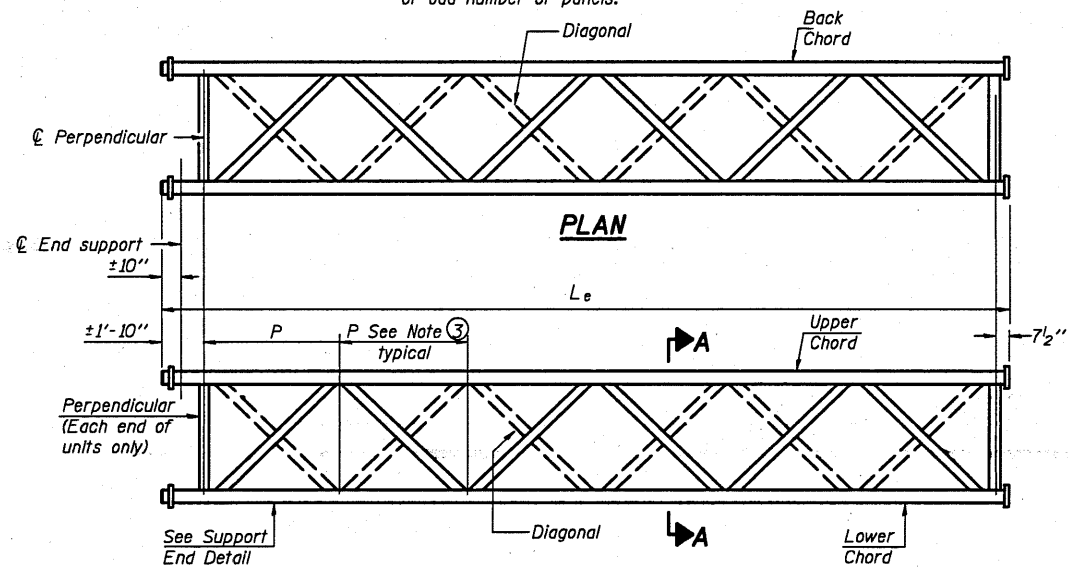


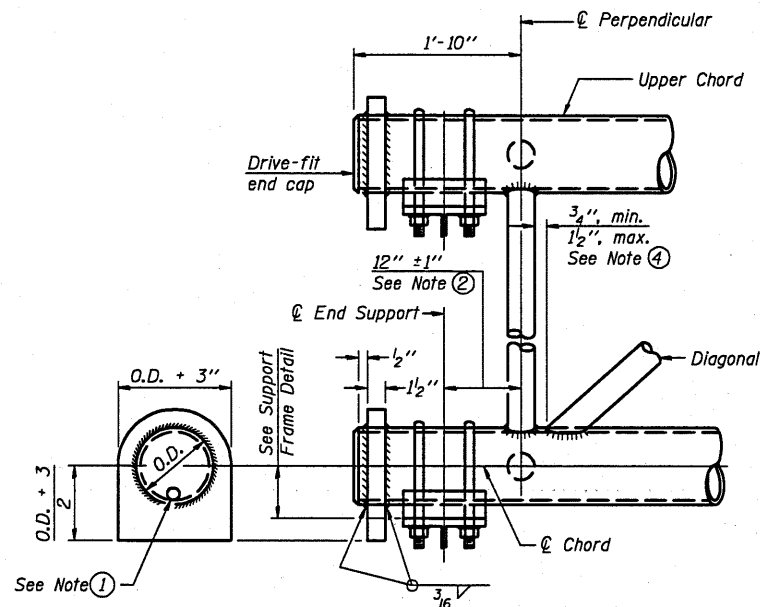
**ELEVATION  
TYPICAL INTERIOR UNIT**

Even number of panels/interior unit required.  
For two interior units, each unit may have even or odd number of panels.

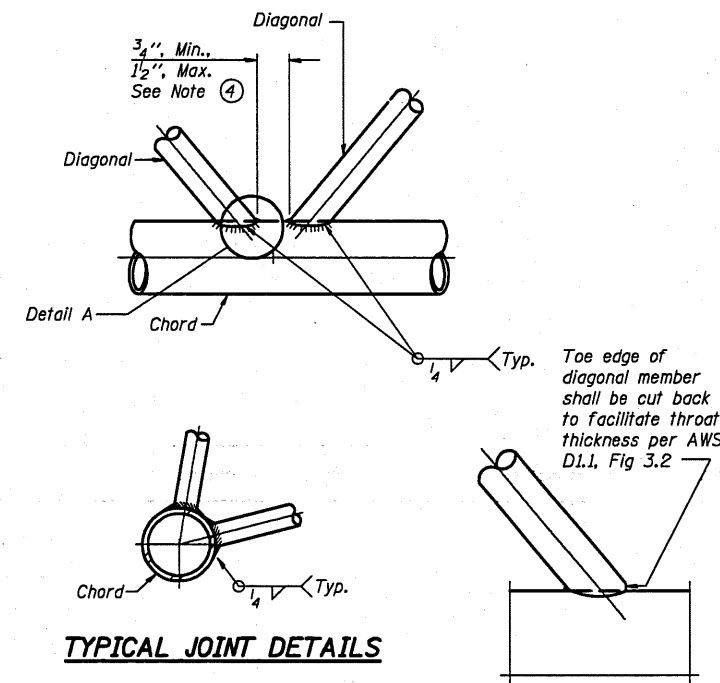


**ELEVATION  
TYPICAL EXTERIOR UNIT**

Even or odd number of panels/exterior unit allowed.



**SUPPORT END DETAIL FOR EXTERIOR UNIT**

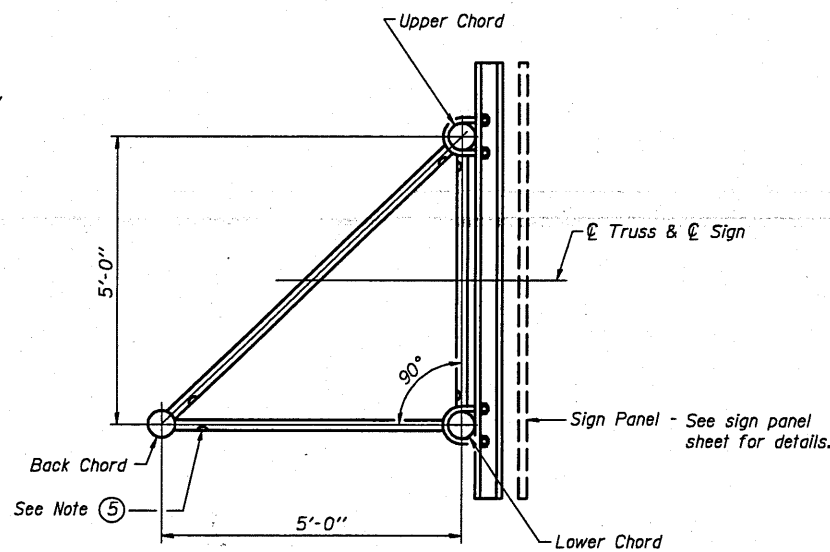


**TYPICAL JOINT DETAILS**

**DETAIL A**

**NOTES**

- ① Contractor must use standard drive-fit cap to close end. The drive-fit cap must have a 1/2"  $\phi$  drain hole and must be installed after galvanizing. (Typ. at non-splice ends of chords)
- ② 1'-10" end dimension may vary by  $\pm 1"$  to provide uniform panel spacing (P).
- ③ Panel spacing (P) shall be uniform for entire truss and between 4'-0" and 5'-0". (Fabricator may vary for uniform diagonals).
- ④ All diagonals shall be offset from the panel point based on the following: offset shall provide a 3/4" minimum to 1 1/2" maximum clearance between diagonal and any other diagonal, or perpendicular member, and to provide clearance for U-bolt connections of signs or walkway brackets.
- ⑤ Galvanizing vent holes of adequate size must be provided at each end of truss members except chords. Place on underside of sloping members and truss side of vertical members. Alternately, holes may be provided in wall of chords. All vent holes must be drilled and de-burred, typ.



**SECTION A-A**

TRI-S-2

7-1-10

FILE NAME =	USER NAME = buokias_jj	DESIGNED -	REVISED -
cr:\pwwork\pawidot\buokias_jj\d0212597\0546135-shd-Details.dgn		DRAWN -	REVISED -
		CHECKED -	REVISED -
		DATE -	REVISED -
PLT SCALE = 48.8988 / IN.			
PLT DATE = 7/28/2010			

STATE OF ILLINOIS  
DEPARTMENT OF TRANSPORTATION

TRI-CHORD SIGN STRUCTURES  
STEEL TRUSS DETAILS FOR TRUSS TYPES TRI-I-S, TRI-II-S, & TRI-III-S

SCALE: SHEET NO. OF SHEETS STA. TO STA.

F.A.I. RTE.	SECTION	COUNTY	TOTAL SHEETS	SHEET NO.
57&74	*	Champaign	37	23
D-5 OVD SIN STR REPL 2011-12			CONTRACT NO. 46135	
ILLINOIS FED. AID PROJECT				