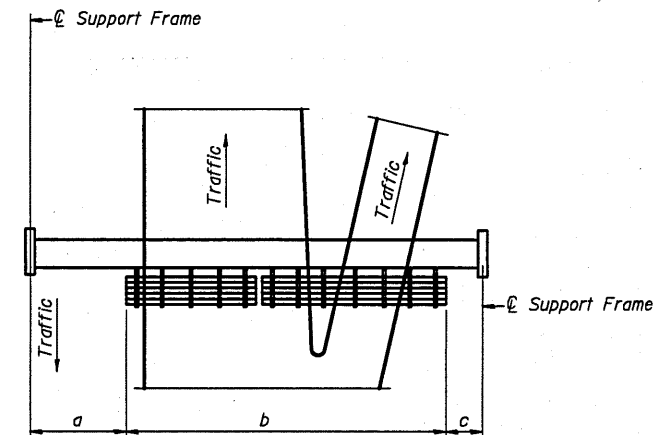
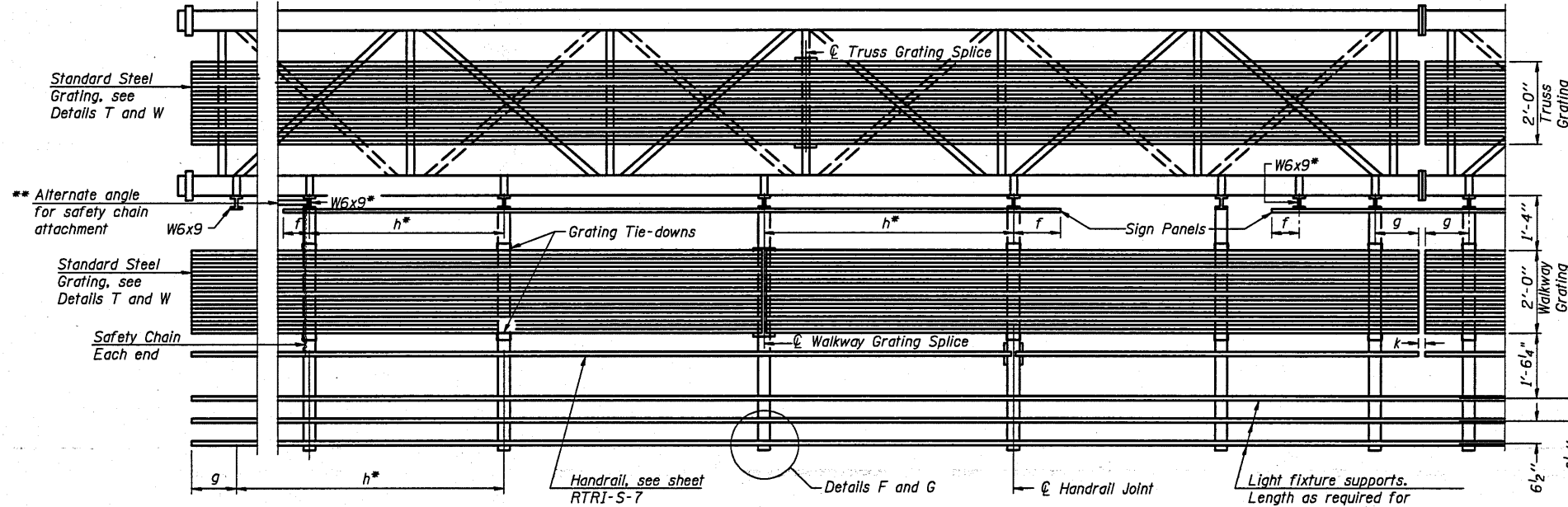


TYPICAL FRONT ELEVATION
 With lights and handrail omitted for clarity.
 For Section B-B, see Base Sheet RTRI-S-6.



PLAN WALKWAY AND HANDRAIL SKETCH
 (Road plan beneath truss varies)



SECTION A-A

Handrail and walkway shall span a minimum of three brackets between splices and/or gap joints.
 Place all sign and walkway brackets as close to panel points as practical.
 Handrail joint, grating and light support splices placed as needed.

Walkway Grating width dimensions is nominal and may vary $\pm 1/2$ " based on available standard widths.

BRACKET TABLE

W6x9		Number Brackets Required
Sign Width Greater Than	Sign Width Less Than or Equal To	
8'-0"	14'-0"	2
14'-0"	20'-0"	3
20'-0"	26'-0"	4
26'-0"	32'-0"	5
		6

- Notes:
- * Space W6x9 walkway brackets and sign brackets W6x9 for efficiency and within limits shown:
 - f = 12" maximum, 4" minimum (End of sign to ϕ of nearest bracket)
 - g = 12" maximum, 4" minimum (End of walkway grating to ϕ of nearest support bracket)
 - h = 6'-0" maximum (ϕ to ϕ sign and/or walkway support brackets, W6x9)
 - k = 2" maximum gap between adjacent walkway grating sections and handrail ends
 - ** If walkway bracket at safety chain location is behind sign, add angle to bracket, see Alternate Safety Chain Attachment on Base Sheet RTRI-S-7

For Details T and W, Section B-B and Grating Splice Details, see Base Sheet RTRI-S-6.
 For Handrail Details see Base Sheet RTRI-S-7.

Truss grating to facilitate shall run full length (center to center of support frames) ± 12 " on overhead trusses. Cost of truss grating is included in "Overhead Sign Structure".

NUMBER	REVISION	DATE

Structure Number	Station	a	b	c	Walkway Grating and Handrail Lengths
5 S 010 1074 R185.40	39+46	3'-0"	40'-0"	10'-0"	40'-0"
See also " Sign Truss Mounting Details " sheets 7&8					

TRI-S-6

12-1-08