

Center of horizontal to center of splice dimension may vary. Verify before drilling holes in mounting tube.

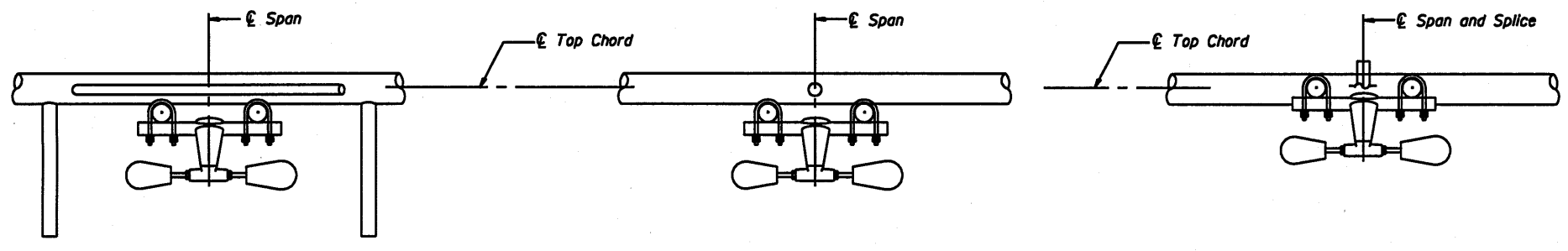
PLAN DETAIL "A"
Span between Panel Points

PLAN DETAIL "B"
Span at Panel Point

PLAN DETAIL "C"
Span at Chord Splice

NOTES

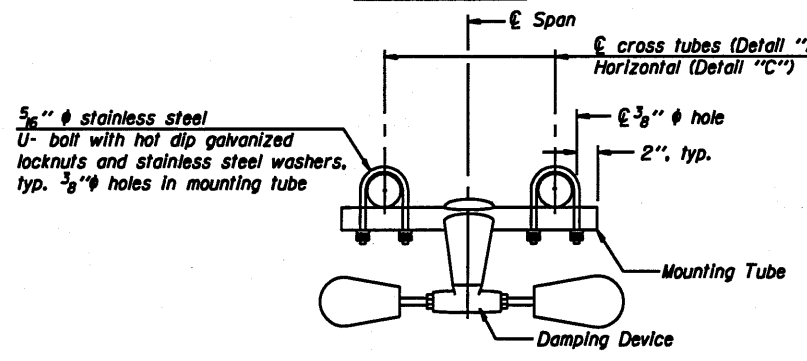
- Damper: One damper per truss. (31 lbs. minimum Stockbridge-Type Aluminum - 29" minimum between ends of weights) Cost included in Overhead Sign Structure...
- Materials: Materials: Aluminum tubes shall be ASTM B221 alloy 6061 temper T6. Cost included in Overhead Sign Structure...



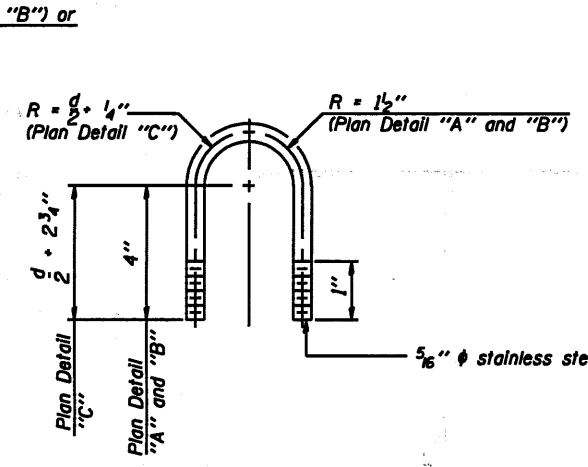
SECTION A-A

SECTION B-B

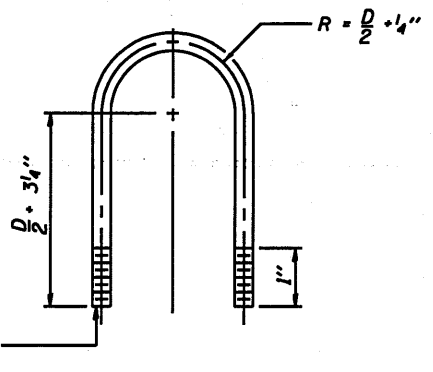
SECTION C-C



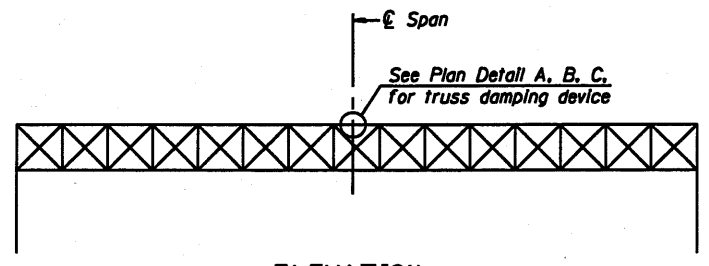
TRUSS DAMPING
DEVICE CONNECTION DETAIL
(Typical)



DAMPING DEVICE MOUNTING
TUBE U-BOLT DETAIL
(Typical)



TOP CHORD TO CROSS TUBE
U-BOLT DETAIL
(Typical - Detail "A" and "B")



ELEVATION
Aluminum Overhead
Sign Truss

OS-A-D

7-1-10

| | | | | | | | | | | | |
|------------|-----------|----------|-----------|---|---|---------------------|--------------------------|---------|--------------|-----------|--|
| FILE NAME | USER NAME | DESIGNED | REVISIONS | STATE OF ILLINOIS DEPARTMENT OF TRANSPORTATION | OVERHEAD SIGN STRUCTURE DAMPING DEVICE | F.A. RTE. | SECTION | COUNTY | TOTAL SHEETS | SHEET NO. | |
| | | CHECKED | REVISIONS | | | Var | 01 OVD SIN STR REPL11-30 | Various | 11 | 26 | |
| PLOT SCALE | | DRAWN | REVISIONS | | | SHEET NO. OF SHEETS | | | | | |
| PLOT DATE | | CHECKED | REVISIONS | | | CONTRACT NO. 46153 | | | | | |

ILLINOIS FED. AID PROJECT