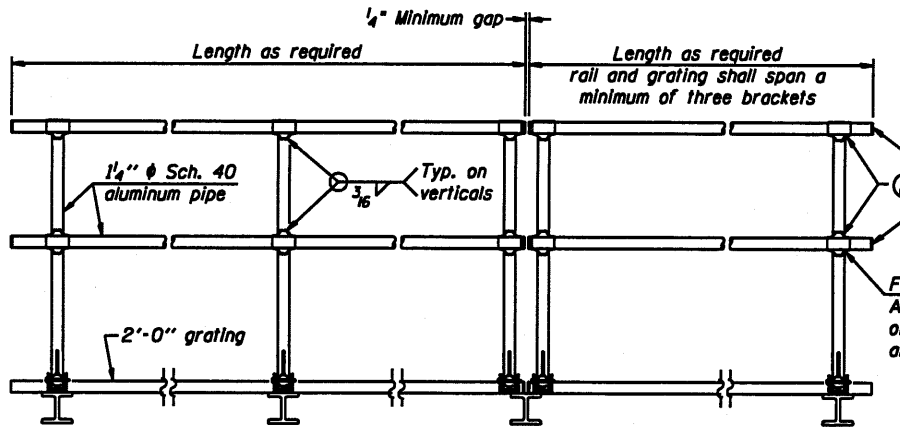


**SIDE ELEVATION**  
(Showing safety chain w/o sign)

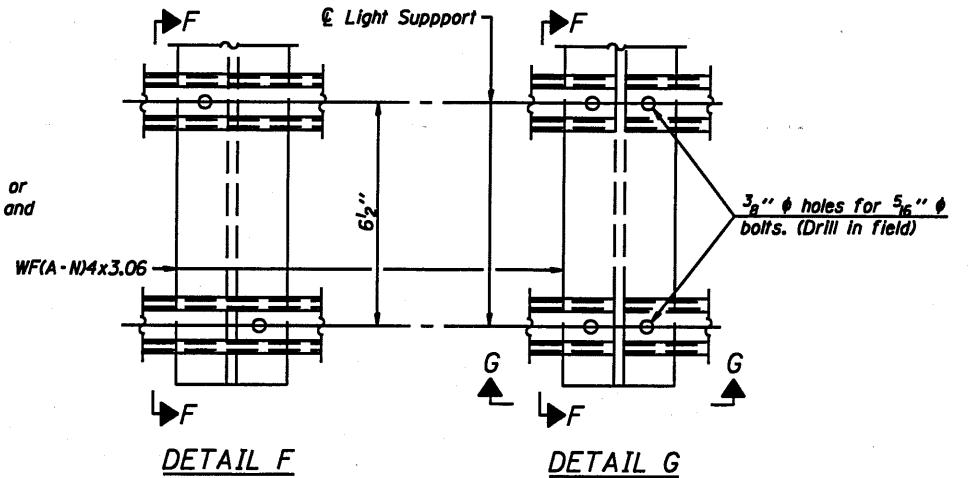


**FRONT ELEVATION**

**HANDRAIL DETAILS**

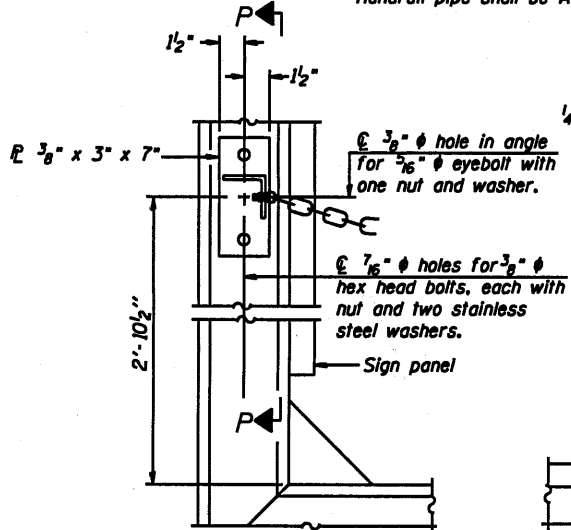
Handrail pipe shall be ASTM B241 or B429, Alloy 6063-T6 or Alloy 6061-T6.

- ① Install standard force-fit end caps or weld 1/8" end plates with 1/8" c.f.w. and grind smooth. (All rail ends)
- ② Horizontal handrail member shall be continuous thru fitting. Provide 7/16" hole in fitting for 3/8" bolt. Field drill 7/16" hole in horizontal rail member. Provide locknut and two stainless steel washers for bolt. (Use 3/8" eyebolts in 7/16" holes on top rail at ends only.)



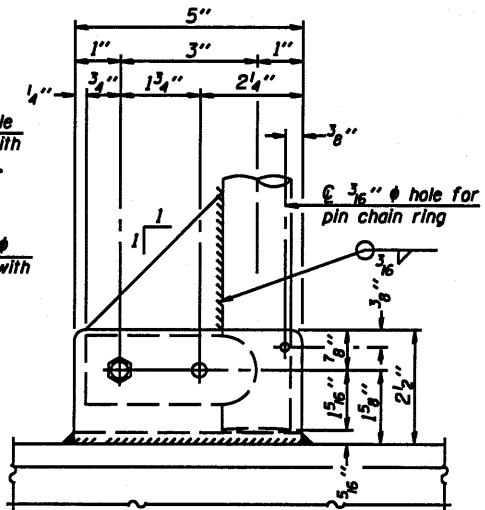
**DETAIL F**

**DETAIL G**

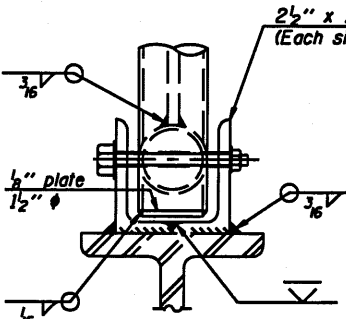


**ALTERNATE SAFETY CHAIN ATTACHMENT**  
(With Sign Present)

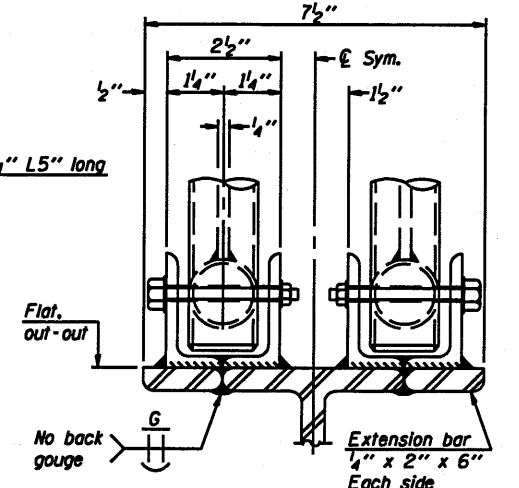
Items not shown same as "Side Elevation" of "Handrail Details"



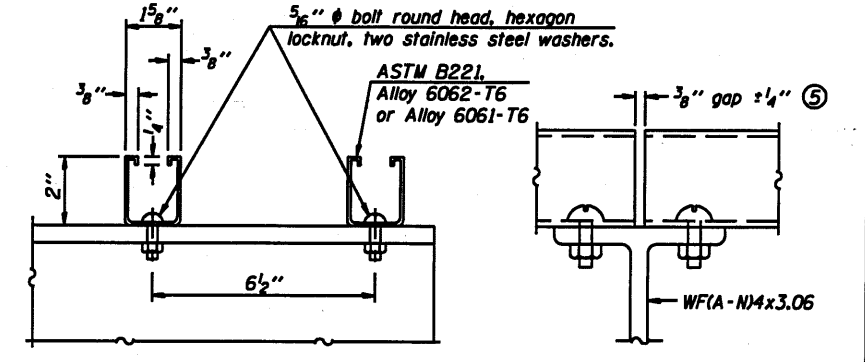
**SIDE ELEVATION**



**FRONT ELEVATION**  
See "Elevation" at right for dimensions.



**ELEVATION AT HANDRAIL JOINT** ④

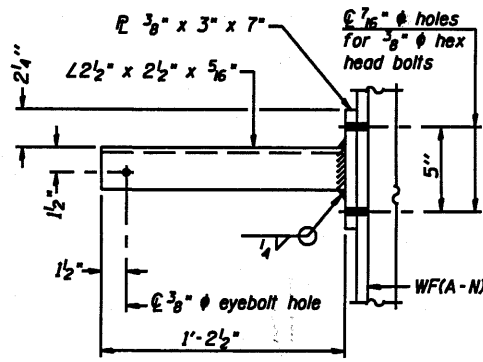


**SECTION F-F**

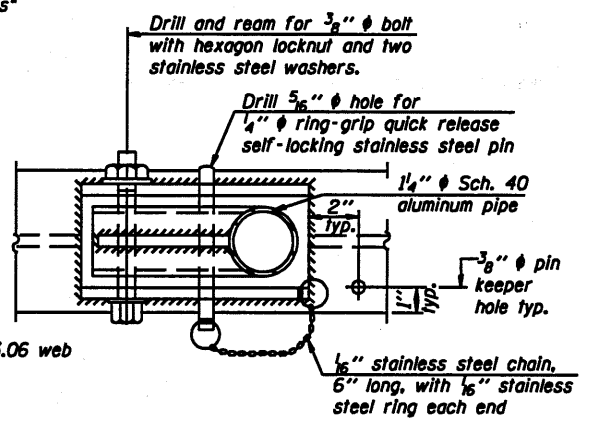
**SECTION G-G**

**LIGHTING FIXTURE MOUNTS (IF REQUIRED)**

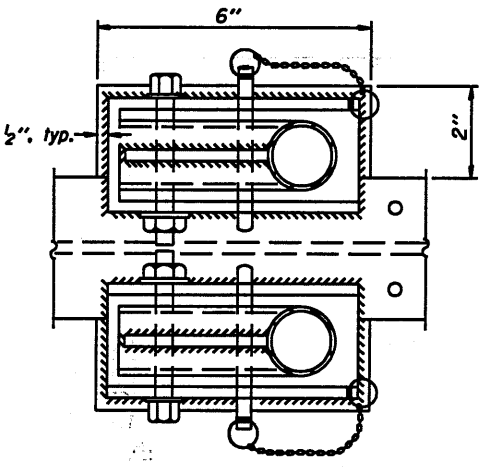
- ⑤ Field cut ends of light support channels shall be free of burrs or hazardous projections and coated with zinc-rich primer or equivalent.



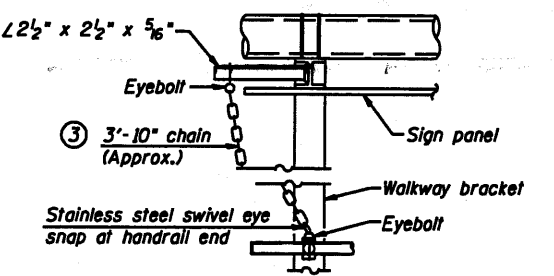
**SECTION P-P**



**PLAN**  
**DETAIL E HANDRAIL HINGE**

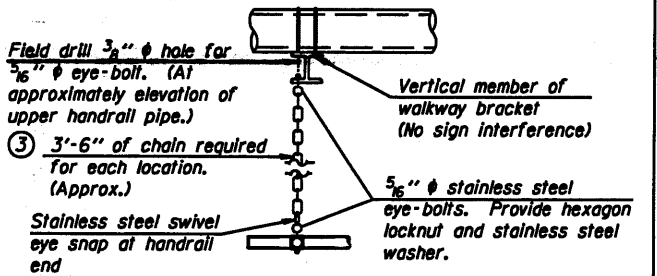


**PLAN AT HANDRAIL JOINT**  
Details not shown same as "PLAN"



**ALTERNATE SAFETY CHAIN ATTACHMENT**  
Details not shown similar to "Safety Chain" Details (Walkway omitted for clarity)

- ③ 3/16" Type 304L stainless steel chain, approximately 12 links per foot.
- ④ Extrusions may be used in lieu of the details shown, with approval of the Engineer.



**SAFETY CHAIN**  
One required for each end of each walkway.

OS-A-11	7-1-10	DESIGNED -	REVISIONS -	STATE OF ILLINOIS DEPARTMENT OF TRANSPORTATION	OVERHEAD SIGN STRUCTURES ALUMINUM HANDRAIL DETAILS	F.A. No.	SECTION	COUNTY	TOTAL SHEETS	SHEET NO.				
USER NAME	USER NAME	CHECKED -	REVISIONS -			Var	01	OV	SIN	STR	REPL11-30	Various	13	26
PLOT SCALE	PLOT DATE	DRAWN -	REVISIONS -			SHEET NO. ___ OF ___ SHEETS		CONTRACT NO. 46153						
		CHECKED -	REVISIONS -			ILLINOIS FED. AID PROJECT								