

F.A. RTE.	SECTION	COUNTY	TOTAL SHEETS	SHEET NO.
	2009-136 I	McHENRY	16	1
FED. ROAD DIST. NO. 1	ILLINOIS	CONTRACT NO. 60K02		
D-91-327-10			* - 3 = 13	

STATE OF ILLINOIS
DEPARTMENT OF TRANSPORTATION
DIVISION OF HIGHWAYS

PROPOSED HIGHWAY PLANS

ALGONQUIN BYPASS

SECTION: 2009-136 I

FAP ROUTE 860

ILLINOIS ROUTE 31 (N. JCT) TO ILLINOIS ROUTE 31 (S. JCT)
TOASTMASTER SITE - HAZARDOUS MATERIAL MITIGATION

McHENRY COUNTY
C-91-327-10



INDEX OF SHEETS

SHEET NO.	DESCRIPTION
1	COVER SHEET
2	GENERAL NOTES AND STATE STANDARDS
3	SUMMARY OF QUANTITIES
4	LOCATION PLAN
5A	REMOVAL PLAN
5A	BUILDING DEMOLITION & EROSION CONTROL PLAN
7-8	EROSION CONTROL AND NON-SPECIAL WASTE REMOVAL PLAN
9-10	LANDSCAPING AND SITE REMEDIATION PLAN
11	TRAFFIC CONTROL DETAIL
12-16	PLAT OF HIGHWAYS
* 6	DELETED
* 8	DELETED
* 10, 15	DELETED

PROJECT LOCATED IN VILLAGE OF ALGONQUIN

DESIGN DESIGNATION

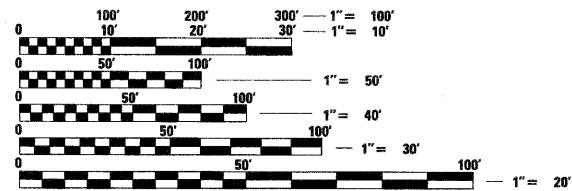
NA

TRAFFIC DATA

NA

DESCRIPTION OF PROJECT

EROSION CONTROL AND SITE REMEDIATION OF THE FORMER PRAIRIE OASIS, TOASTMASTER FACTORY, AND ALGONQUIN ROADHOUSE PROPERTIES LOCATED AT 315 RAILROAD STREET, 401 WASHINGTON STREET AND 440 EAST ALGONQUIN ROAD IN THE VILLAGE OF ALGONQUIN



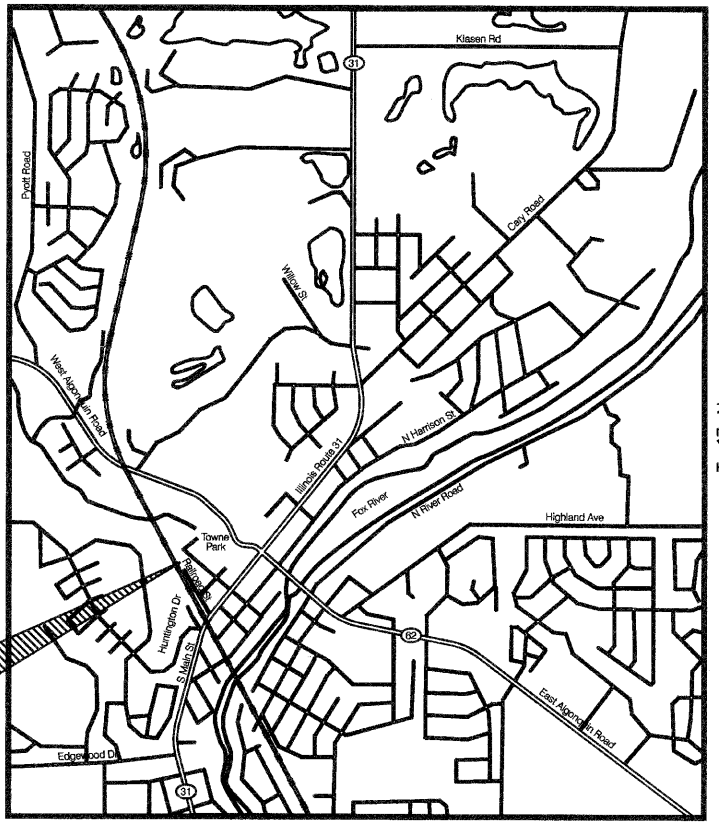
FULL SIZE PLANS HAVE BEEN PREPARED USING STANDARD ENGINEERING SCALES. REDUCED SIZED PLANS WILL NOT CONFORM TO STANDARD SCALES. IN MAKING MEASUREMENTS ON REDUCED PLANS, THE ABOVE SCALES MAY BE USED.

J.U.L.I.E.
JOINT UTILITY LOCATION INFORMATION FOR EXCAVATION
1-800-892-0123
OR 811

DISTRICT ONE - DESIGN
PROJECT MANAGER: ISAAC KWARTENG (847) 705-4230
PROJECT ENGINEER: ALIX BRICE (847) 705-4552

CONTRACT NO. 60K02

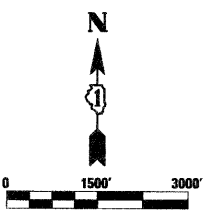
LOCATION MAP
R 8 E



PROJECT LOCATION

ALGONQUIN TOWNSHIP

PROJECT LENGTH:
ILLINOIS RTE 31 BYPASS - 3,683.69 FT. (0.70 MILES) (NET & GROSS)



STATE OF ILLINOIS
DEPARTMENT OF TRANSPORTATION
DIVISION OF HIGHWAYS

SUBMITTED May 12, 2010

Diana M. O'Keefe
DEPUTY DIRECTOR OF HIGHWAYS, REGION ONE ENGINEER

October 1, 2010
Scott E. Stitt, P.E.
acting ENGINEER OF DESIGN AND ENVIRONMENT

October 1, 2010
Christine M. Reed
DIRECTOR OF HIGHWAYS, CHIEF ENGINEER



Gary A. Blazek
REGISTERED P.E., STATE OF ILLINOIS
EXPIRES 11/30/2010

PLANS PREPARED BY:
CIVILTECH
450 E. Devon Ave, Suite 300 - Itasca, Illinois 60143
Tel: 630.773.3900 - Fax: 630.773.3975
www.civiltechinc.com


PRINTED BY THE AUTHORITY
OF THE STATE OF ILLINOIS

GENERAL NOTES

1. ALL CONSTRUCTION SHALL BE IN ACCORDANCE WITH THE "STANDARD SPECIFICATIONS FOR ROAD AND BRIDGE CONSTRUCTION" ("STANDARD SPECIFICATIONS"), ADOPTED JANUARY 1, 2007; THE "SUPPLEMENTAL SPECIFICATIONS AND RECURRING SPECIAL PROVISIONS" ADOPTED JANUARY 1, 2010; THE LATEST EDITION OF THE "ILLINOIS MANUAL ON UNIFORM TRAFFIC CONTROL DEVICES FOR STREETS AND HIGHWAYS", (IMUTCD; "THE STANDARD SPECIFICATIONS FOR WATER AND SEWER MAIN CONSTRUCTION IN ILLINOIS" MAY 1996 FIFTH EDITION, VILLAGE OF ALGONQUIN REQUIREMENTS. THE DETAILS IN THE PLANS, AND THE SPECIAL PROVISIONS AND IDOT STANDARD DRAWINGS INCLUDED IN THE CONTRACT DOCUMENTS.
2. HORIZONTAL CONTROL IS HARN (HPGN) ILLINOIS STATE PLANES EAST ZONE, US FOOT. VERTICAL CONTROL IS NAVD 88.
3. BEFORE STARTING ANY EXCAVATION, THE CONTRACTOR SHALL CALL "JULIE" AT (800) 892-0123 OR 811, MCHENRY COUNTY, AND THE VILLAGE OF ALGONQUIN, FOR FIELD LOCATIONS OF BURIED UTILITIES (48 HOURS NOTIFICATION REQUIRED).
4. THE CONTRACTOR SHALL COORDINATE CONSTRUCTION ACTIVITIES WITH UTILITY COMPANIES AND GOVERNMENT AGENCIES.
5. THE CONTRACTOR WILL NOT BE ALLOWED TO SET UP A YARD OR FIELD OFFICE ON STATE PROPERTY WITHOUT WRITTEN CONCENT FROM THE DEPARTMENT.
6. WHEN ARTIFICIAL LIGHTING IS UTILIZED IN NIGHT OPERATIONS, THE CONTRACTOR SHALL EXERCISE THE UTMOST PRECAUTIONS PREVENTING ADVERSE VISIBILITY TO THE MOTORING PUBLIC AND ADJOINING RESIDENTIAL AREAS.
7. FULL-DEPTH SAW CUTS SHALL BE USED TO REMOVE EXISTING PAVEMENT AND APPERTUNANCES FROM MATERIAL TO REMAIN IN ACCORDANCE WITH SECTION 440. THE COST OF THE FULL-DEPTH SAWING SHALL BE INCLUDED IN THE COST OF THE ITEM BEING REMOVED.
8. NO ADDITIONAL COMPENSATION WILL BE MADE FOR REMOVAL OF STUMPS OR TREE ROOTS THAT ARE IN CONFLICT WITH THE PROPOSED IMPROVEMENTS.
9. IT SHALL BE THE CONTRACTOR'S RESPONSIBILITY TO VERIFY ALL DIMENSIONS AND CONDITIONS EXISTING IN THE FIELD PRIOR TO ORDERING MATERIALS AND BEGINNING CONSTRUCTION.
10. ALL EROSION CONTROL MEASURES SHALL BE IN ACCORDANCE WITH THE PROCEDURES AND STANDARDS FOR URBAN SOIL EROSION AND SEDIMENTATION CONTROL.
11. SOIL DISTURBANCE SHALL BE CONDUCTED IN SUCH A MANNER AS TO MINIMIZE EROSION. SOIL STABILIZATION MEASURES SHALL CONSIDER THE TIME OF YEAR, SITE CONDITIONS, AND THE USE OF TEMPORARY OR PERMANENT MEASURES.
12. SOIL EROSION AND SEDIMENTATION CONTROL FEATURES SHALL BE CONSTRUCTED PRIOR TO THE COMMENCEMENT OF UPLAND DISTURBANCE.
13. TEMPORARY SOIL STABILIZATION SHALL BE APPLIED TO DISTURBED AREAS WITHIN 7 CALENDAR DAYS OF THE END OF THE ACTIVE HYDROLIC DISTURBANCE. PERMANENT STABILIZATION SHALL BE DONE WITHIN 7 DAYS AFTER COMPLETION OF THE FINAL GRADING OF THE SOIL.
14. ALL STORM SEWER FACILITIES THAT ARE OR WILL BE FUNCTIONING DURING CONSTRUCTION SHALL BE PROTECTED, FILTERED, OR OTHERWISE TREATED TO REMOVE SEDIMENT.
15. ALL TEMPORARY AND PERMANENT EROSION CONTROL MEASURES MUST BE MAINTAINED AND REPAIRED AS NEEDED.
16. THE EROSION CONTROL MEASURES INDICATED ON THE PLANS ARE THE MINIMUM REQUIREMENTS. ADDITIONAL MEASURES MAY BE REQUIRED, AS DIRECTED BY THE ENGINEER OR GOVERNING AGENCY.

GENERAL NOTES (CONTINUED)

17. WHERE SECTION OR SUBSECTION MONUMENTS ARE ENCOUNTERED, THE ENGINEER SHALL BE NOTIFIED BEFORE SUCH MONUMENTS ARE REMOVED. THE CONTRACTOR SHALL CAREFULLY PRESERVE ALL PROPERTY MARKERS AND MONUMENTS UNTIL THE OWNER, AN AUTHORIZED SURVEYOR OR AGENT HAS WITNESSED OR OTHERWISE REFERENCED EACH LOCATION. THE CONTRACTOR SHALL RESET ALL SURVEY MARKERS, CONTROL POINTS AND TIES DISTURBED DURING CONSTRUCTION. THIS WORK SHALL BE PAID FOR AS "PERMANENT SURVEY MARKERS, TYPE II".
18. PAY ITEMS IN THE SUMMARY OF QUANTITIES HAVE BEEN ESTIMATED. IF, IN THE ENGINEER'S OPINION, THE WORK IS NOT REQUIRED, THE ITEM WILL BE DEDUCTED FROM THE CONTRACT AND NO ADDITIONAL COMPENSATION WILL BE ALLOWED.
19. THE RESIDENT ENGINEER SHALL CONTACT THE TRAFFIC CONTROL SUPERVISOR AT (847) 705-4470 A MINIMUM OF 72 HOURS PRIOR TO THE PLACEMENT OF ANY TEMPORARY TRAFFIC CONTROL DEVICES.
20. THE CONTRACTOR SHALL CONTACT THE ALGONQUIN PUBLIC WORKS DEPARTMENT AT (847) 658-2754 FOR WATER SERVICE AND SANITARY SEWER LATERAL DISCONNECTION REQUIREMENTS.
21. ALL TRAFFIC CONTROL SHALL BE INCIDENTAL TO THIS CONTRACT.
22. EXISTING HYDRANTS ON THE SITE SHALL BE SALVAGED TO THE VILLAGE OF ALGONQUIN.

23. THE CONTRACTOR IS RESPONSIBLE FOR OBTAINING A DEMOLITION PERMIT FROM THE VILLAGE OF ALGONQUIN. 

LIST OF ILLINOIS DOT HIGHWAY STANDARDS

000001-05	STANDARD SYMBOLS, ABBREVIATIONS & PATTERNS
280001-05	TEMPORARY EROSION CONTROL SYSTEMS
664001-02	CHAIN LINK FENCE
667101-01	PERMANENT SURVEY MARKERS
701106-02	OFF-RD OPERATIONS, MULTILANE, MORE THAN 15' AWAY
701801-04	LANE CLOSURE MULTI LANE 1W 2W WITH CROSSWALK OR SIDEWALK CLOSURE
701901-01	TRAFFIC CONTROL DEVICES
720001-01	SIGN PANEL MOUNTING DETAILS
720011-01	METAL POSTS FOR SIGNS, MARKERS AND DELINEATORS

FILE NAME =	USER NAME = ctb	DESIGNED - CTB	REVISED -	STATE OF ILLINOIS DEPARTMENT OF TRANSPORTATION	GENERAL NOTES STATE STANDARDS	F.A. RTE.	SECTION	COUNTY	TOTAL SHEETS	SHEET NO.	
...N160K02-shr-gennote-01.dgn		DRAWN - CTB	REVISED -				2009-136 I	MCHENRY	16	2	
		CHECKED - GAB	REVISED -			CONTRACT NO. 60K02					
		DATE -	REVISED -			SCALE: NONE	SHEET NO. 1 OF 1 SHEETS	STA.	TO STA.	FED. ROAD DIST. NO. 1 ILLINOIS FED. AID PROJECT	

Rev. 10-25-10

CODE NO.	PAY ITEM	UNIT	TOTAL	CONSTRUCTION TYPE CODE
				0020
20100110	TREE REMOVAL (6 TO 15 UNITS DIAMETER)	UNIT	135	135
20100210	TREE REMOVAL (OVER 15 UNITS DIAMETER)	UNIT	400	400
20400800	FURNISHED EXCAVATION	CU YD	58,000	58,000
21101615	TOPSOIL FURNISH AND PLACE, 4"	SQ YD	30,000	30,000
25000200	SEEDING, CLASS 2	ACRE	6.6	6.6
25000400	NITROGEN FERTILIZER NUTRIENT	POUND	600	600
25000500	PHOSPHORUS FERTILIZER NUTRIENT	POUND	600	600
25000600	POTASSIUM FERTILIZER NUTRIENT	POUND	600	600
25100105	MULCH, METHOD 1	ACRE	6.6	6.6
44000100	PAVEMENT REMOVAL	SQ YD	12,530	12,530
44000300	CURB REMOVAL	FOOT	480	480
44000600	SIDEWALK REMOVAL	SQ FT	9,870	9,870
50102400	CONCRETE REMOVAL	CU YD	200	200
X0323099	RETAINING WALL REMOVAL	CU YD	15	15
Z0007126	HANDRAIL REMOVAL	FOOT	96	96
56400500	FIRE HYDRANTS TO BE REMOVED	EACH	3	3
56500700	DOMESTIC WATER SERVICE BOXES TO BE REMOVED	EACH	2	2
60500040	REMOVING MANHOLES	EACH	2	2
60500050	REMOVING CATCH BASINS	EACH	4	4
66410300	CHAIN LINK FENCE REMOVAL	FOOT	3,350	3,350
66410800	CHAIN LINK GATES REMOVAL	EACH	2	2
66700305	PERMANENT SURVEY MARKERS, TYPE II	EACH	1	1
66900105	UNDERGROUND STORAGE TANK REMOVAL	EACH	3	3

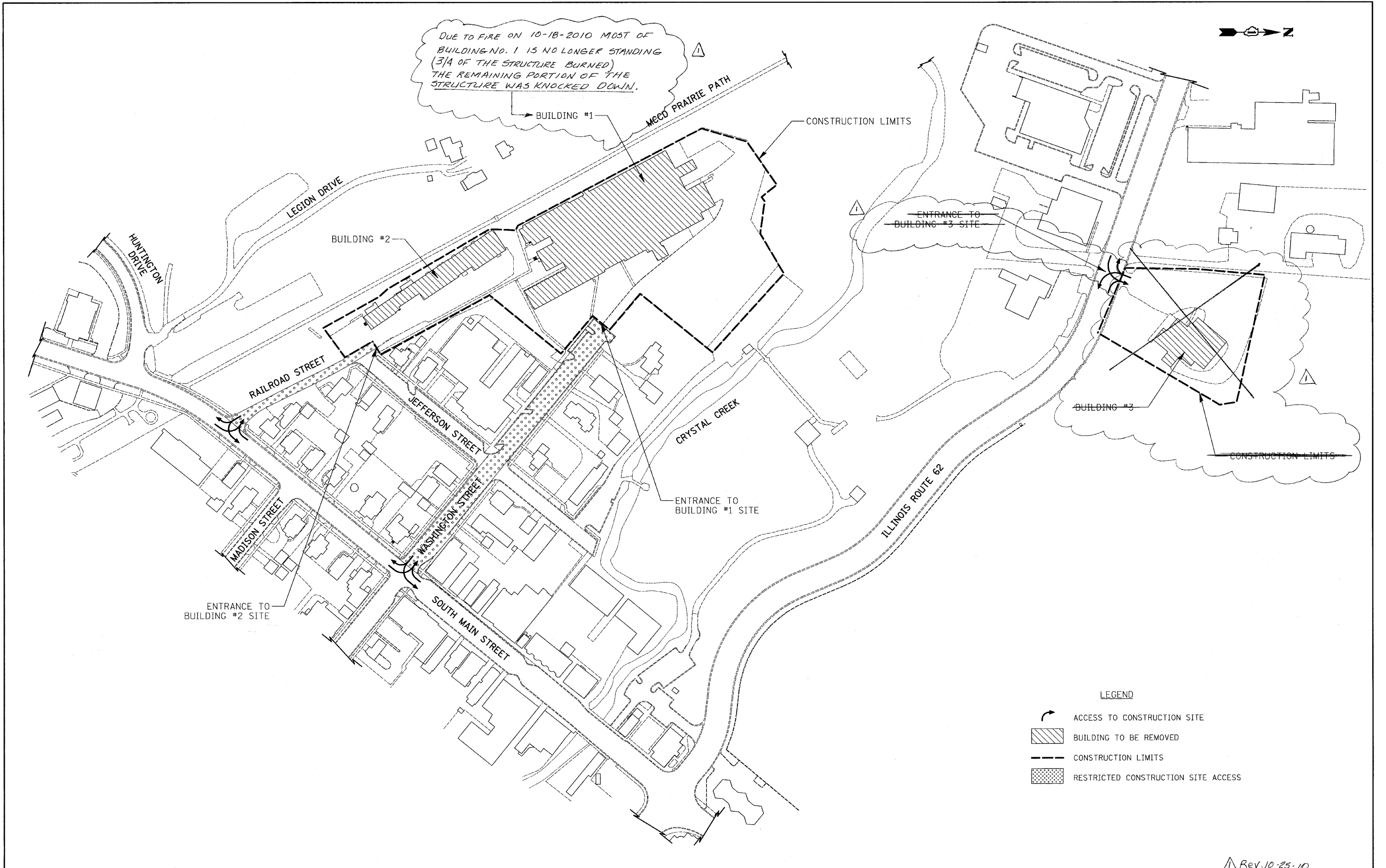
25100630	EROSION CONTRL BLANKET	SQ YD	10,380	10,380
28000250	TEMPORARY EROSION CONTROL SEEDING	POUND	220	220
28000400	PERIMETER EROSION BARRIER	FOOT	1,915	1,915
28000510	INLET FILTERS	EACH	10	10
66400305	CHAIN LINK FENCE, 6'	FOOT	945	945
66408200	CHAIN LINK GATES, 6' X 24' DOUBLE	EACH	1	1
Z0007601	BUILDING REMOVAL NO. 1	L SUM	1	1
Z0007602	BUILDING REMOVAL NO. 2	L SUM	1	1

CODE NO.	PAY ITEM	UNIT	TOTAL	CONSTRUCTION TYPE CODE
				0020
66900200	NON-SPECIAL WASTE DISPOSAL	CU YD	29,550	29,550
66900400	SPECIAL WASTE GROUNDWATER DISPOSAL	GALLON	50,000	50,000
66900450	SPECIAL WASTE PLAN AND REPORT	L SUM	1	1
66900530	SOIL DISPOSAL ANALYSIS	EACH	2	2
67000400	ENGINEER'S FIELD OFFICE, TYPE A	CAL MO	12	12
67100100	MOBILIZATION	L SUM	1	1
67201100	SEALING ABANDONED MONITORING WELLS	EACH	29	29
70102640	TRAFFIC CONTROL AND PROTECTION, STANDARD 701801	L SUM	1	1
84200600	REMOVAL OF LIGHTING UNIT, NO SALVAGE	EACH	1	1
Z0019600	DUST CONTROL WATERING	UNIT	300	300
Z0048900	RAILROAD TRACK REMOVAL	FOOT	130	130
Z0075505	TIMBER RETAINING WALL REMOVAL	FOOT	293	293
XX004878	MAINTENANCE OF TEMPORARY EROSION CONTROL SYSTEMS	L SUM	1	1
XX007562	SIGN REMOVAL, SPECIAL	L SUM	1	1
X0327081	WATER SERVICE LINE REMOVAL	FOOT	790	790
X0301339	REMOVE EXISTING PARKING BLOCKS	EACH	6	6
X0322329	TIMBER CURB REMOVAL	FOOT	190	190
Z0013797	STABILIZED CONSTRUCTION ENTRANCE	SQ YD	550	550
X0324056	REMOVAL OF EXISTING WOOD BOLLARDS	EACH	24	24
X0840000	SANITARY SEWER REMOVAL, 8"	FOOT	340	340
X7240300	SIGN REMOVAL	EACH	5	5
X5510100	STORM SEWER REMOVAL	FOOT	400	400
X0327070	REMOVE EXISTING FLAG POLE	EACH	1	1
X0327071	REMOVE EXISTING STEEL DRUM	EACH	4	4

● INDICATES SPECIALTY ITEMS

FILE NAME = ... \D168K02-sht-summary-01.dgn	USER NAME = ctb	DESIGNED - CTB	REVISED -	STATE OF ILLINOIS DEPARTMENT OF TRANSPORTATION	SUMMARY OF QUANTITIES			F.A. RTE.	SECTION	COUNTY	TOTAL SHEETS	SHEET NO.
	PLOT SCALE = 1:8000' / IN.	CHECKED - GAB	REVISED -		SCALE: NONE	SHEET NO. 1 OF 1 SHEETS	STA.	TO STA.	2009-136 I	McHENRY	16	3
	PLOT DATE = 5/12/2010	DATE -	REVISED -		CONTRACT NO. 60K02							
								FED. ROAD DIST. NO. 1 ILLINOIS FED. AID PROJECT				

Rev. 10-25-10



- LEGEND**
- ACCESS TO CONSTRUCTION SITE
 - BUILDING TO BE REMOVED
 - CONSTRUCTION LIMITS
 - RESTRICTED CONSTRUCTION SITE ACCESS

FILE NAME = ... \D160K02-sht-100-01.dgn	USER NAME = ctb	DESIGNED - CTB	REVISED - -
		DRAWN - CDC	REVISED - -
		CHECKED - GAB	REVISED - -
		DATE - 5/11/2010	REVISED - -

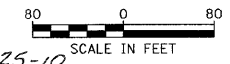
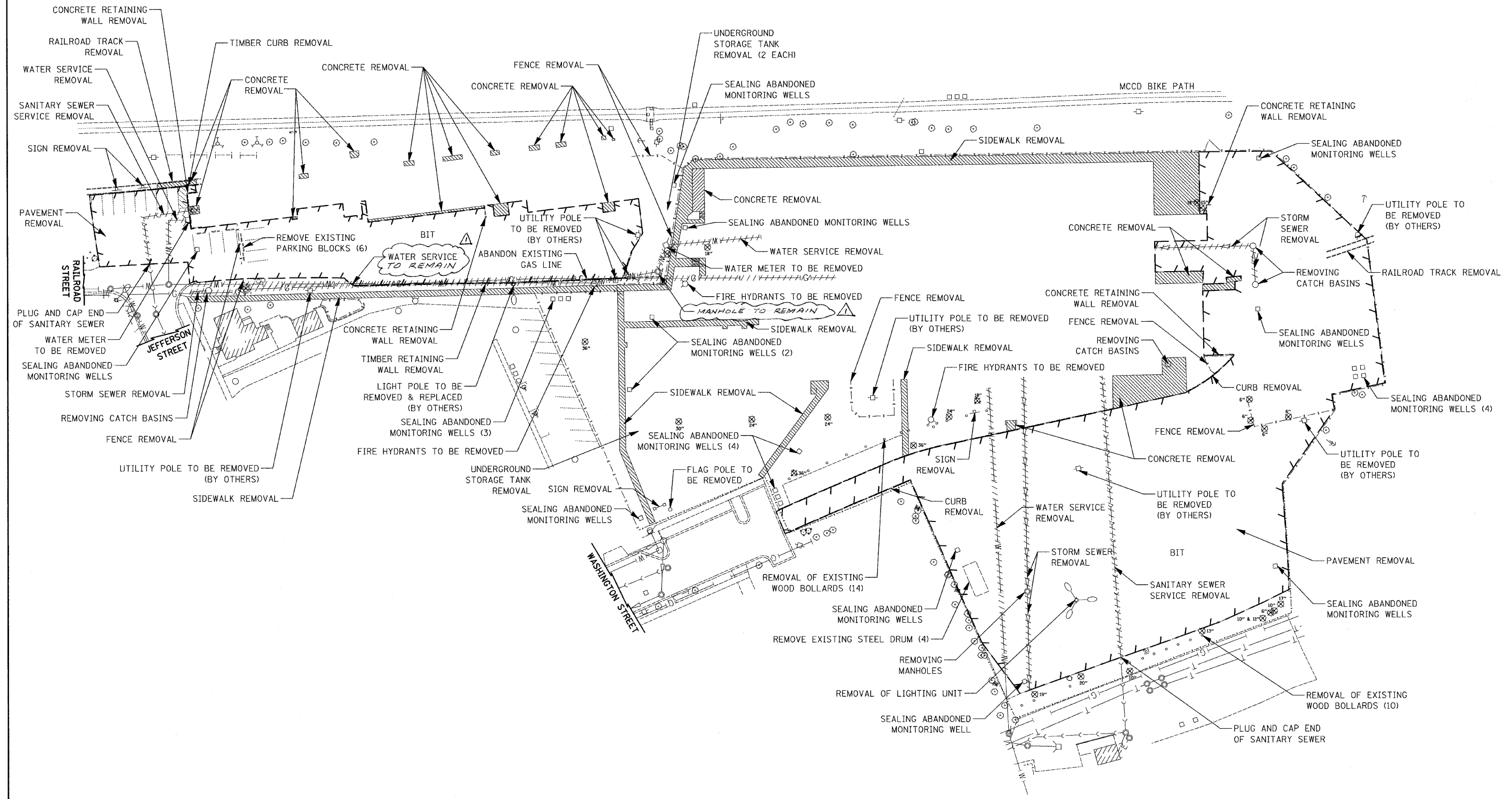
STATE OF ILLINOIS
DEPARTMENT OF TRANSPORTATION

LOCATION PLAN

SCALE: 1" = 200'	SHEET NO. 1 OF 1 SHEETS	STA.	TO STA.
------------------	-------------------------	------	---------

Rev. 10-25-10

F.A. RTE.	SECTION	COUNTY	TOTAL SHEETS	SHEET NO.
	2009-136 I	MCHENRY	16	4
CONTRACT NO. 60K02				
FED. ROAD DIST. NO. 1 [ILLINOIS] FED. AID PROJECT				



Rev. 10-25-10

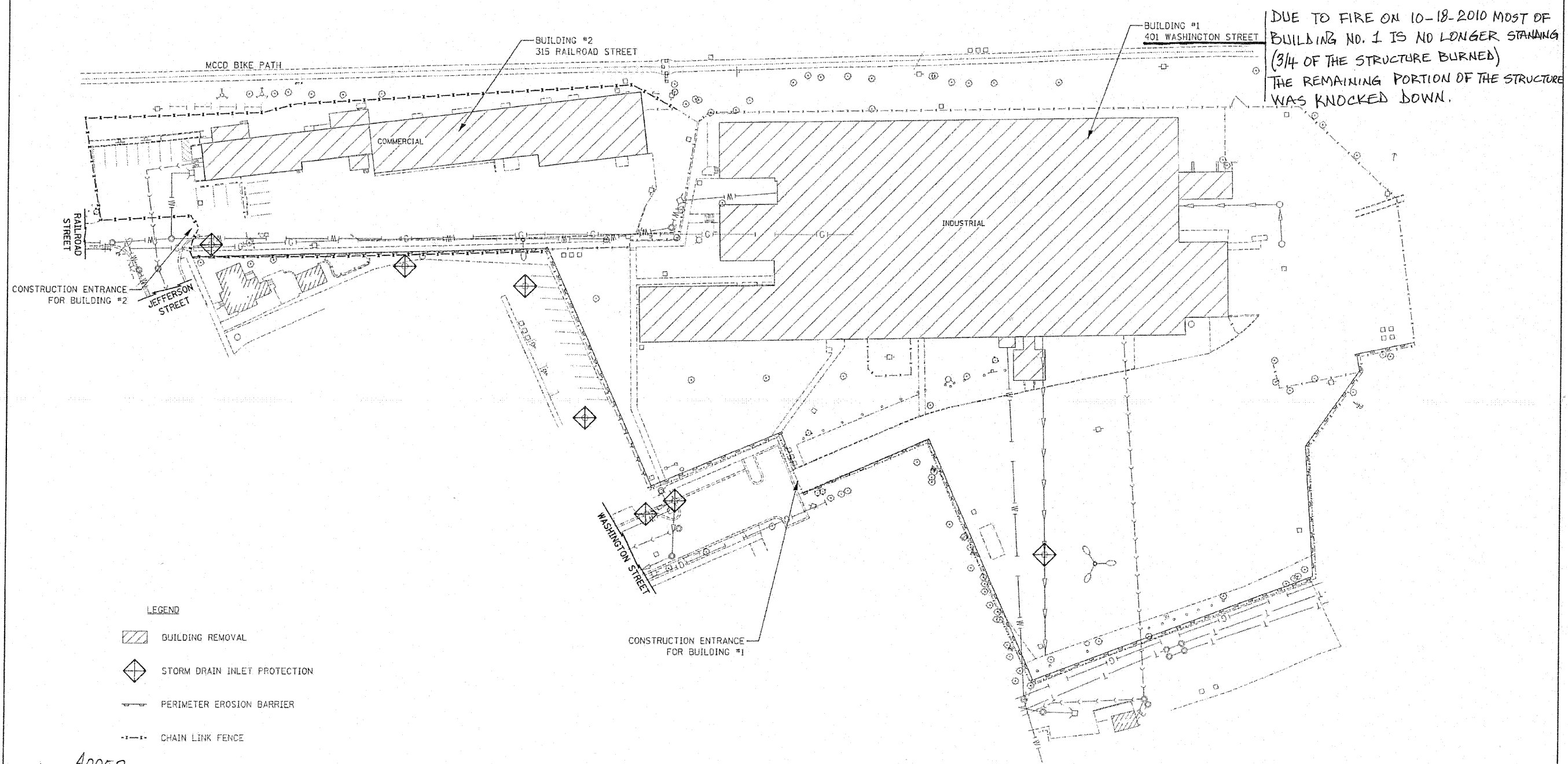
FILE NAME =	USER NAME =	DESIGNED -	REVISED -
...ND160K02-sht-rem-01.dgn	ctb	CTB	
		DRAWN -	REVISED -
		CTB	
		CHECKED -	REVISED -
		GAB	
		DATE -	REVISED -

**STATE OF ILLINOIS
DEPARTMENT OF TRANSPORTATION**

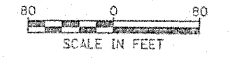
REMOVAL PLAN

SCALE: 1" = 80' SHEET NO. 1 OF 2 SHEETS STA. TO STA.

F.A. RTE.	SECTION	COUNTY	TOTAL SHEETS	SHEET NO.
	2009-136 I	MCHENRY	16	5
CONTRACT NO. 60K02				
FED. ROAD DIST. NO. 1 (ILLINOIS) FED. AID PROJECT				



ADDED ENTIRE SHEET



FILE NAME ...\\0160k02\shd-dem\01.dgn	USER NAME c.tb	DESIGNED CTB	REVISED 10/20/2010	STATE OF ILLINOIS DEPARTMENT OF TRANSPORTATION	BUILDING DEMOLITION & EROSION CONTROL PLAN		F.A. RTE.	SECTION 2009-137 DM	COUNTY MCHEMERY	TOTAL SHEETS 12	SHEET NO. 5A
	PLOT SCALE 40/2000 PL	CHECKED GAB	REVISED		SCALE: 1" = 60'	SHEET NO. 1 OF 2 SHEETS	STA.	TO STA.	CONTRACT NO. 60K02		
	PLOT DATE 9/21/2010	DATE	REVISED						FED. ROAD DIST. NO. 1 ILLINOIS FED. AID PROJECT		