

REV: 6

DATE: 09/13/07

APPROVER: RV

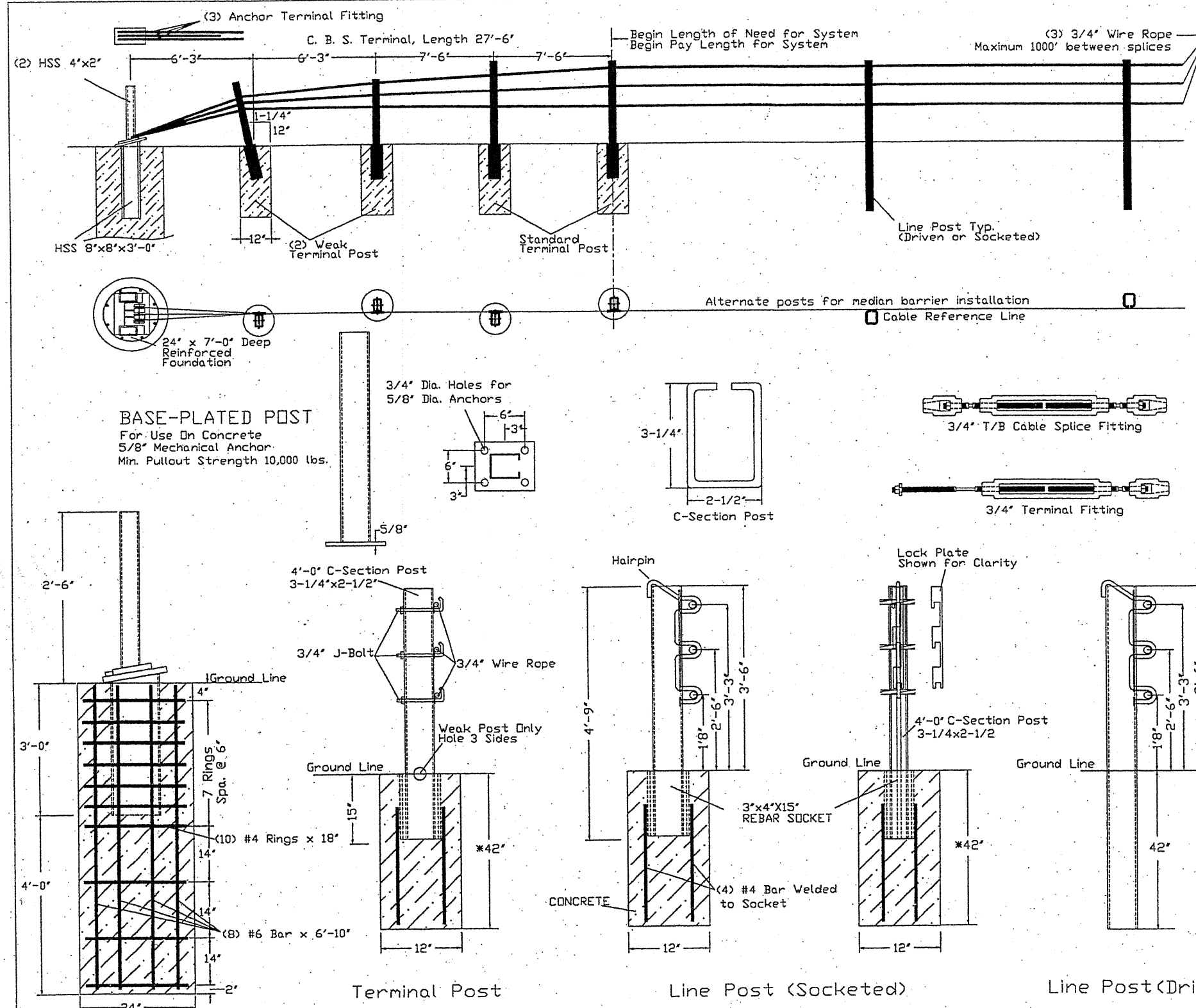
GENERAL NOTES

- For additional information contact Gibraltar, Inc. at 1-800-495-8957, or see the manufacturer's product manual.
- All concrete shall be minimum 2500 PSI.
- Alternate Post for bi-directional traffic flow. If installed for traffic in one direction install cables on traffic side of posts.
- The Cable Barrier System shall be installed on shoulders or on medians with slopes of 6:1 or flatter. If installed on slopes steeper than 6:1 up to 4:1 the TL-4 system performs as a TL-3 and Gibraltar must be contacted for various guidelines related to placement.
- The Cable Barrier System is accepted by the FHWA Test Level - 4
- See the MUTCD for proper "Barrier" delineation
- Rock Clause: Where solid rock is encountered:
 - For socketed post, continue digging 12" diameter, 15" deep into rock or the required plan depth, whichever comes first.
 - For driven post, core drill a 4" diameter hole 18" deep into rock or the required plan depth, whichever comes first.
 - For Anchor post, continue digging 24" diameter, 30" deep into rock or the required plan depth, whichever comes first.
- The Gibraltar cable barrier system shall be installed in NCHRP Report 350 standard compacted soil. Soil must be well drained.
- Every component to be galvanized.

Cable Tension	
-10F	8000
0	7600
10	7200
20	6800
30	6400
40	6000
50	5600
60	5200
70	4800
80	4400
90	4000
100	3600
110	3200

Allowable Deviation from Chart +/- 10%

Deflection	Post Spacing
9'3"	30.FT
9'	28.FT
8'	20.FT
7'	12.FT
6'8"	10.FT



Cable Release Anchor Post

Terminal Post

Line Post (Socketed)

Line Post (Driven)

*30"x12" Concrete Foundation with Min. 18" wide Mow Strip
 *42"x12" Deep w/o Mow Strip

FOR INFORMATION ONLY

GIBRALTAR
 320 Southland Road
 Burnet, Texas 78611
 1-800-495-8957

Cable Barrier System
 Patent Pending

SYSTEM: TL-4 SCALE: NTS DRAFTERS: EJ&TJ DATE: 09/13/07

FILE NAME =	USER NAME = nathanbc	DESIGNED -	REVISED -
en:\pwwork\pwwork\pwwork\nathanbc\0212218\0171\18-shr-plan.dgn		DRAWN -	REVISED -
PLOT SCALE = 1/8" = 1'-0"		CHECKED -	REVISED -
PLOT DATE = 6/21/2010		DATE -	REVISED -

STATE OF ILLINOIS
 DEPARTMENT OF TRANSPORTATION

CABLE BARRIER REPAIR
 AT VARIOUS EXPRESSWAY MEDIANS
 HIGH TENSION GUARDRAIL DETAILS (GIBRALTAR)

F.A. RTE.	SECTION	COUNTY	TOTAL SHEETS	SHEET NO.
VAR.	2010-071 I	VARIOUS	15	14
FED. ROAD DIST. NO. 1 ILLINOIS			FED. AID PROJECT	
CONTRACT NO. 60L56				