

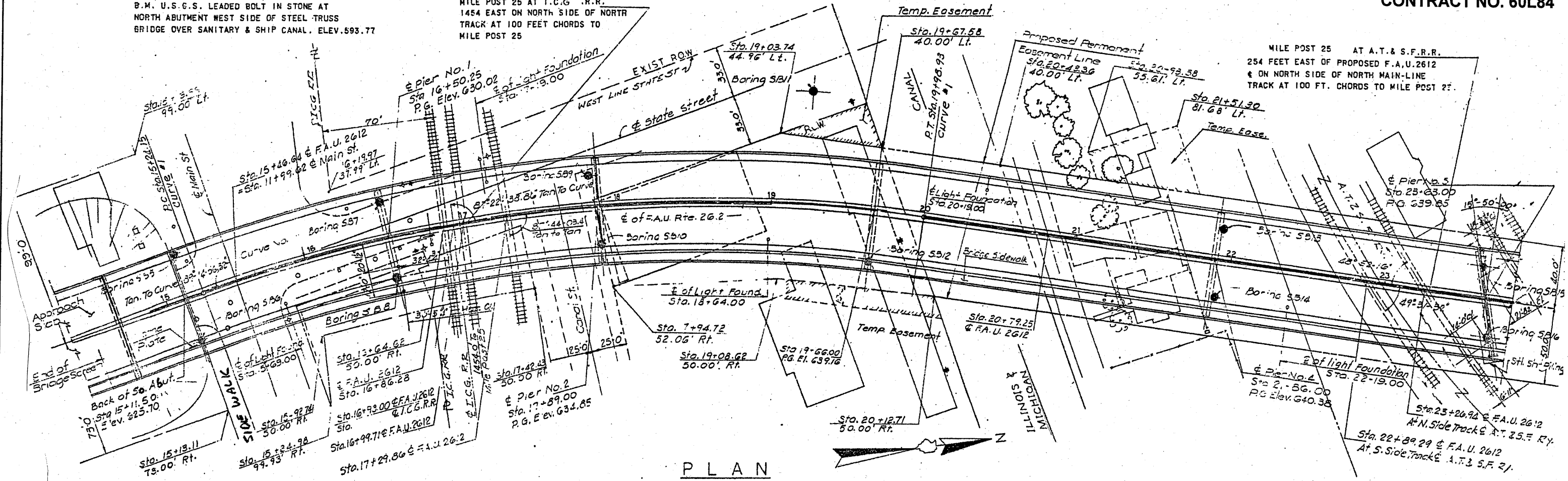
ROUTE	SECTION	COUNTY	TOTAL SHEETS	SHEET NUMBER
VARIOUS	2010-088-BP	COOK AND LAKE	25	9

CONTRACT NO. 60L84

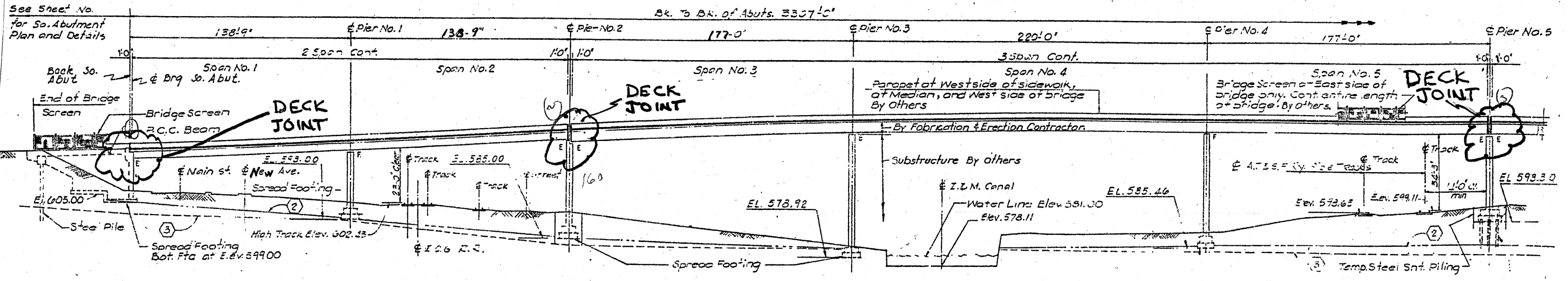
B.M. U.S.G.S. LEADED BOLT IN STONE AT NORTH ABUTMENT WEST SIDE OF STEEL TRUSS BRIDGE OVER SANITARY & SHIP CANAL. ELEV. 593.77

MILE POST 25 AT I.C.G. R.R. 1454 EAST ON NORTH SIDE OF NORTH TRACK AT 100 FEET CHORDS TO MILE POST 25

MILE POST 25 AT A.T. & S.F.R.R. 254 FEET EAST OF PROPOSED F.A.U. 2612 & ON NORTH SIDE OF NORTH MAIN-LINE TRACK AT 100 FT. CHORDS TO MILE POST 25



PLAN



ELEVATION

FOR INFORMATION ONLY

ILLINOIS DEPARTMENT OF TRANSPORTATION
 EXISTING BRIDGE PLAN
 LOCATION 2: SN 016-2504