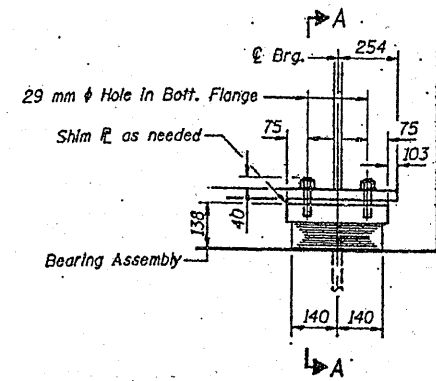
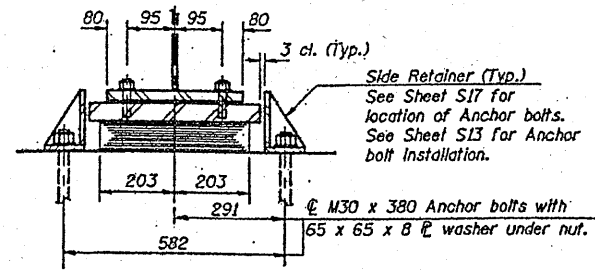


ROUTE	SECTION	COUNTY	TOTAL SHEETS	SHEET NUMBER
FAI 94	2010-089-BP	COOK	35	18

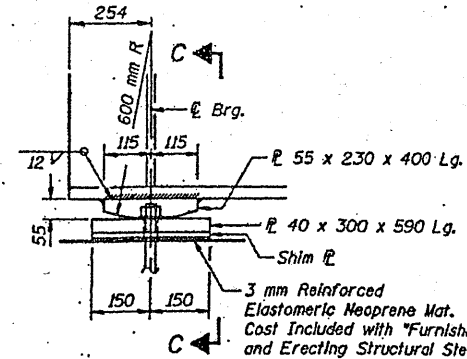
CONTRACT NO. 60L85



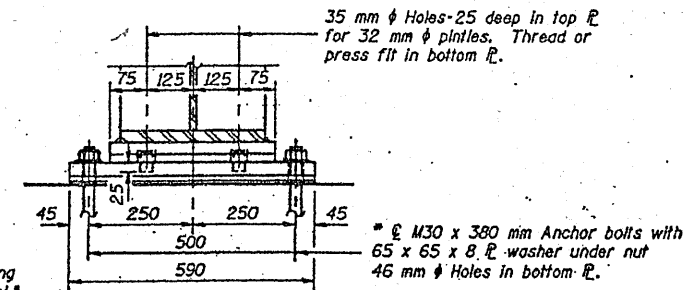
ELEVATION



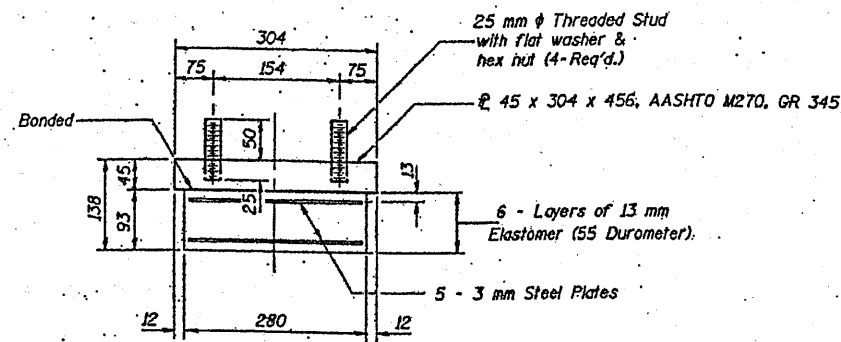
SECTION A-A



ELEVATION

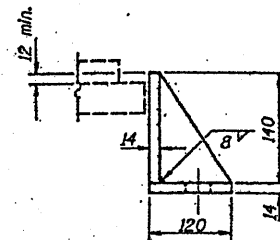


SECTION C-C



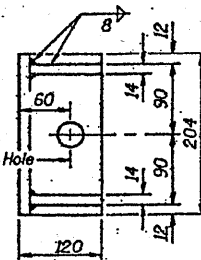
BEARING ASSEMBLY

TYPE I ELASTOMERIC EXP. BRG.
AT N. ABUTMENT BEAM 1A

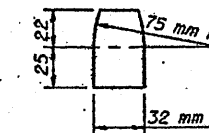


SIDE RETAINER

Equivalent rolled angle with stiffeners will be allowed in lieu of welded plates. Weight included with Structural Steel.



FIXED BEARING
AT S. ABUTMENT BEAM 1A
(1 required)

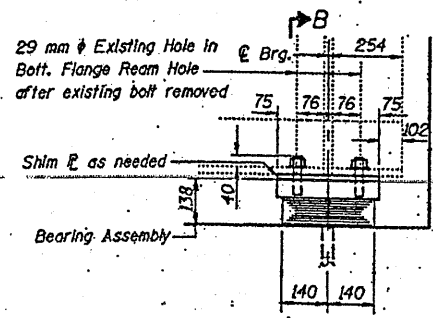


PINTELE

* Anchor bolts @ fixed bearings may be built into the masonry. See Sheet S19 for location of Anchor bolts. See Sheet S13 for Anchor bolt installation.

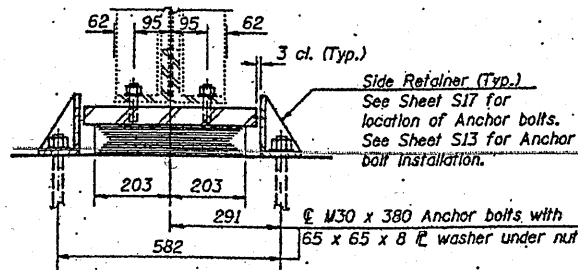
PROCEDURE TO JACK AND REMOVE EXISTING BEARINGS

1. The Contractor shall submit, for approval by the Engineer, plans for jacking prior to commencing any work of the bearings. Dead Load = 68.3 kN at each beam of the abutments without concrete. Min. Jack Capacity at each beam shall be 140 kN.
2. Jacking and removing existing bearings shall be done after deck removal is completed and before the new deck is poured.
3. All beams at one abutment shall be lifted simultaneously.
4. Jacking shall be limited to a maximum of 3 mm.
5. Remove existing sole plates, bearing rockers and bottom plates.
6. Cut off existing anchor bolts flush after concrete removal.
7. Install elastomeric bearings and steel fixed bearings and lower jacks before pouring new deck.

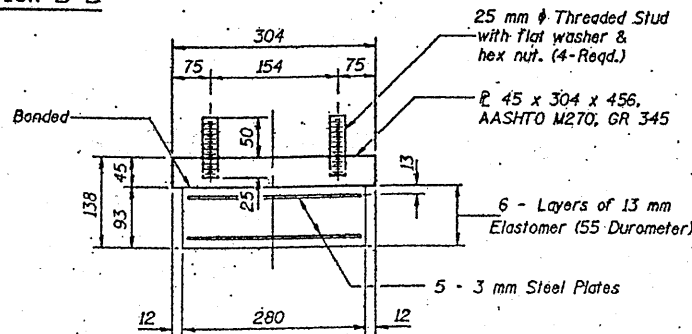


ELEVATION

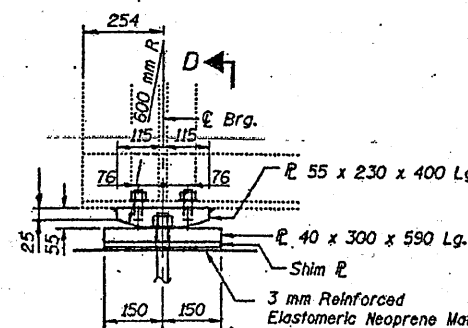
TYPE I ELASTOMERIC EXP. BRG.
AT N. ABUTMENT BEAMS 1-6



SECTION B-B

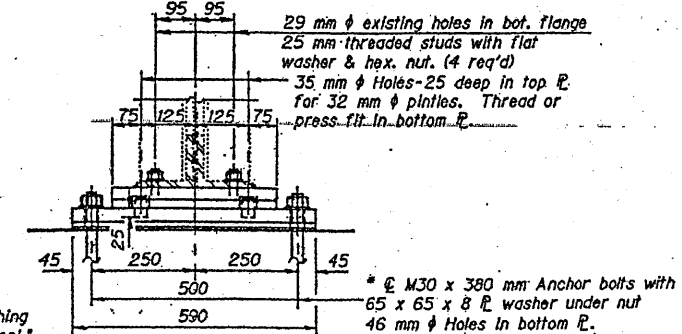


BEARING ASSEMBLY



ELEVATION

FIXED BEARING
AT S. ABUTMENT BEAM 1-6
(6 required)



SECTION D-D

SHEET 3 OF 3

ILLINOIS DEPARTMENT OF
TRANSPORTATION

EXISTING BRIDGE PLAN
SN 016-0153 (BRIDGE 3)