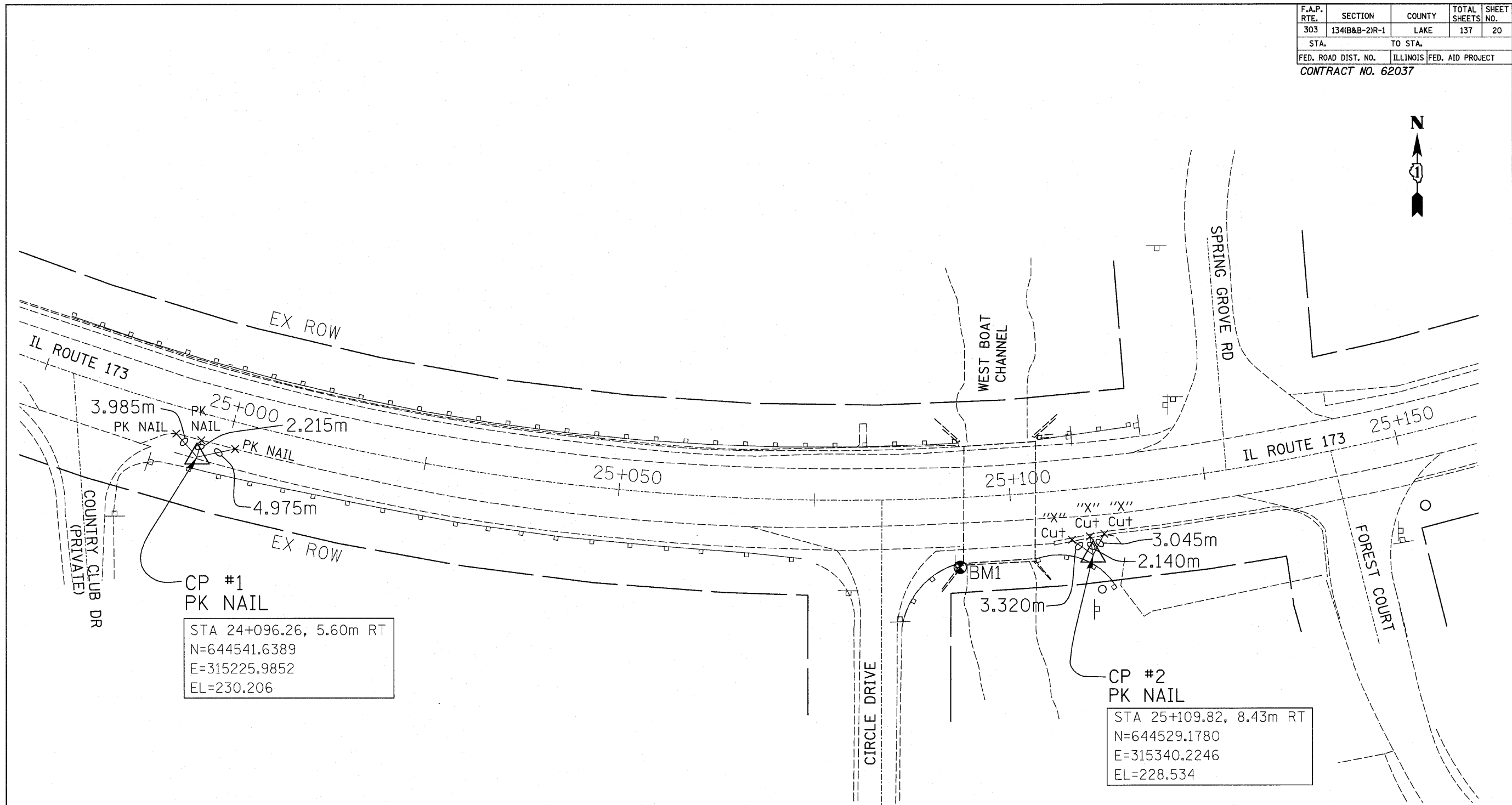


F.A.P. RTE.	SECTION	COUNTY	TOTAL SHEETS	SHEET NO.
303	134(B&B-2)R-1	LAKE	137	20
STA.		TO STA.		
FED. ROAD DIST. NO.		ILLINOIS FED. AID PROJECT		
CONTRACT NO. 62037				



CP #1  
PK NAIL  
STA 24+096.26, 5.60m RT  
N=644541.6389  
E=315225.9852  
EL=230.206

CP #2  
PK NAIL  
STA 25+109.82, 8.43m RT  
N=644529.1780  
E=315340.2246  
EL=228.534

BENCHMARK:  
BM1 STA. 25+095.13, 8.916m RT, A USGS REFERENCE MARK SET IN SOUTHWEST WINGWALL OF IL ROUTE 173 BRIDGE SN 049-0055 OVER WEST BOAT CHANNEL. EL. 228.867

REVISIONS	
NAME	DATE

ILLINOIS DEPARTMENT OF TRANSPORTATION  
IL ROUTE 173 OVER WEST BOAT CHANNEL  
**ALIGNMENT, TIES & BENCHMARKS**  
SCALE: NTS  
DRAWN BY JPG  
CHECKED BY JJD  
DATE: 3-8-10



3117TIE.DGN