

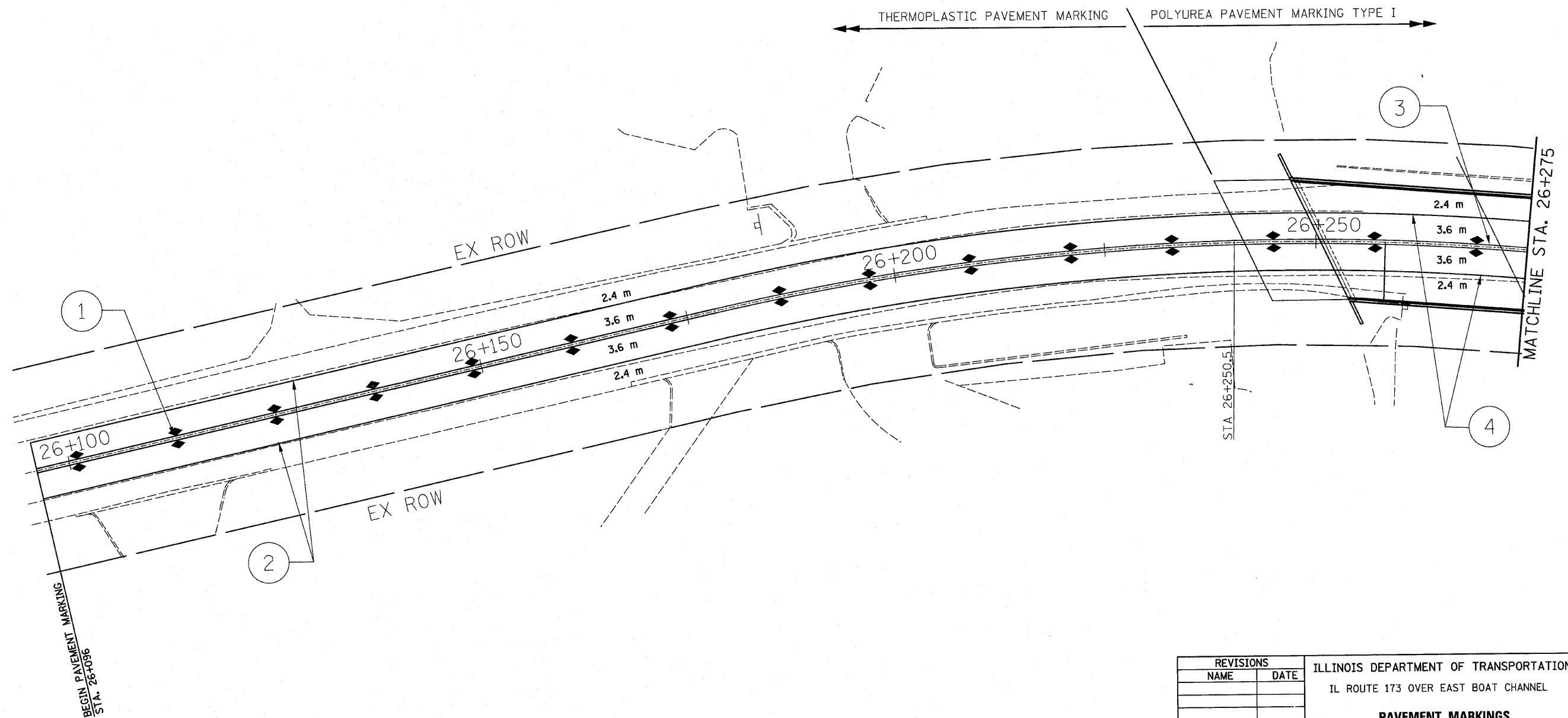
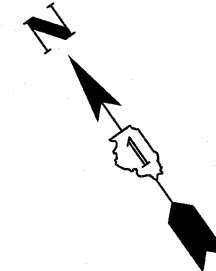
F.A.P. RTE.	SECTION	COUNTY	TOTAL SHEETS	SHEET NO.
303	134(B&B-2)R-1	LAKE	137	57
STA. 26+100 TO STA. 26+400				
FED. ROAD DIST. NO. 1		ILLINOIS	FED. AID PROJECT	
CONTRACT NO. 62037				

NOTES:

1. RAISED REFLECTIVE PAVEMENT MARKERS ON BRIDGE SHOULD BE RAISED REFLECTIVE PAVEMENT MARKER (BRIDGE), TWO-WAY AMBER, 12m O.C.
2. ALL PAVEMENT MARKINGS ON THE PC CONCRETE BRIDGE SHALL BE POLYUREA PAVEMENT MARKING TYPE I.

PAVEMENT MARKING LEGEND

- ① THERMOPLASTIC PAVEMENT MARKING, SOLID DOUBLE YELLOW (100mm)
- ② THERMOPLASTIC PAVEMENT MARKING, SOLID WHITE (100mm)
- ③ POLYUREA PAVEMENT MARKING TYPE I, SOLID DOUBLE YELLOW (100mm)
- ④ POLYUREA PAVEMENT MARKING TYPE I, SOLID WHITE (100mm)
- ◆ RAISED REFLECTIVE PAVEMENT MARKERS, TWO-WAY AMBER MARKER, 12m O.C.



3116PAVBRKAST.DGN

REVISIONS		ILLINOIS DEPARTMENT OF TRANSPORTATION IL ROUTE 173 OVER EAST BOAT CHANNEL PAVEMENT MARKINGS
NAME	DATE	
		SCALE: 1:250 DRAWN BY CLG CHECKED BY JJD DATE 3-8-10