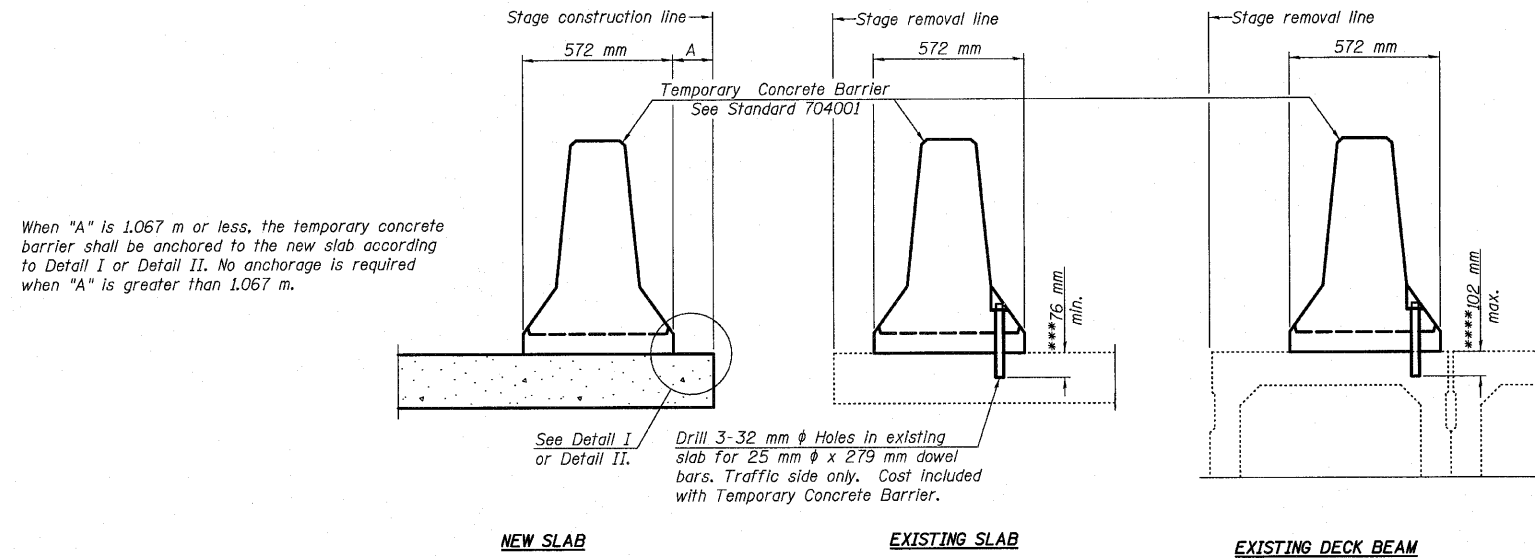


STATE OF ILLINOIS  
DEPARTMENT OF TRANSPORTATION

ROUTE NO.	SECTION	COUNTY	SHEET	SHEET
FAP 303 IL. 173	134(B&B-2)R-1	LAKE	137	78
FED. ROAD DIST. NO. 7	ILLINOIS	FED. AID PROJECT		

SHEET NO. 15  
17 SHEETS



SECTIONS THRU SLAB OR DECK BEAM

**NOTES**

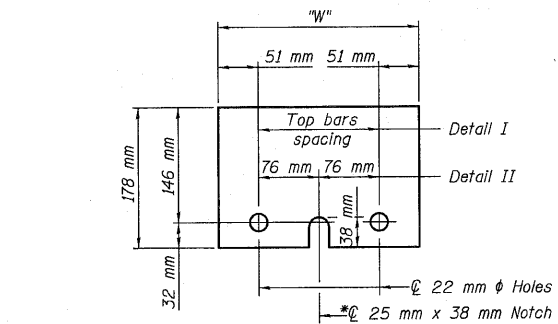
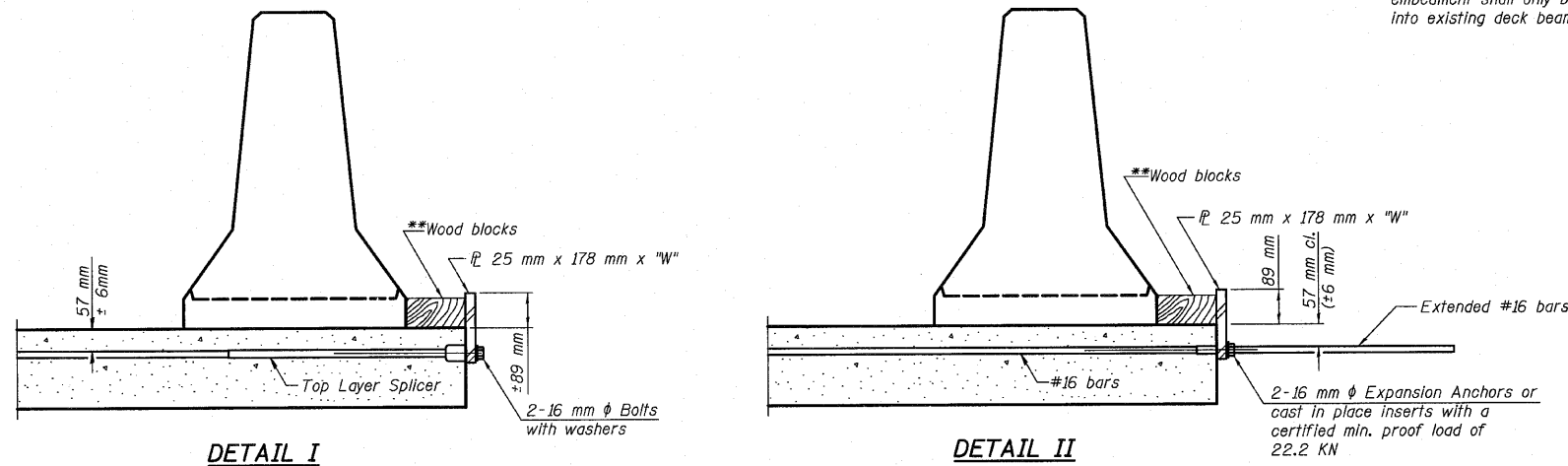
Detail I - With Bar Splicer or Couplers:  
Connect one (1) 25 mm x 178 mm x 254 mm steel  $\bar{L}$  to the top layer of couplers with 2- 16 mm  $\phi$  bolts screwed to coupler at approximate  $\bar{C}$  of each barrier panel.

Detail II - With Extended Reinforcement Bars:  
Connect one (1) 25 mm x 178 mm x 254 mm steel  $\bar{L}$  to the concrete slab or concrete wearing surface with 2- 16 mm  $\phi$  Expansion Anchors or cast in place inserts spaced between the top layer of reinforcement at approximate  $\bar{C}$  of each barrier panel.

Cost of anchorage is included with Temporary Concrete Barrier.  
The 25 mm x 178 mm x 254 mm plate shall not be removed until stage II construction forms and all reinforcement bars are in place and the concrete is ready to be placed.

\*\*\* Dimension shown is minimum required embedment into concrete.  
If hot-mix asphalt wearing surface is present, minimum embedment shall be in addition to wearing surface depth.

\*\*\*\* If existing deck beam is to remain in place after stage construction, embedment shall only be into wearing surface and not into existing deck beam concrete.



STEEL RETAINER  $\bar{L}$  25 mm x 178 mm x 254 mm

\* Required only with Detail II

\*\* Wood blocks may be omitted when required to provide minimum stage traffic lane width. When the wood blocks are omitted, the concrete barrier shall be in direct contact with the steel retainer plate.

"W" = Top bars spacing + 102 mm

DESIGNED	PAT2
CHECKED	RCJ/JRF
DRAWN	RDS
CHECKED	PAT2



TEMPORARY CONCRETE BARRIER  
FAP 303 IL. ROUTE 173  
OVER WEST BOAT CHANNEL  
SECTION 134(B&B-2)R-1  
LAKE COUNTY  
STATION 25+098.390  
STRUCTURE NO. 049-0055