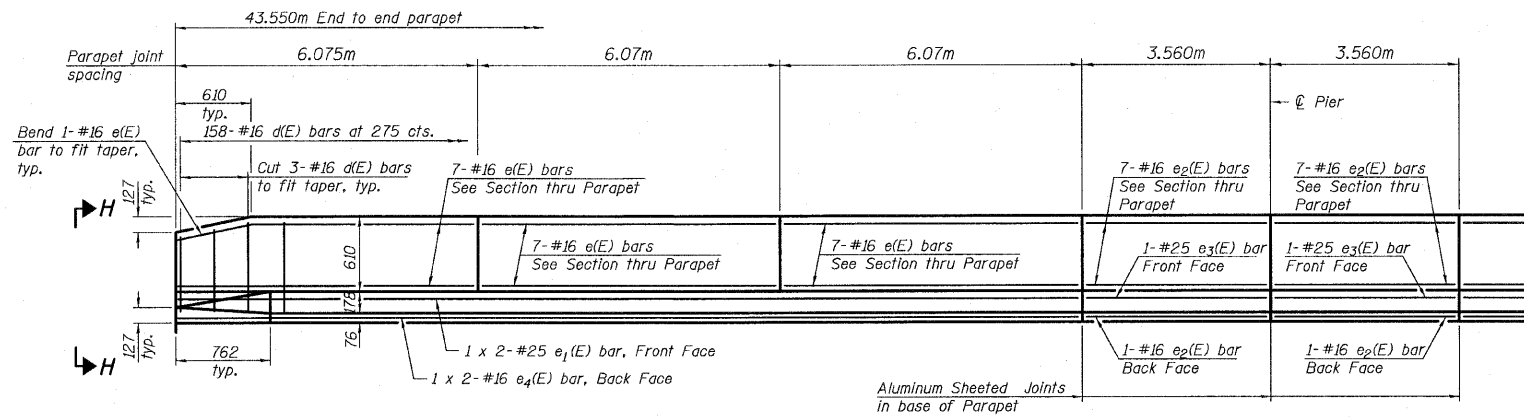


STATE OF ILLINOIS  
DEPARTMENT OF TRANSPORTATION

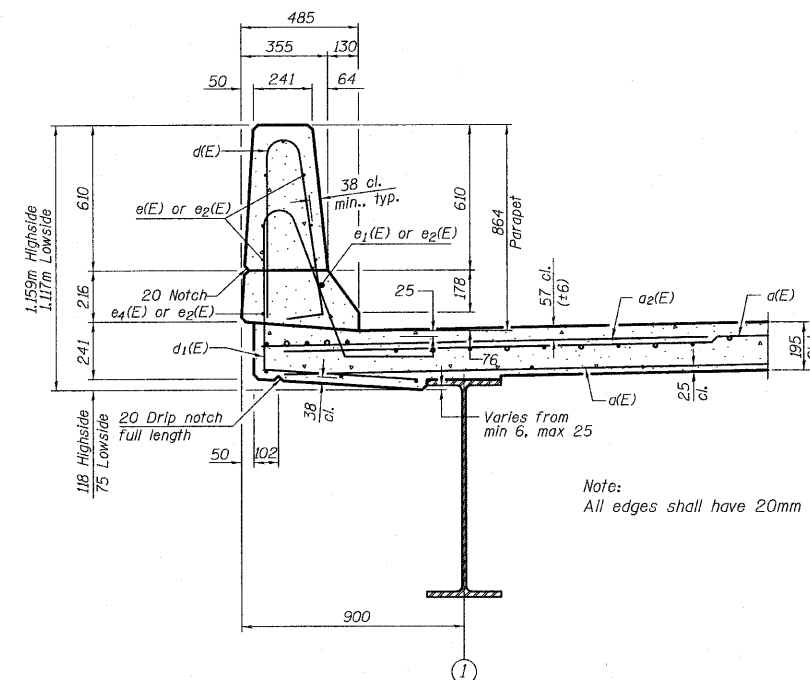
ROUTE NO.	SECTION	COUNTY	DATE	SHEET	SHEET NO.
FAP 303 IL. 173	DRMB-2R-1	LAKE	137	10	23 SHEETS
FED. ROAD DIST. NO. 7	ILLINOIS	FED. AID PROJECT-			



**MINIMUM BAR LAP**  
(Parapet)

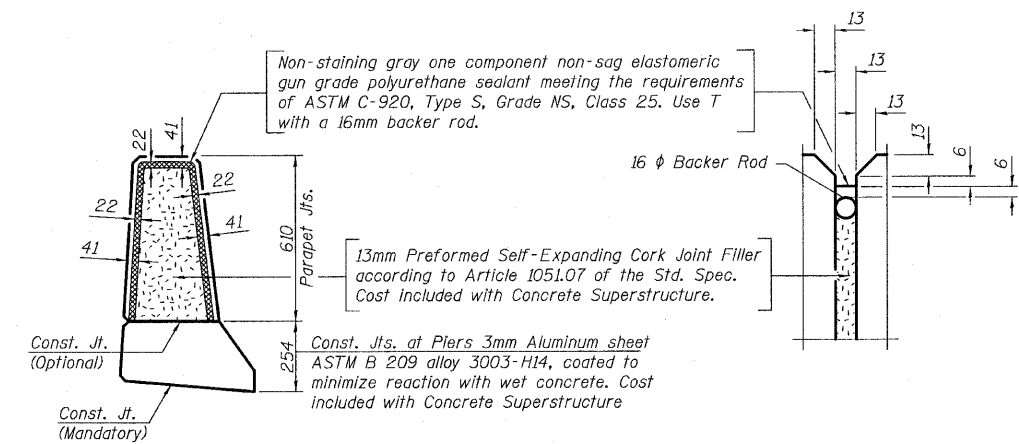
- #10 bar = 350
- #16 bar = 470
- #19 bar = 610
- #25 bar = 1.010m

**INSIDE ELEVATION OF PARAPET**



**SECTION THRU PARAPET**

Highside Shown  
Lowside Similar



**PARAPET JOINT DETAILS**

**NOTES**

- See Sheet #8 for deck details and Bill of Material.
- Reinforcement bars designated (E) shall be epoxy coated.
- All dimensions are in millimeters (mm) except as noted.
- Reinforcement bars in Parapet are billed with Superstructure on Sheet #8.
- Concrete in Parapet is included with concrete Superstructure on Sheet #8.
- See Sheet #12 for Section H-H.

DESIGNED	JRF
CHECKED	RCJ
DRAWN	RDS
CHECKED	JRF



**SUPERSTRUCTURE DETAILS-2**  
FAP 303 IL. ROUTE 173  
OVER EAST BOAT CHANNEL  
SECTION 134(B&B-2)R-1  
LAKE COUNTY  
STATION 26+271.906  
STRUCTURE NO. 049-0198