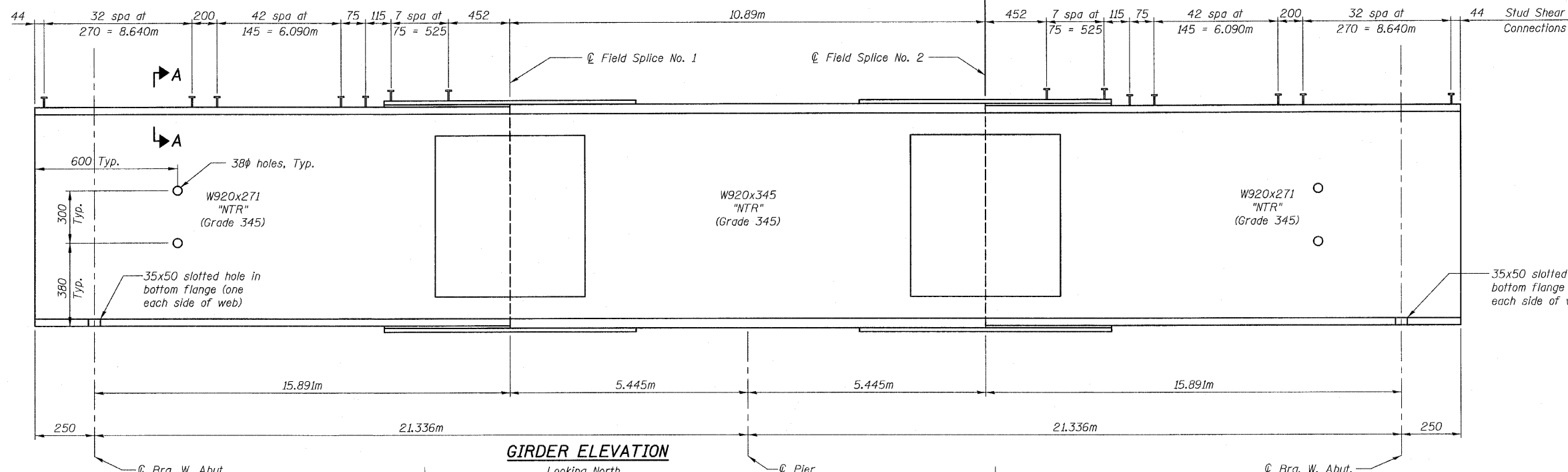


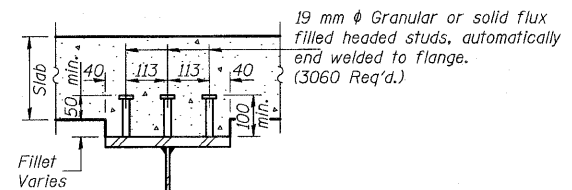
STATE OF ILLINOIS
DEPARTMENT OF TRANSPORTATION

ROUTE NO.	SECTION	COUNTY	TOTAL SHEETS	SHEET NO.
FAP 303 IL 173	134(B&B-2)R-1	LAKE	137	14

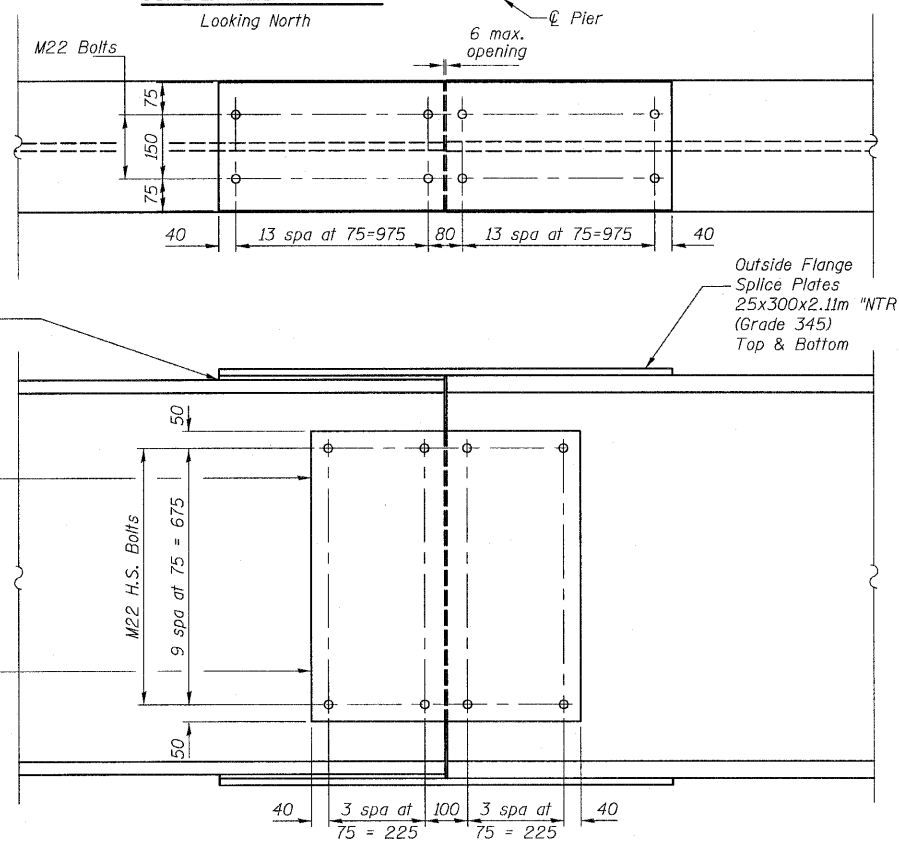
SHEET NO. 14
23 SHEETS



GIRDER ELEVATION



SECTION A-A



DETAIL OF SPLICES NO. 1 AND 2

(Splice φ's shall be M270 M Grade 345)

TOP OF GIRDER ELEVATIONS

(For Fabrication Only)

LOCATION	☉ BEARING W. ABUT.	*☉ FIELD SPLICE NO. 1	☉ PIER	*☉ FIELD SPLICE NO. 2	☉ BEARING E. ABUT.
Girder 1	228.641	228.622	228.611	228.600	228.555
Girder 2	228.509	228.486	228.474	228.461	228.412
Girder 3	228.377	228.351	228.337	228.323	228.268
Girder 4	228.244	228.215	228.199	228.183	228.123
Girder 5	228.112	228.078	228.061	228.044	227.977
Girder 6	227.979	227.941	227.922	227.903	227.831

*Elevation at Field Splice Location is measured at top of W920x345

NOTES

Bearings and Structural Steel are Furnished in a separate contract. Cost for erecting these items is included in this contract as "Erecting Structural Steel"

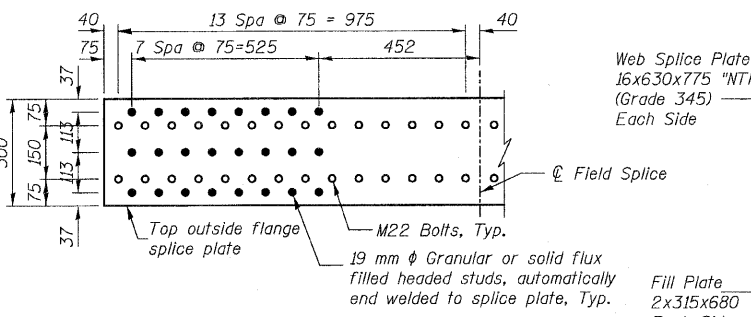
For Anchor Bolt Installation Details, see Sheet #21.

For Bearing Details see Sheet #15.

For Diaphragm Details see Sheet #13.

All dimensions are in millimeters (mm) except as noted.

Load Carrying components designated "NTR" shall conform to the Supplemental Requirements for Notch Toughness Zone 2.



SHEAR STUDS ON SPLICE PLATE LAYOUT

DESIGNED	JRF
CHECKED	RCJ
DRAWN	RDS
CHECKED	JRF



STEEL GIRDER DETAILS
FAP 303 IL. ROUTE 173
OVER EAST BOAT CHANNEL
SECTION 134(B&B-2)R-1
LAKE COUNTY
STATION 26+271.906
STRUCTURE NO. 049-0198

3116-049-0198.dgn