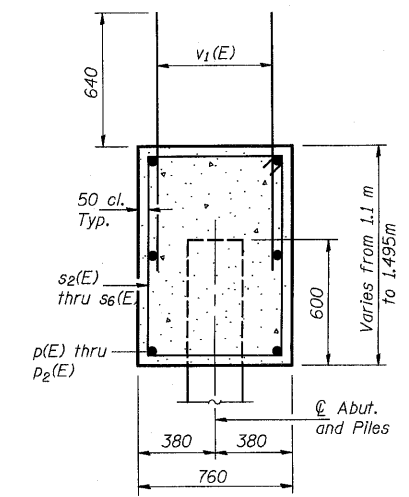
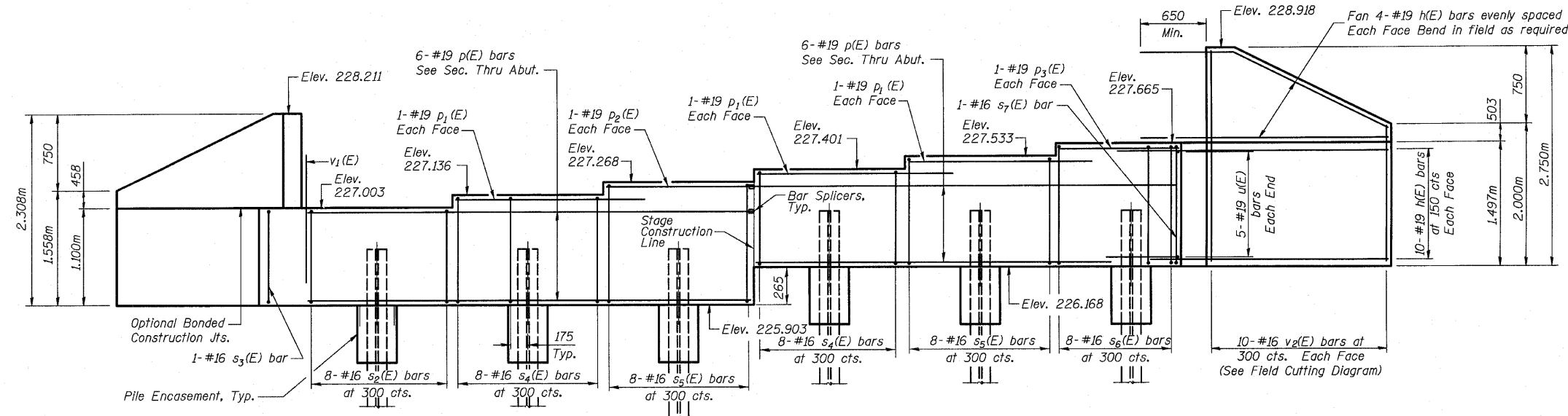


ROUTE NO.	SECTION	COUNTY	TOTAL SHEETS	SHEET NO.
FAP 303 IL 173	134(B&B)-2R-1	LAKE	137	93
FED. ROAD DIST. NO. 7		ILLINOIS	FED. AID PROJECT-	

SHEET NO. 16
23 SHEETS

STATE OF ILLINOIS
DEPARTMENT OF TRANSPORTATION

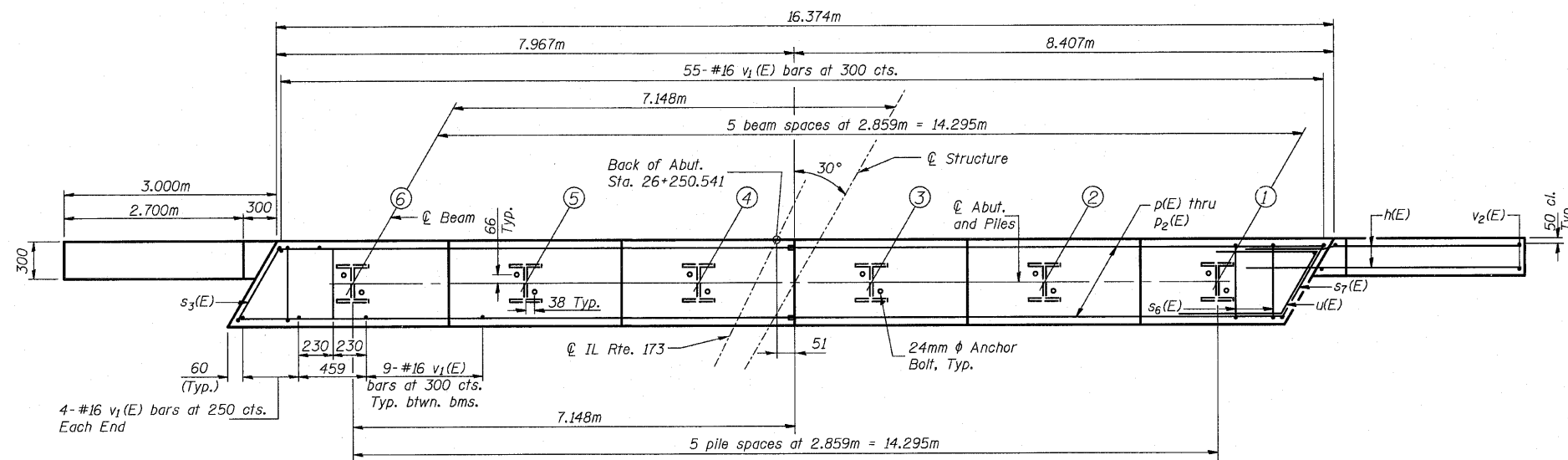


WEST ABUTMENT ELEVATION (Looking West)

SEC. THRU ABUT.
Dimensions at right angle to abutment

WEST ABUTMENT
BILL OF MATERIAL

Bar	No.	Size	Length	Shape
h(E)	56	#19	3,750	—
p(E)	12	#19	7,887	—
p ₁ (E)	6	#19	3,540	—
p ₂ (E)	2	#19	2,779	—
p ₃ (E)	2	#19	2,170	—
s ₂ (E)	8	#16	3,600	□
s ₃ (E)	1	#16	3,804	□
s ₄ (E)	16	#16	3,860	□
s ₅ (E)	16	#16	4,128	□
s ₆ (E)	8	#16	4,390	□
s ₇ (E)	1	#16	4,594	□
u(E)	10	#19	2,828	┘
v ₁ (E)	108	#16	1,280	—
v ₂ (E)	20	#16	4,050	—
Concrete Structures			m ³	20
Concrete Encasement			m ³	2.0
Reinforcement Bars Epoxy Coated			kg	1,470
Furnishing Steel Piles HP310x79			m	105
Driving Steel Piles			m	105
Test Pile, HP310x79			each	1
Structure Excavation			m ³	550

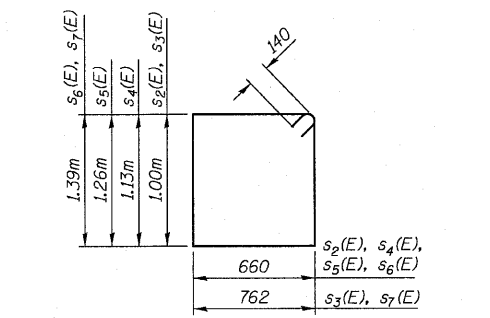
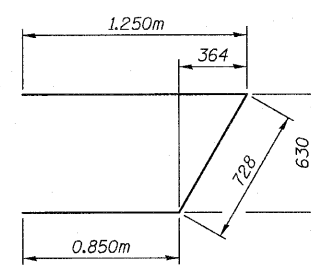
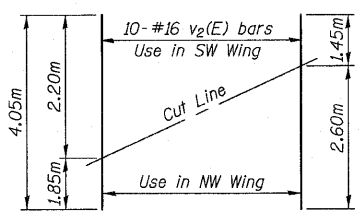


MINIMUM BAR LAP
#19 bar = 850

PILE DATA

Type: HP 310x79
 Nominal Required Bearing: 580kN
 Allowable Resistance Available: 580kN
 Est. Length: 20.5m
 No. Production Piles Required: 5
 No. Test Piles: 1

DESIGNED	JRF
CHECKED	RCJ
DRAWN	RDS
CHECKED	JRF



NOTES

- Pour steps monolithically with cap.
- Place reinforcement in cap to miss anchor bolts.
- Reinforcement bars designated (E) shall be epoxy coated.
- All dimensions are in millimeters (mm) except as noted.
- Stage Construction Line differs from Stage Construction Line in the deck above due to the skew of the bridge.
- See Sheet 21 for Pile Encasement details.

WEST ABUTMENT
 FAP 303 IL. ROUTE 173
 OVER EAST BOAT CHANNEL
 SECTION 134(B&B)-2R-1
 LAKE COUNTY
 STATION 26+271.906
 STRUCTURE NO. 049-0198