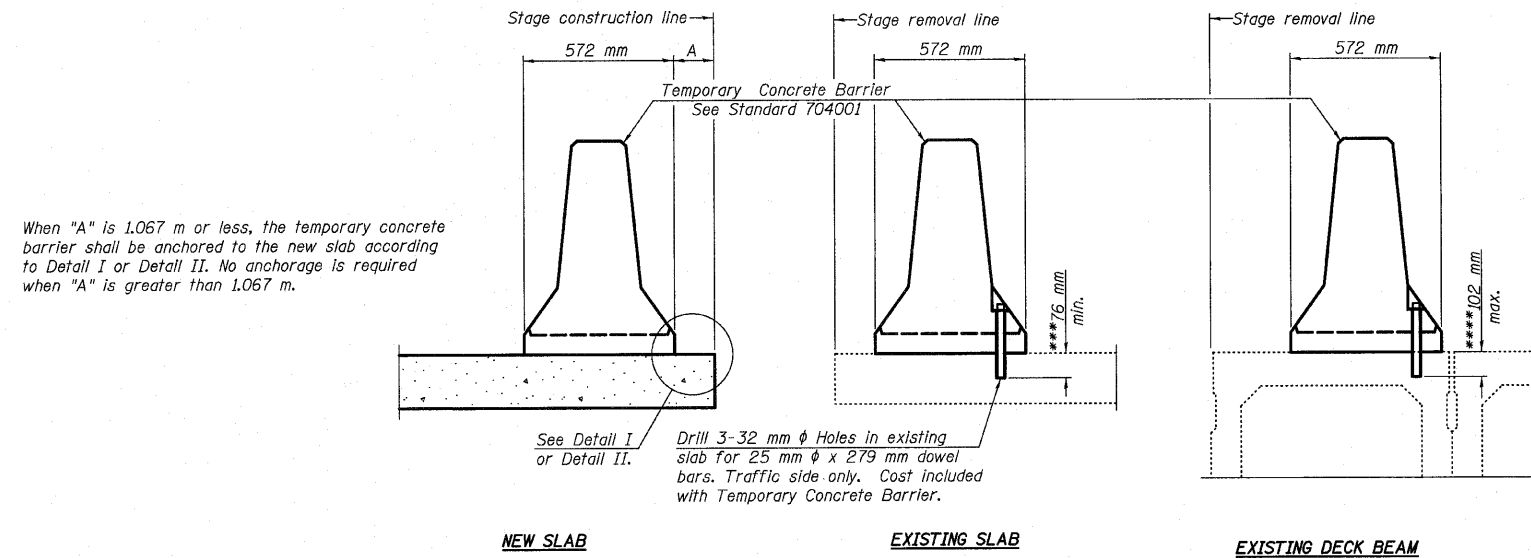


STATE OF ILLINOIS
DEPARTMENT OF TRANSPORTATION

ROUTE NO.	SECTION	COUNTY	SHEET	SHEET
FAP 303 IL 173	134(B&B-2)R-1	LAKE	137	99
FED. ROAD DIST. NO. 7	SUBNO.	FED. AID PROJECT		

SHEET NO. 19
23 SHEETS



When "A" is 1.067 m or less, the temporary concrete barrier shall be anchored to the new slab according to Detail I or Detail II. No anchorage is required when "A" is greater than 1.067 m.

See Detail I or Detail II.
Drill 3-32 mm ϕ Holes in existing slab for 25 mm ϕ x 279 mm dowel bars. Traffic side only. Cost included with Temporary Concrete Barrier.

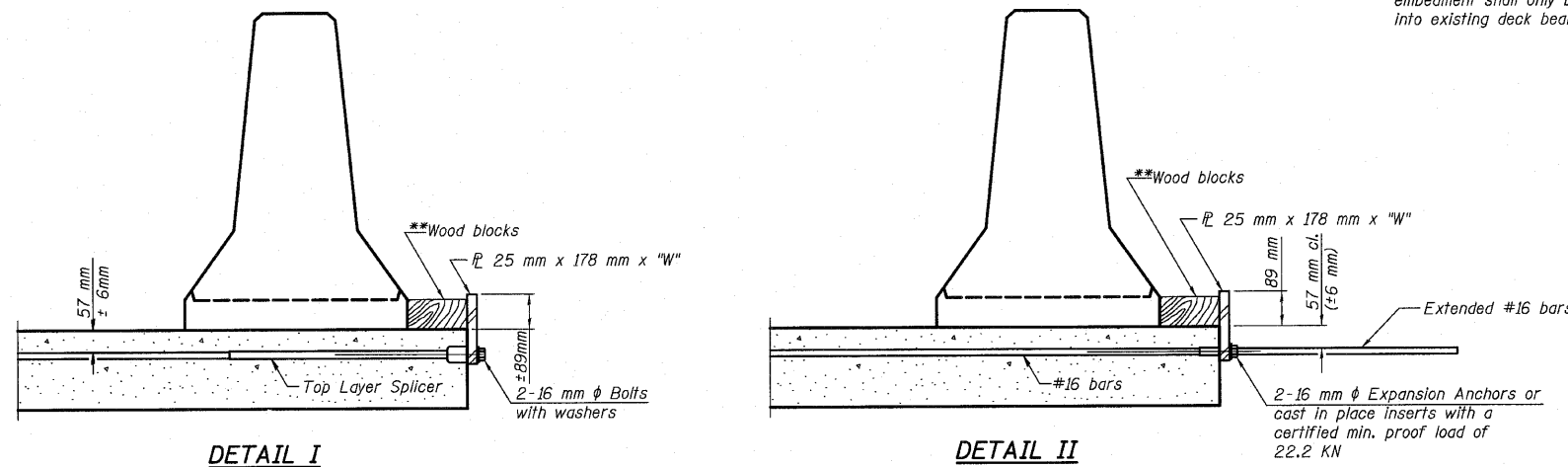
NOTES

Detail I - With Bar Splicer or Couplers:
Connect one (1) 25 mm x 178 mm x 254 mm steel \bar{L} to the top layer of couplers with 2- 16 mm ϕ bolts screwed to coupler at approximate \bar{C} of each barrier panel.

Detail II - With Extended Reinforcement Bars:
Connect one (1) 25 mm x 178 mm x 254 mm steel \bar{L} to the concrete slab or concrete wearing surface with 2- 16 mm ϕ Expansion Anchors or cast in place inserts spaced between the top layer of reinforcement at approximate \bar{C} of each barrier panel.

Cost of anchorage is included with Temporary Concrete Barrier. The 25 mm x 178 mm x 254 mm plate shall not be removed until stage II construction forms and all reinforcement bars are in place and the concrete is ready to be placed.

SECTIONS THRU SLAB OR DECK BEAM

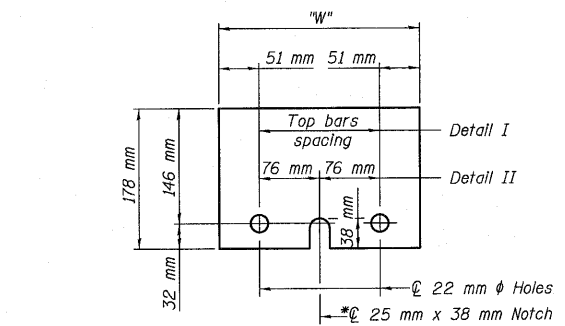


*** Dimension shown is minimum required embedment into concrete. If hot-mix asphalt wearing surface is present, minimum embedment shall be in addition to wearing surface depth.

**** If existing deck beam is to remain in place after stage construction, embedment shall only be into wearing surface and not into existing deck beam concrete.

** Wood blocks may be omitted when required to provide minimum stage traffic lane width. When the wood blocks are omitted, the concrete barrier shall be in direct contact with the steel retainer plate.

"W" = Top bars spacing + 102 mm



STEEL RETAINER \bar{L} 25 mm x 178 mm x 254 mm

* Required only with Detail II

DESIGNED	JRF
CHECKED	RCJ
DRAWN	RDS
CHECKED	JRF



TEMPORARY CONCRETE BARRIER
FAP 303 IL. ROUTE 173
OVER EAST BOAT CHANNEL
SECTION 134(B&B-2)R-1
LAKE COUNTY
STATION 26+271.906
STRUCTURE NO. 049-0198