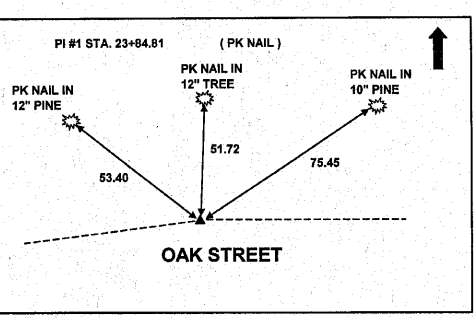
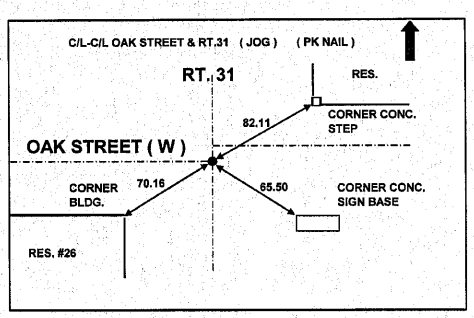
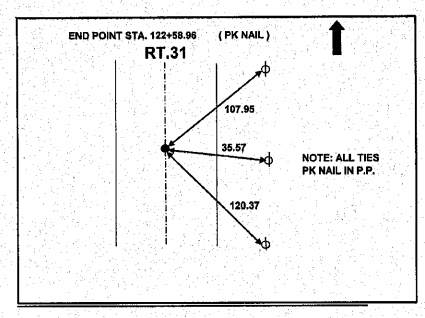


F.A.U. RTE.	SECTION	COUNTY	TOTAL SHEETS	SHEET NO.
3887	A-R-N-1	KANE	77	10
STA.		TO STA.		
FED. ROAD DIST. NO.		ILLINOIS FED. AID PROJECT		



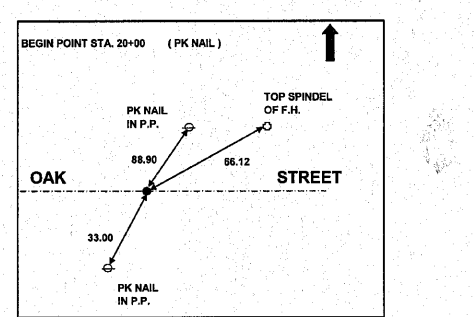
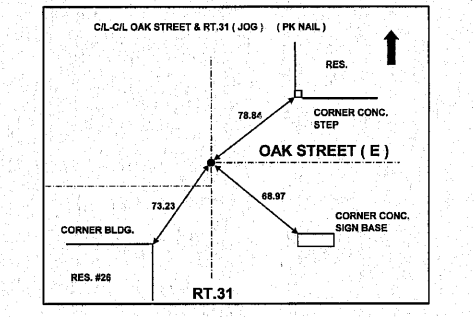
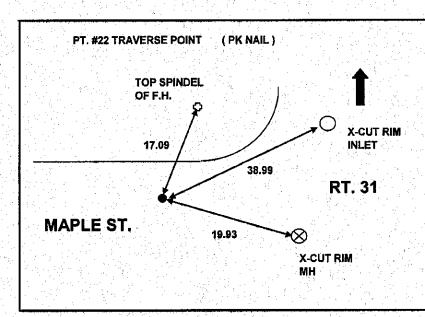
POT Sta 20+00.00
PC Sta 20+46.95

EXIST. CURVE E0AK1
PI STA. = 2+384.81
 $\Delta = 3^\circ 51' 58''$ (RT)
D = $0^\circ 34' 21''$
R = 10,010.12'
T = 337.86'
L = 675.46'
E = 5.70'
e = -----
T.R. = -----
S.E. RUN = -----
P.C. STA. = 2+046.95
P.T. STA. = 2+722.41

PROP. CURVE P-OAK-1
PI STA. = 2+384.81
 $\Delta = 3^\circ 51' 58''$ (RT)
D = $0^\circ 34' 21''$
R = 10,010.12'
T = 337.86'
L = 675.46'
E = 5.70'
e = -----
T.R. = -----
S.E. RUN = -----
P.C. STA. = 2+046.95
P.T. STA. = 2+722.41

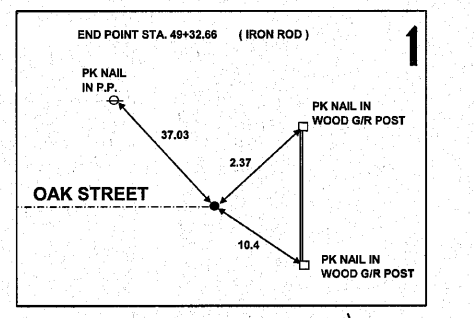
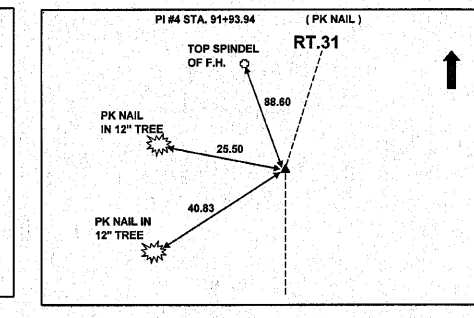
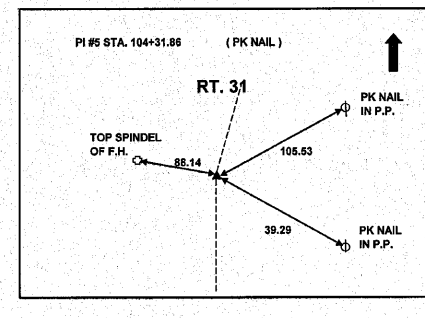
BENCHMARKS

- BM #1 ELEV. 688.90
A "X" CUT ON N.W. BOLT OF FIRE HYDRANT AT N.W. CORNER OF IL 31 & MAPLE ST.
- BM #2 ELEV. 685.72
A "X" CUT ON N.W. BOLT OF FIRE HYDRANT AT N.W. CORNER OF IL 31 & OAK ST.
- BM #3 ELEV. 679.64
A " " CUT IN N.W. CORNER ON CONC. BASE OF TRAFFIC CONTROL BOX AT N.E. CORNER OF IL 31 & STATE ST.
- BM #4 ELEV. 684.57
A "X" CUT ON N.W. BOLT OF FIRE HYDRANT AT THE EAST SIDE OF IL 31 & AIRPORT RD.
- BM #5 ELEV. 687.01
A " " CUT IN N.W. CORNER ON CONC. BASE OF TRAFFIC SIGNAL AT S.W. CORNER OF IL 31 & AIRPORT RD.
- BM #6 ELEV. 684.85
A "X" CUT ON N.W. BOLT OF FIRE HYDRANT AT N.W. CORNER OF OUK ST. & ADAM ST.
- BM #7 ELEV. 686.23
A "X" CUT ON N.E. CORNER OF FIRE HYDRANT 100' W. OF WILLOW WAY, N. SIDE OF OAK ST.
- BM #8 ELEV. 711.65
A "X" CUT ON N.W. BOLT OF FIRE HYDRANT BETWEEN #322 & #324 S. SIDE OF OAK ST

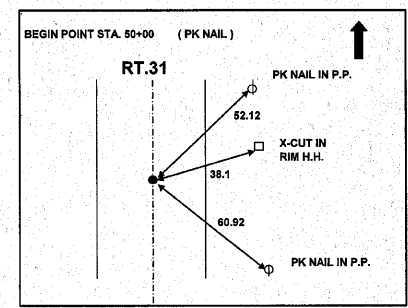
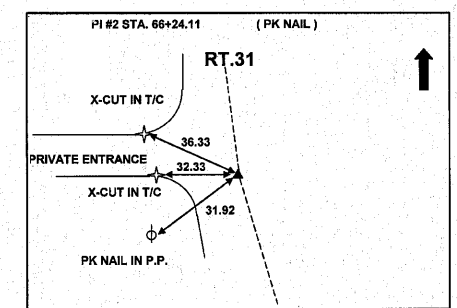
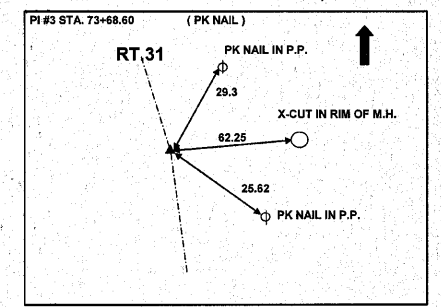
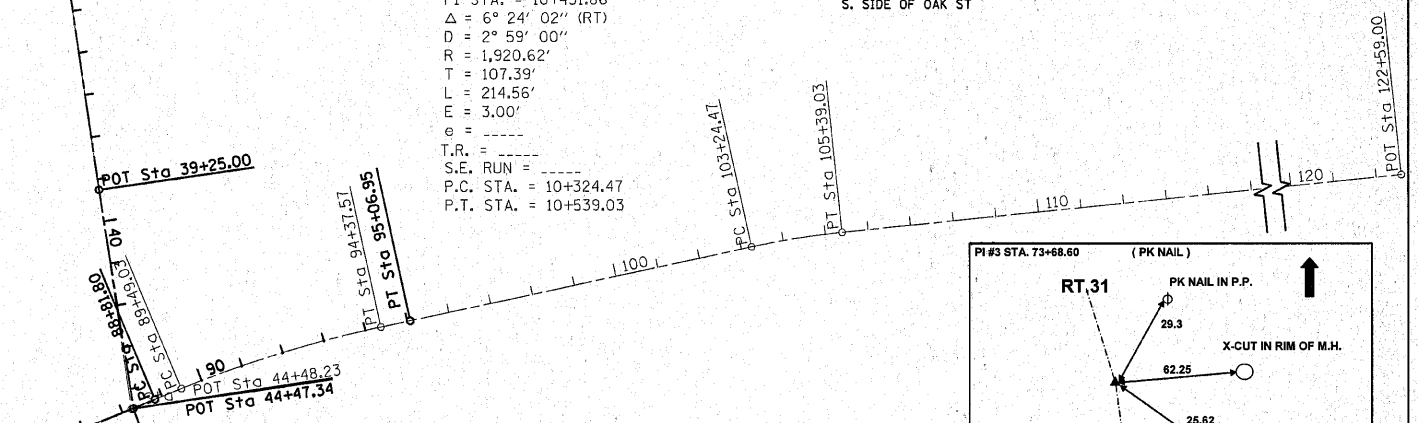
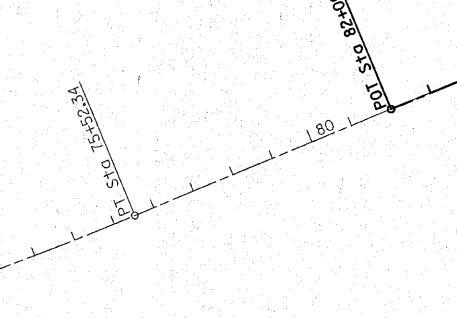
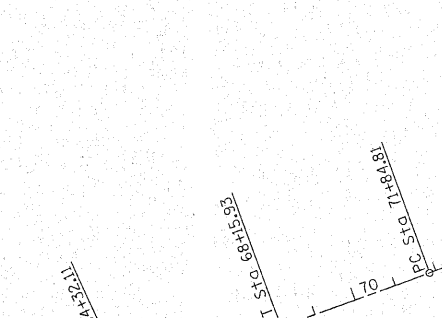
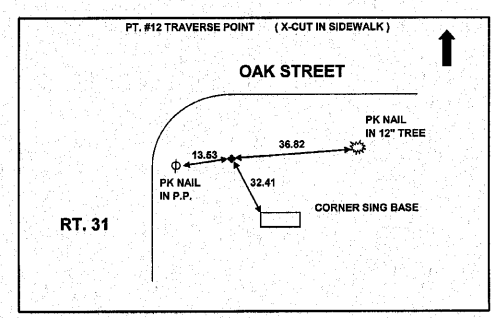


PROP. CURVE P-IL31-1
PI STA. = 9+195.21
 $\Delta = 10^\circ 14' 02''$ (RT)
D = $1^\circ 38' 13''$
R = 3,500.00'
T = 313.41'
L = 625.15'
E = 14.00'
e = -----
T.R. = -----
S.E. RUN = -----
P.C. STA. = 8+881.80
P.T. STA. = 9+506.95

EXIST. CURVE E31-3
PI STA. = 9+193.95
 $\Delta = 10^\circ 11' 34''$ (RT)
D = $2^\circ 05' 11''$
R = 2,746.20'
T = 244.92'
L = 488.55'
E = 10.90'
e = -----
T.R. = -----
S.E. RUN = -----
P.C. STA. = 8+949.03
P.T. STA. = 9+437.57

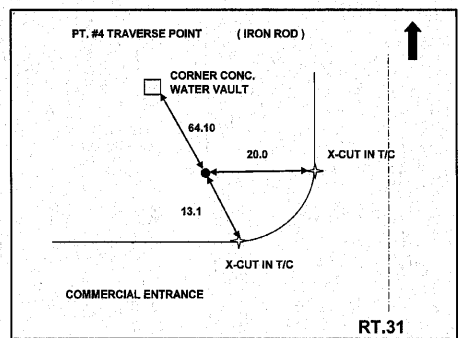


EXIST. CURVE E31-4
PI STA. = 10+431.86
 $\Delta = 6^\circ 24' 02''$ (RT)
D = $2^\circ 59' 00''$
R = 1,920.62'
T = 107.39'
L = 214.56'
E = 3.00'
e = -----
T.R. = -----
S.E. RUN = -----
P.C. STA. = 10+324.47
P.T. STA. = 10+539.03



EXIST. CURVE E31-1
PI STA. = 6+624.11
 $\Delta = 4^\circ 17' 49''$ (RT)
D = $1^\circ 07' 10''$
R = 5,117.97'
T = 192.00'
L = 383.82'
E = 3.60'
e = -----
T.R. = -----
S.E. RUN = -----
P.C. STA. = 6+432.11
P.T. STA. = 6+815.93

EXIST. CURVE E31-2
PI STA. = 7+368.60
 $\Delta = 2^\circ 29' 39''$ (LT)
D = $0^\circ 40' 43''$
R = 8,442.96'
T = 183.79'
L = 367.52'
E = 2.00'
e = -----
T.R. = -----
S.E. RUN = -----
P.C. STA. = 7+184.81
P.T. STA. = 7+552.34



REVISIONS	
NAME	DATE

ILLINOIS DEPARTMENT OF TRANSPORTATION
IL. RTE. 31 (W. LINCOLNWAY ST.)
AT OAK ST./GIBSON AVE.
ALIGNMENT & TIE PLAN

SCALE: VERT. 1"=200'
DATE 3/12/2010

DRAWN BY
CHECKED BY

PLOT DATE = 3/12/2010
FILE NAME = C:\Users\shiva\My Documents\PROJECTS\62914\62914-10-10.dwg
USER NAME = shiva