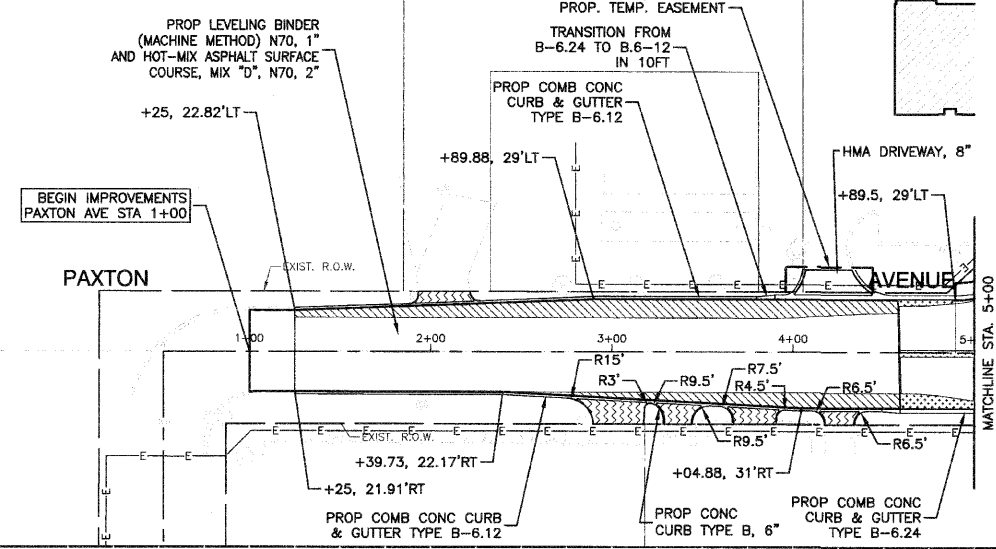
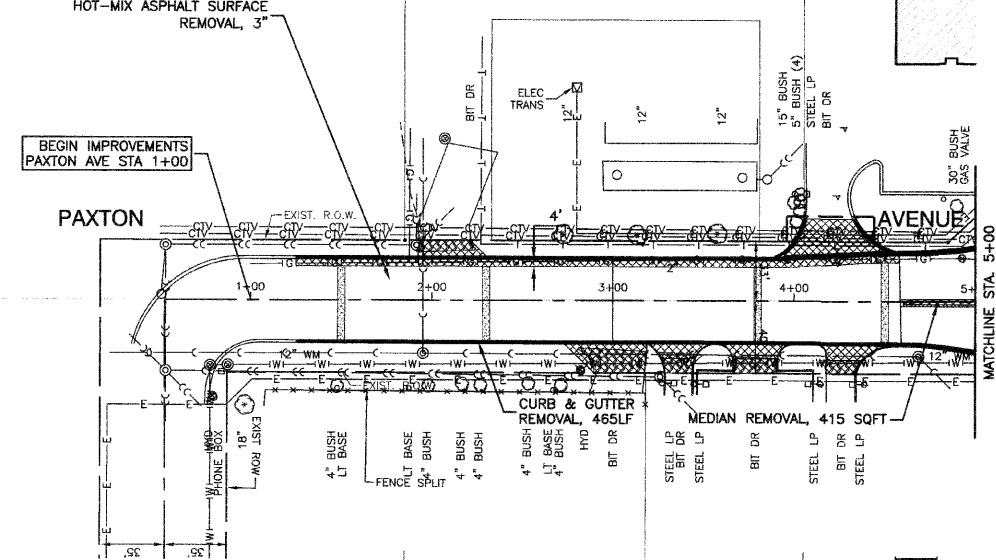


SECTION 13, TOWNSHIP 36, RANGE 14  
SECTION 24, TOWNSHIP 36, RANGE 14



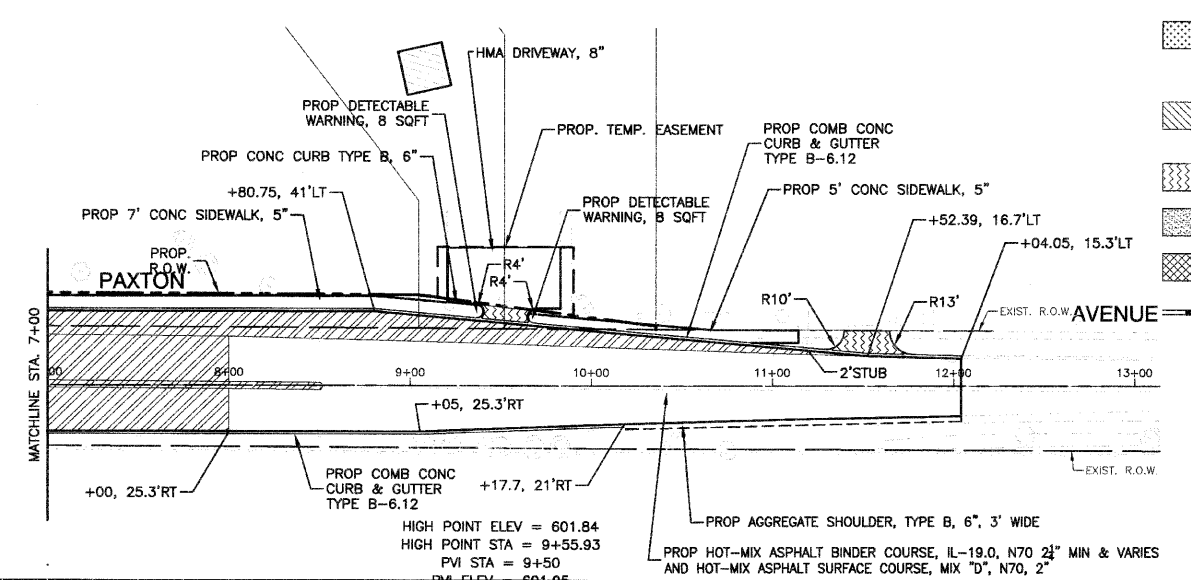
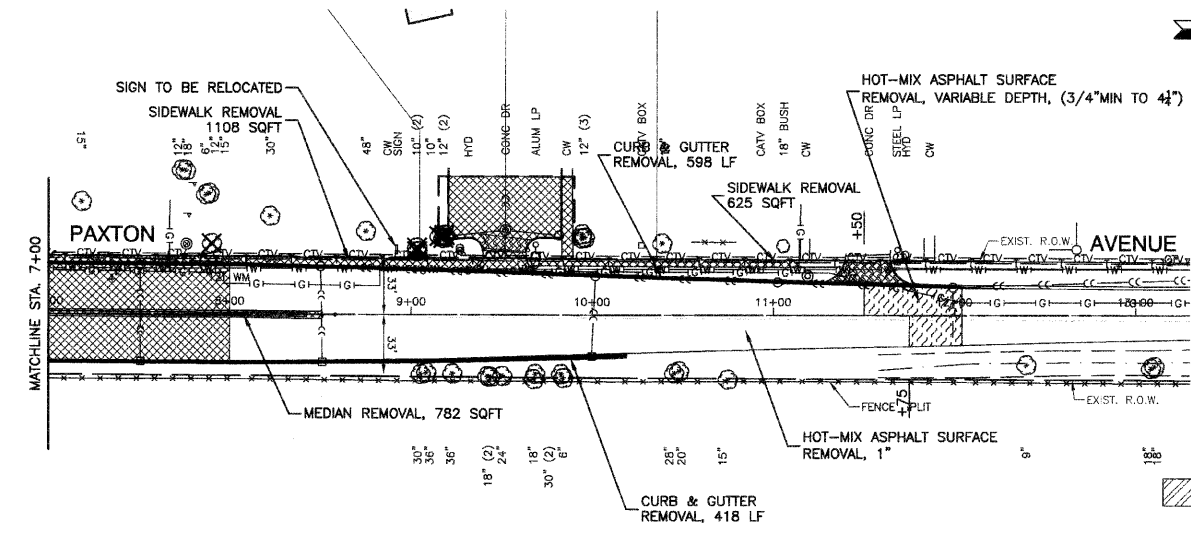
PLAN	SURVEYED	DATE
	PLOTTED	
	CHECKED	
	BY	
	NO. OF WAY CHECKED	
	NO.	
	FILE NAME	

PROFILE	SURVEYED	DATE
	PLOTTED	
	CHECKED	
	BY	
	NO. OF WAY CHECKED	
	NO.	
	FILE NAME	



US ROUTE 6 (RIVER OAKS DRIVE)

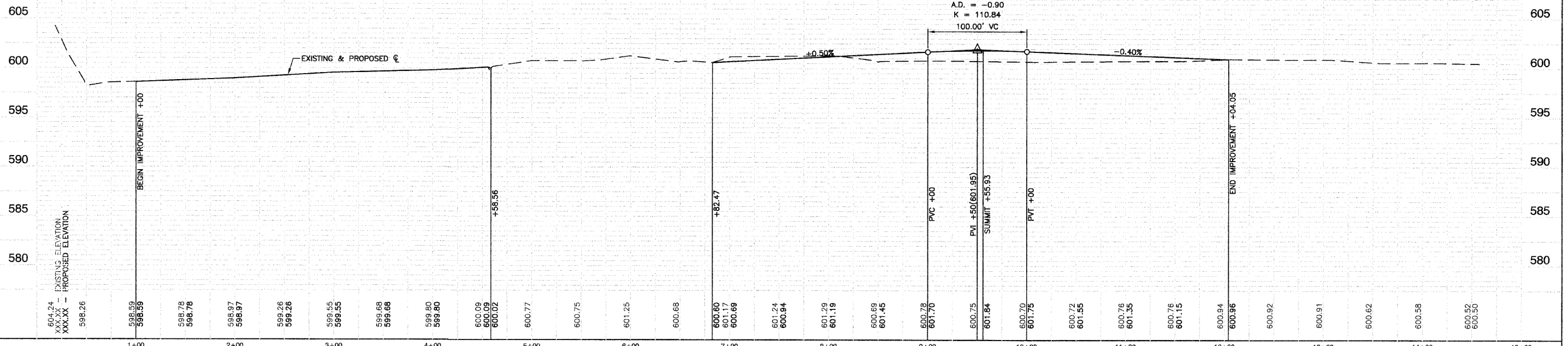
US ROUTE 6 (RIVER OAKS DRIVE)



LEGEND

- PROP SUBBASE GRANULAR MATERIAL, TYPE B, 4\"/>
- PROP SUBBASE GRANULAR MATERIAL, TYPE B, 4\"/>
- PROP SUBBASE GRANULAR MATERIAL, TYPE B, 4\"/>
- PROP. HMA DRIVEWAY, 8\"/>
- CLASS D PATCH, 10\"/>
- PAVEMENT, DRIVEWAY PAVEMENT, & SIDEWALK REMOVAL
- CURB & GUTTER REMOVAL

NOTE:  
CLASS D PATCHING FOR THE INSTALLATION OF STORM SEWER SHALL BE MADE FLUSH TO THE EXISTING PAVEMENT. AFTER ALL STORM SEWER IS INSTALLED THE ENTIRE PAVEMENT WILL BE MILLED 3\"/>



FILE NAME = 08328-PLFR-01 - PLFR02	USER NAME =	DESIGNED - RW	REVISED -	STATE OF ILLINOIS DEPARTMENT OF TRANSPORTATION	US ROUTE 6 (RIVER OAKS DRIVE) AT PAXTON AVENUE INTERSECTION IMPROVEMENT EXISTING & PROPOSED PLAN & PROFILE				F.A.P. R.T.E. = 351	SECTION = 06-00138-00-CH	COUNTY = COOK	TOTAL SHEETS = 044	SHEET NO. = 008
	PLOT SCALE =	DRAWN - RG/PS	REVISED -		SCALE: H 1"=50' V 1"=5'				SHEET NO. 008 OF 044 SHEETS	STA. TO STA.	FED. ROAD DIST. NO. 1	ILLINOIS	FED. AID PROJECT = HD-M-9003(258)
	PLOT DATE = 01-25-10	CHECKED - AG	REVISED -		CONTRACT NO. 63268								