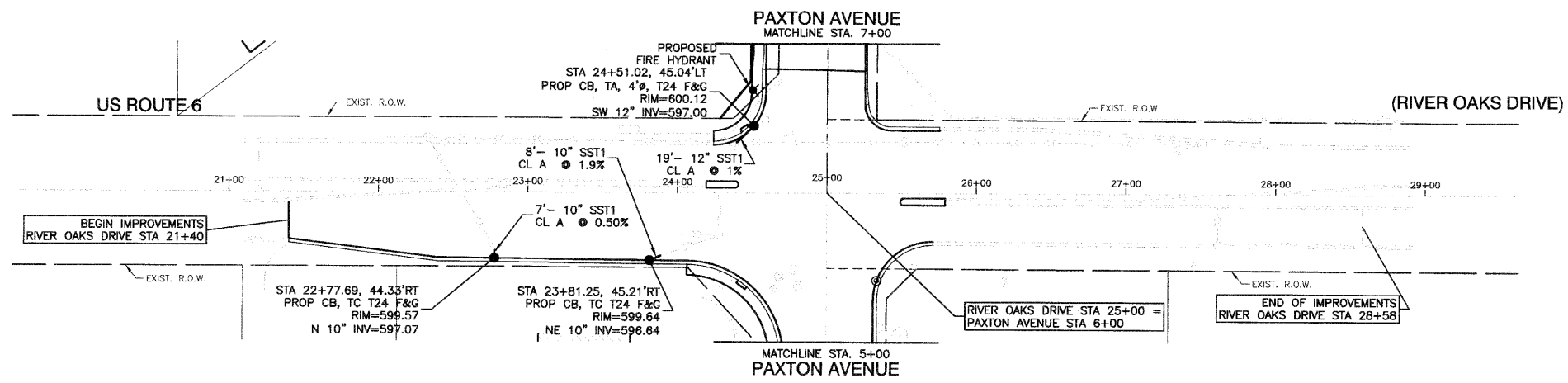
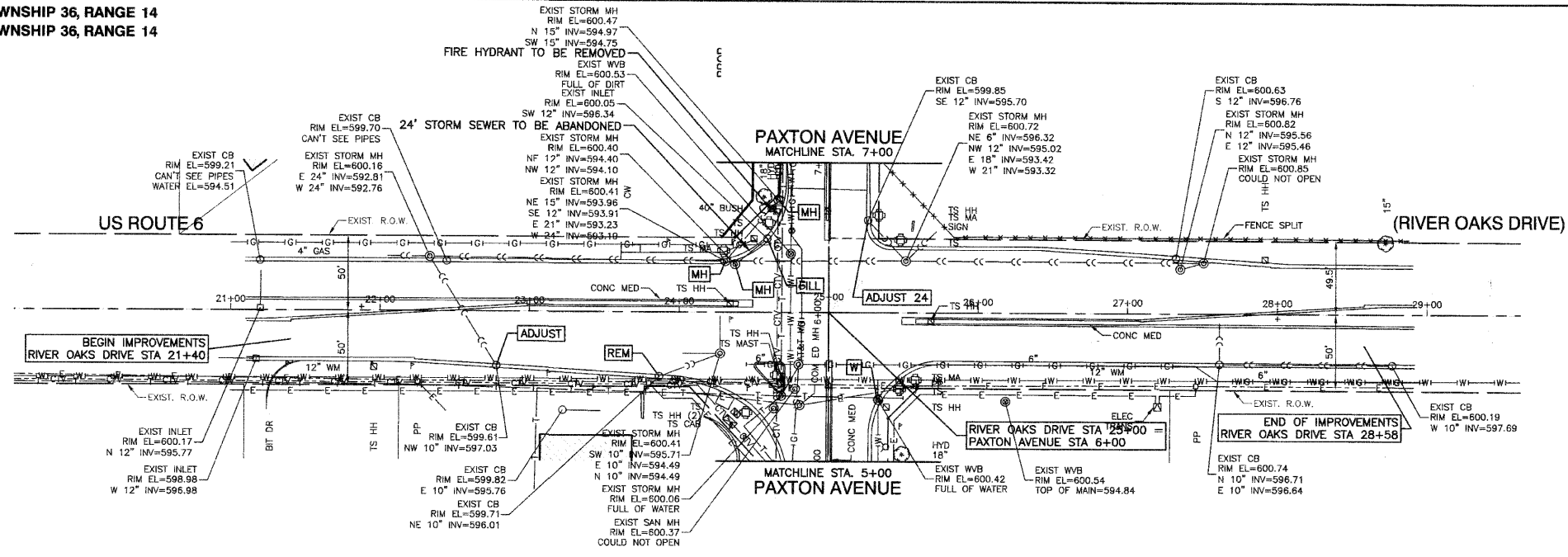
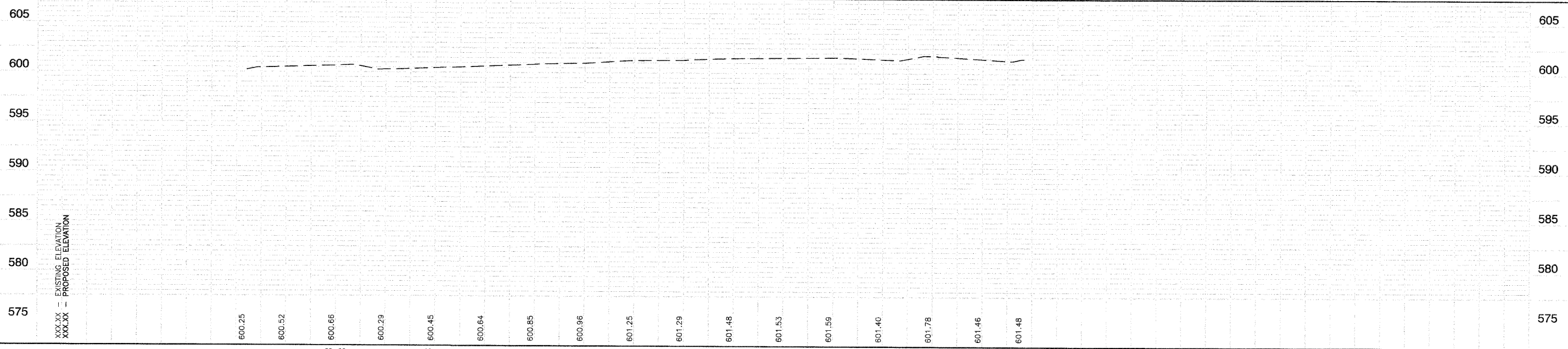


SECTION 13, TOWNSHIP 36, RANGE 14
SECTION 24, TOWNSHIP 36, RANGE 14



- LEGEND**
- ADJUST 24** CATCH BASIN TO BE ADJUSTED W/ NEW TYPE 24 FRAME AND GRATE
 - ADJUST** CATCH BASIN TO BE ADJUSTED W/ NEW TYPE 1 FRAME, OPEN OR CLOSED LID
 - CB23** CATCH BASIN TO BE ADJUSTED W/ NEW TYPE 23 FRAME & GRATE
 - MH** MANHOLE TO BE ADJUSTED W/ NEW TYPE 1 FRAME, CLOSED LID
 - V** VALVE VAULT TO BE ADJUSTED W/ NEW TYPE 1 FRAME, CLOSED LID
 - REM** INLET OR CATCH BASIN TO BE REMOVED
 - FILL** CATCH BASIN TO BE FILLED



DATE	
BY	
SURVEYED	
PLOTTED	
REVISIONS	
DATE	
BY	
NOTE BOOK	
NO.	
FILE NAME	

DATE	
BY	
SURVEYED	
PLOTTED	
REVISIONS	
DATE	
BY	
NOTE BOOK	
NO.	
FILE NAME	

FILE NAME = 08328 PLPR 01 - UTIL01	USER NAME =	DESIGNED -- RW	REVISED --	STATE OF ILLINOIS DEPARTMENT OF TRANSPORTATION	US ROUTE 6 (RIVER OAKS DRIVE) AT PAXTON AVENUE INTERSECTION IMPROVEMENT EXISTING & PROPOSED DRAINAGE & UTILITIES				F.A.P. RTE. = 351	SECTION = 06-00139-00-CH	COUNTY = COOK	TOTAL SHEETS = 044	SHEET NO. = 013
	PLOT SCALE =	CHECKED -- RW	REVISED --		SCALE: H 1"=50' V 1"=5'				SHEET NO. 013 OF 044 SHEETS		STA. TO STA.	CONTRACT NO. 63268	
	PLOT DATE = 01-25-10	DRAWN -- RG/PS	REVISED --		FED. ROAD DIST. NO. 1				ILLINOIS		FED. AID PROJECT HD-M-9003(258)		
		CHECKED -- AG	REVISED --										