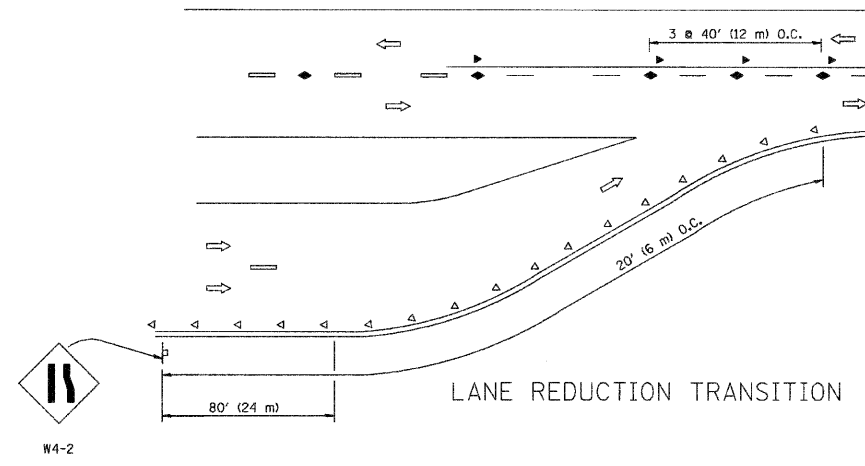
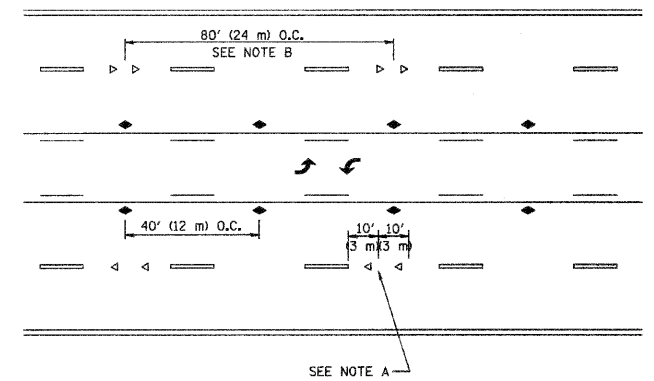


\*\*\* REDUCE TO 40' (12 m) O.C. ON CURVES WITH POSTED OR ADVISORY SPEED 45 M.P.H. (70 km/h) OR LESS.

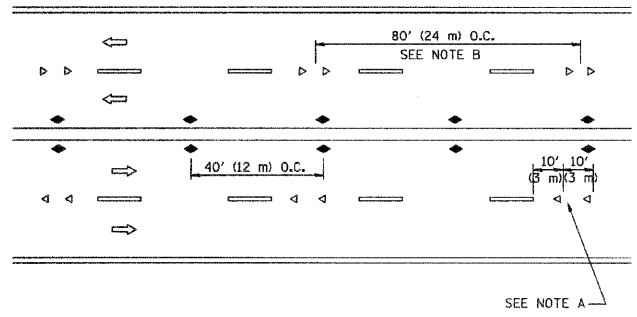
TWO-LANE/TWO-WAY



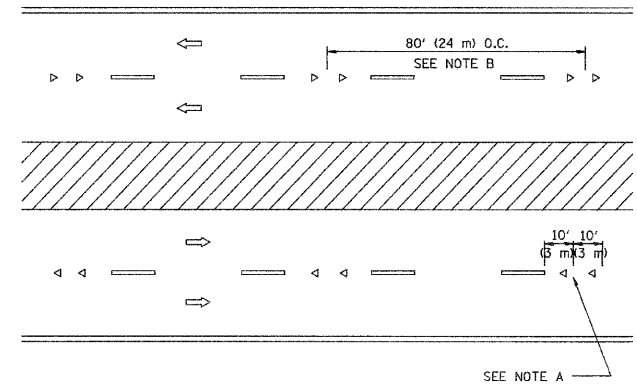
LANE REDUCTION TRANSITION



TWO-WAY LEFT TURN



MULTI-LANE/UNDIVIDED



MULTI-LANE/DIVIDED

GENERAL NOTES

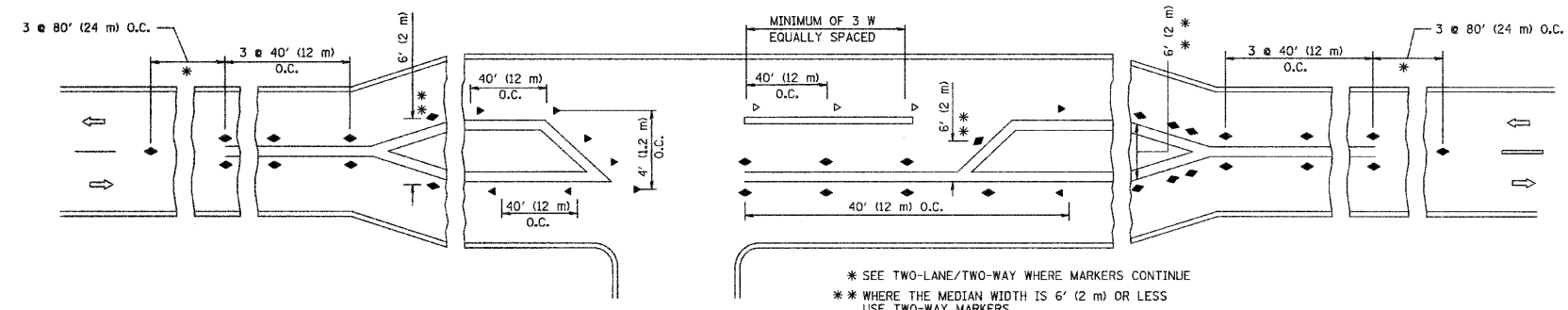
1. MARKERS USED WITH DASHED LINES SHALL BE CENTERED IN THE GAP BETWEEN SEGMENTS.
2. MARKERS USED ADJACENT TO SOLID LINES SHALL BE OFFSET 2 TO 3 (50 TO 75) TOWARD TRAFFIC AS SHOWN.
3. MARKERS THROUGH TANGENTS LESS THAN 500' (150 m) IN LENGTH BETWEEN CURVES SHALL BE INSTALLED AT THE LESSER OF THE TWO CURVE SPACINGS.

SYMBOLS

- YELLOW STRIPE
- WHITE STRIPE
- ◀ ONE-WAY AMBER MARKER
- ◁ ONE-WAY CRYSTAL MARKER (W/O)
- ◆ TWO-WAY AMBER MARKER

LANE MARKER NOTES

- A. USE DOUBLE LANE LINE MARKERS SPACED AS SHOWN.
- B. REDUCE TO 40' (12 m) O.C. ON CURVES WHERE ADVISORY SPEEDS ARE 10 M.P.H (20 km/h) LOWER THAN POSTED SPEEDS.



\* SEE TWO-LANE/TWO-WAY WHERE MARKERS CONTINUE  
 \*\* WHERE THE MEDIAN WIDTH IS 6' (2 m) OR LESS USE TWO-WAY MARKERS.

LEFT TURN

All dimensions are in Inches (millimeters) unless otherwise shown.

FILE NAME = 08328-DTL5-07 - TC-11	USER NAME = drivakoegn	DESIGNED —	REVISED — T. RAMMACHER 09-19-94	STATE OF ILLINOIS DEPARTMENT OF TRANSPORTATION	TYPICAL APPLICATIONS RAISED REFLECTIVE PAVEMENT MARKERS (SNOW-FLOW RESISTANT)	F.A.P. RTE. = 351	SECTION = 08-00139-00-CH	COUNTY = COOK	TOTAL SHEETS = 044	SHEET NO. = 030
	PLOT SCALE = 50,000' / IN.	DRAWN —	REVISED — T. RAMMACHER 03-12-99			TC-11		CONTRACT NO. 63268		
	PLOT DATE = 9/9/2009	CHECKED —	REVISED — T. RAMMACHER 01-06-00			FED. ROAD DIST. NO. 1		ILLINOIS		FED. AID PROJECT = HD-M-9003(258)
			REVISED — C. JUCIUS 09-09-09			SCALE:	SHEET NO. 030 OF 044 SHEETS	STA. TO STA.		