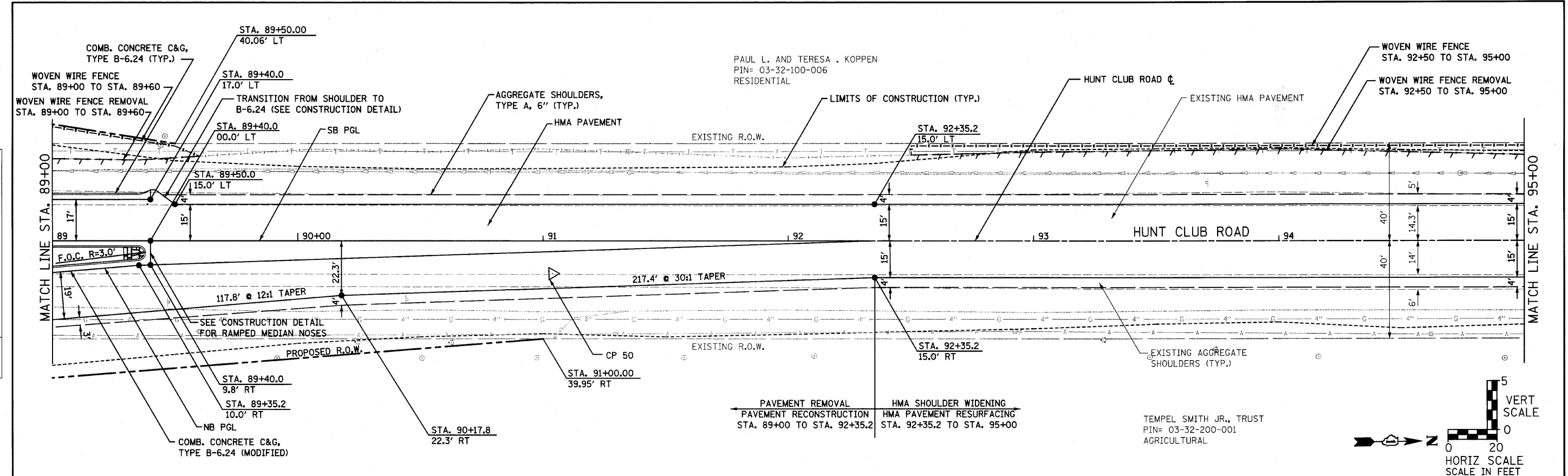


DATE	
BY	
REVIEWED	
NOTED	
PLANNED	
NO. 1	
NO. 2	
NO. 3	
NO. 4	
NO. 5	
NO. 6	
NO. 7	
NO. 8	
NO. 9	
NO. 10	

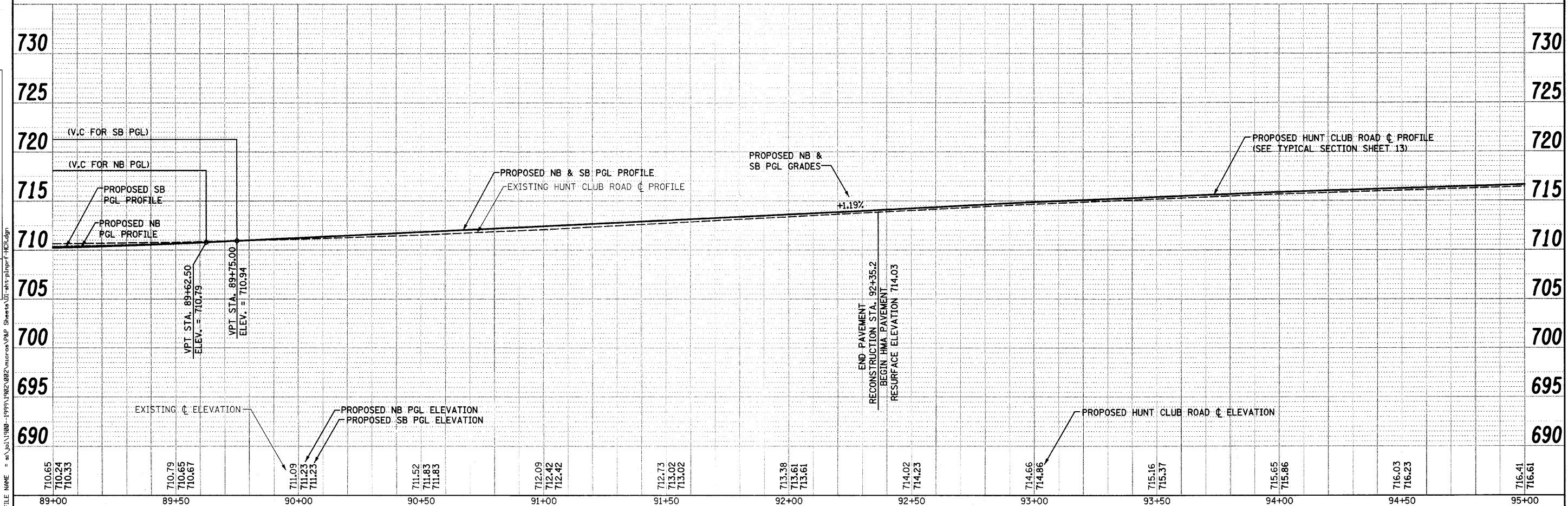
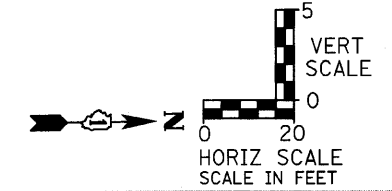
DATE	
BY	
REVIEWED	
NOTED	
PLANNED	
NO. 1	
NO. 2	
NO. 3	
NO. 4	
NO. 5	
NO. 6	
NO. 7	
NO. 8	
NO. 9	
NO. 10	



PAVEMENT REMOVAL  
PAVEMENT RECONSTRUCTION  
STA. 89+00 TO STA. 92+35.2

HMA SHOULDER WIDENING  
HMA PAVEMENT RESURFACING  
STA. 92+35.2 TO STA. 95+00

TEMPEL SMITH JR., TRUST  
PIN= 03-32-200-001  
AGRICULTURAL



89+00	89+50	90+00	90+50	91+00	91+50	92+00	92+50	93+00	93+50	94+00	94+50	95+00
710.65 710.24 710.33	710.79 710.65 710.67	711.09 711.23 711.23	711.52 711.63 711.63	712.09 712.42 712.42	712.73 713.02 713.02	713.38 713.61 713.61	714.02 714.23	714.66 714.86	715.16 715.37	715.65 715.86	716.03 716.23	716.41 716.61

1170 SOUTH HOUBOLT ROAD  
JOLIET, ILLINOIS 60431  
(815) 744-4200

USER NAME = sa-on  
DESIGNED - MAG  
CHECKED - RKK  
DRAWN - VLF  
CHECKED - RKK

REVISIONS:  
REVISED -  
REVISED -  
REVISED -  
REVISED -

PLOT SCALE = 28.0000' / IN.  
PLOT DATE = 4/1/2010

STATE OF ILLINOIS  
DEPARTMENT OF TRANSPORTATION

HUNT CLUB ROAD PLAN AND PROFILE  
SCALE: AS SHOWN | SHEET NO. 07 OF SHEETS | STA. 89+00 TO STA. 95+00

F.A. RTE.	SECTION	COUNTY	TOTAL SHEETS	SHEET NO.
2661	02-00076-13-CH	LAKE	177	38
CONTRACT NO. 63457				

FED. ROAD DIST. NO. 1 ILLINOIS FED. AID PROJECT