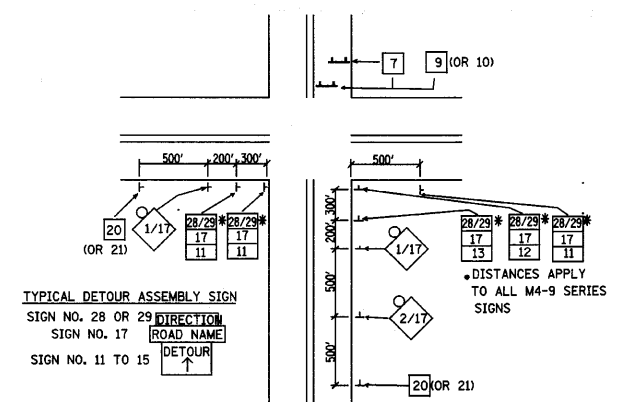
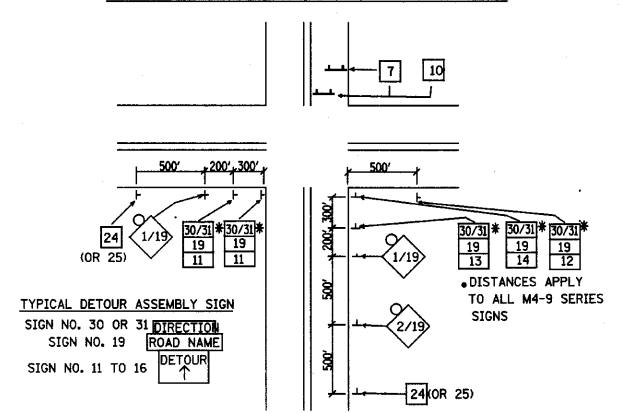


TYPICAL INTERSECTION AT POINT OF HUNT CLUB ROAD DETOUR



TYPICAL INTERSECTION AT POINT OF WADSWORTH ROAD DETOUR



SPECIAL DETOUR NOTES:

1. THE CONTRACTOR SHALL PAY PARTICULAR ATTENTION TO THE DETOUR GENERAL NOTES, SEE SHEET 51 FOR THE DETOUR GENERAL NOTES.
2. SEE SHEET 51 FOR INFORMATION ON THE DESIGN AND LOCATION OF THE DETOUR INFORMATION SIGNS.
3. A MINIMUM OF 10 TYPE III BARRICADES WILL BE NEEDED FOR THIS DETOUR AND ROAD CLOSURE. SEE DETOUR GENERAL NOTE 10.
4. PRIOR TO AND AT THE CONCLUSION OF THIS DETOUR PLAN, THE TRAFFIC CONTROL PLAN SHOWN ON SHEET 48 SHALL BE IN EFFECT.

SCHEDULE OF QUANTITIES

SIGN NO.	SIGN TYPE	SIGN NO.
1	DETOUR 500 FT	14
2	ROAD CLOSED 1000 FT	7
3	ROAD CLOSED 1500 FT	2
4	ROAD CLOSED AHEAD	0
5	BARRICADE 500 FT	4
6	ROAD CLOSED	4
7	ROAD CLOSED MILE AHEAD LOCAL TRAFFIC ONLY	6
8	ROAD CLOSED TO THRU TRAFFIC	0
9	M4-10R (0) 4818	1
10	M4-10L (0) 4818	2
11	M4-9 (0) 3021	23
12	M4-9R (0) 3021	8
13	M4-9R (0) 3021	8
14	M4-9L (0) 3021	9
15	M4-9L (0) 3021	9
16	M4-8a (0) 2418	4
17	HUNT CLUB ROAD	SPECIAL (0) 9 VARIABLE 38
18	MILLBURN ROAD	SPECIAL (0) 9 VARIABLE 0
19	WADSWORTH ROAD	SPECIAL (0) 9 VARIABLE 35
20	N.E. HUNT CLUB RD CLOSED TO THRU TRAFFIC USE US 48	SPECIAL (0) 6030 3
21	S.E. HUNT CLUB RD CLOSED TO THRU TRAFFIC USE US 48	SPECIAL (0) 6030 4
22	N.E. MILLBURN RD CLOSED TO THRU TRAFFIC USE STEARNS SCHOOL RD	SPECIAL (0) 6030 0
23	S.E. MILLBURN RD CLOSED TO THRU TRAFFIC USE STEARNS SCHOOL RD	SPECIAL (0) 6030 0
24	E.A. MILLBURN RD CLOSED TO THRU TRAFFIC USE STEARNS SCHOOL RD	SPECIAL (0) 6030 0
25	N.E. WADSWORTH RD CLOSED TO THRU TRAFFIC USE STEARNS SCHOOL RD	SPECIAL (0) 6030 1
26	E.A. WADSWORTH RD CLOSED TO THRU TRAFFIC USE STEARNS SCHOOL RD	SPECIAL (0) 6030 3
27	S.E. WADSWORTH RD CLOSED TO THRU TRAFFIC USE STEARNS SCHOOL RD	SPECIAL (0) 6030 3
28	WEST	M3-1 (0) 2412 13
29	EAST	M3-3 (0) 2412 17
30	EAST	M3-2 (0) 2412 12
31	WEST	M3-4 (0) 2412 15
32	TEMPLE LIGHTNING FARM OPEN DURING CONSTRUCTION	SPECIAL (0) 6030 2

FILE NAME = w:\vol1\9800-1999\1982\082\micro\plan sheets\Detour plan.dgn

STRAND ENGINEERS
1170 SOUTH HOUBOLT ROAD
JOLIET, ILLINOIS 60431
(815) 744-4200

USER NAME = sar-on	DESIGNED - VLF	REVISED -
PLOT SCALE = 28.0000' / IN.	DRAWN - VLF	REVISED -
PLOT DATE = 4/1/2010	CHECKED - MAG	REVISED -
	DATE -	REVISED -

STATE OF ILLINOIS
DEPARTMENT OF TRANSPORTATION

HUNT CLUB RD/WADSWORTH RD
DETOUR II PLAN
SCALE: N.T.S. SHEET NO. OF SHEETS STA. N/A TO STA. N/A

F.A.U. RTE.	SECTION	COUNTY	TOTAL SHEETS	SHEET NO.
2661	02-00076-13-CH	LAKE	177	49
CONTRACT NO. 63457				
FED. ROAD DIST. NO. 1 ILLINOIS FED. AID PROJECT				