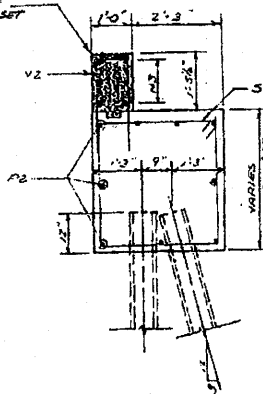


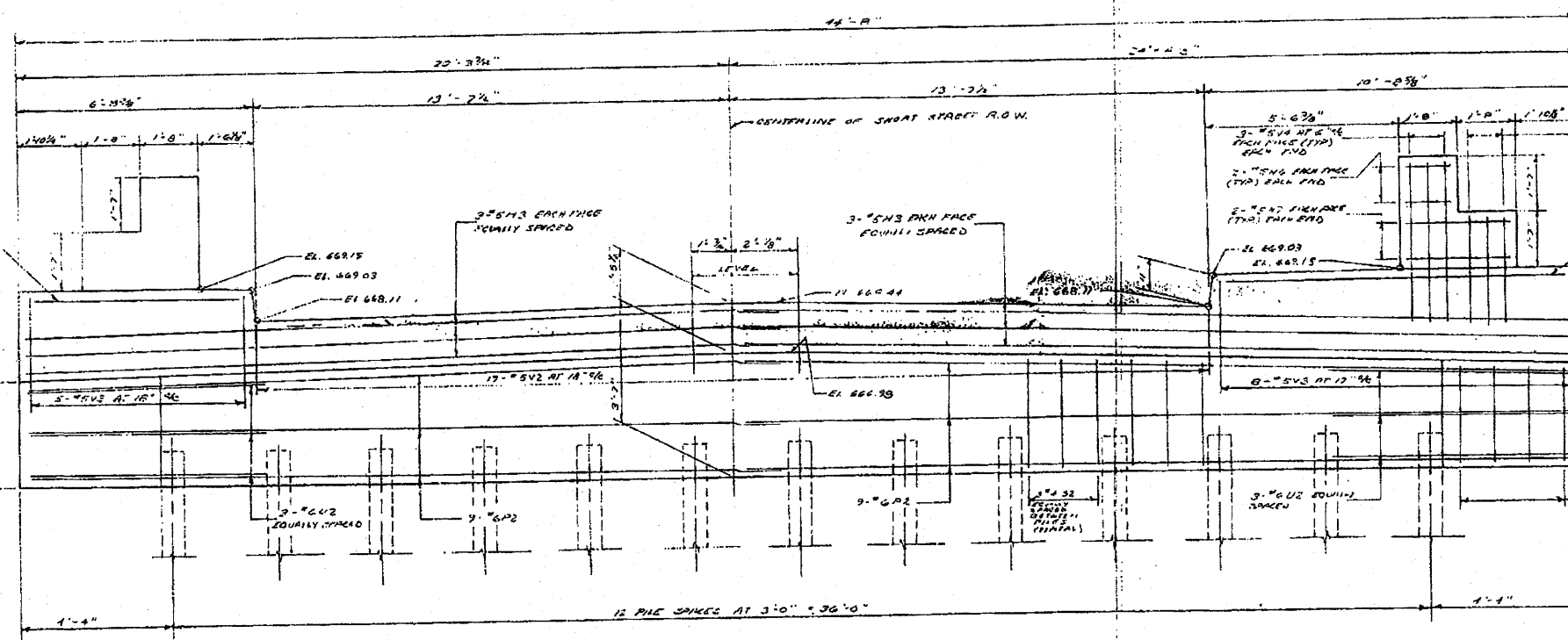
PLAN

NOTE: SHADED AREA TO BE CAST & PLACED AFTER BEAMS HAVE BEEN SET IN PLACE

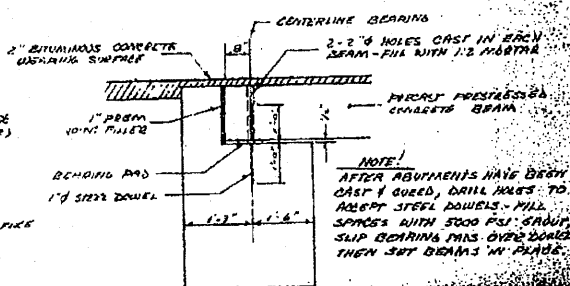


TYPICAL CROSS SECTION

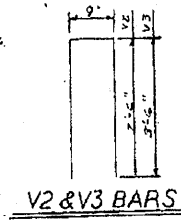
S2 BARS



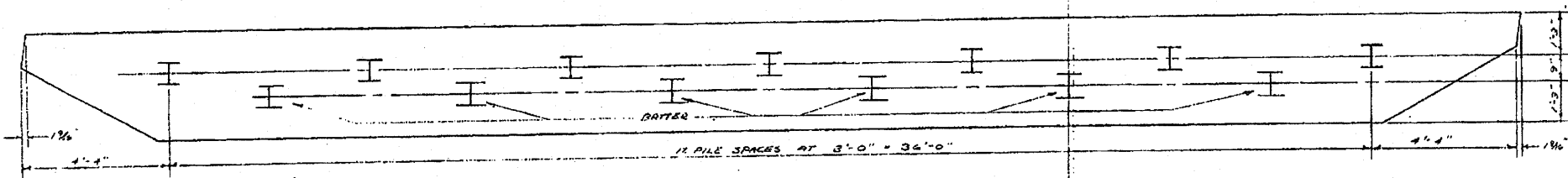
ELEVATION - WEST ABUTMENT  
(EAST ABUTMENT OPPOSITE HAND)



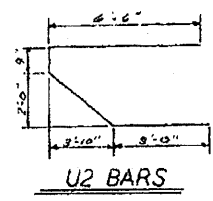
DETAIL OF FIXED JOINT AT ABUTMENTS



V2 & V3 BARS



PILE PLAN - WEST ABUTMENT  
(EAST ABUTMENT OPPOSITE HAND)



U2 BARS

BILL OF REINFORCEMENT				
BAR NO.	SIZE	LENGTH	SHAPE	
H3	24	5	22'-8"	ABUTMENTS
H4	4	5	10'-0"	
H5	4	5	6'-0"	
H6	16	5	1'-4"	
H7	16	5	3'-0"	
P2	36	6	22'-8"	
S2	88	4	10'-4"	
U2	12	6	14'-6"	ABUTMENTS
V2	38	5	5'-9"	
V3	26	5	7'-9"	
V4	24	5	4'-6"	
V5	24	5	3'-0"	

ABUTMENT QUANTITIES	
CLASS X CONCRETE	46.5 CU. YDS.
REINFORCEMENT BARS	3610 LBS.

ABUTMENTS		
SCALE: 1/4" = 1'-0"	APPROVED BY: _____	DATE: 11-03-73
BRANICKI - VIRGILIO & ASSOCIATES 22 ROOSEVELT SQUARE, CHICAGO, ILLINOIS		
DRAWN BY: _____		CHECKED BY: _____
SHEET 4 OF 6		56F-B

Added 10-13-10 Sheet 49