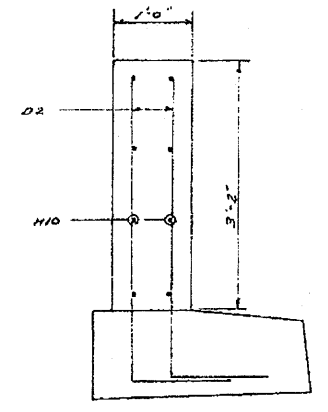
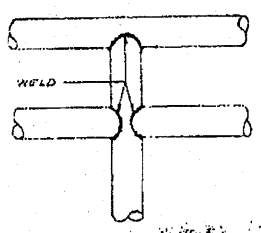


HANDRAIL ELEVATION



SECTION A-A



HANDRAIL DETAIL

D&C BARS

2'-4"	D1
3'-9"	D2
2'-4"	C1
6'-4"	D2

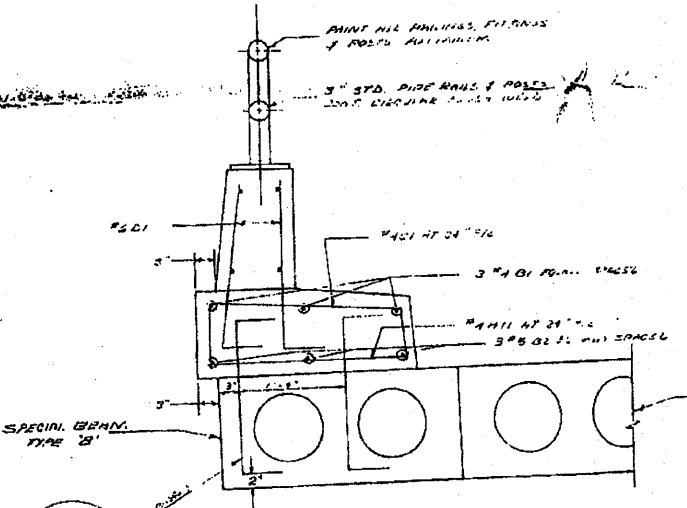
D&C BARS

BILL OF REINFORCEMENT

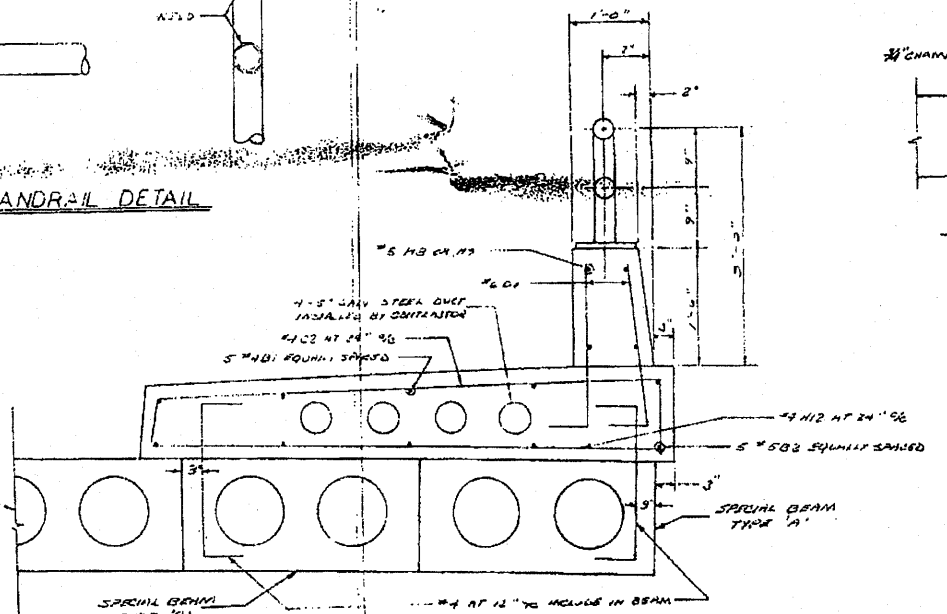
BAR NO.	SIZE	LENGTH	SHAPE
B1	36	4	23'-3"
B2	8	5	23'-4"
C1	48	4	3'-9"
C2	48	4	7'-10"
D1	360	6	2'-10"
D2	24	6	6'-0"
H8	32	6	14'-8"
H9	16	5	14'-1"
H10	32	4	1'-9"
H11	48	4	2'-4"
H12	48	4	6'-4"

CURB & PARAPET QUANTITIES

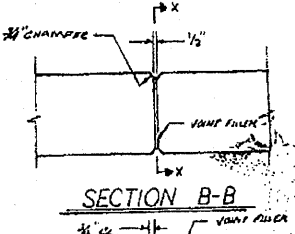
CLASS X CONCRETE	45.8 CU. YDS.
REINFORCEMENT BARS	3654 LBS.



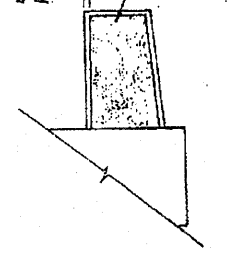
SECTION SOUTH CURB



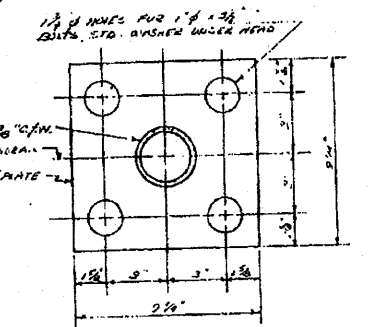
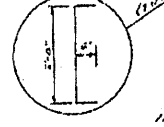
SECTION NORTH CURB



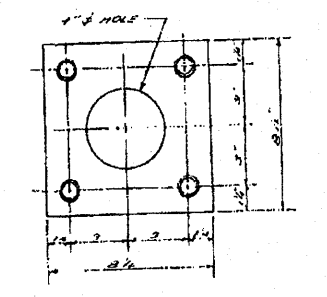
SECTION B-B



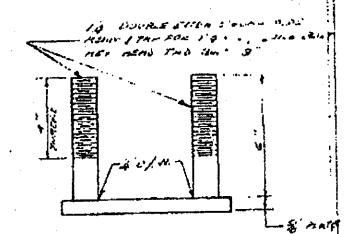
SECTION X-X



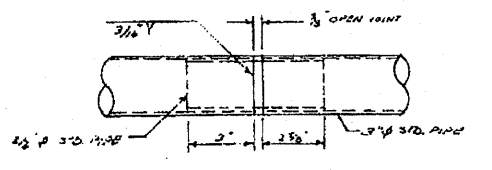
HANDRAIL BASE PLATE



ANCHOR DEVICE-PLAN



ANCHOR DEVICE-SIDE



SLIP JOINT

CURB & PARAPET

SCALE:	NUMBER OF SHEETS:	REVISIONS:
DATE: 11-19-73	BY: BARRYCART-VIRGILIO & ASSOCIATES	PROJECT: 22 NORTH BRADWAY
DESIGNER: DCS PHINES, ILLINOIS		DRAWING NUMBER: 56 E - B
SHEET 5 OF 6		

Added 10-13-70 Sheet 50