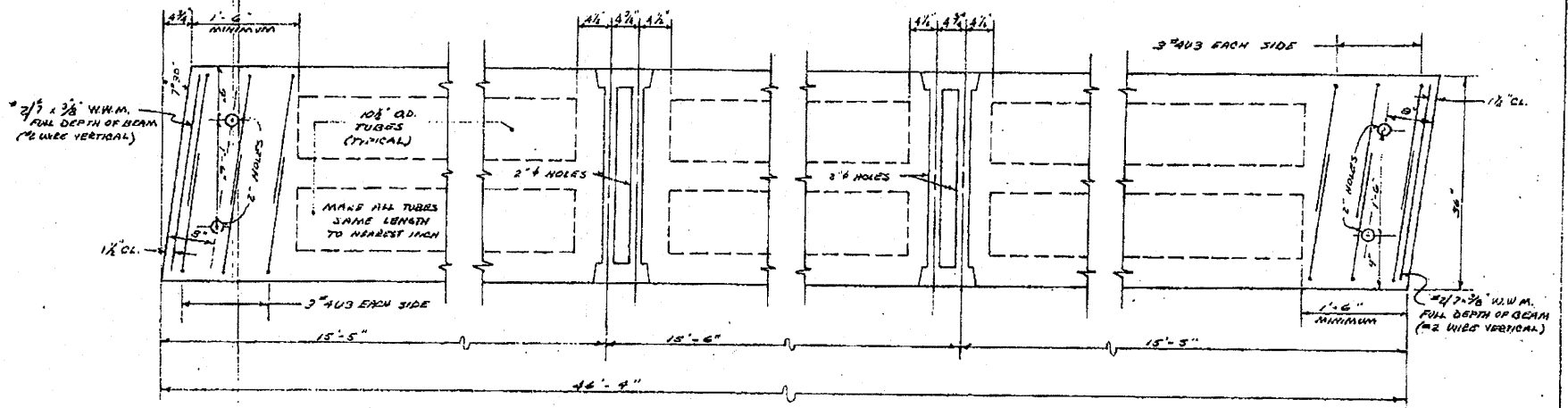
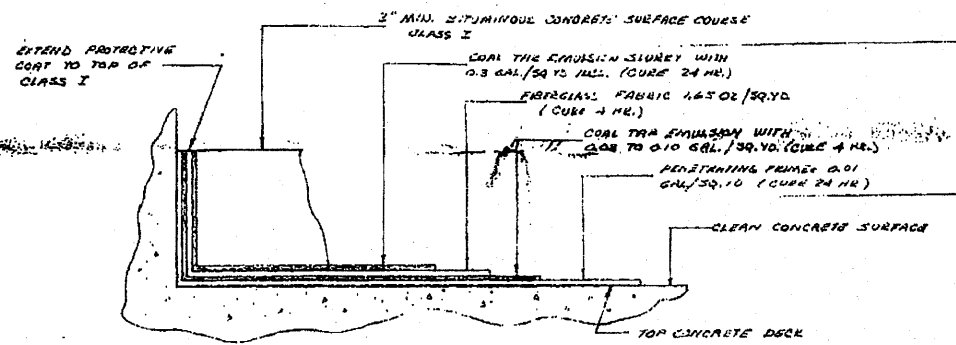


TYPICAL SECTION THRU DECK BEAM

NOTE: PRESTRESS MANUFACTURER TO FURNISH DESIGN CALCULATIONS TO CONSULTING ENGINEER FOR FURTHER REVIEW. PRESTRESS MANUFACTURER TO BE RESPONSIBLE FOR ALL PRESTRESS BEAMS. PROVIDE LIFTING LOOPS IN ACCORDANCE WITH THE STATE OF MARYLAND BRIDGE STANDARDS.

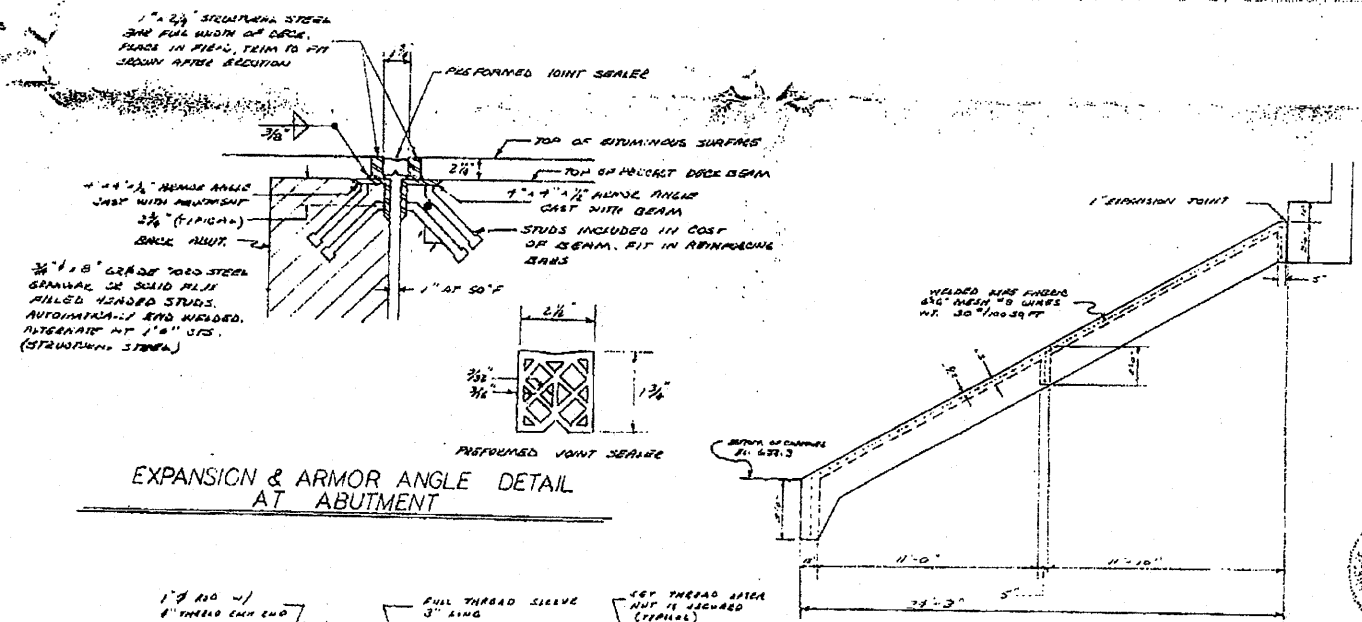


DETAIL OF REINFORCEMENT & TRANSVERSE TIE PLACEMENT

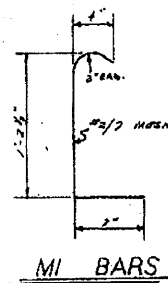


DECK SURFACING

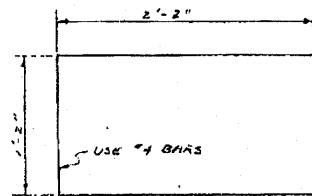
TO BE PAID FOR AS COAL TAR INTERLAYER PROTECTIVE COATING



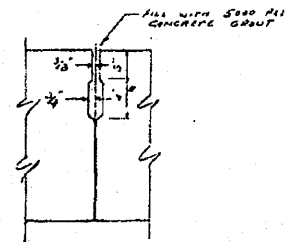
EXPANSION & ARMOR ANGLE DETAIL AT ABUTMENT



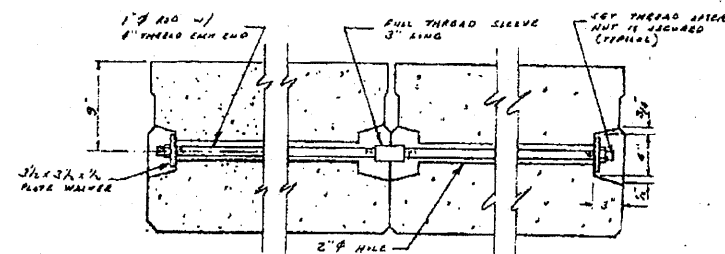
MI BARS



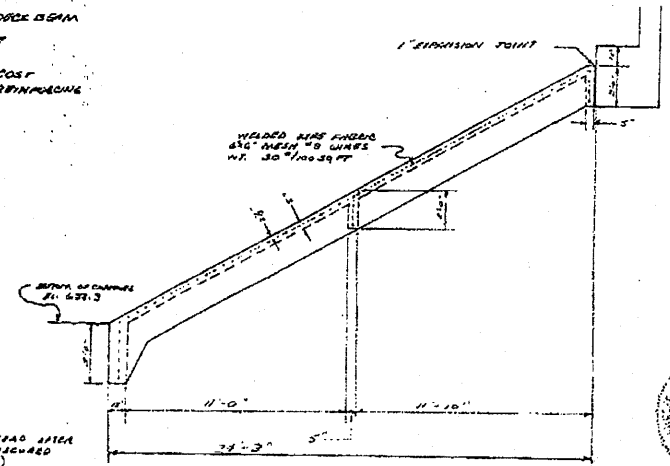
U3 BARS



SHEAR KEY DETAIL



TYPICAL TIE ASSEMBLY



SLOPE WALL

DETAILS		
SCALE:	APPROVED BY:	DRAWN BY: CO
DATE: 11-22-73		REVISED: 2-11-74
BRANFORD - VIRGILIO & ASSOCIATES 22 NORTH BRADLUM PO BOX 1100, BALTIMORE, MARYLAND		
SHEET 6 OF 6		GEARING NUMBER SGE-8

Added 10-13-10 Sheet 51