

INDEX OF SHEETS

SHEET NO.	DESCRIPTION
1	COVER SHEET
2	INDEX OF SHEETS, HIGHWAY STANDARDS AND GENERAL NOTES
3-5	SUMMARY OF QUANTITIES
6	TYPICAL SECTIONS
7	SCHEDULES OF QUANTITIES
8	ALIGNMENT, TIES, AND BENCHMARKS
9	ROADWAY PLAN & PROFILE
10	DETOUR PLAN
11-15	EROSION AND SEDIMENT CONTROL
16	DRAINAGE AND UTILITIES
17	RIGHT-OF-WAY PLAT
18	PAVEMENT MARKING AND LANDSCAPING
19-21	ELECTRICAL PLANS
22-39	STRUCTURAL PLANS
40-43	DISTRICT DETAILS
44-45	CROSS SECTIONS
46-51	EXISTING STRUCTURE PLANS <i>Added 10-13-10</i>

HIGHWAY STANDARDS

000001-05	STANDARD SYMBOLS, ABBREVIATIONS, AND PATTERNS
001001-02	AREAS OF REINFORCEMENT REBARS
280001-05	TEMPORARY EROSION CONTROL SYSTEMS
420001-07	PAVEMENT JOINTS
420401-08	BRIDGE APPROACH PAVEMENT CONNECTOR
515001-03	NAME PLATE FOR BRIDGES
542301-02	PRECAST REINFORCED CONCRETE FLARED END SECTION
601101-01	CONCRETE HEADWALL FOR PIPE DRAIN
602001-01	CATCH BASIN TYPE A
602011-01	CATCH BASIN TYPE C
604016-02	FRAME AND GRATE TYPE 4
606001-04	CONCRETE CURB TYPE B AND COMBINATION CONCRETE CURB AND GUTTER
701801-04	LANE CLOSURE, MULTILANE 1W OR 2W CROSSWALK OR SIDEWALK CLOSURE
701901-01	TRAFFIC CONTROL DEVICES
720001-01	SIGN PANEL MOUNTING DETAILS
720006-02	SIGN PANEL ERECTION DETAILS
720011-01	METAL POSTS FOR SIGNS, MARKERS & DELINEATORS
729001-01	APPLICATIONS OF TYPES A & B METAL POSTS (FOR SIGNS & MARKERS)
780001-02	TYPICAL PAVEMENT MARKINGS
781001-03	TYPICAL APPLICATIONS RAISED REFLECTIVE PAVEMENT MARKERS

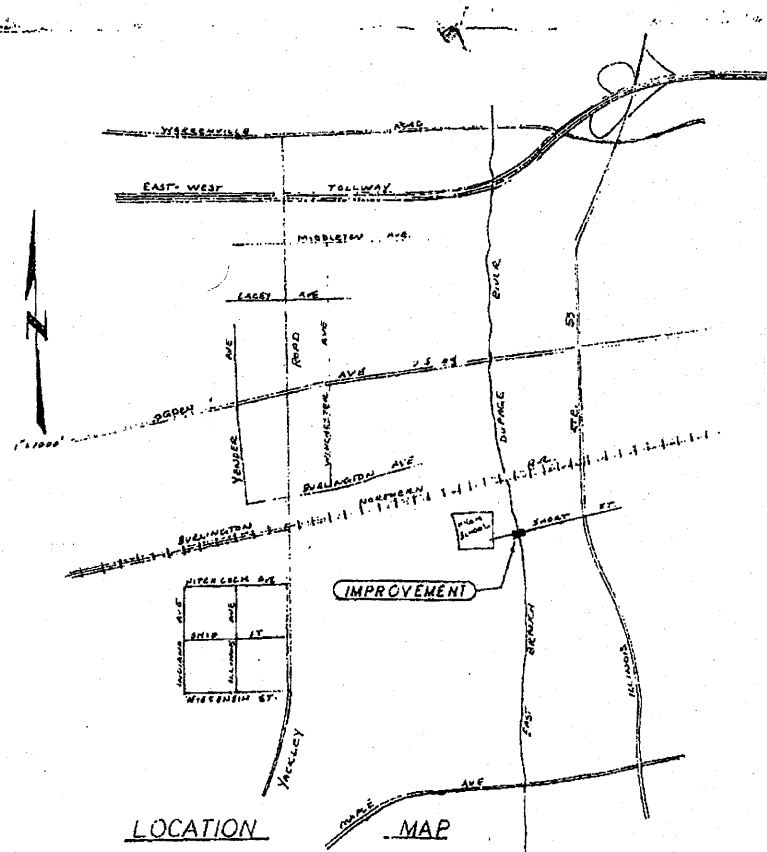
GENERAL NOTES

- BEFORE STARTING ANY EXCAVATION, THE CONTRACTOR SHALL CALL "JULIE" AT 800-892-0123 FOR FIELD LOCATIONS OF BURIED UTILITY FACILITIES. (48 HOURS NOTIFICATION IS REQUIRED)
- THE CONTRACTOR SHALL COORDINATE CONSTRUCTION ACTIVITIES WITH UTILITY COMPANIES AND THE VILLAGE OF LISLE.
- THE CONTRACTOR WILL NOT BE ALLOWED TO SET UP A YARD OR FIELD OFFICE ON THE STATE OR VILLAGE OF LISLE PROPERTY WITHOUT WRITTEN PERMISSION FROM THE DEPARTMENT AND THE VILLAGE.
- BARRICADES: THE CONTRACTOR SHALL PROVIDE AND INSTALL TWO (2) WEIGHTED SAND BAGS ON EACH TYPE I OR TYPE II BARRICADE USED - ONE (1) WEIGHTED SAND BAG ACROSS EACH BOTTOM RAIL. ALL TYPE III BARRICADES SHALL REQUIRE A MINIMUM OF FOUR (4) SANDBAGS PER BARRICADE.
- WHEN ARTIFICIAL LIGHTING IS UTILIZED IN NIGHT OPERATIONS THE CONTRACTOR SHALL EXERCISE THE UTMOST PRECAUTIONS IN PREVENTING ADVERSE VISIBILITY TO THE MOTORING PUBLIC.
- FOR STRUCTURAL GENERAL NOTES, SEE STRUCTURAL PLANS.
- THE CONTRACTOR SHALL TRANSITION CURB AND GUTTERS AND SIDEWALKS TO MEET EXISTING AT THE LIMITS OF THE PROJECT. THE COST OF ANY TRANSITION SHALL BE INCLUDED IN THE COST OF THE RELATED ITEM OF CONSTRUCTION.
- ALL COMPENSATORY STORAGE SHALL BE OPERATIONAL PRIOR TO PLACEMENT OF FILL, STRUCTURES, OR OTHER MATERIALS IN THE REGULATORY FLOOD PLAIN. GRADING IN SPECIAL MANAGEMENT AREAS SHALL BE DONE IN SUCH A MANNER THAT THE EXISTING FLOOD PLAIN STORAGE IS MAINTAINED AT ALL TIMES.
- THE CONTRACTOR SHALL REMOVE ALL EXCESS MATERIAL AND DEBRIS FROM THE SITE.
- IT SHALL BE THE CONTRACTOR'S RESPONSIBILITY TO VERIFY ALL DIMENSIONS AND CONDITIONS EXISTING IN THE FIELD PRIOR TO CONSTRUCTION AND ORDERING MATERIALS.
- COUNTY BENCHMARK NO. L110002 LOCATED ON THE EXISTING BRIDGE SHALL NOT BE RE-SET AFTER THE BRIDGE REMOVAL. THE ENGINEER SHALL CONTACT MIKE SEMENEK OF DUPAGE COUNTY MAPS AND PLATS AT 630-407-5055 WHEN THE BENCHMARK HAS BEEN REMOVED.
- CANOEIST/KAYAKERS: THE CONTRACTOR SHALL INSTALL ADVISORY SIGN FOR THE CANOEIST/KAYAKERS AS SHOWN IN THE DETOUR PLAN. THE SIGN SHALL BE PLACED APPROXIMATELY 150 FT UPSTREAM OF THE CENTERLINE OF SHORT STREET BRIDGE OR AS DIRECTED BY THE ENGINEER. THE COST OF THE ABOVE WORK SHALL BE INCLUDED IN THE COST OF TRAFFIC CONTROL AND PROTECTION FOR TEMPORARY DETOUR.
- THE ILLINOIS DEPARTMENT OF TRANSPORTATION IS NOT THE OWNER OF RECORD FOR THIS BRIDGE. THOSE SEEKING HISTORIC, AS-BUILT OR OTHER EXISTING DOCUMENTS AND PLANS MUST CONTACT THE OWNER OF RECORD TO MAKE ARRANGEMENTS FOR ACCESS TO THIS INFORMATION.

FILE NAME =	USER NAME = pccsteche	DESIGNED - LP	REVISED - PER IDOT 07/29/10	STATE OF ILLINOIS DEPARTMENT OF TRANSPORTATION	SHORT STREET OVER EAST BRANCH DUPAGE RIVER INDEX OF SHEETS, STATE STANDARDS AND GENERAL NOTES				F.A. RTE.	SECTION	COUNTY	TOTAL SHEETS	SHEET NO.
W:\871-002 Short Phase I\CAADD_Sheets\871-002-shr-gennote.dgn		DRAWN - LP	REVISED -		SCALE: NTS	SHEET NO. 2 OF 45 SHEETS	STA. 6+24.80 TO STA. 8+33.80	ILLINOIS FED. AID PROJECT	03-00050-00-BR	DUPAGE	45	2	
PLOT SCALE = 20.0000 / IN.		CHECKED - JP	REVISED -						CONTRACT NO. 63468				
PLOT DATE = 7/31/2010		DATE - 08/02/2010	REVISED -						ILLINOIS FED. AID PROJECT BMM-8003 (676)				

IMPROVEMENT PLANS FOR SHORT STREET BRIDGE

EAST BRANCH DU PAGE RIVER
LISLE, ILLINOIS



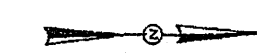
ENGINEER: BRANECKI-VIRGILIO & ASSOCIATES
72 NORTH BROADWAY
DES PLAINES, ILLINOIS 60016

OWNERS: A.P. ROSS ENTERPRISES, INC.
SCHOOL DISTRICT NO. 202
THE LISLE PARK DISTRICT

NOVEMBER 27, 1975 - 118.00
PLAS 7852 - 0
REVISED JANUARY 10, 1978
FEBRUARY 16, 1978

Sheet 46 Added 10-13-10 47119
SHEET 1 OF 6

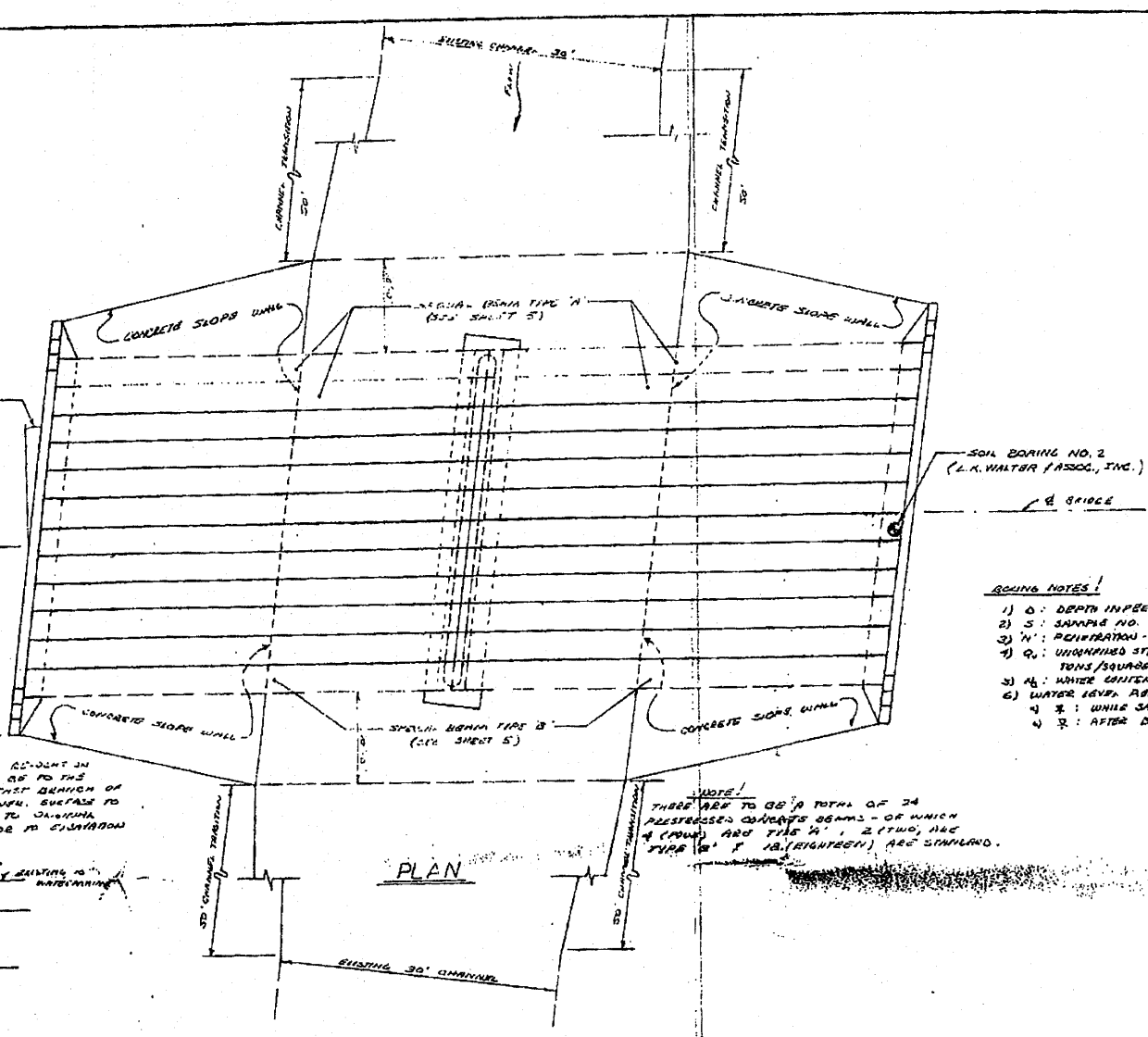
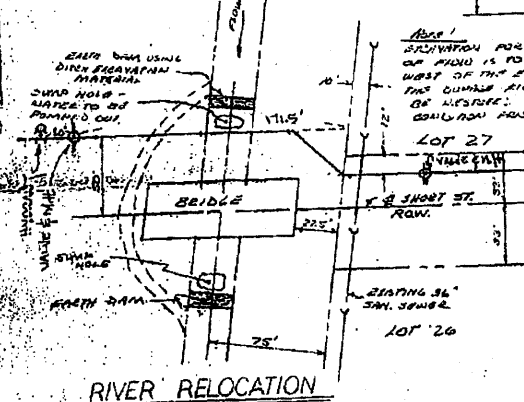
Contract Number 63468



NOTE!
7:30' SLOPE
(FINAL ADJUSTMENTS, PIER BEAM RIGID, CONCRETE PILES, ETC.)

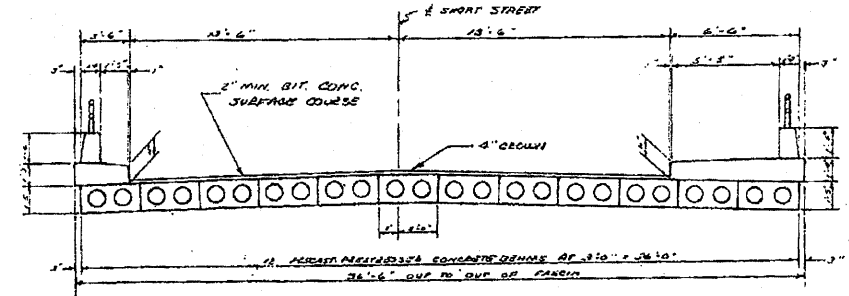
SOIL BORING NO. 1
(L.M. WALTER & ASSOC., INC.)

NOTE!
PROVISIONS MUST BE MADE TO PROTECT THE 10" WATER MAIN WHEN THE RIVER IS RELOCATED TO THE WEST DURING CONSTRUCTION.



- BORING NOTES!**
- 1) D: DEPTH IN FEET
 - 2) S: SAMPLE NO.
 - 3) W: PENETRATION - BLOW/FOOT
 - 4) Q: UNSATURATED STRAIN IN TONS/SQUARE FOOT
 - 5) A: WATER CONTENT - %
 - 6) WATER LEVEL READINGS
 - 7) #: WHILE SAMPLING
 - 8) #: AFTER BORING

NOTE!
THERE ARE TO BE A TOTAL OF 24 PRESTRESSED CONCRETE BEAMS - OF WHICH 4 (FOUR) ARE TYPE 'A', 2 (TWO) ARE TYPE 'B' & 18 (EIGHTEEN) ARE STANDARD.



CROSS SECTION
SCALE: 1/4" = 1'

LOG OF BORINGS					
BORING NO. 1 7-13-73			BORING NO. 2 7-13-73		
D	SOIL TYPE	S	W	Q	W _c
0	GROUND SURFACE ELEVATION: 660.57				
1	FILL (TYPICAL SAND)	1	8		
2		2	14	3.2	10
3	VERY TOUGH CLAY / GREY SILTY CLAY	3	19		
4		4	15		
5	MEDIUM DENSE TO DENSE				
6		6	44		
7		7	52		
8	END OF BORING				
9					
10					
11					
12					
13					
14					
15					
16					
17					
18					
19					
20					
21					
22					
23					
24					
25					
26					
27					
28					
29					
30					

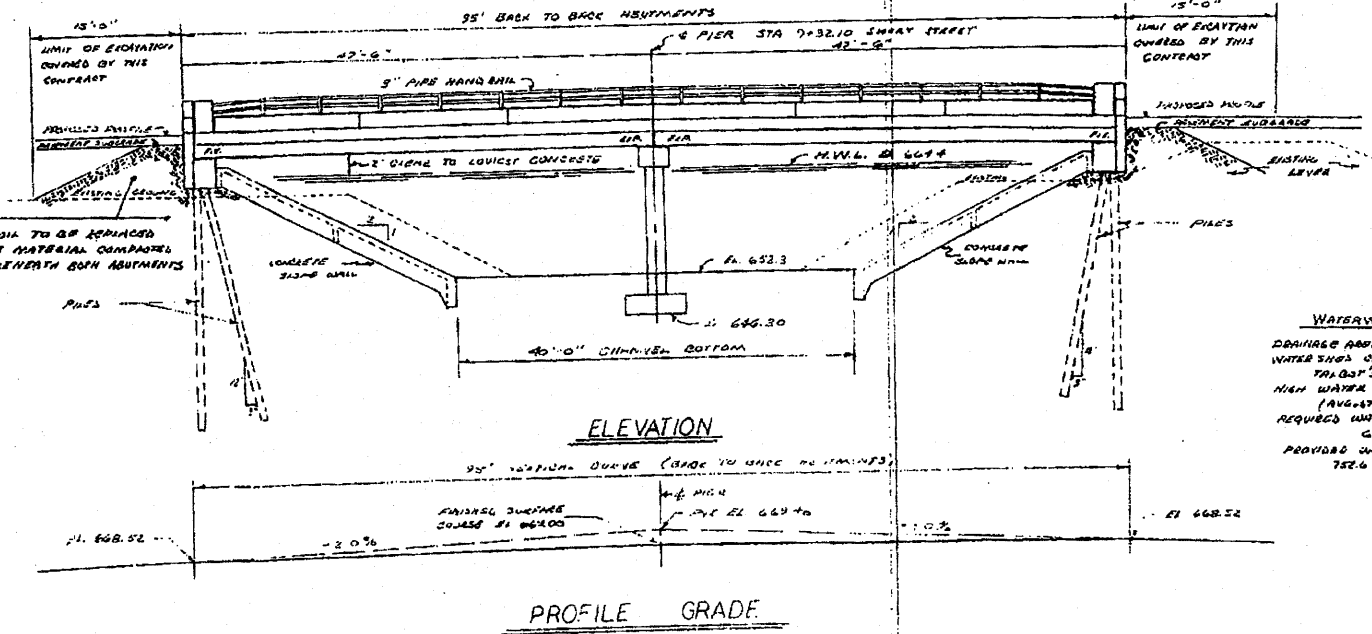
PILES

MATERIAL:
12" DP 53, 436 STEEL
12" WOOD CLASS B LUM D-25
CROSSGRAIN TO 10% EXTENSION

LENGTH:
EAST ABUTMENT
STEEL - 30'
WOOD - 35'
WEST ABUTMENT
STEEL - 25'
WOOD - 30'

(NATURAL LENGTH TO BE DETERMINED)
BY TEST PILE

LOADING:
24 TON CAPACITY
BY PILE



DESIGN DATA!

DESIGN SPECIFICATIONS, A.S.T.M. 1969 EDITION
& A.S.T.M. 1971 MIXTURE SPECIFICATIONS

DESIGN LOAD: 15'-15'-512

DESIGN STRESSES:
CONCRETE -
f_c = 3000 PSI
f_t = 1400 PSI
f_s = 70 PSI
f_s = 0

PRESTRESSED CONCRETE BEAMS -
f_c = 5000 PSI
f_t = 4000 PSI
f_s = 2000 PSI

REINFORCING STEEL, DEFORMED
f_s = 20,000 PSI
f_s = 40,000 PSI

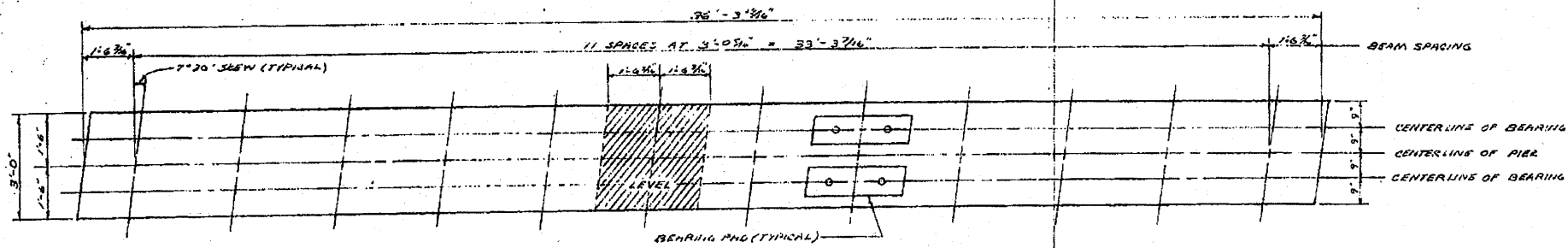
PRESTRESSING STEEL - 7/16" STRANDS
f_s = 248,000 PSI
f_s = 173,100 PSI (INITIAL FORCE)
f_s = 173,100 PSI (100% LOSS)

GENERAL NOTES!

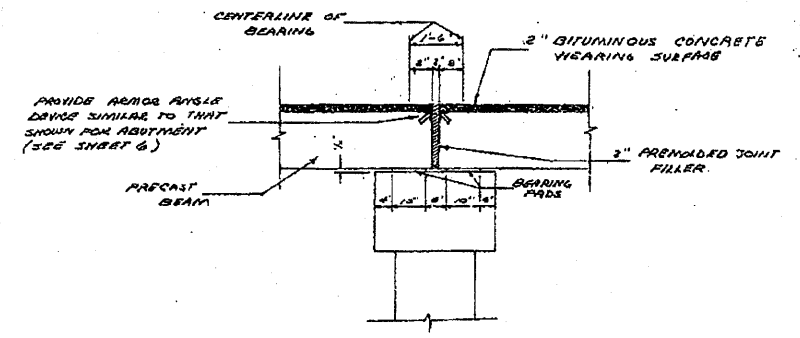
- 1) ALL 'A' CONCRETE SHALL BE USED THROUGHOUT
- 2) EXPOSED EDGES SHALL BE FINISHED 1/2"
- 3) ALL REINFORCEMENT BARS SHALL BE UNPAID
- 4) STEEL FOR EXPOSED ROOFS SHALL BE COIL ROD - HIGH STRENGTH TRANSVERSE THE ROOFS SHALL BE STRUCTURAL STEEL ASTM A-36
- 5) THE TRANSVERSE JOINTS IN THE ROOFS, WALLS, WINDOWS & SILLIES SHALL BE HOT-DIPPED GALVANIZED IN ACCORDANCE WITH ASTM A-153
- 6) EXHAUSTION, CARBON MONOXIDE, ENGINE OIL, AND OTHER SUBSTANCE PROTECTIVE COAT & STAINING RESISTANT COATINGS SHALL BE APPLIED IN ACCORDANCE WITH THE SPECIFICATIONS OF THE MANUFACTURER
- 7) ALL WORK SHALL BE DONE IN ACCORDANCE WITH THE STANDARD SPECIFICATIONS FOR HIGHWAY BRIDGES

PLAN & ELEVATION	
SCALE: 1/4" = 1'	APPROVED BY:
DATE: 11-20-72	DRAWN BY: D.C.
BRADY & VIRGIL J. ASSOCIATES 72 NORTH BROADWAY DES. PLANNING, ILLINOIS	
37507 2 OF 6	DRAWING NUMBER 56F-B

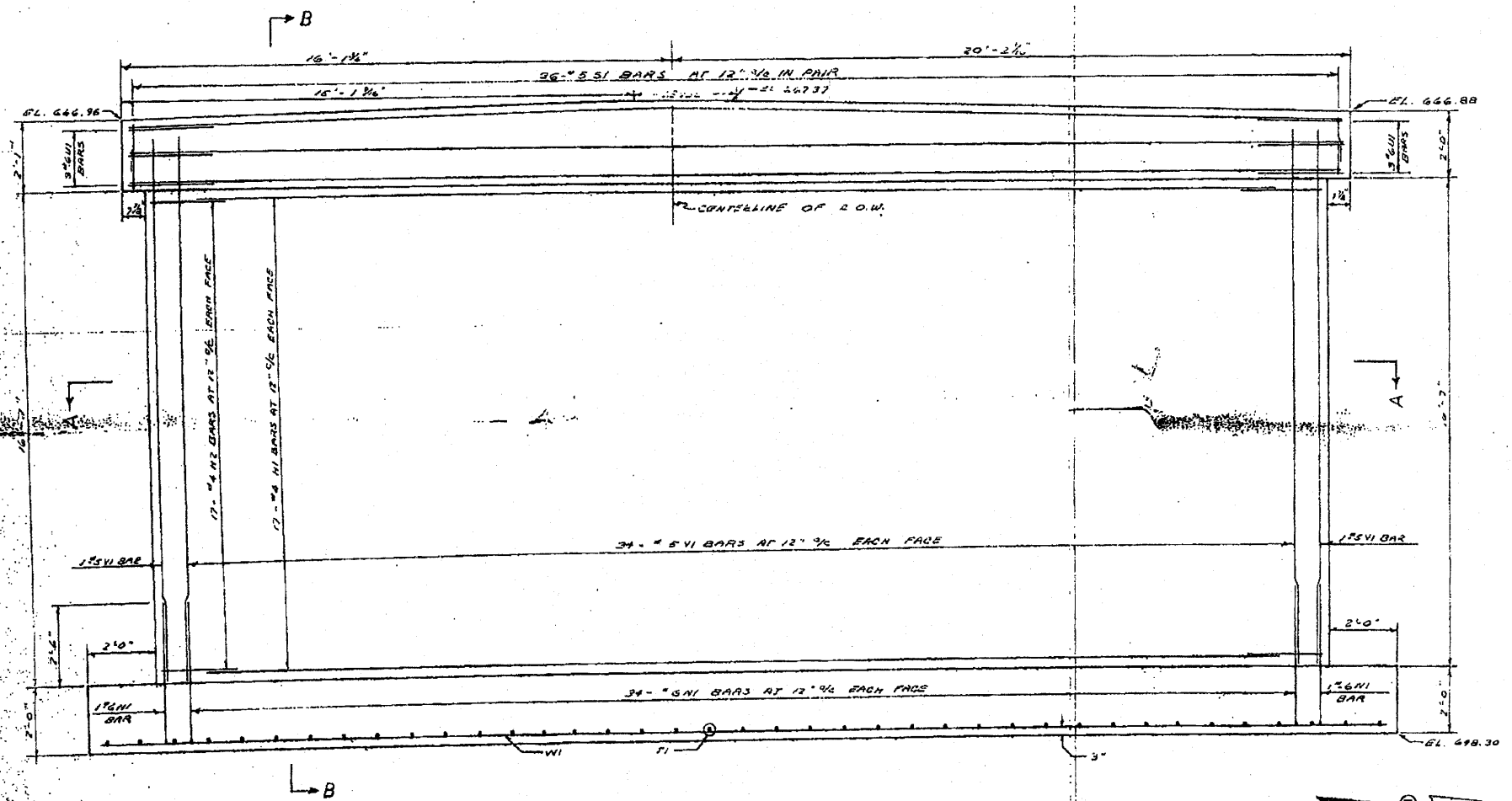
Added 10-13-10 Sheet 47



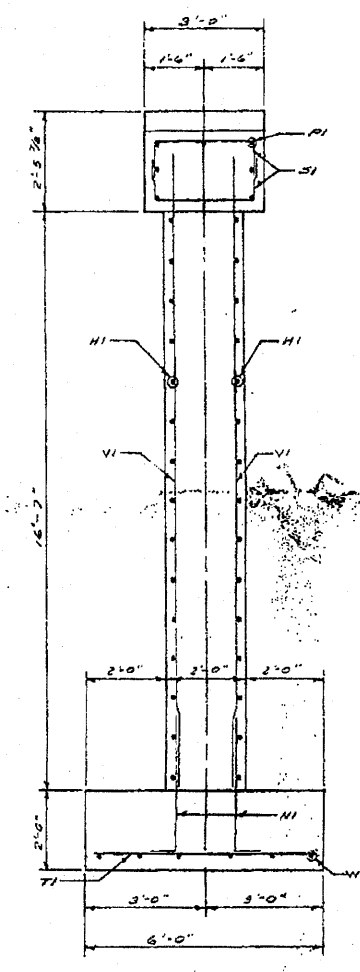
TOP PLAN



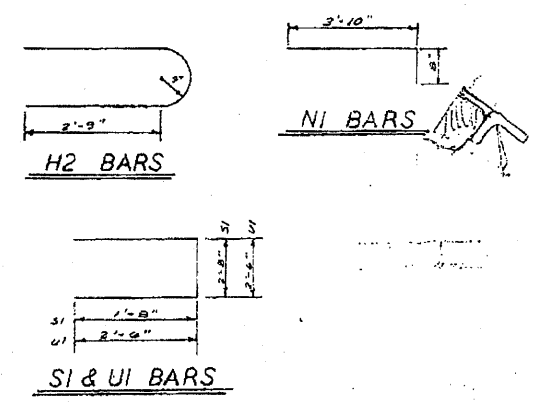
DETAIL OF EXPANSION JOINT AT PIER



ELEVATION

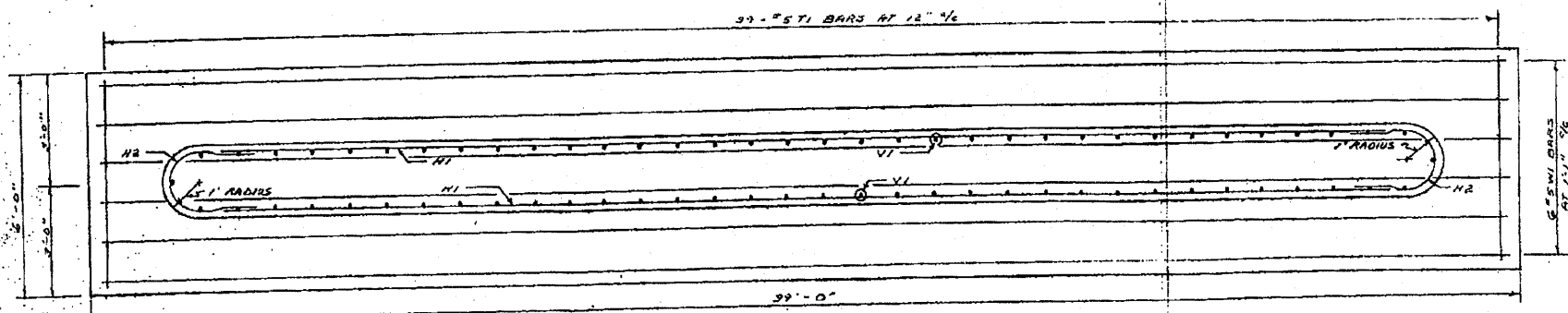


SECTION B-B

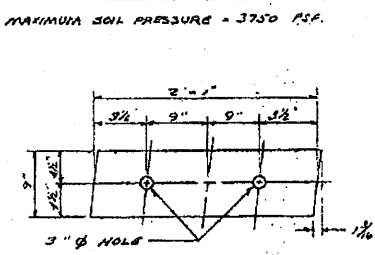


BILL OF REINFORCEMENT				
BAR	NO.	SIZE	LENGTH	SHAPE
H1	34	4	32'-0"	U
H2	34	4	7'-9"	U
N1	70	6	4'-6"	U
P1	7	6	35'-6"	U
S1	72	5	6'-0"	U
T1	39	5	5'-8"	U
U1	6	6	7'-6"	U
V1	70	5	18'-0"	U
W1	6	5	38'-4"	U

PIER QUANTITIES	
CLASS X CONCRETE	67.6 CU. YDS.
REINFORCEMENT BARS	4010 LBS.



SECTION A-A

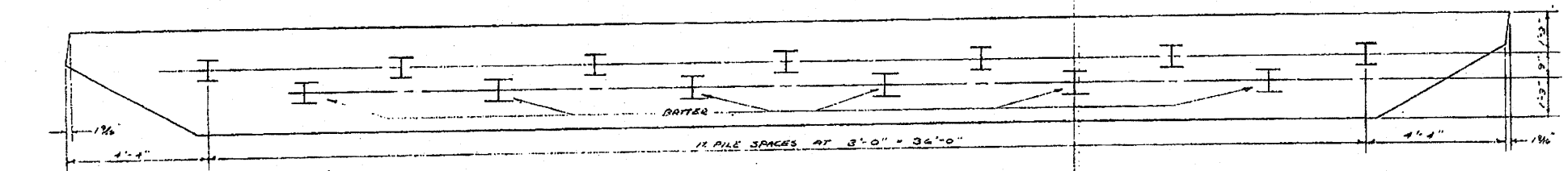
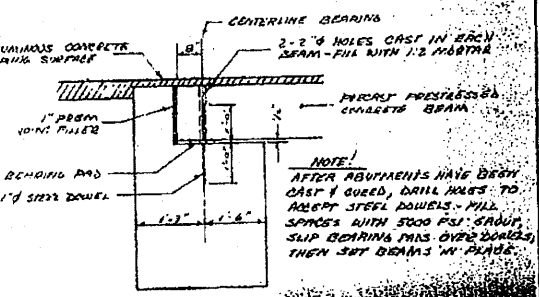
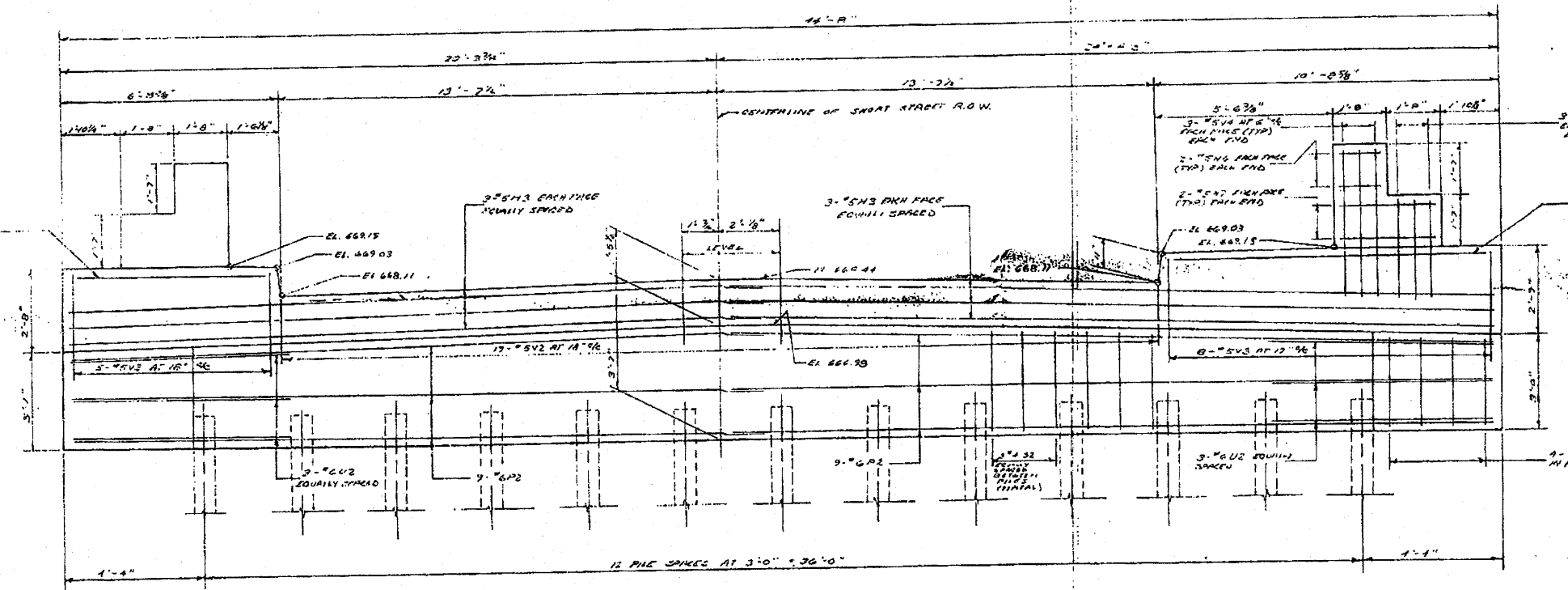
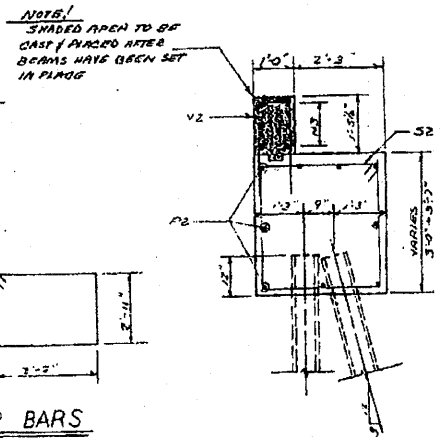
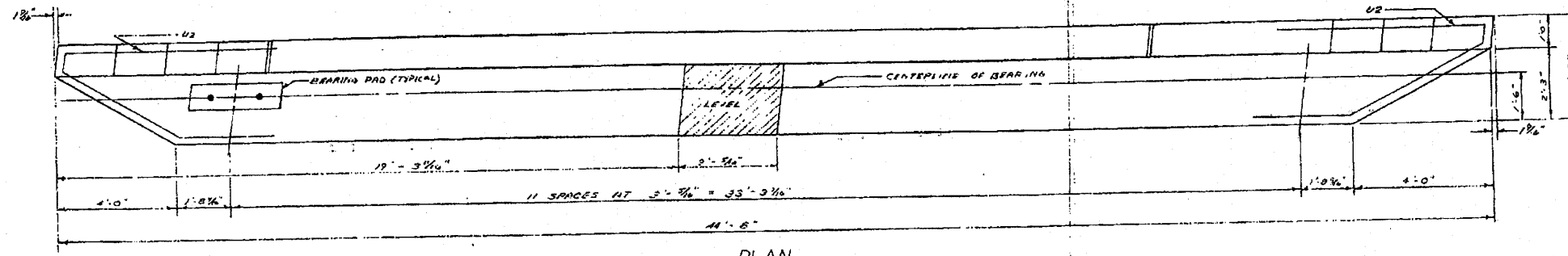


BEARING PAD DETAIL

NOTE!
USE 1/4" ASBESTOS PADS WITH ONE GRAPHITE IMPREGNATED SURFACE. TWO PADS SHALL BE USED AT EACH BEARING LOCATION - AT THE EXPANSION JOINTS THE GRAPHITED SURFACES OF EACH PAD SHALL CONTACT EACH OTHER - AT THE FIXED JOINTS (ABUTMENTS) THE GRAPHITED SURFACES OF EACH PAD SHALL NOT CONTACT EACH OTHER.

PIER		
SCALE: 1/2" = 1'	APPROVED BY:	DRAWN BY: DO
DATE: 11-8-73		REVISED:
BRANECKI - VIRGILIO & ASSOCIATES 72 NORTH BROADWAY DES PLAINES, ILLINOIS		
SHEET 3 OF 6		DRAWING NUMBER 56 E - B

Added 10-13-10 Sheet 48



BILL OF REINFORCEMENT

BAR NO.	SIZE	LENGTH	SHAPE
H3	24	5	22'-8"
H4	4	5	10'-0"
H5	4	5	6'-0"
H6	16	5	1'-4"
H7	16	5	3'-0"
P2	36	6	22'-8"
S2	88	4	10'-4"
U2	12	6	14'-6"
V2	38	5	5'-9"
V3	26	5	7'-9"
V4	24	5	4'-6"
V5	24	5	3'-0"

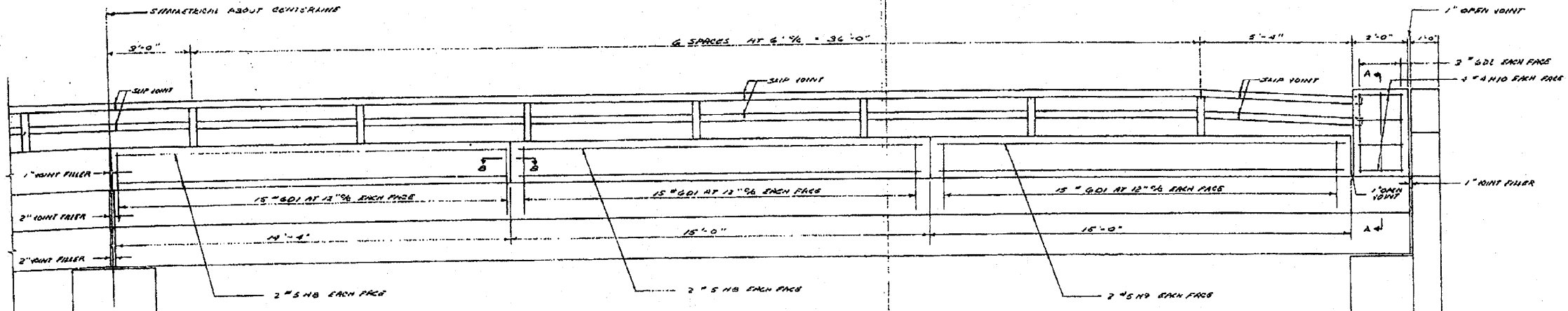
ABUTMENT QUANTITIES

CLASS X CONCRETE	46.5 CU. YDS.
REINFORCEMENT BARS	3610 LBS.

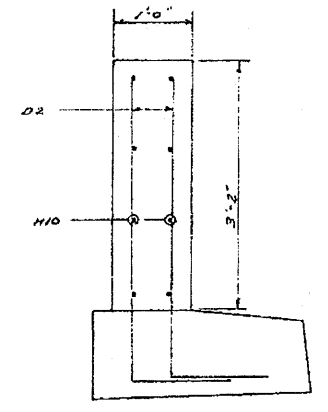
ABUTMENTS

SCALE: 1/4" = 1'-0"	APPROVED BY:	DATE: 11/10/00
DESIGNER: J. J. J.	PROJECT:	
BRANICKI - VIRSILIO & ASSOCIATES 22 - ROOSEVELT SQUARE, SUITE 200 CHICAGO, ILLINOIS		
DRAWN BY: J. J. J.		CHECKED BY: J. J. J.
SHEET 4 OF 6		56E-B

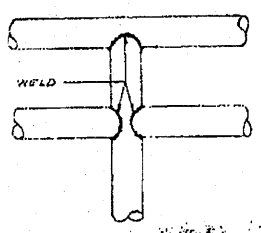
Added 10-13-10 Sheet 49



HANDRAIL ELEVATION



SECTION A-A



HANDRAIL DETAIL

D&C BARS

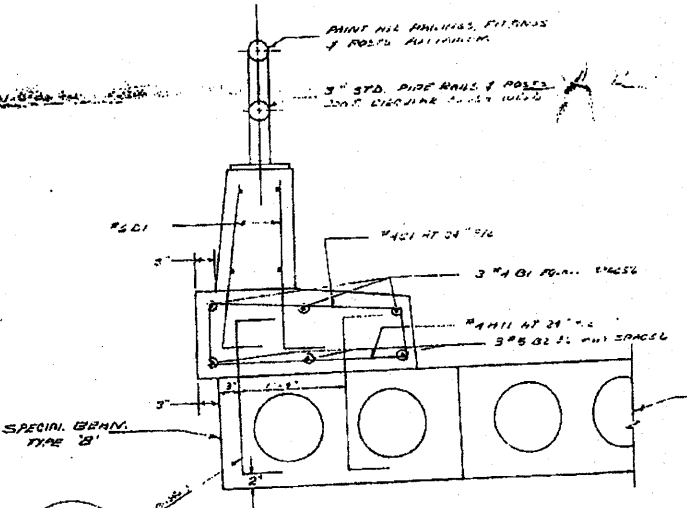
24.2"	D1
23.4"	D2
7'-10"	C1
6'-4"	C2

BILL OF REINFORCEMENT

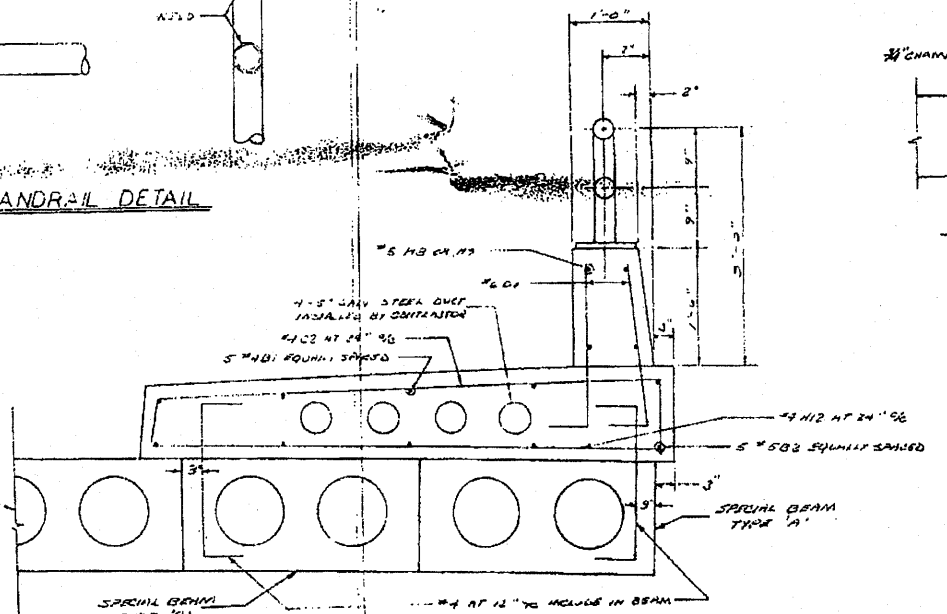
BAR NO.	SIZE	LENGTH	SHAPE
B1	36	4	23'-3"
B2	8	5	23'-4"
C1	48	4	3'-9"
C2	48	4	7'-10"
D1	360	6	2'-10"
D2	24	6	6'-0"
H8	32	6	14'-8"
H9	16	5	14'-1"
H10	32	4	1'-9"
H11	48	4	2'-4"
H12	48	4	6'-4"

CURB & PARAPET QUANTITIES

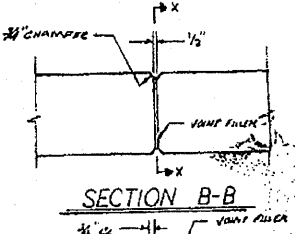
CLASS X CONCRETE	45.8 CU. YDS.
REINFORCEMENT BARS	3654 LBS.



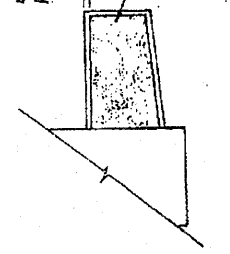
SECTION SOUTH CURB



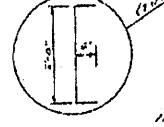
SECTION NORTH CURB



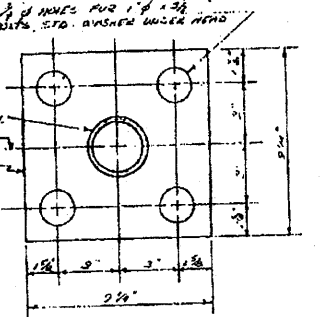
SECTION B-B



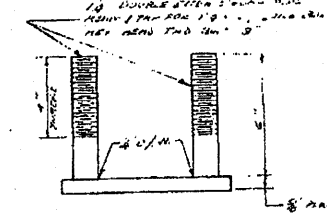
SECTION X-X



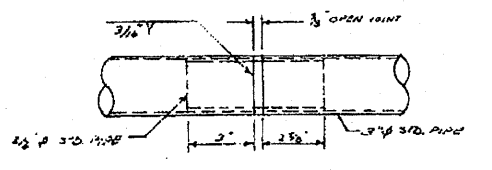
HANDRAIL BASE PLATE



ANCHOR DEVICE-PLAN



ANCHOR DEVICE-SIDE

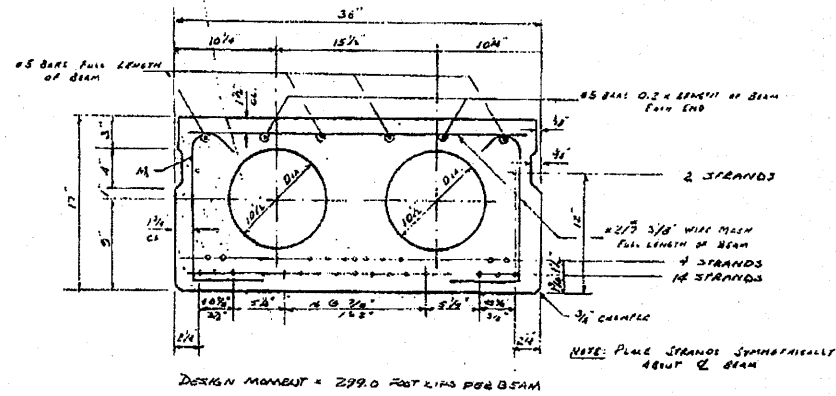


SLIP JOINT

CURB & PARAPET

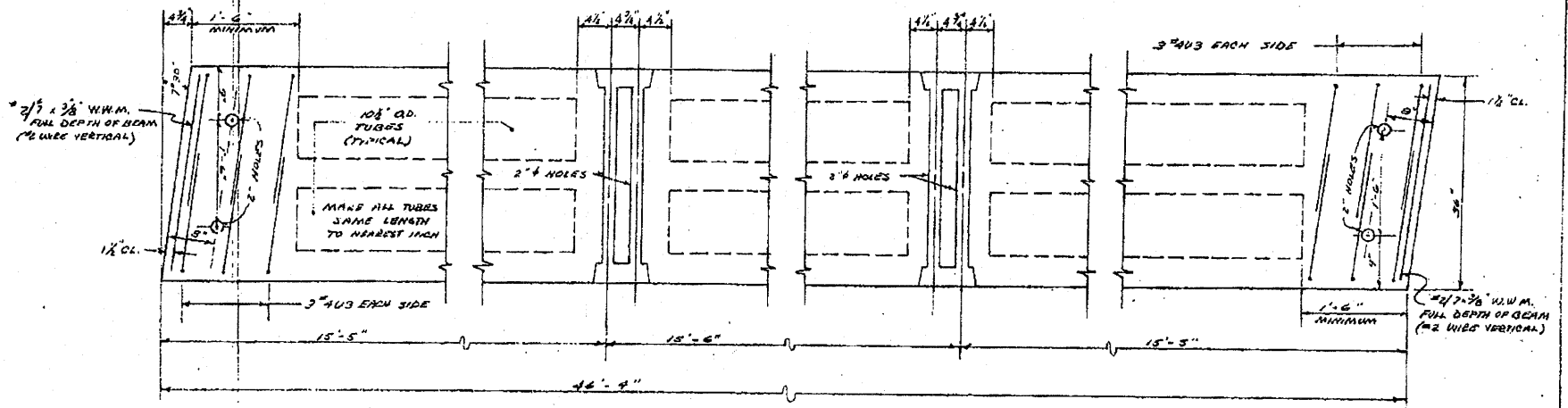
SCALE:	NUMBER OF SHEETS:	REVISIONS:
DATE: 11-19-73	BY: BARRYCART-VIRGILIO & ASSOCIATES	APPROVED:
BARRYCART-VIRGILIO & ASSOCIATES		
225 NORTH BRADWAY		
DES PLAINES, ILLINOIS		
SHEET 5 OF 6		DESIGN NUMBER: 56 E - B

Added 10-13-70 Sheet 50

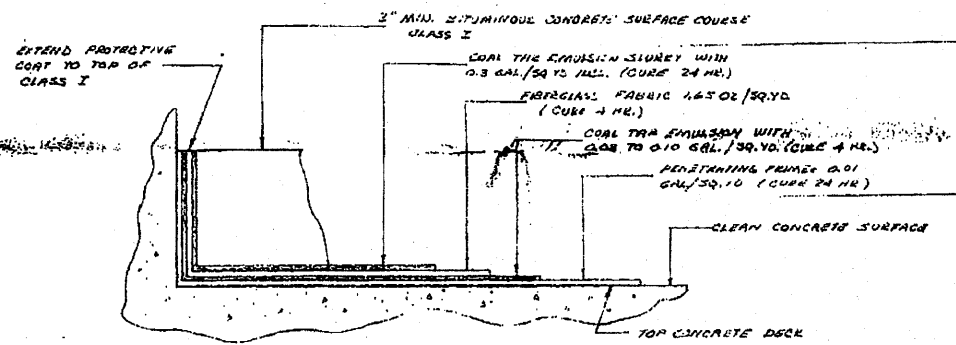


TYPICAL SECTION THRU DECK BEAM

NOTE: PRESTRESS MANUFACTURER TO FURNISH DESIGN CALCULATIONS TO CONSULTING ENGINEER FOR FURTHER REVIEW. PRESTRESS MANUFACTURER TO BE RESPONSIBLE FOR ALL PRESTRESS BEAMS. PROVIDE LIFTING LOOPS IN ACCORDANCE WITH THE STATE OF MARYLAND BRIDGE STANDARDS.

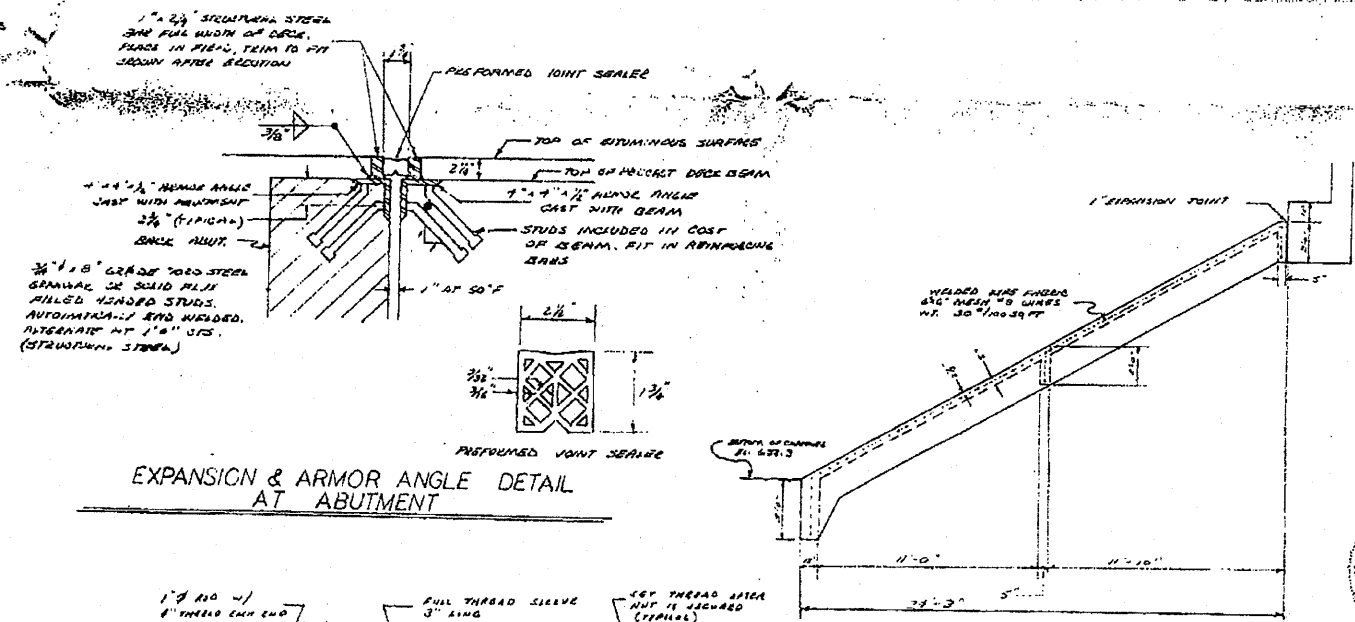


DETAIL OF REINFORCEMENT & TRANSVERSE TIE PLACEMENT

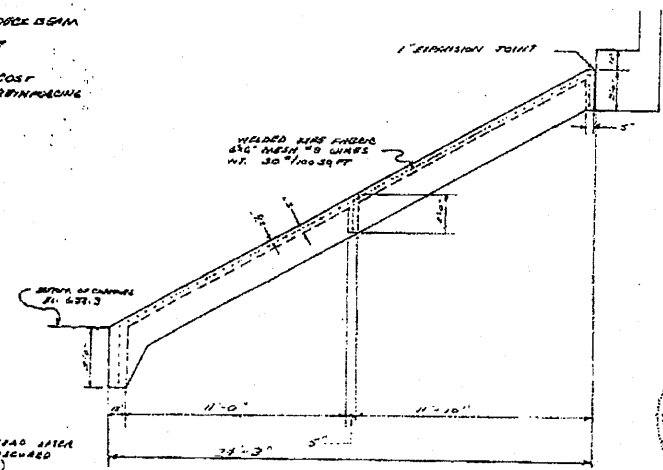


DECK SURFACING

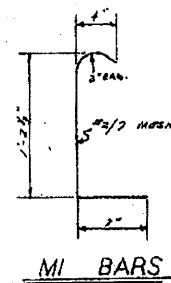
TO BE PAID FOR AS COAL TAR INTERLAYER PROTECTIVE COATING



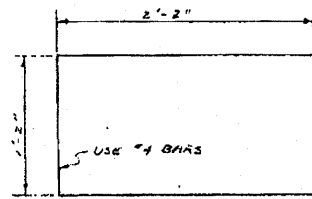
EXPANSION & ARMOR ANGLE DETAIL AT ABUTMENT



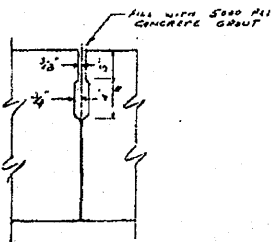
SLOPE WALL



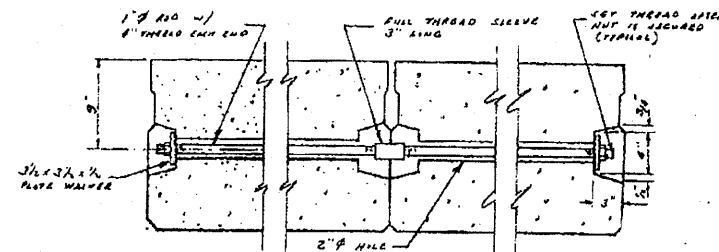
MI BARS



U3 BARS



SHEAR KEY DETAIL



TYPICAL TIE ASSEMBLY

DETAILS		
SCALE:	APPROVED BY:	DRAWN BY: CO
DATE: 11-22-73		REVISED: 2-11-74
BRANFORD - VIRGILIO & ASSOCIATES 22 NORTH BRADLUM PO BOX 1100, BALTIMORE, MARYLAND		
SHEET 6 OF 6		GEARING NUMBER SGE-8

Added 10-13-10 Sheet 51