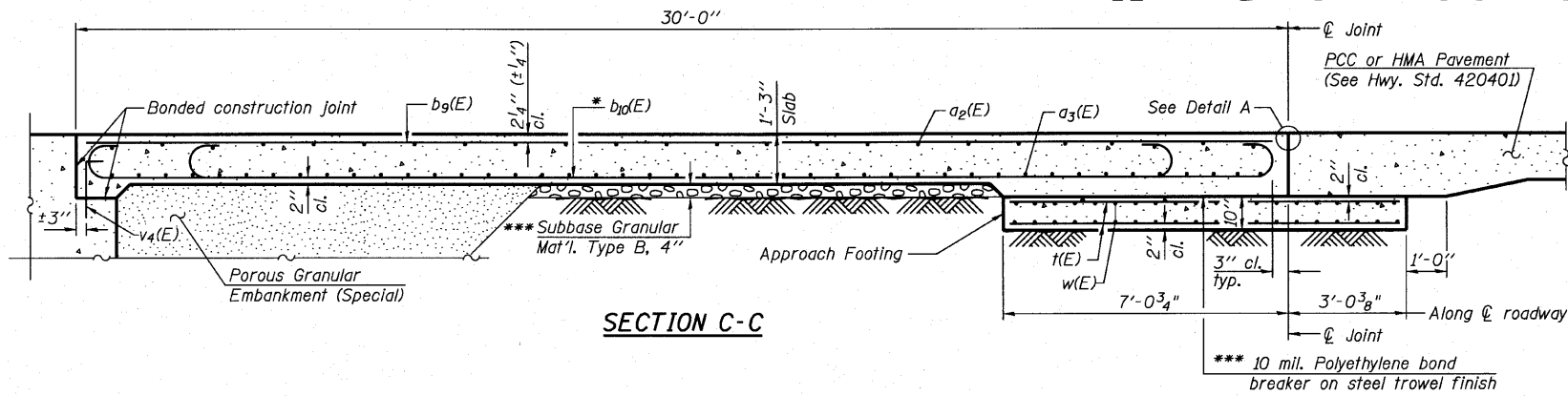


STATE OF ILLINOIS  
DEPARTMENT OF TRANSPORTATION



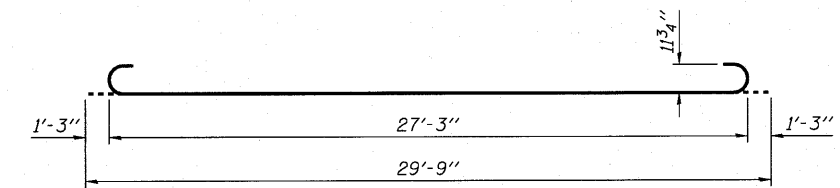
Notes:

See sheet 9 of 18 for Detail A.  
Approach slab and parapet concrete shall be paid for as Concrete Superstructure.  
Sidewalk shall be paid for as Concrete Superstructure, Special.  
Approach footing concrete shall be paid for as Concrete Structures.  
Reinforcement shall be paid for as Reinforcement Bars, Epoxy Coated.  
For v (E) bar details, see sheets 14 and 15 of 18.  
The approach footing maximum applied service bearing pressure (Qmax) = 2.0 ksf.  
Cost of excavation for approach slab and footing included with Concrete Structures.  
For Porous Granular Embankment (Special) and drainage treatment details, see sheet 2 of 18.  
For formliner details, see sheet 8 of 18.  
For railing details, see sheet 12 of 18.  
For conduit details, see sheet 5 of 18.

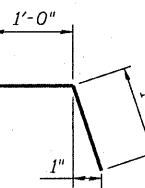
\* Tilt #9 b<sub>10</sub>(E) bars as required to maintain clearance.

\*\* Core and set bars according to Article 509.06 of the Standard Specifications. Cored holes shall be roughened or scored per manufacturer's recommendations.

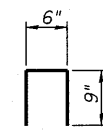
\*\*\* Cost Included with Concrete Superstructure.



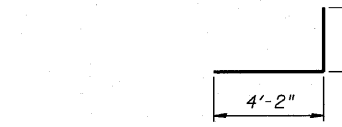
BAR b<sub>10</sub>(E)



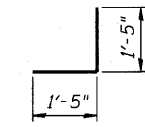
BAR c(E)



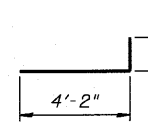
BAR d<sub>3</sub>(E)



BAR d<sub>7</sub>(E)



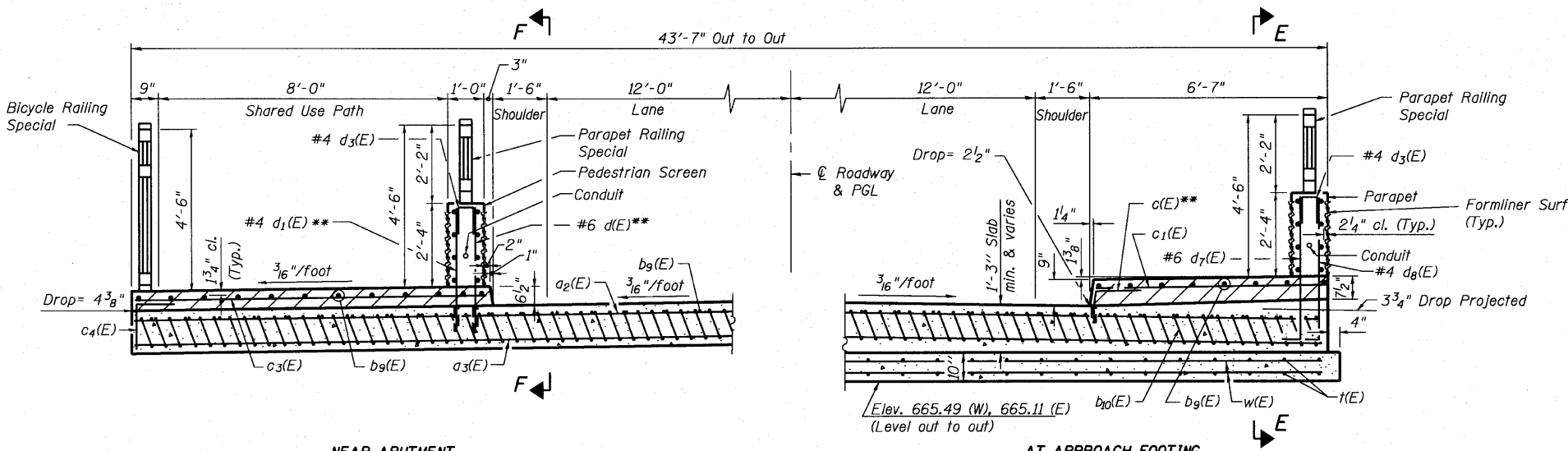
BAR c<sub>4</sub>(E)



BAR d<sub>8</sub>(E)

TWO APPROACHES  
BILL OF MATERIAL

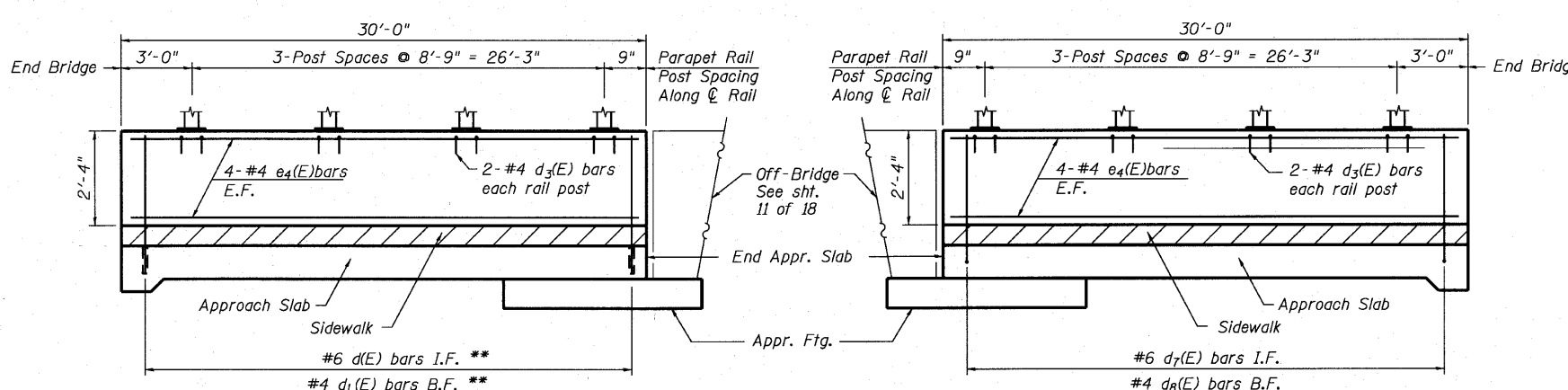
Bar	No.	Size	Length	Shape
a <sub>2</sub> (E)	100	#4	22'-11"	—
a <sub>3</sub> (E)	184	#5	23'-2"	—
b <sub>9</sub> (E)	108	#4	29'-8"	—
b <sub>10</sub> (E)	212	#9	29'-9"	U
c(E)	62	#5	2'-1"	J
c <sub>1</sub> (E)	62	#5	6'-3"	—
c <sub>3</sub> (E)	62	#5	9'-7"	—
c <sub>4</sub> (E)	62	#5	2'-10"	J
d(E)	62	#6	3'-3"	—
d <sub>1</sub> (E)	62	#4	3'-3"	—
d <sub>3</sub> (E)	32	#4	2'-0"	U
d <sub>7</sub> (E)	62	#6	5'-2"	—
d <sub>8</sub> (E)	62	#4	4'-10"	—
e <sub>4</sub> (E)	32	#4	29'-8"	—
f(E)	180	#4	9'-9"	—
w(E)	168	#5	23'-4"	—
Concrete Superstructure			Cu. Yd.	139.2
Concrete Structures			Cu. Yd.	27.2
Reinforcement Bars, Epoxy Coated			Pound	37,970
Protective Coat			Sq. Yd.	350
Concrete Superstructure, Special			Cu. Yd.	22.2
Form Liner Textured Surface, Special			Sq. Ft.	500
Bridge Deck Grooving			Sq. Yd.	167



NEAR ABUTMENT

SECTION D-D

AT APPROACH FOOTING



VIEW F-F

VIEW E-E

DESIGNED -	JJI
CHECKED -	SRT
DRAWN -	GM
CHECKED -	SRT

- Integrally colored Concrete Paid for as Concrete Superstructure, Special

BRIDGE APPROACH SLAB DETAILS  
STRUCTURE NUMBER 022-6649



SHEET NO. 10 18 SHEETS	F.A. RTE.	SECTION	COUNTY	TOTAL SHEETS	SHEET NO.
	-	03-00050-00-BR	DUPAGE	45	31
CONTRACT NO. 63468			FED. ROAD DIST. NO. ILLINOIS FED. AID PROJECT BRM-8003 (676)		