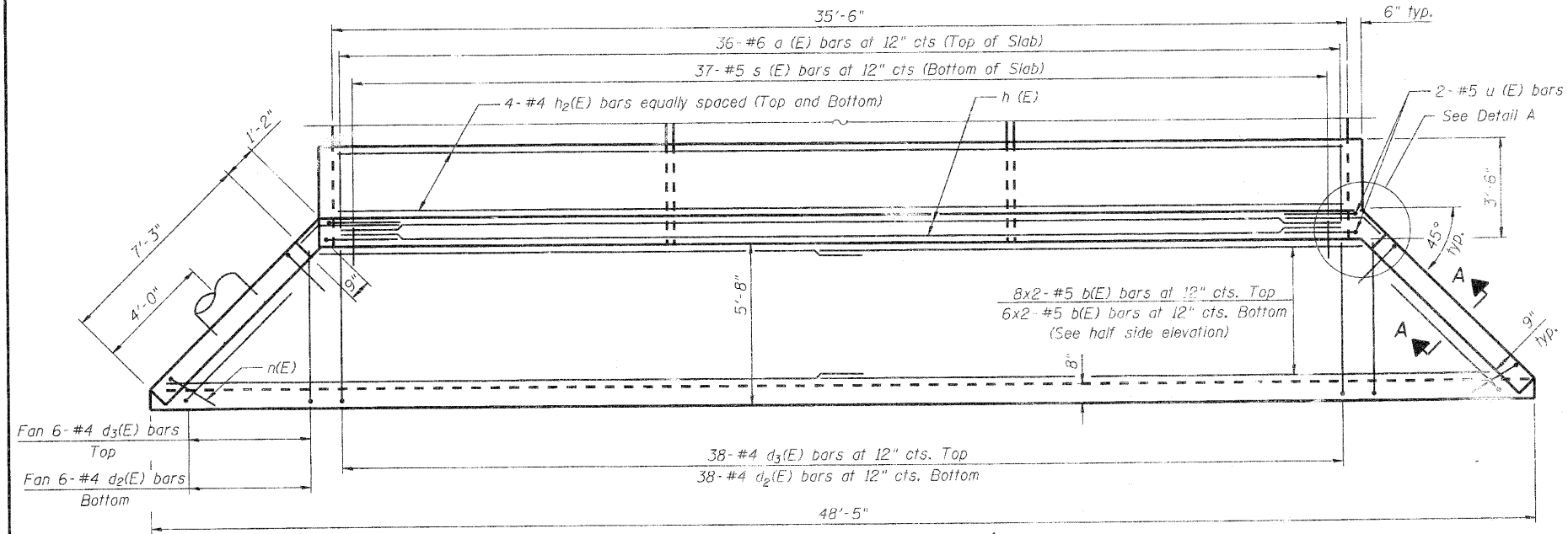
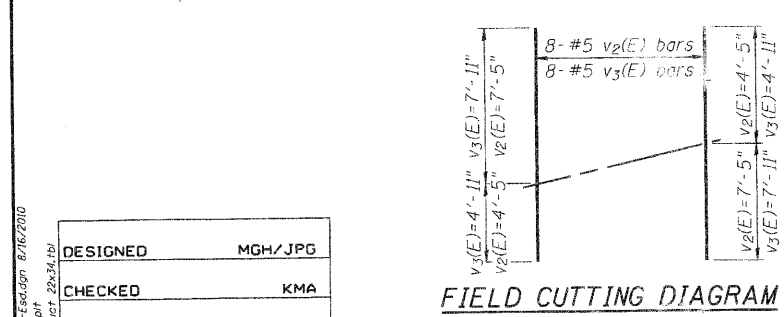


END ELEVATION

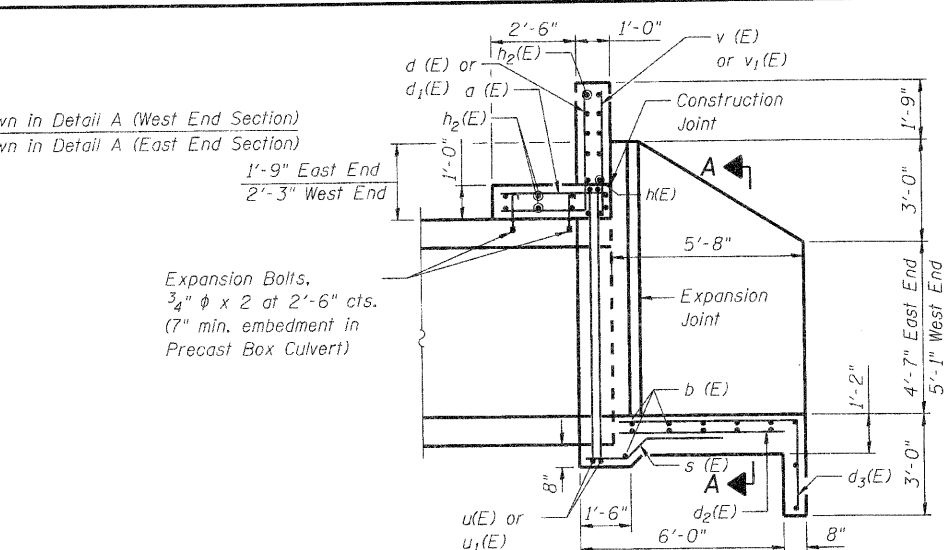
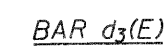
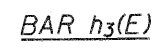
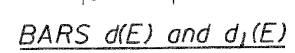


PLAN

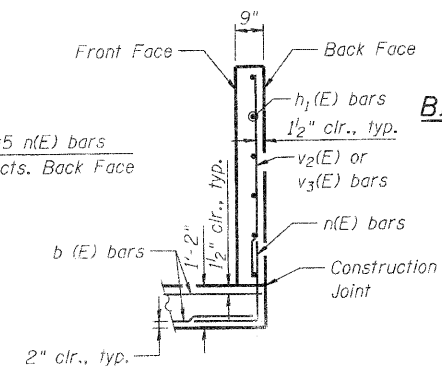


FIELD CUTTING DIAGRAM

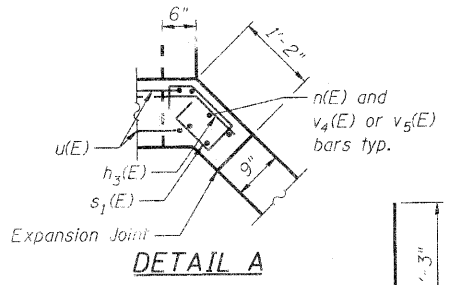
*Order $v_2(E)$, and $v_3(E)$ bars full length. Cut as shown and use remainder of bars in opposite face. Cut to fit bars into the North West wing wall for 24" storm sewer outlet.



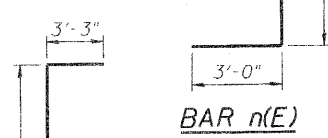
HALF SIDE ELEVATION



SECTION A-A



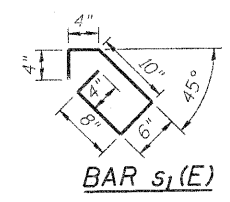
DETAIL A



BAR n(E)



BARS u(E)



BAR s1(E)

MINIMUM BAR LAP

#4 bar = 2'-7"
 #5 bar = 3'-3"
 #6 bar = 3'-10"

BILL OF MATERIAL FOR TWO END SECTIONS

Bar	No.	Size	Length	Shape
a(E)	72	#6	3'-2"	—
b(E)	56	#5	25'-8"	—
d(E)	38	#6	5'-9"	┌
d1(E)	38	#6	6'-1"	┌
d2(E)	100	#4	5'-4"	—
d3(E)	100	#4	7'-9"	┌
h(E)	12	#5	36'-0"	—
h1(E)	40	#5	8'-0"	—
h2(E)	12	#4	36'-4"	—
h3(E)	12	#5	4'-3"	┌
h4(E)	4	#5	3'-4"	—
n(E)	52	#5	7'-3"	┌
s(E)	74	#5	4'-11"	┌
s1(E)	20	#5	3'-0"	┌
u(E)	8	#5	13'-10"	┌
v(E)	38	#4	3'-5"	—
v1(E)	38	#4	3'-9"	—
v2(E)	8	#5	11'-10"	—
v3(E)	8	#5	12'-10"	—
v4(E)	5	#5	7'-11"	—
v5(E)	5	#5	7'-5"	—
Box Culvert End Section, Culvert No. 1			Each	2
** Reinforcement Bars Epoxy Coated			Pound	5,610

END SECTION DETAILS

AYER STREET (FAU ROUTE 0005)
 OVER MOKELER CREEK
 SECTION NO. 06-00057-00-BR
 McHENRY COUNTY
 STATION 203+07.55
 STRUCTURE NO. 056-6203

DATE: 8/16/10

DESIGNED	MGH/JPG
CHECKED	KMA
DRAWN	WJH
CHECKED	RGD

SHEET NO. S-3	F.A.U. RTE.	SECTION	COUNTY	TOTAL SHEETS	SHEET NO.
	0005	06-00057-00-BR	McHENRY	22	14
S-5 SHEETS	CONTRACT NO. 63508				
FED. ROAD DIST. NO. 1 ILLINOIS FED. AID PROJECT					

Illinois Professional Design Firm # 184-000108
SEC GROUP, INC.
 An HR Green Company
 420 N. Front Street, McHenry, IL 60050
 L 815.385.1778 F 815.385.1781
 www.secgroupinc.com
 Chicago, IL • Yorkville, IL • New Lenox, IL • Chicago, IL

FILE NAME: 060594-End.dgn 8/16/2010
 PLOT DRIVER: pctplot 2/24/04
 PLOT TABLE: 2/24/04