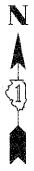


- PR EPOXY PAVEMENT MARKING LEGEND:**
- ① CENTERLINE (SOLID) - 2 @ 4", YELLOW, 11" C-C
 - ② CENTERLINE (SKIP-DASH) - 1 @ 4", YELLOW, 10' DASH, 30' SKIP
 - ③ TURN LANE LINE - 1 @ 6", WHITE
 - ④ CROSSWALK LINE (PEDESTRIAN) - 2 @ 6", WHITE
 - ⑤ STOP LINE - 1 @ 24", WHITE
 - ⑥ PAINTED MEDIAN - 2 @ 4" YELLOW WITH 12" DIAGONALS @ 45 DEG., YELLOW, 20' C-C
 - ⑦ PARKING LINE - 1 @ 4", WHITE
 - ⑧ LETTERS AND SYMBOLS - VARIOUS, WHITE

- PR PAVEMENT RESTORATION LEGEND:**
- # CLASS B PATCH, SEE SCHEDULE OF QUANTITIES - CLASS B PATCHES FOR DETAILS
 - JOINT REPAIR OR LONGITUDINAL JOINT REPAIR, SEE SPECIAL PROVISIONS FOR DETAILS
 - ≡ DOWEL BARS, SPECIAL
 - ▨ PROFILE DIAMOND GRINDING CONCRETE PAVEMENT
 - ▩ DRIVEWAY REMOVAL & REPLACEMENT
 - ▧ COMBINATION CONCRETE CURB & GUTTER REMOVAL & REPLACEMENT



FILE NAME # 11-20_Plan Sheets_Washington
 PLOT DATE # 8/02/10

thomas engineering group, llc
 238 south kenilworth avenue
 suite 100
 oak park, il 60302
 phone: 708-533-1700

DESIGNED - BLP	REVISED -
DRAWN - BLP	REVISED -
CHECKED - KCV	REVISED -
DATE - 08/02/10	REVISED -

STATE OF ILLINOIS
 DEPARTMENT OF TRANSPORTATION

WASHINGTON STREET - IL RTE 38 TO IL RTE 59
 PLAN SHEET
 SCALE: 1" = 20'
 STA. 112+50 TO STA. 124+00

F.A.U. RTE. 1397	SECTION 09-00076-00-RP	COUNTY DUPAGE	TOTAL SHEETS 61	SHEET NO. 20
CONTRACT NO. 63513				
FED. ROAD DIST. NO. 1 ILLINOIS FED. AID PROJECT M-9003(707)				