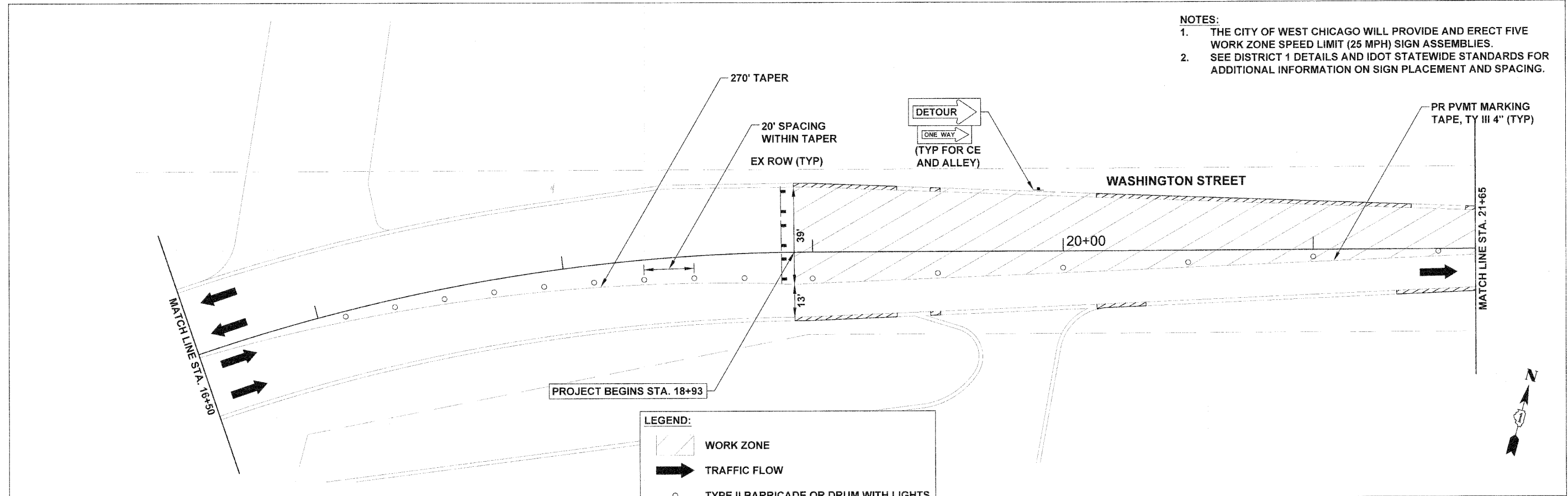
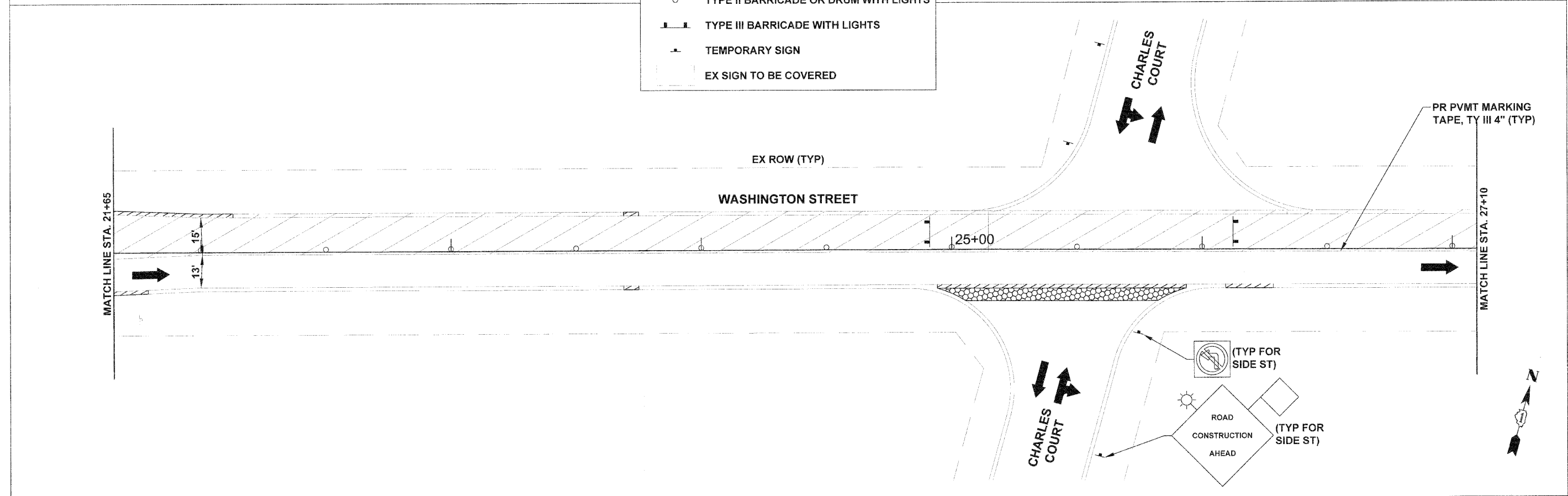


- NOTES:**
1. THE CITY OF WEST CHICAGO WILL PROVIDE AND ERECT FIVE WORK ZONE SPEED LIMIT (25 MPH) SIGN ASSEMBLIES.
  2. SEE DISTRICT 1 DETAILS AND IDOT STATEWIDE STANDARDS FOR ADDITIONAL INFORMATION ON SIGN PLACEMENT AND SPACING.



**LEGEND:**

- WORK ZONE
- TRAFFIC FLOW
- TYPE II BARRICADE OR DRUM WITH LIGHTS
- TYPE III BARRICADE WITH LIGHTS
- TEMPORARY SIGN
- EX SIGN TO BE COVERED



FILE NAME = 24-49_MOT Detour and Plan Sheets_Washington PLOT DATE = 8/22/10		thomas engineering group, llc 238 south kentilworth avenue suite 100 oak park, il 60302 phone: 708-533-1700	DESIGNED - BLP	REVISED -	STATE OF ILLINOIS DEPARTMENT OF TRANSPORTATION	WASHINGTON STREET - IL RTE 38 TO IL RTE 59 MAINTENANCE OF TRAFFIC PLAN SHEET - STAGE 2		F.A.U. RTE. 1397	SECTION 09-00076-00-RP	COUNTY DUPAGE	TOTAL SHEETS 61	SHEET NO. 39
			DRAWN - BLP	REVISED -		SCALE: 1" = 20'	STA. 16+50 TO STA. 27+10	FED. ROAD DIST. NO. 1	ILLINOIS	FED. AID PROJECT M-9003(707)		
CHECKED - KCV	REVISED -	CONTRACT NO. 63513										
DATE - 08/02/10	REVISED -											