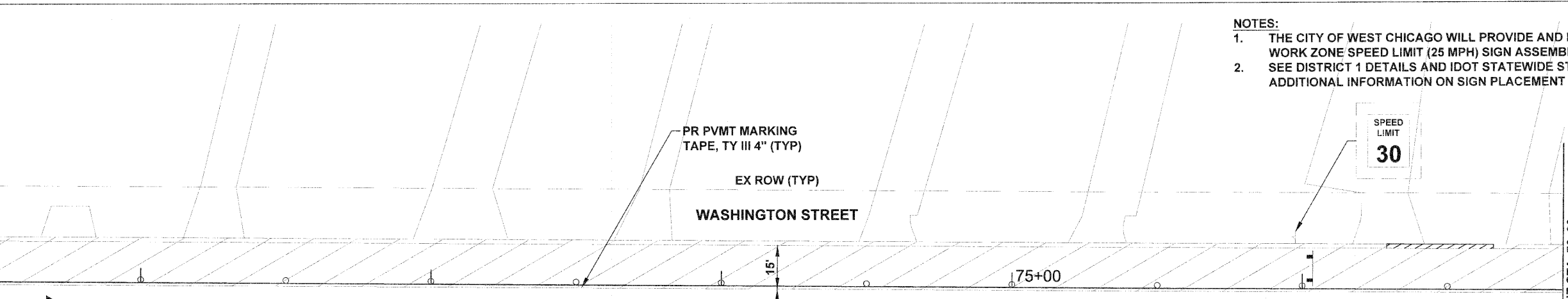


- NOTES:**
1. THE CITY OF WEST CHICAGO WILL PROVIDE AND ERECT FIVE WORK ZONE SPEED LIMIT (25 MPH) SIGN ASSEMBLIES.
 2. SEE DISTRICT 1 DETAILS AND IDOT STATEWIDE STANDARDS FOR ADDITIONAL INFORMATION ON SIGN PLACEMENT AND SPACING.

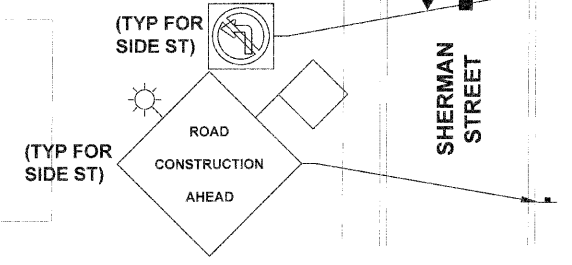
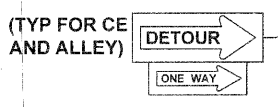
MATCH LINE STA. 71+50



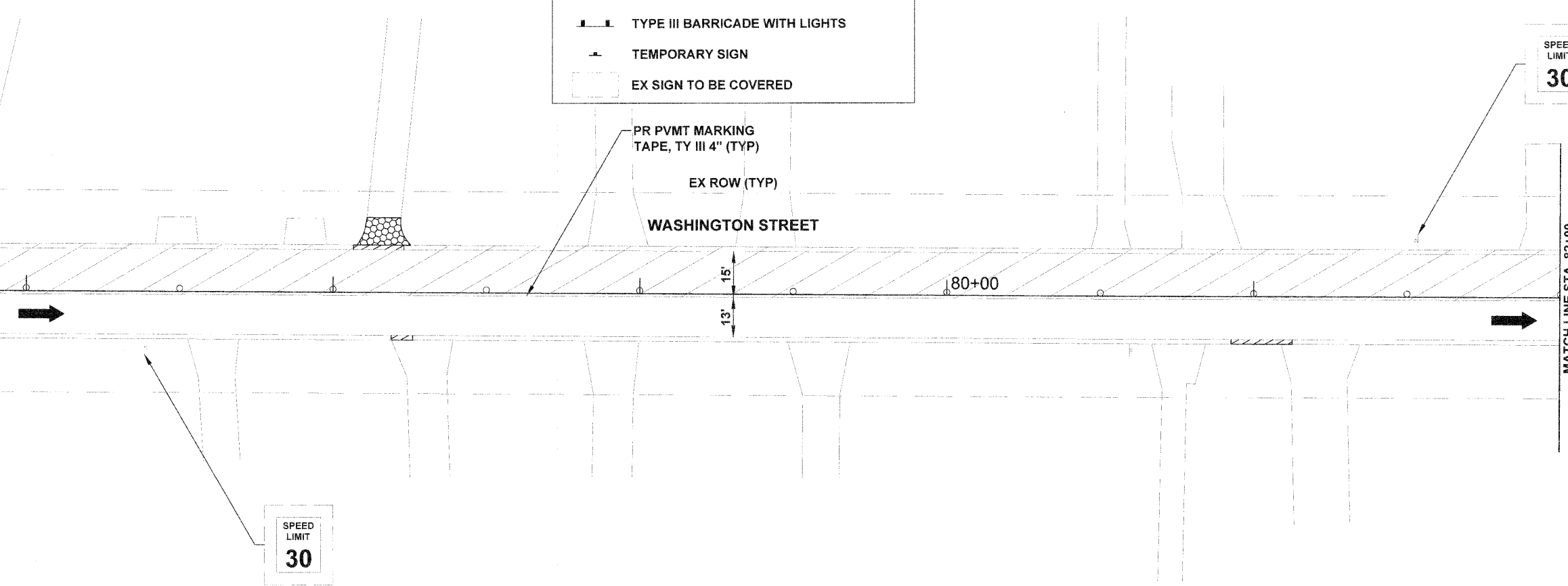
MATCH LINE STA. 76+90

LEGEND:

- WORK ZONE
- TRAFFIC FLOW
- TYPE II BARRICADE OR DRUM WITH LIGHTS
- TYPE III BARRICADE WITH LIGHTS
- TEMPORARY SIGN
- EX SIGN TO BE COVERED



MATCH LINE STA. 76+90



MATCH LINE STA. 82+00



FILE NAME = 24-49_MOT Detour and Plan Sheets_Washington
 PLOT DATE = 8/02/10

thomas engineering group
 thomas engineering group, llc
 238 south kenilworth avenue
 suite 100
 oak park, il 60302
 phone: 708-533-1700

DESIGNED - BLP	REVISED -
DRAWN - BLP	REVISED -
CHECKED - KCV	REVISED -
DATE - 08/02/10	REVISED -

STATE OF ILLINOIS
 DEPARTMENT OF TRANSPORTATION

WASHINGTON STREET - IL RTE 38 TO IL RTE 59
 MAINTENANCE OF TRAFFIC PLAN SHEET - STAGE 2
 SCALE: 1" = 20'
 STA. 71+50 TO STA. 82+00

F.A.U. RTE. 1397	SECTION 05-00076-00-RP	COUNTY DUPAGE	TOTAL SHEETS 61	SHEET NO. 44
CONTRACT NO. 63513				
FED. ROAD DIST. NO. 1 ILLINOIS FED. AID PROJECT M-9003(707)				