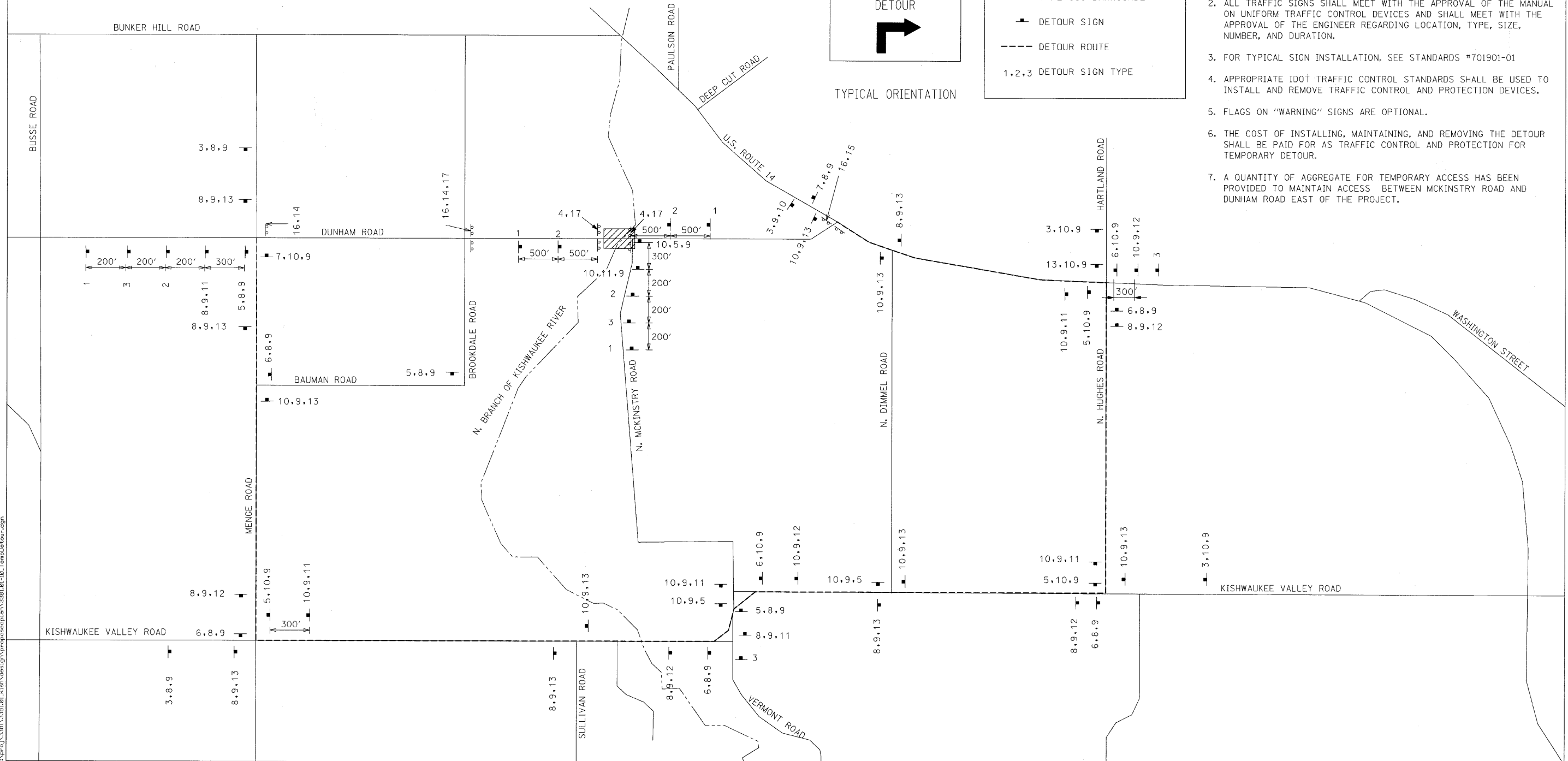
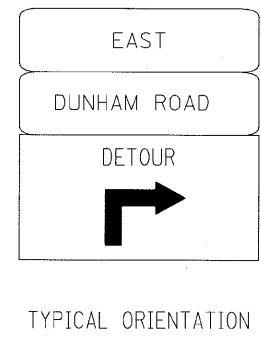
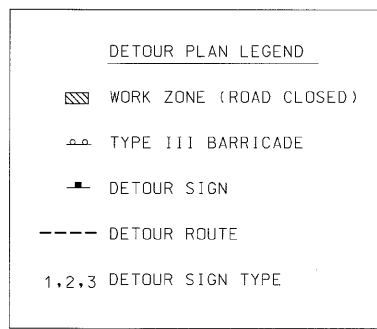


DETOUR PLAN GENERAL NOTES

1. TEMPORARY TRAFFIC CONTROL SIGNS MUST BE INSTALLED AT THE DIRECTION AND UNDER THE SUPERVISION OF THE ENGINEER. 48 HOURS NOTICE MUST BE GIVEN TO THE ENGINEER AND MCHENRY COUNTY PRIOR TO INSTALLATION.
2. ALL TRAFFIC SIGNS SHALL MEET WITH THE APPROVAL OF THE MANUAL ON UNIFORM TRAFFIC CONTROL DEVICES AND SHALL MEET WITH THE APPROVAL OF THE ENGINEER REGARDING LOCATION, TYPE, SIZE, NUMBER, AND DURATION.
3. FOR TYPICAL SIGN INSTALLATION, SEE STANDARDS #701901-01
4. APPROPRIATE IDOT TRAFFIC CONTROL STANDARDS SHALL BE USED TO INSTALL AND REMOVE TRAFFIC CONTROL AND PROTECTION DEVICES.
5. FLAGS ON "WARNING" SIGNS ARE OPTIONAL.
6. THE COST OF INSTALLING, MAINTAINING, AND REMOVING THE DETOUR SHALL BE PAID FOR AS TRAFFIC CONTROL AND PROTECTION FOR TEMPORARY DETOUR.
7. A QUANTITY OF AGGREGATE FOR TEMPORARY ACCESS HAS BEEN PROVIDED TO MAINTAIN ACCESS BETWEEN MCKINSTRY ROAD AND DUNHAM ROAD EAST OF THE PROJECT.



FILE NAME = m:\p\c\j\3381\3381.dwg\design\proposedplan\3381\01-10_TempDetour.dgn

Ciorba Group, Inc.
 CONSULTING ENGINEERS
 5507 North Cumberland Avenue, Suite 402
 Chicago, Illinois 60656
 Tel. 773.775.4009 Fax 773.775.4014

USER NAME = espina	DESIGNED - CLG	REVISED - 8/02/2010
PLOT SCALE = 1:8000' / IN.	DRAWN - EPS	REVISED -
PLOT DATE = 8/30/2010	CHECKED - MJL	REVISED -
	DATE - 6/18/2010	REVISED -

MCHENRY COUNTY DIVISION OF TRANSPORTATION

NTS

TEMPORARY DETOUR PLAN

SCALE: N.T.S. SHEET NO. OF SHEETS STA. TO STA.

F.A.S. RTE.	SECTION	COUNTY	TOTAL SHEETS	SHEET NO.
1233	06-00321-00-BR	MCHENRY	48	12
CONTRACT NO. 63516				
FED. ROAD DIST. NO. 1 ILLINOIS FED. AID PROJECT				