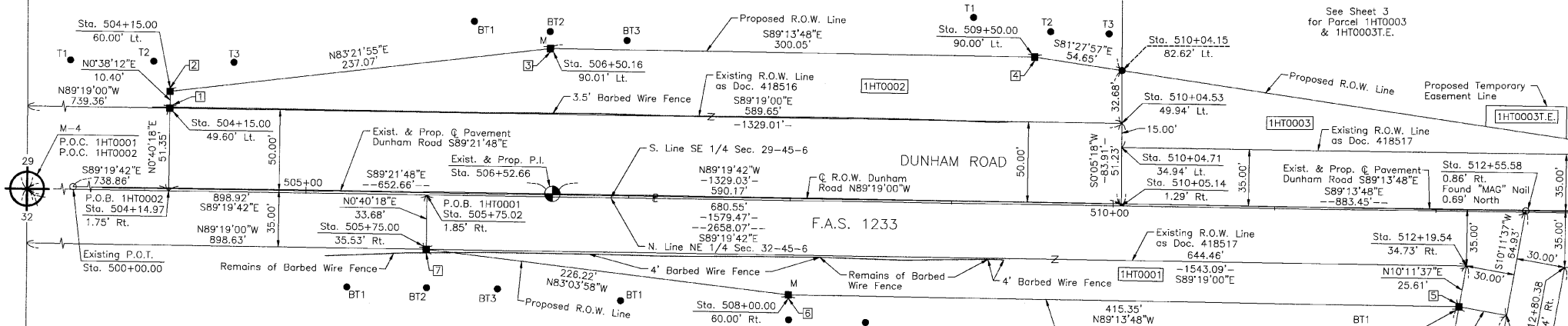
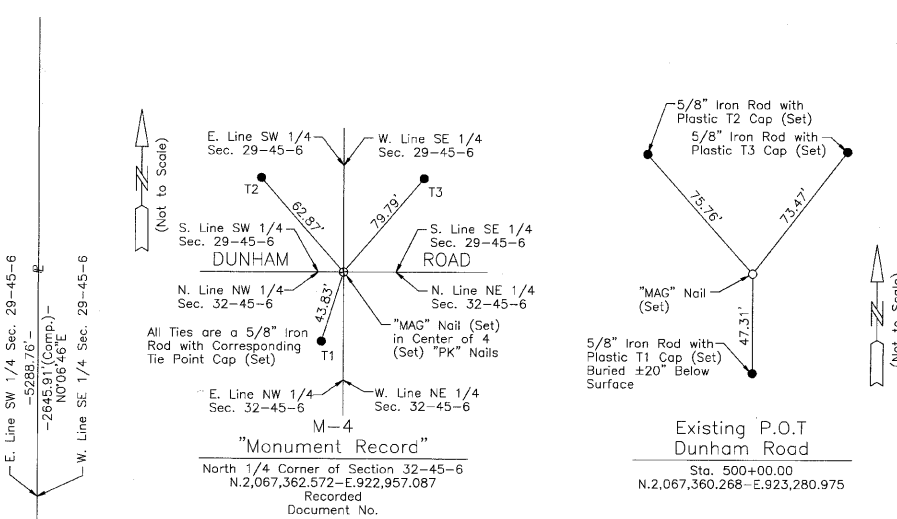
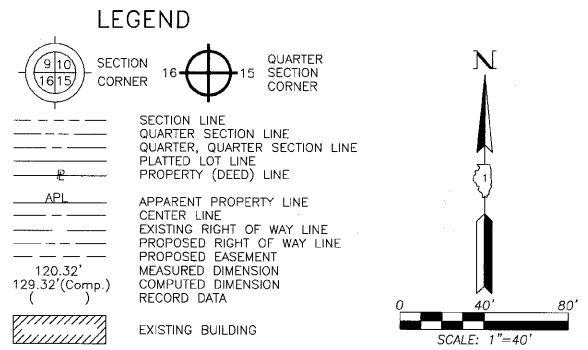


PART OF THE SE 1/4 OF SEC. 29 AND PART OF THE NE 1/4 OF SEC. 32, TWP. 45 N., R. 6 E. OF THE 3RD. P.M., IN McHENRY COUNTY, ILLINOIS.

Note: Surface Coordinates are Shown.

STATION	OFFSET	NORTH	EAST
504+14.97	1.75' Rt.	2,067,353.910	923,695.898
504+15.00	49.60' Lt.	2,067,405.256	923,696.501
504+15.00	60.00' Lt.	2,067,415.654	923,696.616
505+75.00	35.53' Rt.	2,067,318.353	923,855.545
505+75.02	1.85' Rt.	2,067,352.033	923,855.940
506+50.16	90.01' Lt.	2,067,443.045	923,932.100
508+00.00	60.00' Rt.	2,067,291.042	924,080.115
509+50.00	90.00' Lt.	2,067,439.013	924,232.118
510+04.15	82.62' Lt.	2,067,430.903	924,286.158
510+04.53	49.94' Lt.	2,067,398.224	924,286.108
510+04.71	34.94' Lt.	2,067,383.223	924,286.085
510+05.14	1.29' Rt.	2,067,346.991	924,286.029
512+15.35	60.00' Rt.	2,067,285.460	924,495.429
512+19.54	34.73' Rt.	2,067,310.667	924,499.961
512+44.95	64.91' Rt.	2,067,280.151	924,524.955
512+55.58	0.86' Rt.	2,067,344.054	924,536.446
512+80.38	34.64' Rt.	2,067,309.941	924,560.793



PARCEL NUMBER	OWNER	TOTAL HOLDINGS ACRES	PART TAKEN ACRES	AREA IN EXISTING R.O.W. ACRES	REMAINDER AREA ACRES	EASEMENT AREA ACRES	EASEMENT PURPOSE	PERMANENT INDEX NUMBER	PROPERTY ACQUIRED BY
1HT0001	Robert C. Hughes, as Trustee of the Robert C. Hughes Declaration of Trust dated July 17, 1975, as to an undivided 1/2 interest, and Genevieve C. Hughes, as Trustee of the Genevieve C. Hughes Declaration of Trust dated July 17, 1975, as to an undivided 1/2 interest	72.019	0.847	0.544	71.172	N/A	N/A	07-32-200-001	
1HT0002	McHenry County Conservation District	80.767	1.156	0.695	79.611	N/A	N/A	07-29-400-001	

Point Number	Tie to point	Tie Distance (feet)
1	T1	68.35
	T2	30.71
	T3	48.80
2	T1	64.64
	T2	21.23
	T3	43.44
3	BT1	49.93
	BT2	10.39
	BT3	47.70
4	T1	43.14
	T2	18.50
	T3	48.20
5	BT1	57.26
	BT2	47.91
	BT3	49.15
6	BT1	104.11
	BT2	15.40
	BT3	50.67
7	BT1	54.42
	BT2	23.74
	BT3	50.46

Parcel	Document No.	Date Recorded
1HT0001	418517	August 6, 1963
1HT0002	418516	August 6, 1963
---	418517	August 6, 1963

JORGENSEN & ASSOCIATES, INC.
120 PARK AVENUE
LAKE VILLA, ILLINOIS 60046
(847) 356-3371

SHEET 1 IS A COVER SHEET AND IS NOT RECORDED.

PLAT OF HIGHWAYS
STATE OF ILLINOIS
DEPARTMENT OF TRANSPORTATION
F.A.S. 1233 (DUNHAM ROAD)
SECTION 06-00321-00-BR McHENRY COUNTY
PROJECT BHS-1233(104) JOB NO. R-91-031-06
STATION 504+00 TO STATION 513+00
SCALE: 1"=40' SHEET 2 OF 4

BUREAU OF LAND ACQUISITION
201 WEST CENTER COURT
SCHAUMBURG, ILLINOIS 60196

ROUTE F.A.S. 1233 (DUNHAM ROAD) SECTION 06-00321-00-BR COUNTY McHENRY JOB NO. R-91-031-06 RECORDING: RECORDED ON AS DOCUMENT NO.

Corba Group, Inc.
CONSULTING ENGINEERS
5537 North Cumberland Avenue, Suite 402
Chicago, Illinois 60656
Tel. 773.775.4008 Fax 773.775.4014

USER NAME = espino	DESIGNED - CLG	REVISED - 8/02/2010
PLOT SCALE = 40.0000' / IN.	DRAWN - EPS	REVISED -
PLOT DATE = 8/2/2010	CHECKED - MJL	REVISED -
	DATE - 6/18/2010	REVISED -

McHENRY COUNTY DIVISION OF TRANSPORTATION

SCALE: N.T.S.	SHEET NO.	OF SHEETS	STA.	TO STA.

F.A.S. RTE.	SECTION	COUNTY	TOTAL SHEETS	SHEET NO.
1233	06-00321-00-BR	McHENRY	48	15

CONTRACT NO. 63516
FED. ROAD DIST. NO. 1 [ILLINOIS] FED. AID PROJECT