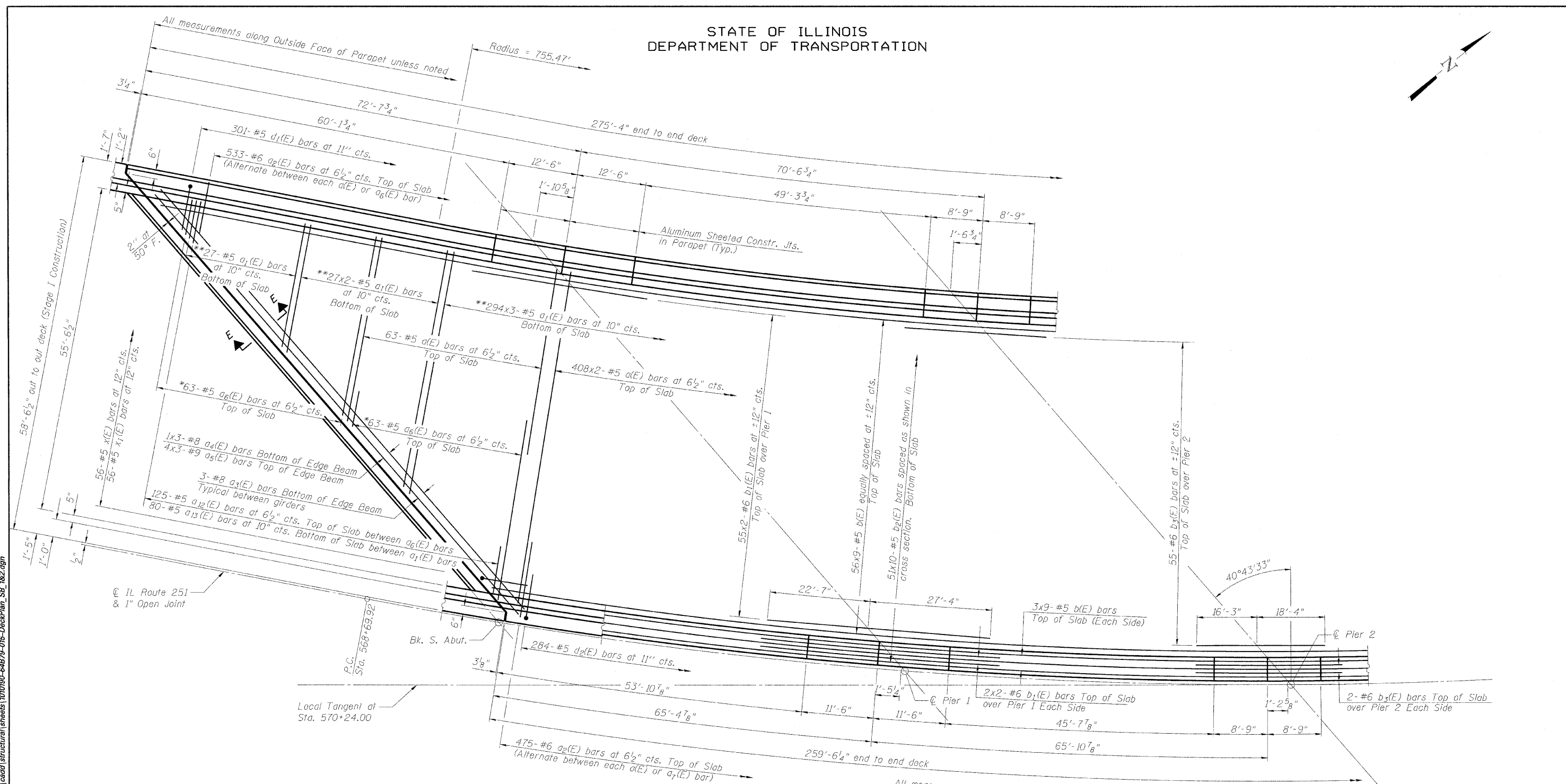
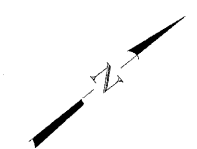


STATE OF ILLINOIS
DEPARTMENT OF TRANSPORTATION



*Order a₆(E) bars full length. Cut to fit skew and use remainder of bars in same end of deck.
**Vary lap length or cut to fit skew.

SOUTHBOUND DECK PLAN - SPANS 1 AND 2

**DECK PLAN - SOUTHBOUND
SPANS 1 AND 2
STRUCTURE NO. 101-0190**

10/19/2010 11:12:26 AM g:\project\1082773_001\addl\structural\sheet\1010190-64B79-015-DeckPlan_SB_1&2.dgn

DESIGNED	JY
CHECKED	GSP
DRAWN	MJB
CHECKED	JY

MINIMUM BAR LAPS
(Deck)

#5 Bar	- 2'-7"
#6 Bar	- 3'-1"
#8 Bar	- 6'-9"
#9 Bar	- 9'-8"

Notes:
See Sheet 17 for deck cross section.
See Sheets 22 and 23 for superstructure details, Section E-E and Bill of Material.
Bars indicated thus 20 x 3-#5 etc. indicates 20 lines of bars with 3 lengths per line.
See Sheet 21 for parapet reinforcement.
Transverse bars shall be placed radially.
Longitudinal bars shall be placed along the curve.

SHEET NO. 15 61 SHEETS	F.A.* RTE.	SECTION	COUNTY	TOTAL SHEETS	SHEET NO.
	*	1-HBR & 1-2HB-D	WINNEBAGO	216	70
	IL RTE 251 & FOREST HILLS RD		CONTRACT NO. 64B79		
FED. ROAD DIST. NO. 7 ILLINOIS FED. AID PROJECT					

* F.A.P. 303 & F.A.U. 5146

Revised 10/25/10 BHS

