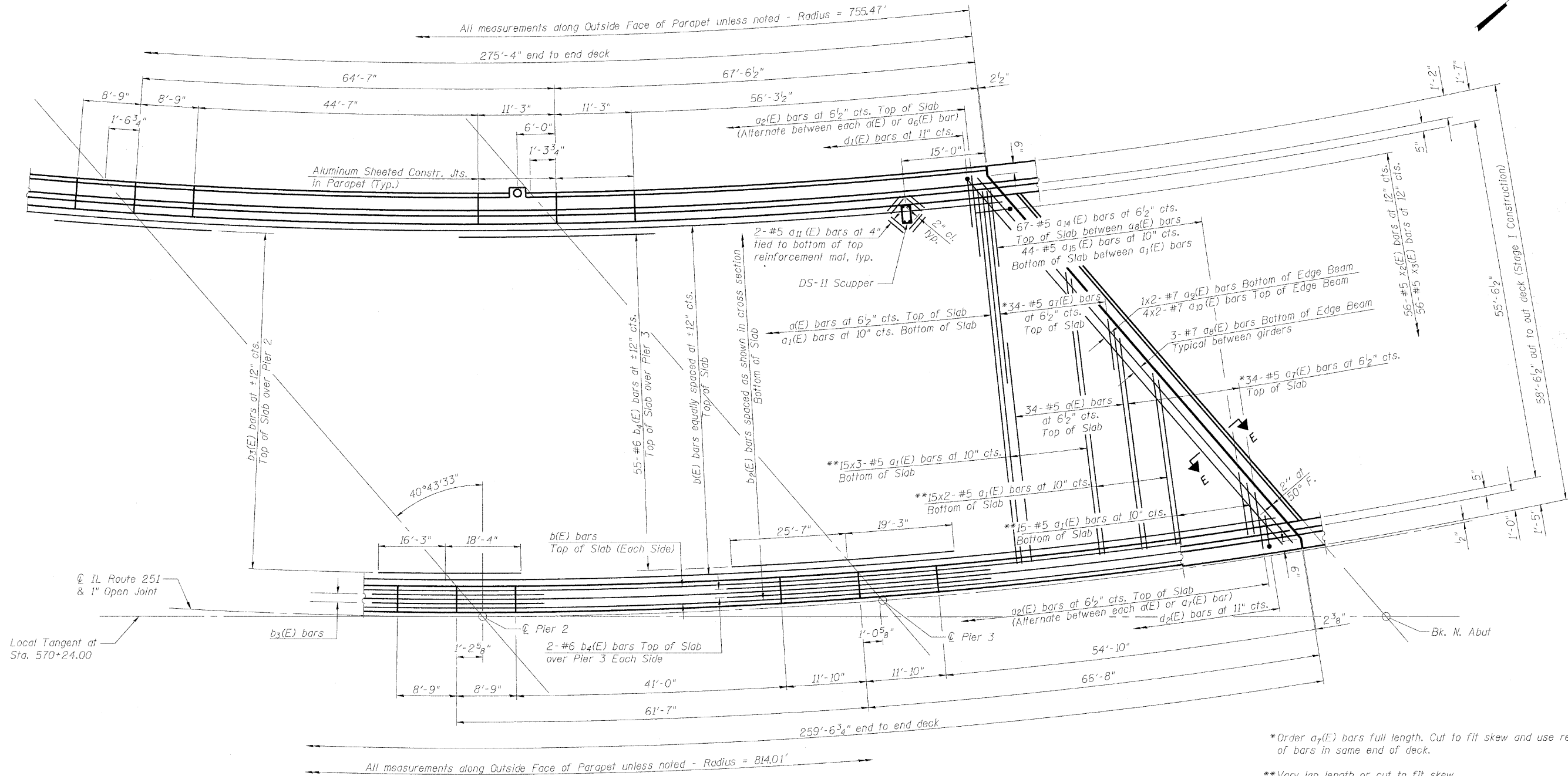


STATE OF ILLINOIS
DEPARTMENT OF TRANSPORTATION



SOUTHBOUND DECK PLAN - SPANS 3 AND 4

DECK PLAN - SOUTHBOUND
SPANS 3 AND 4
STRUCTURE NO. 101-0190

DESIGNED	JY
CHECKED	GSP
DRAWN	MJB
CHECKED	JY

MINIMUM BAR LAPS

- (Deck)
 #5 Bar - 2'-7"
 #6 Bar - 3'-1"
 #7 Bar - 5'-10"

Notes:
 See Sheet 17 for deck cross section.
 See Sheets 22 and 23 for superstructure details, Section F-F and Bill of Material.
 Bars indicated thus 20 x 3-#5 etc. indicates 20 lines of bars with 3 lengths per line.
 See Sheet 21 for parapet reinforcement.
 Transverse bars shall be placed radially.
 Longitudinal bars shall be placed along the curve.
 Cut longitudinal reinforcement to clear drainage scupper.

SHEET NO. 16 61 SHEETS	F.A.* RTE.	SECTION	COUNTY	TOTAL SHEETS	SHEET NO.
	*	1-HBR & 1-2HB-D	WINNEBAGO	216	71
		IL RTE 251 & FOREST HILLS RD		CONTRACT NO. 64B79	
		FED. ROAD DIST. NO. 7 ILLINOIS		FED. AID PROJECT	

* F.A.P. 303 & F.A.U. 5146

Revised 10/25/10 BHS