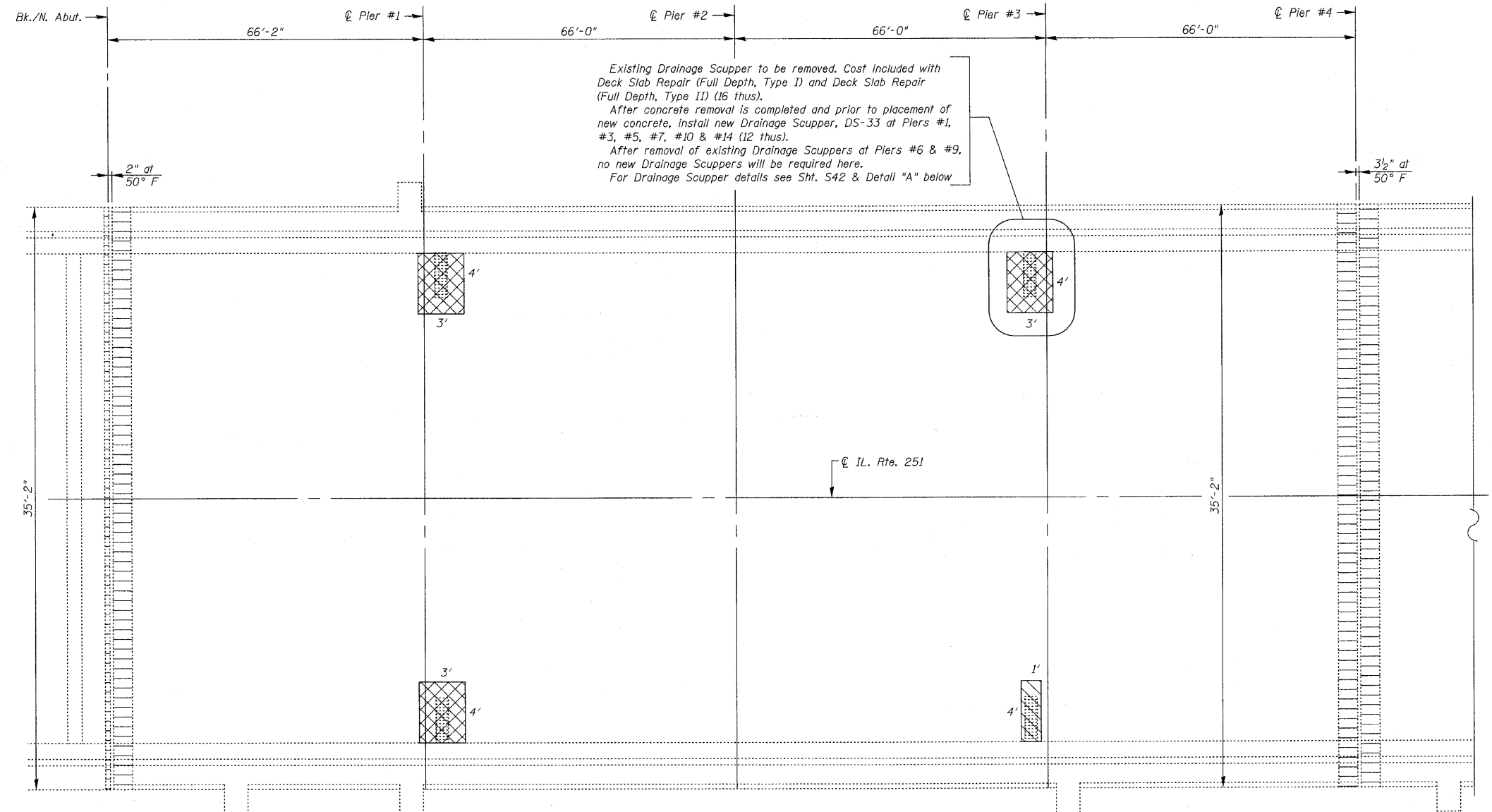
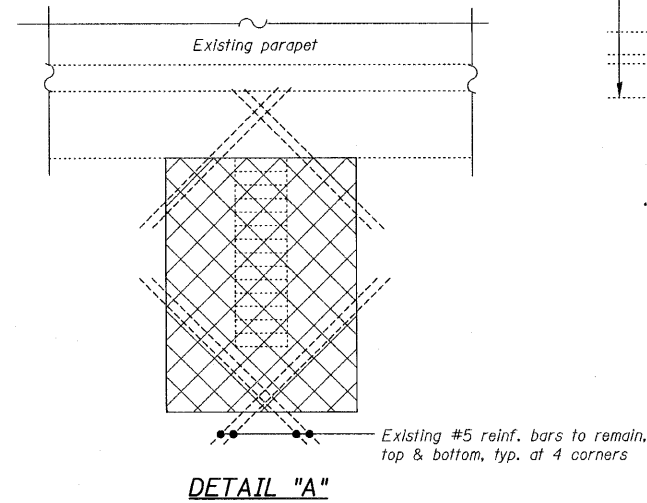


STATE OF ILLINOIS
DEPARTMENT OF TRANSPORTATION



Existing Drainage Scupper to be removed. Cost included with Deck Slab Repair (Full Depth, Type I) and Deck Slab Repair (Full Depth, Type II) (16 thus).
After concrete removal is completed and prior to placement of new concrete, install new Drainage Scupper, DS-33 at Piers #1, #3, #5, #7, #10 & #14 (12 thus).
After removal of existing Drainage Scuppers at Piers #6 & #9, no new Drainage Scuppers will be required here.
For Drainage Scupper details see Sht. S42 & Detail "A" below



DECK REPAIRS
(Spans 1 thru 4)

BILL OF MATERIAL

ITEM	UNIT	QUANTITY
Bridge Deck Grooving	Sq Yd	3,350
Protective Coat	Sq Yd	3,570
Bridge Deck Hydro-Scarification 1/2"	Sq Yd	3,570
Deck Slab Repair (Full Depth, Type I)	Sq Yd	5
Deck Slab Repair (Full Depth, Type II)	Sq Yd	7
Bridge Deck Microsilica Concrete Overlay 2 1/4"	Sq Yd	3,570

- LEGEND:**
- Deck Slab Repair (Full Depth, Type I)
 - Deck Slab Repair (Full Depth, Type II)
 - Expansion Joint Reconstruction

DECK REPAIRS-I
IL. RTE. 251 OVER IL. RTE. 38
C&NW R.R. AND B.N. R.R.
F.A.P. RTE. 740 (IL. RTE. 251)
SECTION (108HVB)M
OGLE COUNTY
STA. 856+44.00
STRUCTURE NO. 071-0066

NOTES:

For Expansion Joint Reconstruction Details, See Sht's. S8 thru S13.
For Approach Slab Repairs, see Sht's. S14 & S15.
Areas of Deck Repairs shown are estimated. The Engineer shall show actual locations of Deck Repairs on As-Built Plans.
During Full Depth Repair over Scuppers, the Contractor must not disturb or damage the existing beams beneath the drainage scuppers.

DESIGNED -	2010
CHECKED -	EXAMINED
DRAWN -	ENGINEER OF BRIDGE DESIGN
CHECKED -	PASSED
	ENGINEER OF BRIDGES AND STRUCTURES

CHRISTIAN-ROGE & ASSOCIATES, INC.
ENGINEERS-PLANNERS-SURVEYORS
211 WEST WACKER DRIVE
CHICAGO, ILLINOIS 60606
PHONE: (312)372-2023 FAX: (312)372-5274

SHEET NO. S4	F.A.P. RTE. 740	SECTION (108HVB)M	COUNTY OGLE	TOTAL SHEETS 55	SHEET NO. 11
S43 SHEETS	CONTRACT NO. 64G24		ILLINOIS FED. AID PROJECT		