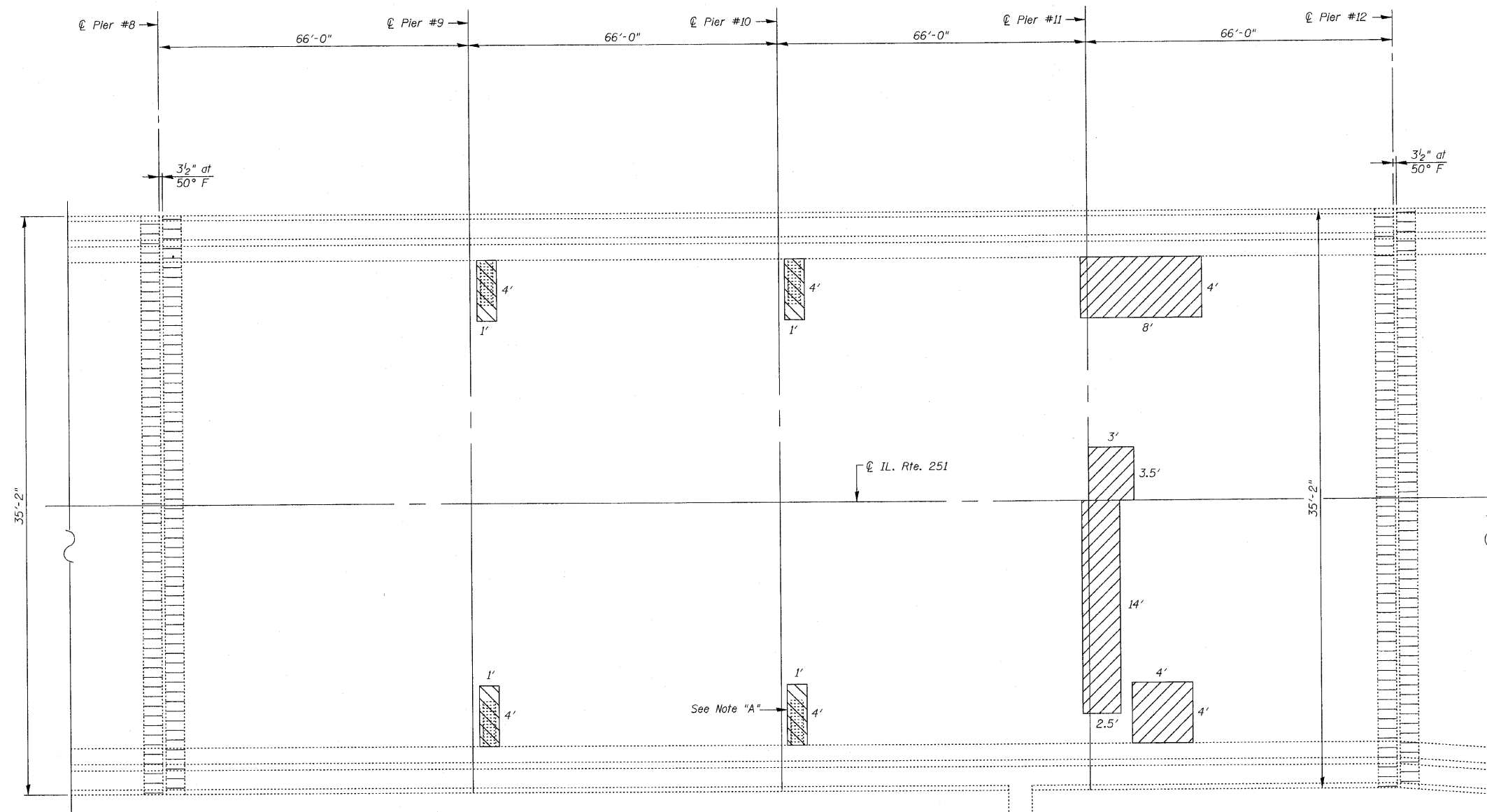
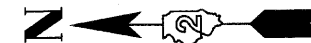


STATE OF ILLINOIS  
DEPARTMENT OF TRANSPORTATION



**DECK REPAIRS**  
(Spans 9 thru 12)

**NOTE "A"**

Four pipe hangers supporting the conduit connected to the bottom of the deck are within the repair area. These Pipe hangers shall be re-installed, either by reattachment prior to forming the concrete repair, or by relocation to a portion of the existing deck within two feet of the repair area. Cost included with Deck Slab Repair (Full Depth, Type I).

**NOTES:**

For Expansion Joint Reconstruction Details, See Sht's. S8 thru S13.  
For Approach Slab Repairs, see Sht's. S14 & S15.  
Areas of Deck Repairs shown are estimated. The Engineer shall show actual locations of Deck Repairs on As-Built Plans.  
During Full Depth Repair over Scuppers, the Contractor must not disturb or damage the existing beams beneath the drainage scuppers.

**LEGEND:**

- Deck Slab Repair (Full Depth, Type I)
- Deck Slab Repair (Full Depth, Type II)
- \* Deck Slab Repair (Partial)
- Expansion Joint Reconstruction

\* For Information only

**DECK REPAIRS-III**  
**IL. RTE. 251 OVER IL. RTE. 38**  
**C&NW R.R. AND B.N. R.R.**  
**F.A.P. RTE. 740 (IL. RTE. 251)**  
**SECTION (108HVB)M**  
**OGLE COUNTY**  
**STA. 856+44.00**  
**STRUCTURE NO. 071-0066**

DESIGNED -	
CHECKED -	
DRAWN -	
CHECKED -	

EXAMINED	2010
PASSED	ENGINEER OF BRIDGE DESIGN
	ENGINEER OF BRIDGES AND STRUCTURES

**CR & A**  
CHRISTIAN-ROGE & ASSOCIATES, INC.  
ENGINEERS-PLANNERS-SURVEYORS  
211 WEST WACKER DRIVE  
CHICAGO, ILLINOIS 60606  
PHONE: (312)372-2023 FAX: (312)372-5274

SHEET NO. S6	F.A.P. RTE.	SECTION	COUNTY	TOTAL SHEETS	SHEET NO.
	740	(108HVB)M	OGLE	55	13
S43 SHEETS	CONTRACT NO. 64G24			ILLINOIS FED. AID PROJECT	