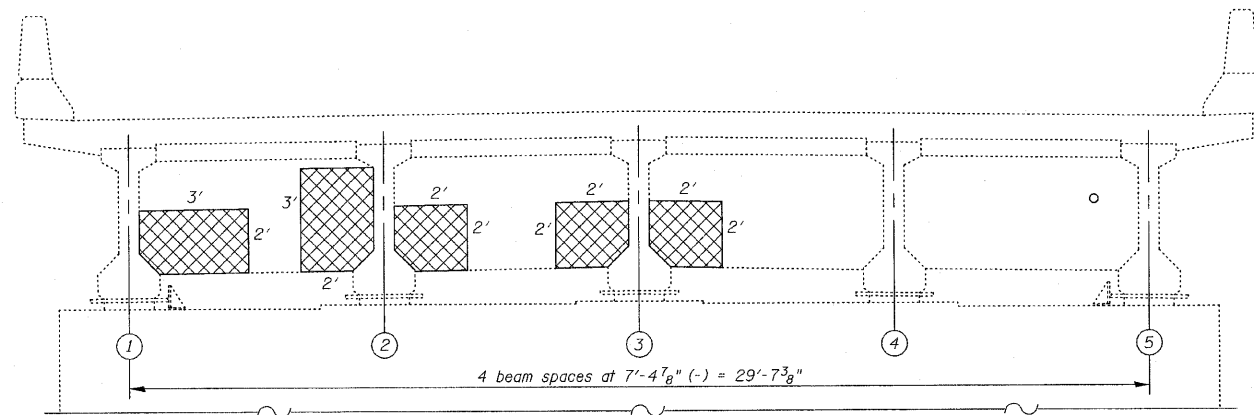
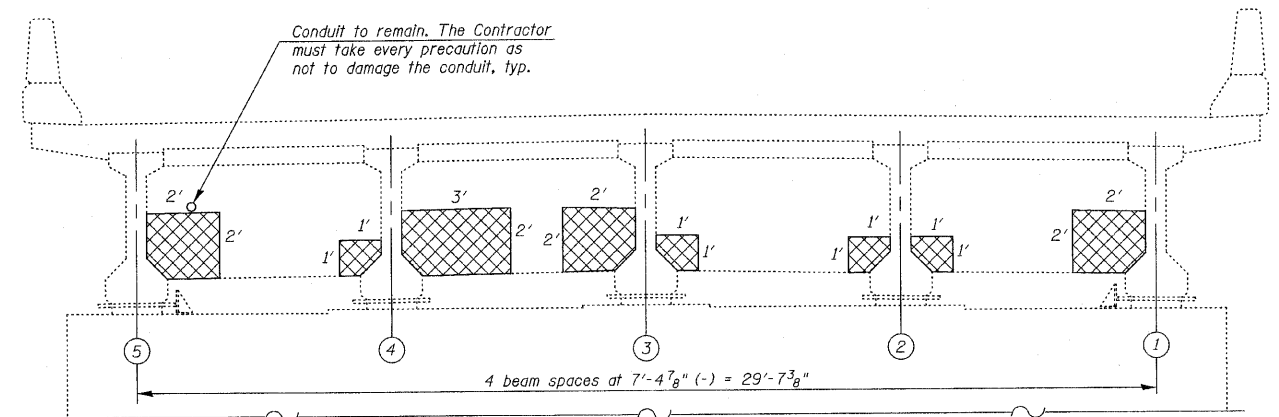


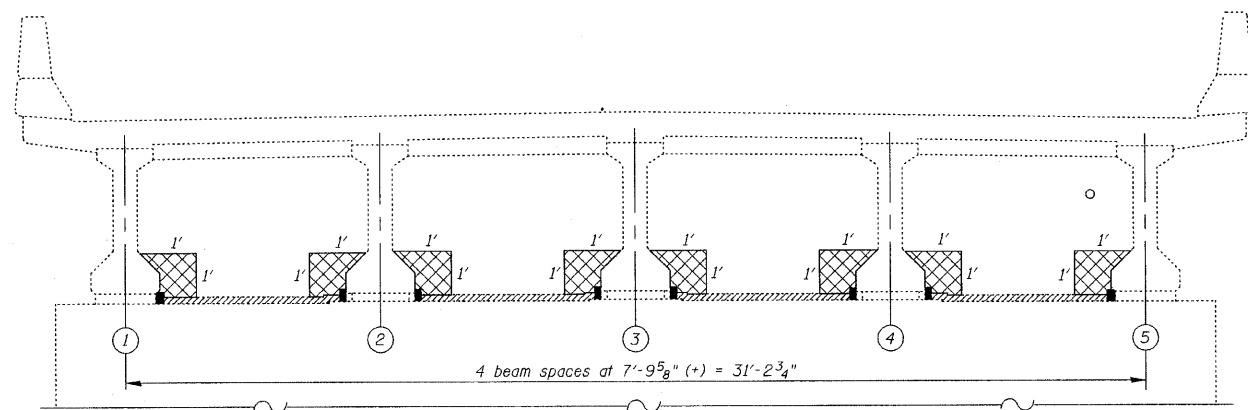
STATE OF ILLINOIS  
DEPARTMENT OF TRANSPORTATION



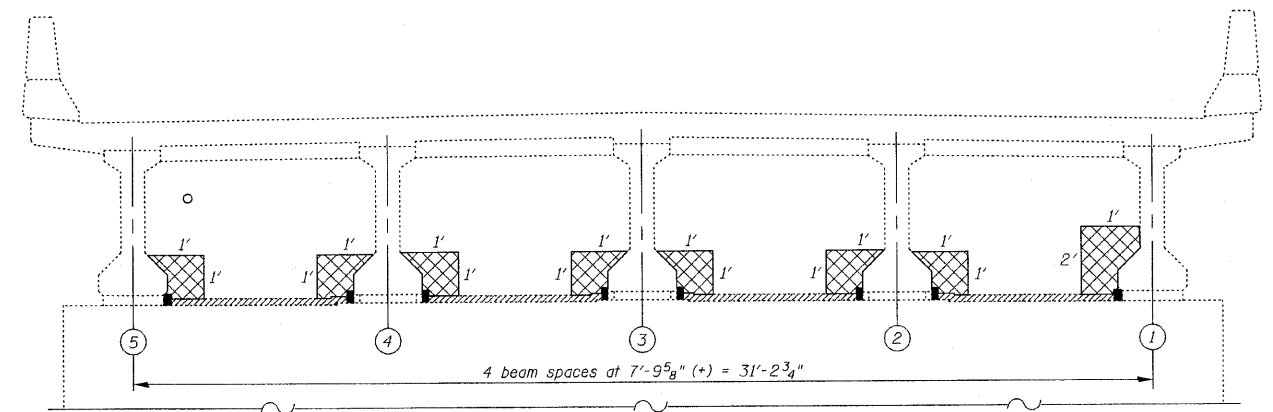
**DIAPHRAGM AT EXPANSION PIER #13**  
(Looking South)



**DIAPHRAGM AT EXPANSION PIER #13**  
(Looking North)



**DIAPHRAGM AT FIXED PIER #14**  
(Looking South)



**DIAPHRAGM AT FIXED PIER #14**  
(Looking North)

**LEGEND:**

Structural Repair of Concrete  
(Depth Equal To or Less Than 5 Inches)

**BILL OF MATERIAL**

ITEM	UNIT	QUANTITY
Structural Repair of Concrete (Depth Equal To or Less Than 5 Inches)	Sq Ft	63

**DIAPHRAGM REPAIRS-IV**  
IL. RTE. 251 OVER IL. RTE. 38  
C&NW R.R. AND B.N. R.R.  
F.A.P. RTE. 740 (IL. RTE. 251)  
SECTION (108HVB)M  
OGLE COUNTY  
STA. 856+44.00  
STRUCTURE NO. 071-0066

DESIGNED -	
CHECKED -	
DRAWN -	
CHECKED -	

2010  
EXAMINED  
ENGINEER OF BRIDGE DESIGN  
PASSED  
ENGINEER OF BRIDGES AND STRUCTURES

CHRISTIAN-ROGE & ASSOCIATES, INC.  
ENGINEERS-PLANNERS-SURVEYORS  
211 WEST WACKER DRIVE  
CHICAGO, ILLINOIS 60606  
PHONE: (312)372-2023 FAX: (312)372-5274

SHEET NO. S26 S43 SHEETS	F.A.P. RTE. 740	SECTION (108HVB)M	COUNTY OGLE	TOTAL SHEETS 55	SHEET NO. 33
	CONTRACT NO. 64G24			ILLINOIS FED. AID PROJECT	