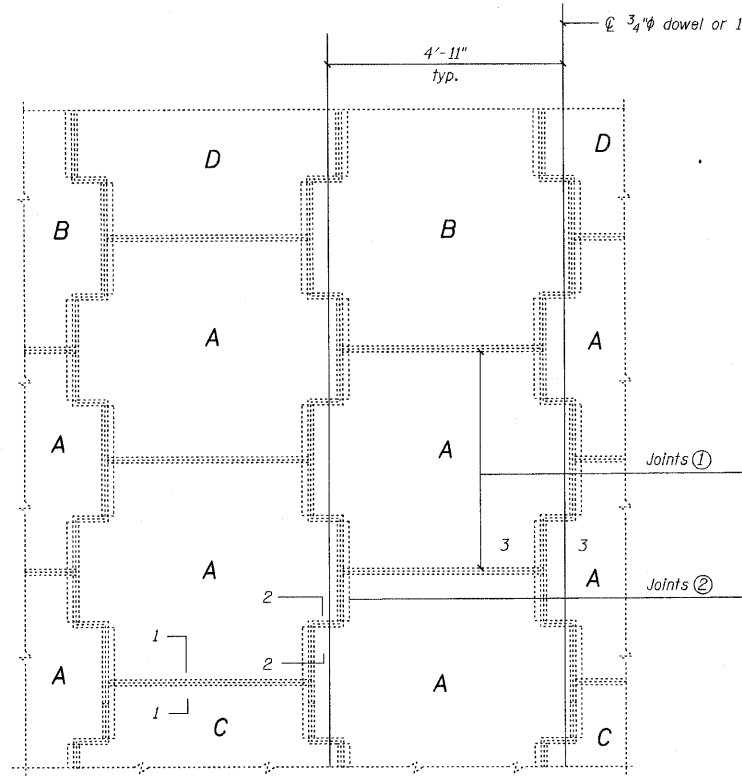
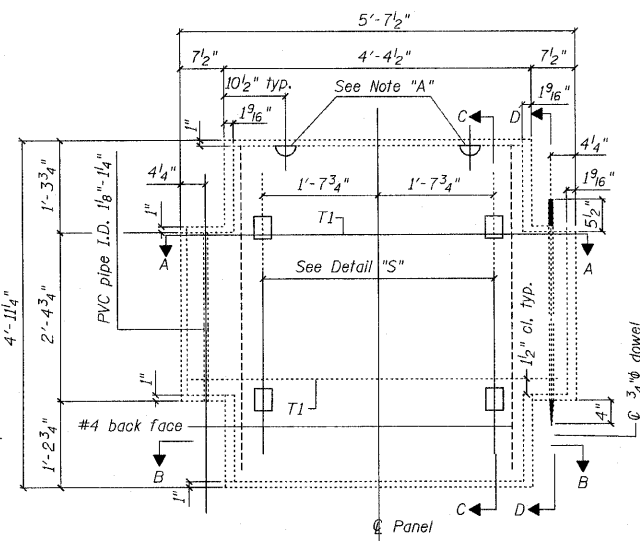


STATE OF ILLINOIS
DEPARTMENT OF TRANSPORTATION

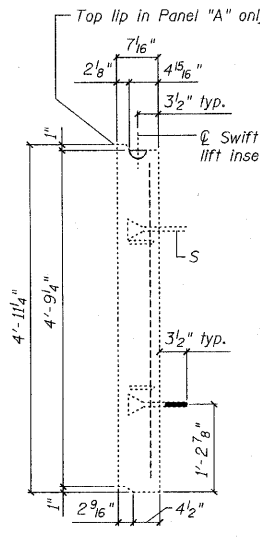
NOTE "A"
One ton swift lift inserts $\frac{3}{8}$ "x $\frac{3}{8}$ "



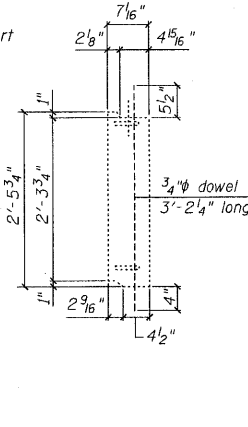
TYPICAL PANEL LAYOUT



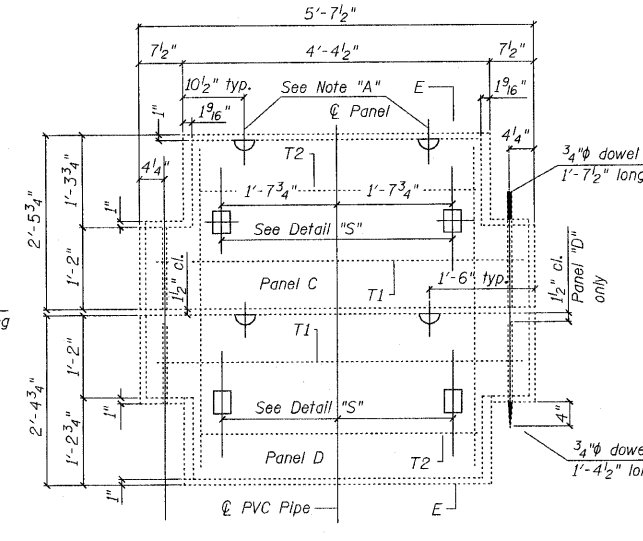
PANEL TYPE A & B
Front view



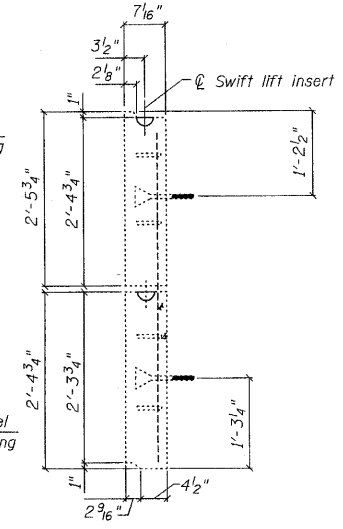
SECTION C-C



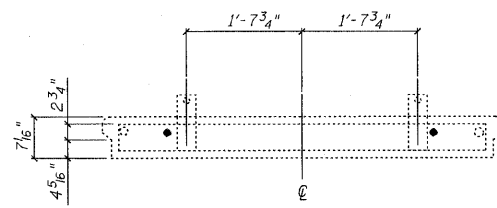
SECTION D-D



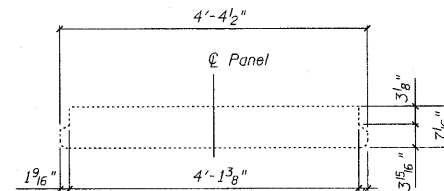
HALF PANELS C & D
Front view



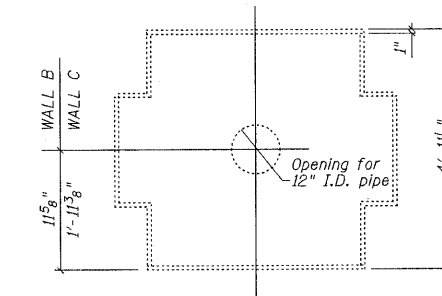
SECTION E-E



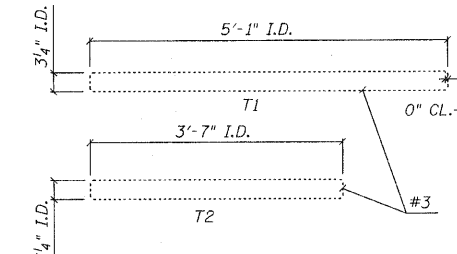
SECTION A-A



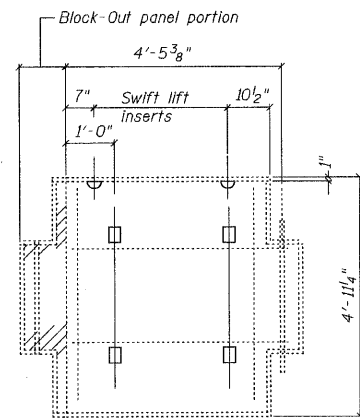
SECTION B-B



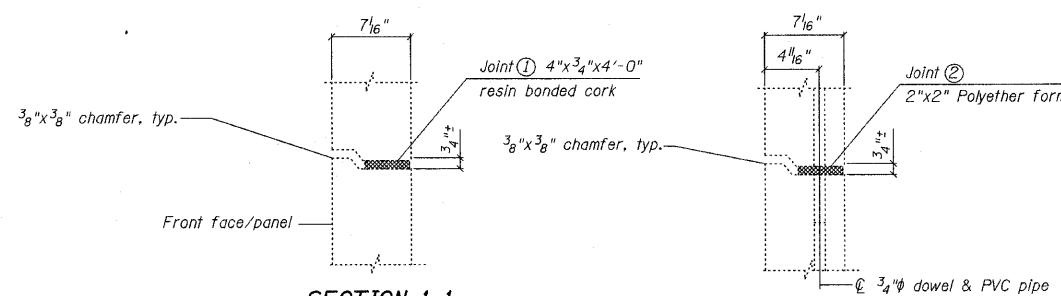
PANEL TYPE A-1
Front view



STIRRUP DETAILS

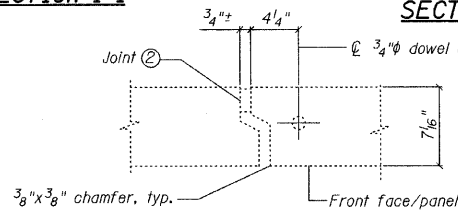


PANEL TYPE "AL"
Front view



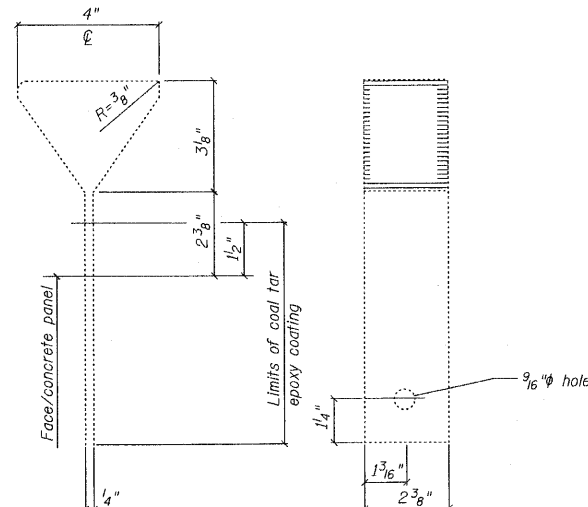
SECTION 1-1

SECTION 2-2



SECTION 3-3

NOTE:
Panel Type "A-1" similar to Type "A" except for 12" hole for drain pipe

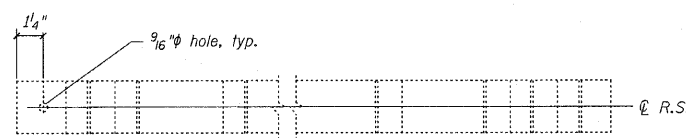


TIE STRIP DETAIL "S"
With coal tar epoxy coating (see Special Provisions)

FOR INFORMATION ONLY

MSE RETAINING WALL
TYPICAL PANEL DETAILS
IL. RTE. 251 OVER IL. RTE. 38
C&NW R.R. AND B.N. R.R.
F.A.P. RTE. 740 (IL. RTE. 251)
SECTION (108HVB)M
OGLE COUNTY
STA. 856+44.00
STRUCTURE NO. 071-0066

| | |
|------------|------------------------------------|
| DESIGNED - | 2010 |
| CHECKED - | EXAMINED |
| DRAWN - | PASSED |
| CHECKED - | ENGINEER OF BRIDGES AND STRUCTURES |



DETAIL OF REINFORCING STRIP

CHRISTIAN-ROGE & ASSOCIATES, INC.
ENGINEERS-PLANNERS-SURVEYORS
211 WEST WACKER DRIVE
CHICAGO, ILLINOIS 60606
PHONE: (312)372-2023 FAX: (312)372-5274

| | | | | | |
|---------------|--------------------|-------------------|---------------------------|-----------------|--------------|
| SHEET NO. S40 | F.A.P. RTE. 740 | SECTION (108HVB)M | COUNTY OGLE | TOTAL SHEETS 55 | SHEET NO. 47 |
| S43 SHEETS | CONTRACT NO. 64G24 | | ILLINOIS FED. AID PROJECT | | |