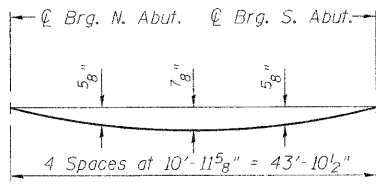


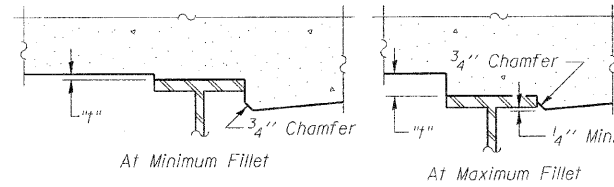
STATE OF ILLINOIS  
DEPARTMENT OF TRANSPORTATION



**DEAD LOAD DEFLECTION DIAGRAM**

(Includes weight of concrete only.)

Note:  
The above deflections are not to be used in the field if the engineer is working from the theoretical grade elevations adjusted for dead load deflections as shown below, and on sheet 4 of 20.



To determine "t": After all structural steel has been erected, elevations of the top flanges of the beams shall be taken at intervals shown below. These elevations subtracted from the "Theoretical Grade Elevations Adjusted for Dead Load Deflection" shown below, minus slab thickness, equals the fillet heights "t" above top flange of beams.

**FILLET HEIGHTS**

**LEFT EDGE OF DECK**

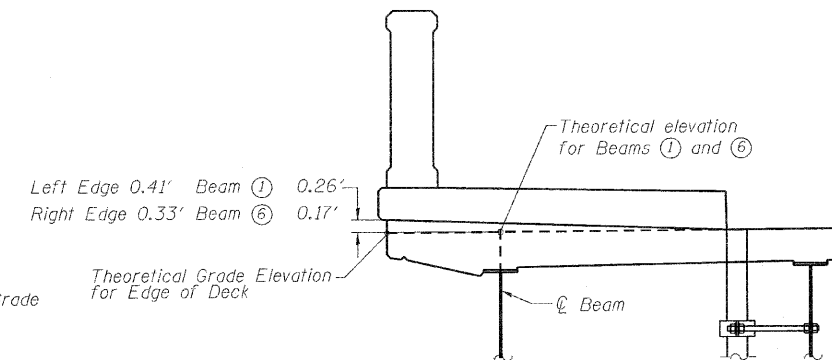
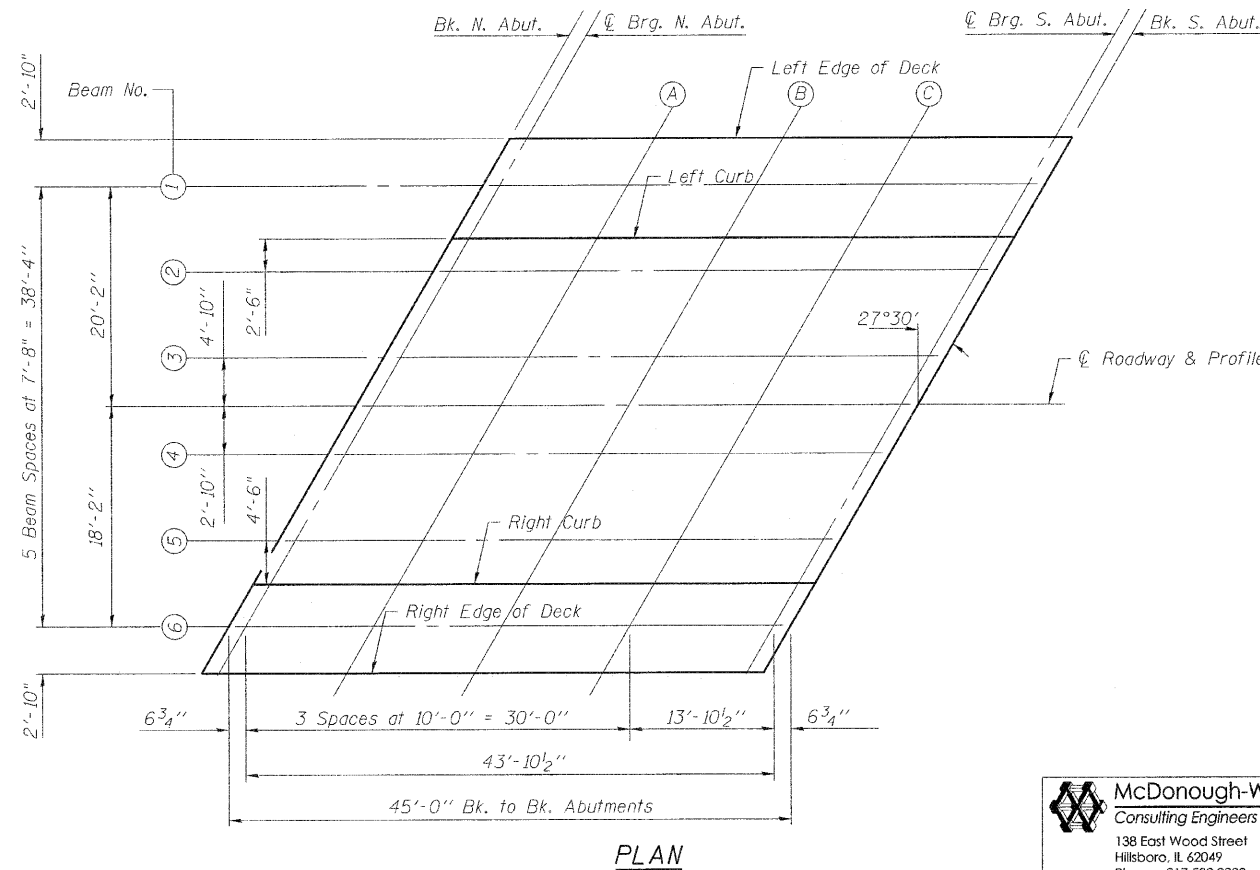
Location	Station	Offset	Theoretical Grade Elevations	Theoretical Grade Elevations Adjusted For Dead Load Deflection
Bk. N. Abut.	179 + 23.13	-23.00	478.80	478.80
☉ Brg. N. Abut.	179 + 23.70	-23.00	478.80	478.80
A	179 + 33.70	-23.00	478.83	478.88
B	179 + 43.70	-23.00	478.86	478.94
C	179 + 53.70	-23.00	478.89	478.95
☉ Brg. S. Abut.	179 + 67.57	-23.00	478.93	478.93
Bk. S. Abut.	179 + 68.13	-23.00	478.94	478.94

**BEAM 1**

Location	Station	Offset	Theoretical Grade Elevations	Theoretical Grade Elevations Adjusted For Dead Load Deflection
Bk. N. Abut.	179 + 21.66	-20.17	478.86	478.86
☉ Brg. N. Abut.	179 + 22.23	-20.17	478.86	478.86
A	179 + 32.23	-20.17	478.89	478.94
B	179 + 42.23	-20.17	478.92	478.99
C	179 + 52.23	-20.17	478.95	479.01
☉ Brg. S. Abut.	179 + 66.10	-20.17	478.99	478.99
Bk. S. Abut.	179 + 66.66	-20.17	478.99	478.99

**LEFT CURB**

Location	Station	Offset	Theoretical Grade Elevations	Theoretical Grade Elevations Adjusted For Dead Load Deflection
Bk. N. Abut.	179 + 18.97	-15.00	478.95	478.95
☉ Brg. N. Abut.	179 + 19.54	-15.00	478.96	478.96
A	179 + 29.54	-15.00	478.99	479.04
B	179 + 39.54	-15.00	479.02	479.09
C	179 + 49.54	-15.00	479.05	479.11
☉ Brg. S. Abut.	179 + 63.41	-15.00	479.09	479.09
Bk. S. Abut.	179 + 63.97	-15.00	479.09	479.09



Note:  
See sheet 4 of 20 for additional elevations.

**TOP OF SLAB ELEVATIONS  
STRUCTURE NO. 050-0250**

DESIGNED	CMF
CHECKED	TMM
DRAWN	RNH
CHECKED	TMM

**McDonough-Whitlow, P.C.**  
Consulting Engineers & Land Surveyors  
138 East Wood Street  
Hillsboro, IL 62049  
Phone: 217.532.9233  
Fax: 217.532.6300  
PROFESSIONAL DESIGN No. 184-002754

SHEET NO. 3 20 SHEETS	F.A.S. RTE.	SECTION	COUNTY	TOTAL SHEETS	SHEET NO.
	1279	6R, B	LASALLE	190	105
FED. ROAD DIST. NO. _			ILLINOIS FED. AID PROJECT	CONTRACT NO. 66547	