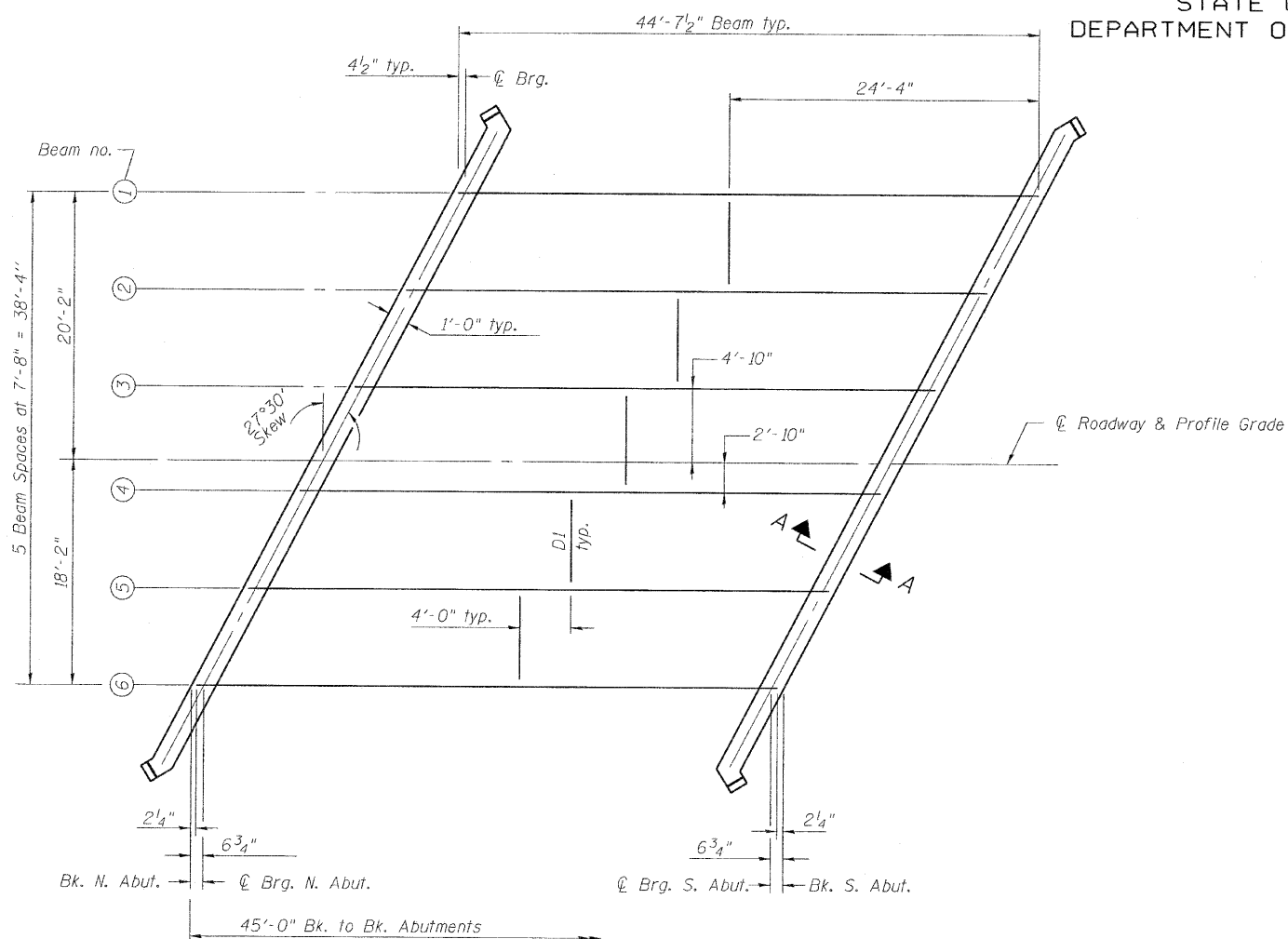
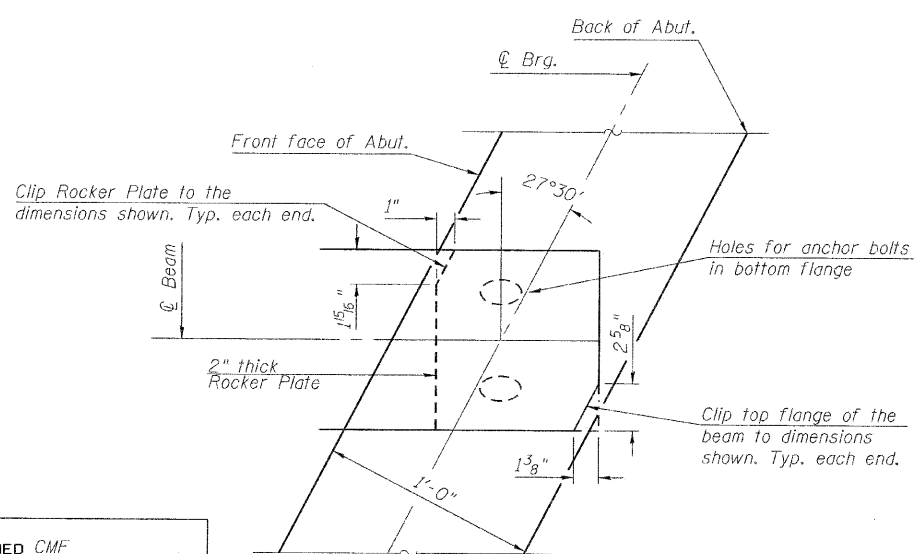


STATE OF ILLINOIS
DEPARTMENT OF TRANSPORTATION

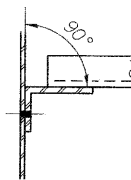


FRAMING PLAN

All beams are W27x84 (NTR) M270 Gr. 50.



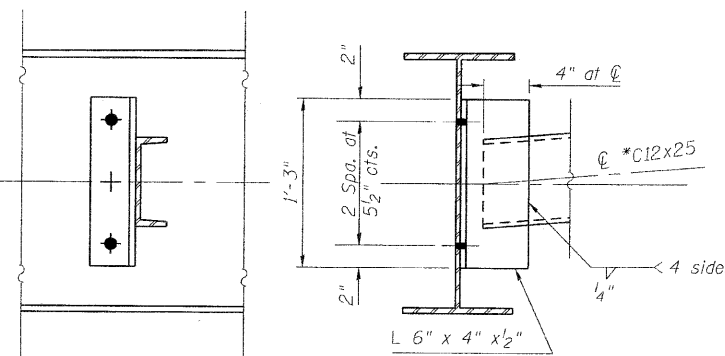
BEAM BEARING DETAIL



PLAN

See Framing Plan for diaphragm offset.

C Beam web and
C *C12x25 at
end of channel



ELEVATION

SECTION

INTERIOR DIAPHRAGM D1

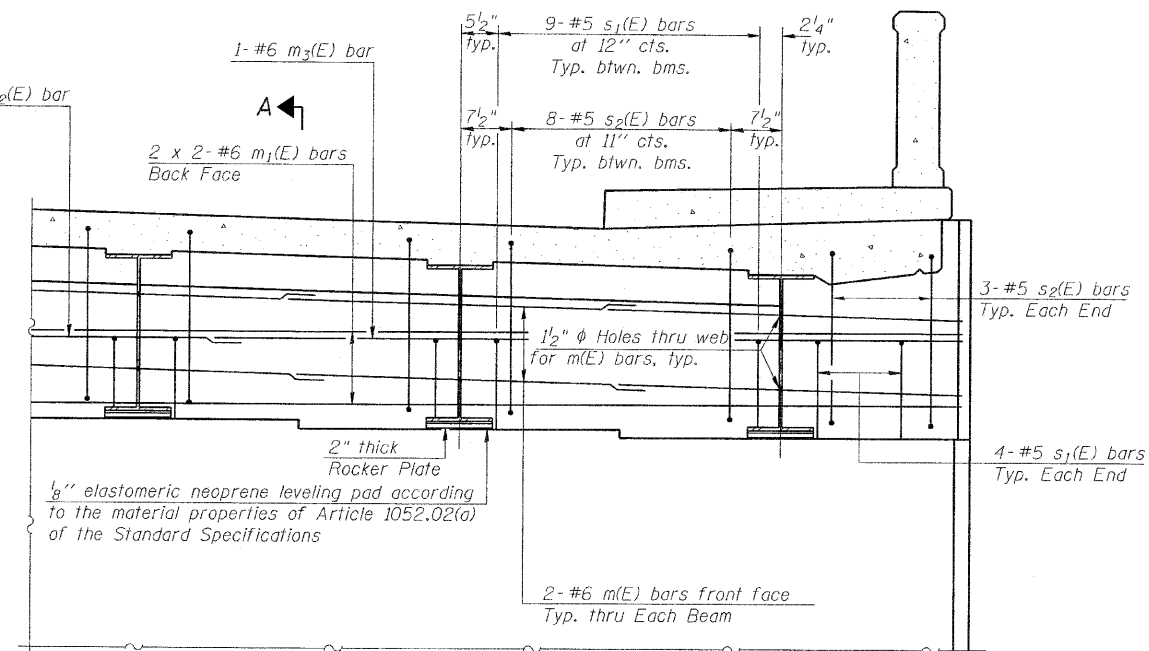
No. Req'd = 5

* C12x30 may be used as an alternate size to facilitate material acquisition. Calculated weight of structural steel is based on the lighter section.

If alternate is utilized, it shall be provided at no extra cost to the Department.

MIN. BAR LAP

#6 bar = 2'-9"



DIAPHRAGM ELEVATION AT ABUTMENT

Notes:

- See sheet 9 of 20 for Section A-A.
- See sheet 13 of 20 for bearing details.
- Structural steel for diaphragms and connecting plates shall be AASHTO M270 Grade 36.
- Reinforcement bars in diaphragm are billed with superstructure on sheet 9 of 20.
- Concrete in diaphragm is included with Concrete Superstructure on sheet 9 of 20.
- For details of bar s₂(E) see sheet 9 of 20, and for details of bar s(E) and s₁(E) and Bill of Material see sheet 14 and 15 of 20.
- The s₂(E) bars shall be placed parallel to the beams. Spacing for these bars shall be at right angles to the beams.
- All cross frames or diaphragms shall be installed as steel is erected and secured with erection pins and bolts except as otherwise noted. Individual cross frames or diaphragms at supports may be temporarily disconnected to install bearing anchor rods.

**FRAMING PLAN
STRUCTURE NO. 050-0250**

DESIGNED	CMF
CHECKED	TMM
DRAWN	RNH
CHECKED	TMM

McDonough-Whitlow, P.C.
Consulting Engineers & Land Surveyors
138 East Wood Street
Hillsboro, IL 62049
Phone: 217.532.9233
Fax: 217.532.6300
PROFESSIONAL DESIGN NO. 184-002754

SHEET NO. 12
20 SHEETS

F.A.S. RTE.	SECTION	COUNTY	TOTAL SHEETS	SHEET NO.
1279	6R, B	LASALLE	190	114
CONTRACT NO.			66547	
FED. ROAD DIST. NO. ILLINOIS FED. AID PROJECT				